

1.  $\odot$  REPRESENTS A CRITICAL DIMENSION.
2. MINIMUM PUSH OUT FORCE: 1N [.25 LB]
3. MAXIMUM HEIGHT VARIATION BETWEEN ANY TWO POSTS: 0.13[.005].
4. MAXIMUM ALLOWABLE BOW: 0.05[.002] MM/MM AFTER ASSEMBLY.
5. PARTS TO BE PACKAGED IN TAPE AND REEL.
6. OR-104-01 TO BE COMPRESSED 20-40% TO MEET CEI/IEC 60529 CODE IP67.
7. FOR QUANTITIES UP TO 49 PIECES, NO LEADER, TRAILER, OR REEL WILL BE SUPPLIED.  
FOR QUANTITIES 50-124, NO LEADER OR TRAILER WILL BE SUPPLIED.
8. EPOXY-01 MUST BE FLUSH OR BELOW FORMED BY THIS SURFACE.
9. INSPECT 100% USING GO/NOGO GAUGE, REFER TO PTL.

DESIGNED & DIMENSIONED  
IN MILLIMETERS[INCHES]

MUSBS-05-S-B-TH-XX-TR

No OF POSITIONS  
-05

PACKAGING  
-TR: TAPE & REEL

OPTION

\*-PF: PANEL FLANGE (LEAVE  
BLANK FOR NO MOUNTING  
HARDWARE)

TERMINATION  
-TH: THROUGH HOLE

PLATING SPECIFICATION  
-S: SELECTIVE, .000030 GOLD  
ON POST, TIN ON TAIL, WITH  
.000050 MIN NICKEL  
UNDERPLATING OVERALL.

TYPE  
-B

\* NOT TOOLED

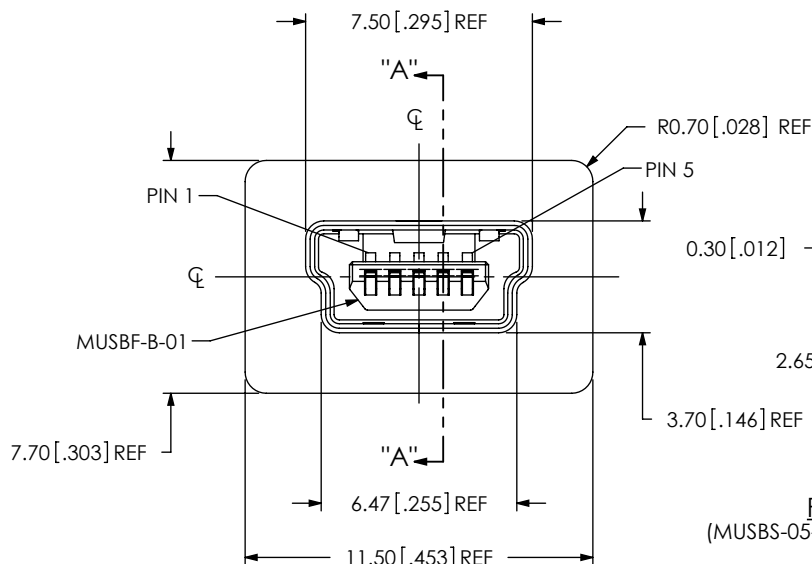
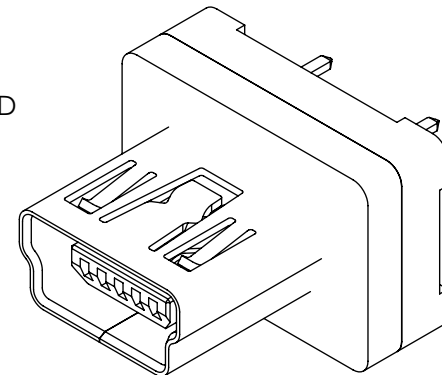
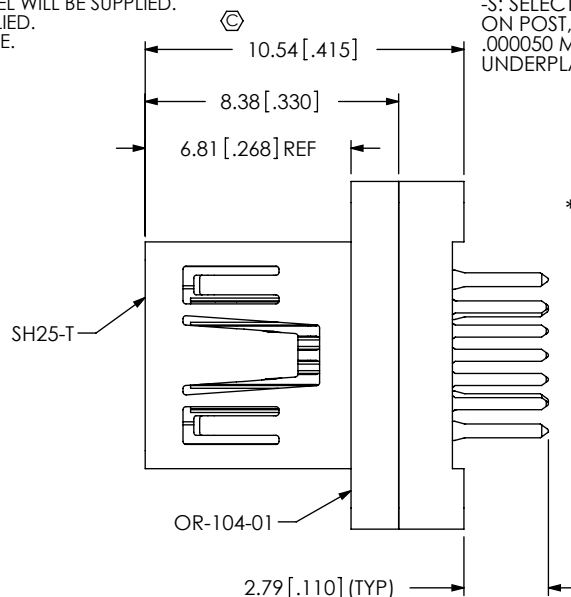
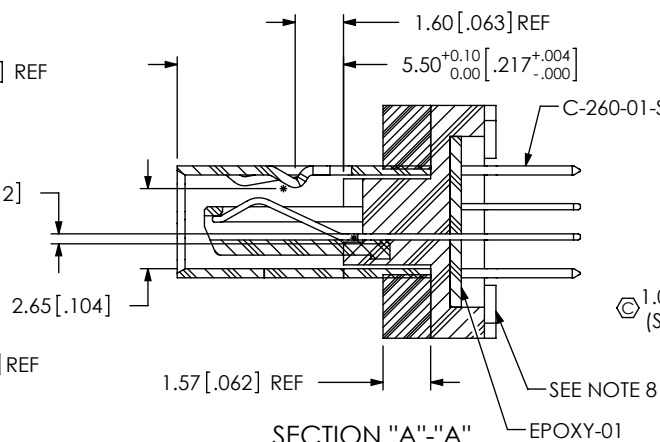
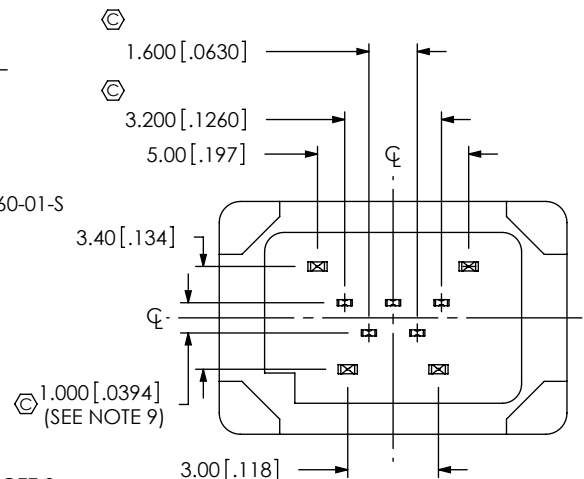


FIG 1  
(MUSBS-05-S-B-TH SHOWN)



SECTION "A"-"A"



UNLESS OTHERWISE SPECIFIED,  
DIMENSIONS ARE IN MILLIMETERS.  
TOLERANCES ARE:

DECIMALS ANGLES  
X.X:  $\pm 0.3$  [.01] 2°  
X.XX:  $\pm 0.13$  [.005]  
X.XXX:  $\pm 0.051$  [.0020]

PROPRIETARY NOTE  
THIS DOCUMENT CONTAINS CONFIDENTIAL AND  
PROPRIETARY INFORMATION AND ALL DESIGN,  
MANUFACTURING, REPRODUCTION, USE, PATENT RIGHTS  
AND SALES RIGHTS ARE EXPRESSLY RESERVED BY SAMTEC,  
INC. THIS DOCUMENT SHALL NOT BE DISCLOSED, IN WHOLE  
OR PART, TO ANY UNAUTHORIZED PERSON OR ENTITY NOR  
REPRODUCED, TRANSFERRED OR INCORPORATED IN ANY  
OTHER PROJECT IN ANY MANNER WITHOUT THE EXPRESS  
WRITTEN CONSENT OF SAMTEC, INC.

MATERIAL: DO NOT SCALE DRAWING  
INSULATOR: LCP UL 94V-0 COLOR: BLACK  
CONTACT: PHOS BRONZE  
OVERMOLD: E130I, COLOR: BLACK  
MAX REGROUND: 50%  
EPOXY-01 VOLUME: 0.02mL [.00 000 528 gal]  
MUSBS OVERMOLD SHOT WEIGHT: 4.90g [0.0108 lb]  
F:\DWG\MISC\MKTG\MUSBS-05-S-B-TH-XX-TR-MKT.SLDDRW

SHEET SCALE: 4:1

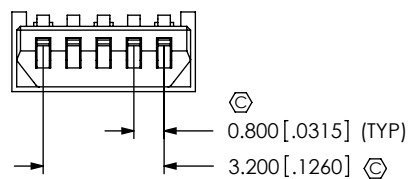
DESCRIPTION:  
MUSB TYPE B, VERTICAL SEALED

DWG. NO.  
MUSBS-05-S-B-TH-XX-TR

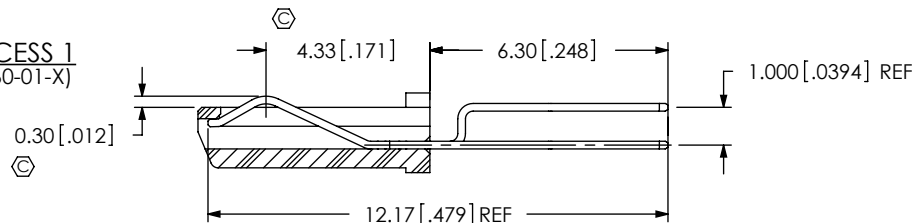
BY: T NEWTON 11/19/2008 SHEET 1 OF 4

**samtec**

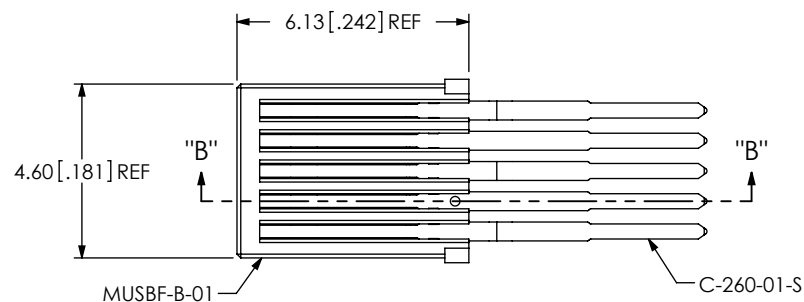
520 PARK EAST BLVD, NEW ALBANY, IN 47150  
PHONE: 812-944-6733 FAX: 812-948-5047  
e-Mail: info@SAMTEC.com code 53322



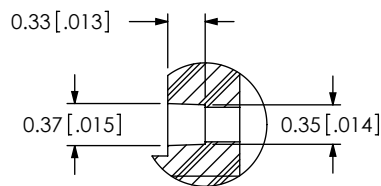
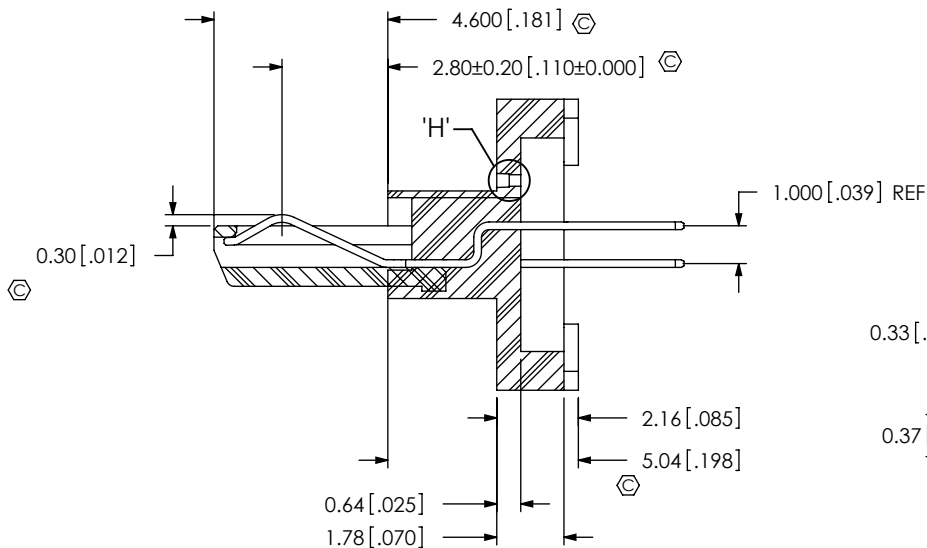
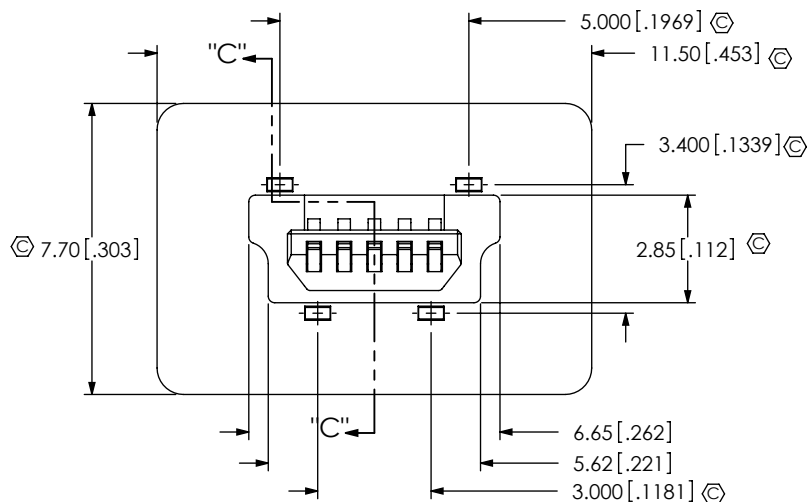
IN-PROCESS 1  
(FILL C-260-01-X)



SECTION "B"-"B"

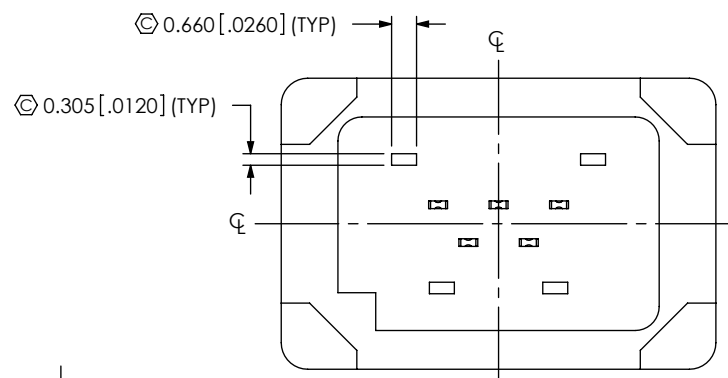


IN-PROCESS 2  
(ADD OVERMOLD)



DETAIL 'H'  
SCALE 15:1

SECTION "C"-"C"



PROPRIETARY NOTE

THIS DOCUMENT CONTAINS CONFIDENTIAL AND PROPRIETARY INFORMATION AND ALL DESIGN, MANUFACTURING, REPRODUCTION, USE, PATENT RIGHTS AND SALES RIGHTS ARE EXPRESSLY RESERVED BY SAMTEC, INC. THIS DOCUMENT SHALL NOT BE DISCLOSED, IN WHOLE OR PART, TO ANY UNAUTHORIZED PERSON OR ENTITY NOR REPRODUCED, TRANSFERRED OR INCORPORATED IN ANY OTHER PROJECT IN ANY MANNER WITHOUT THE EXPRESS WRITTEN CONSENT OF SAMTEC, INC.

DO NOT SCALE DRAWING

SHEET SCALE: 5:1

**samtec**

520 PARK EAST BLVD, NEW ALBANY, IN 47150  
PHONE: 812-944-6733 FAX: 812-948-5047  
e-Mail info@SAMTEC.com code 55322

DESCRIPTION:

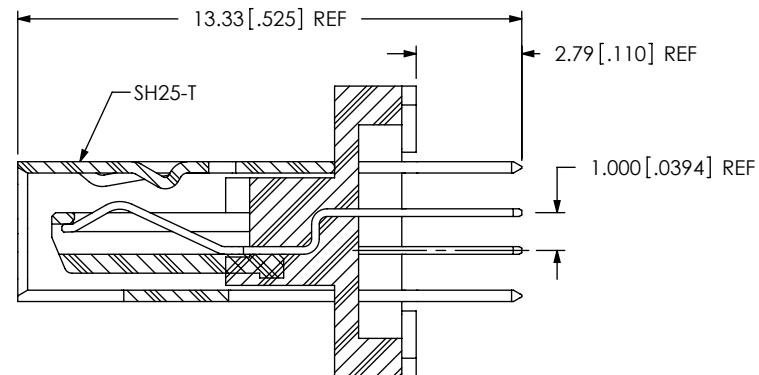
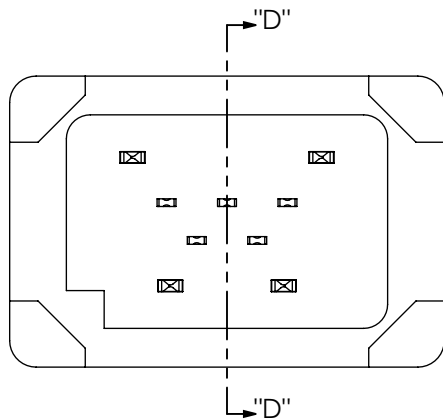
MUSB TYPE B, VERTICAL SEALED

DWG. NO.

MUSBS-05-S-B-TH-XX-TR

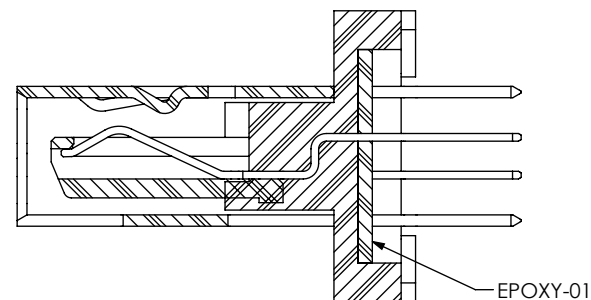
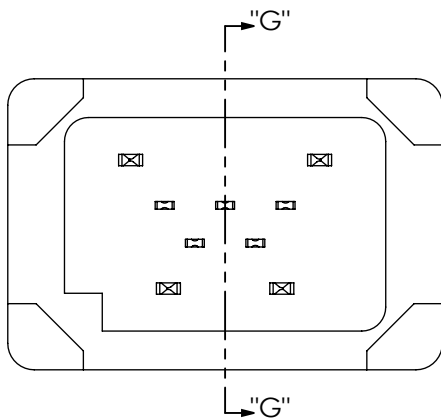
BY: T NEWTON 11/19/2008 SHEET 2 OF 4

IN-PROCESS 3  
(ADD SH25-T)



SECTION "D"-"D"

IN-PROCESS 4  
(ADD EPOXY-01)



SECTION "G"-"G"

**PROPRIETARY NOTE**  
THIS DOCUMENT CONTAINS CONFIDENTIAL AND PROPRIETARY INFORMATION AND ALL DESIGN, MANUFACTURING, REPRODUCTION, USE, PATENT RIGHTS AND SALES RIGHTS ARE EXPRESSLY RESERVED BY SAMTEC, INC. THIS DOCUMENT SHALL NOT BE DISCLOSED, IN WHOLE OR PART, TO ANY UNAUTHORIZED PERSON OR ENTITY NOR REPRODUCED, TRANSFERRED OR INCORPORATED IN ANY OTHER PROJECT IN ANY MANNER WITHOUT THE EXPRESS WRITTEN CONSENT OF SAMTEC, INC.

DO NOT SCALE DRAWING

SHEET SCALE: 5:1

**samtec**

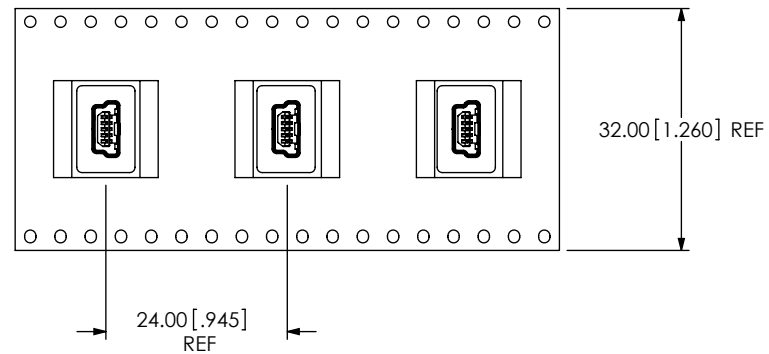
520 PARK EAST BLVD, NEW ALBANY, IN 47150  
PHONE: 812-944-6733 FAX: 812-948-5047  
e-Mail: info@SAMTEC.com code 55322

DESCRIPTION:  
MUSB TYPE B, VERTICAL SEALED

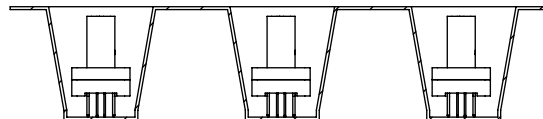
DWG. NO.  
**MUSBS-05-S-B-TH-XX-TR**

BY: T NEWTON 11/19/2008 SHEET 3 OF 4

PACKAGING VIEW



USER DIRECTION OF UN-REELING →  
POCKET NOT DETAILED



**PROPRIETARY NOTE**  
THIS DOCUMENT CONTAINS CONFIDENTIAL AND PROPRIETARY INFORMATION AND ALL DESIGN, MANUFACTURING, REPRODUCTION, USE, PATENT RIGHTS AND SALES RIGHTS ARE EXPRESSLY RESERVED BY SAMTEC, INC. THIS DOCUMENT SHALL NOT BE DISCLOSED, IN WHOLE OR PART, TO ANY UNAUTHORIZED PERSON OR ENTITY NOR REPRODUCED, TRANSFERRED OR INCORPORATED IN ANY OTHER PROJECT IN ANY MANNER WITHOUT THE EXPRESS WRITTEN CONSENT OF SAMTEC, INC.

DO NOT SCALE DRAWING

SHEET SCALE: 1:1

**samtec**

520 PARK EAST BLVD, NEW ALBANY, IN 47150  
PHONE: 812-944-6733 FAX: 812-948-5047  
e-Mail info@SAMTEC.com code 55322

DESCRIPTION:  
MUSB TYPE B, VERTICAL SEALED

DWG. NO.  
**MUSBS-05-S-B-TH-XX-TR**

BY: T NEWTON 11/19/2008 SHEET 4 OF 4