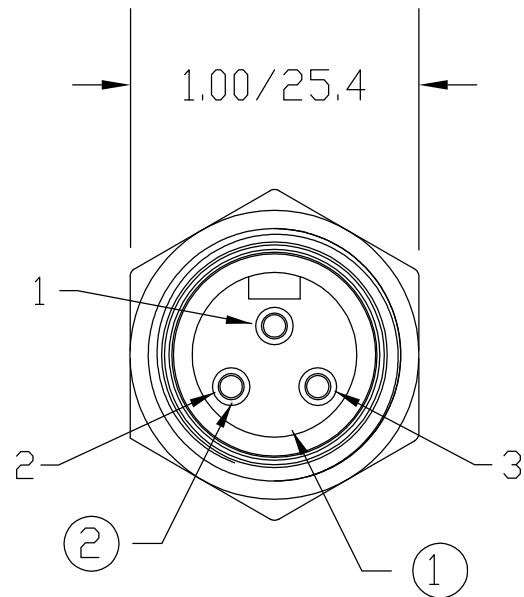
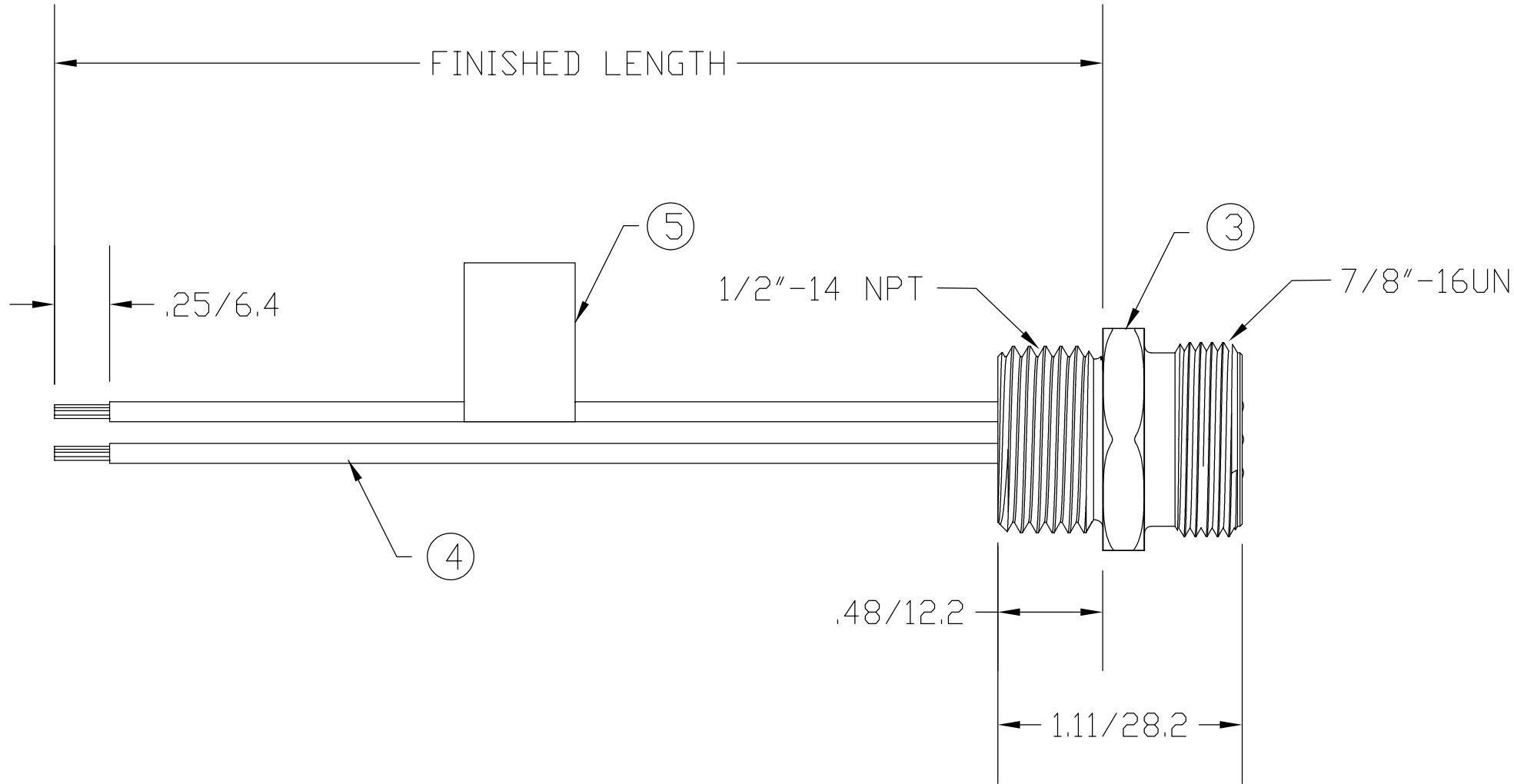
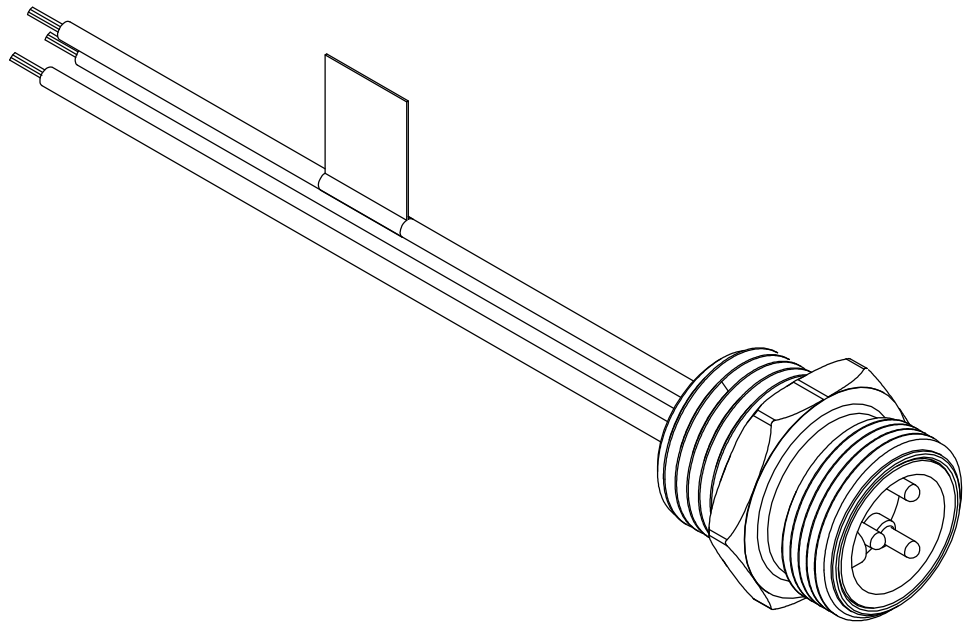


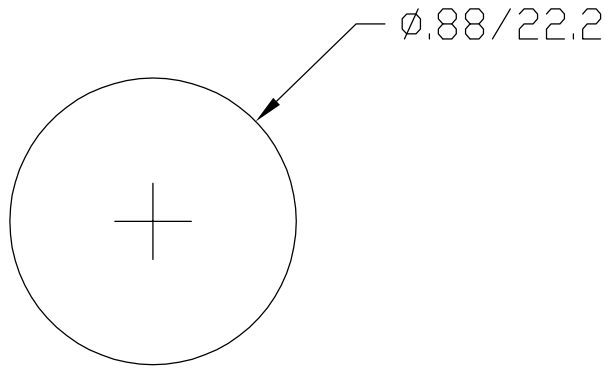
MATERIAL NUMBER	OLD PART NUMBER	FINISHED LENGTH
130013-0201	1R3006A20A060	6.00" +.75" -0 [1.2M +19.1 -0]
130013-0202	1R3006A20A120	12.00" +1.75" -0 [1.3M +44.5 -0]
130013-0211	1R3006A20F030	3.00' +2.19" -0 [1.9M +55.6 -0]
130013-0215	1R3006A20F060	6.00' +3.50" -0 [1.8M +88.9 -0]



MALE FACE VIEW

1	GREEN-YELLOW
2	BLACK
3	WHITE

WIRING DIAGRAM



KNOCKOUT HOLE

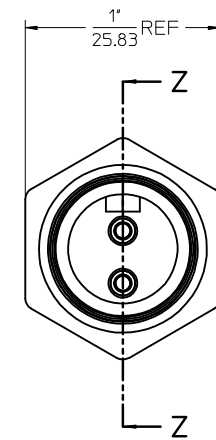
VOLTAGE RATING	600 VAC/VDC
AMPERAGE RATING	13 AMPS
PROTECTION	IP67
OPERATING TEMPERATURE	-20°C TO 105°C
UL CERTIFICATIONS	UL LISTED, FILE NO. E258922
CSA CERTIFICATIONS	CSA CERTIFIED, FILE NO. LR6837

ITEM	COMPONENT	MATERIAL	FINISH
1	INSERT	PVC	YELLOW
2	CONTACT PIN	COPPER ALLOY	GOLD OVER NICKEL
3	RECEPTACLE SHELL	ZINC DIE CAST	BLACK E-COATED
4	CONDUCTOR - 16 AWG. 26 x #30 COPPER STRANDING, 600V	PVC	SEE WIRING DIAGRAM
5	FLAG LABEL	PLASTIC FILM	BLACK/YELLOW

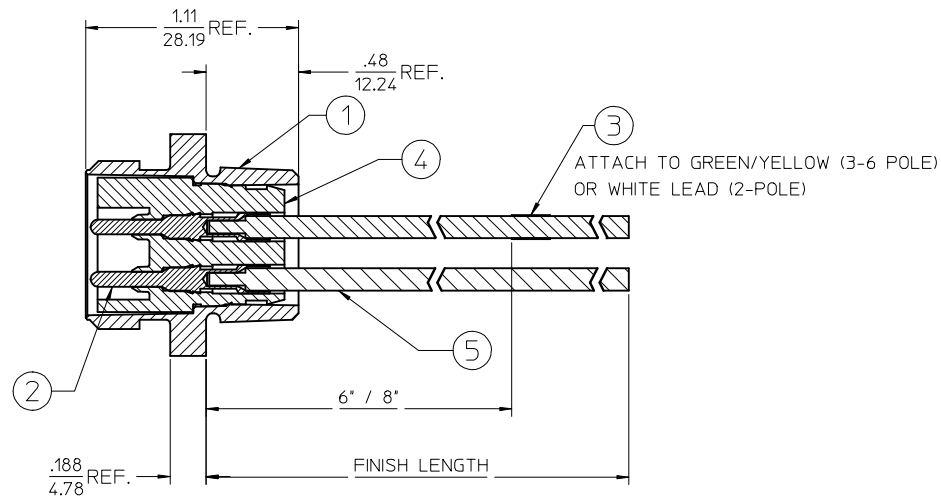
RLSD DRAWING EC NO: WNA2009-0645 DRWN: BWOODMAN 4/1/09 CHK'D: JM APPR: JFMURPHY 2009/04/08 A	DESCRIPTION REV	QUALITY SYMBOL <div>▽=0</div> <div>▽C=0</div>	GENERAL TOLERANCES (UNLESS SPECIFIED)			DIMENSION STYLE IN/MM		SCALE ----	DESIGN UNITS ----	<div><div></div><div></div></div> THIRD ANGLE PROJECTION			
				mm	INCH	DRAWN BY BW	DATE 2009/04/01	TITLE MINI-CHANGE RECEPTACLE 3 POLE MALE 1/2 NPT US COLOR CODE <div><div>molex</div>MOLEX INCORPORATED</div>					
			4 PLACES	±----	±----	CHECKED BY LH	DATE 2009/04/01						
			3 PLACES	±----	±----	APPROVED BY	DATE				----	----	
			2 PLACES	±----	±.01	MATERIAL NO. SEE CHART					DOCUMENT NO. SD-130013-003	SHEET NO. 1 OF 1	
			1 PLACE	±0.3	±----	SIZE C			THIS DRAWING CONTAINS INFORMATION THAT IS PROPRIETARY TO MOLEX INCORPORATED AND SHOULD NOT BE USED WITHOUT WRITTEN PERMISSION				
			ANGULAR ±----°										
			DRAFT WHERE APPLICABLE MUST REMAIN WITHIN DIMENSIONS										

FACE VIEW - MALE INSERT SCALE 2 : 1

1 WHITE 2 BLACK	1 GREEN/YELLOW 2 BLACK 3 WHITE	1 BLACK 2 WHITE 3 RED 4 GREEN/YELLOW	1 WHITE 2 RED 3 GREEN/YELLOW 4 ORANGE 5 BLACK	1 WHITE 2 RED 3 GREEN/YELLOW 4 ORANGE 5 BLACK 6 BLUE



MALE INSERT - FRONT VIEW



SECTION Z-Z

FINAL ASSEMBLY
1300130076

ENTER DESCRIPTION EC NO: WNA2010-0057 DRAWN BY: NKUMAR01 CHKD: JFMURPHY APPR: JFMURPHY DATE: 2009/07/31 DATE: 2009/08/10 REV: A	DESCRIPTION	QUALITY SYMBOLS ▽=0 ▽=0	GENERAL TOLERANCES (UNLESS SPECIFIED)		DIMENSION STYLE IN/MM		SCALE 2:1	DESIGN UNITS INCH	THIRD ANGLE PROJECTION
				mm	INCH	DRAWN BY NKUMAR01	DATE 31/07/09	TITLE MC 2P MR 12IN. 16/1 PVC	
			4 PLACES	± ---	± ---	CHECKED BY BWOODMAN	DATE 31/07/09		
			3 PLACES	± ---	± ---	APPROVED BY JFMURPHY	DATE 31/07/09		
			2 PLACES	± ---	± ---	MOLEX MOLEX INCORPORATED			
1 PLACE		± ---	± ---	ANGULAR ±1/2°		MATERIAL NO. 9999999999	DOCUMENT NO. SD-130013-076	SHEET NO. 1 OF 2	
DRAFT WHERE APPLICABLE MUST REMAIN WITHIN DIMENSIONS			SIZE C		THIS DRAWING CONTAINS INFORMATION THAT IS PROPRIETARY TO MOLEX INCORPORATED AND SHOULD NOT BE USED WITHOUT WRITTEN PERMISSION				

J

I

H

G

F

E

D

C

B

A

J

I

H

G

F

E

D

C

B

A

MALE RECEPTACLE ASSEMBLY				
2 POLE	3 POLE	4 POLE	5 POLE	6 POLE
QUANTITY				
1	1	1	1	1
2	3	4	5	6
1	1	1	1	1
1				
	1			
		1		
			1	
				1
1	1	1	1	1
				1
	1	1	1	1
			1	1
		1	1	1
1	1	1	1	1

Sl. No.	DESCRIPTION	MATERIAL	FINISH
1	RECEPTACLE SHELL	ZINC DIECAST	BLACK E-COAT
2	PIN CONTACT 16AWG	COPPER ALLOY	GOLD PLATED
3	LABEL	PLASTIC FILM	BLACK/YELLOW
4	2P MALE INSERT PVC A SIZE	PVC	YELLOW
	3P MALE INSERT PVC A SIZE	PVC	YELLOW
	4P MALE INSERT PVC A SIZE	PVC	YELLOW
	5P MALE INSERT PVC A SIZE	PVC	YELLOW
	6P MALE INSERT PVC A SIZE	PVC	YELLOW
5	#16-1 WHT PVC WIRE UL1015	PVC JACKET	WHITE
	#16-1 RED PVC WIRE UL1015	PVC JACKET	RED
	#16-1 ORN PVC WIRE UL1015	PVC JACKET	ORANGE
	#16-1 GRN/YEL PVC WIRE UL1015	PVC JACKET	GREEN/YELLOW
	#16-1 BLU PVC WIRE UL1015	PVC JACKET	BLUE
	#16-1 BLK PVC WIRE UL1015	PVC JACKET	BLACK

POLE COUNT	MAX. VOLTAGE RATING	MAX. CURRENT RATING
2 POLE	600 VOLTS	13 AMPS
3 POLE	600 VOLTS	13 AMPS
4 POLE	600 VOLTS	10 AMPS
5 POLE	600 VOLTS	8 AMPS
6 POLE	600 VOLTS	8 AMPS

PART NUMBER	DESCRIPTION	FINISHED LENGTH
1300130076	1R2006A20A120	12.0" +.75" -0 [0.3M +19.1MM -0]
1300130084	1R2006A20F060	6.0' +2.19" -0 [1.8M +55.6MM -0]
1300130202	1R3006A20A120	12.0" +.75" -0 [0.3M +19.1MM -0]
1300130215	1R3006A20F060	6.0' +2.19" -0 [1.8M +55.6MM -0]
1300130353	1R4006A20A120	12.0" +.75" -0 [0.3M +19.1MM -0]
1300130361	1R4006A20F060	6.0' +2.19" -0 [1.8M +55.6MM -0]
1300130493	1R5006A20A120	12.0" +.75" -0 [0.3M +19.1MM -0]
1300130503	1R5006A20F060	6.0' +2.19" -0 [1.8M +55.6MM -0]
1300130593	1R6006A20A120	12.0" +.75" -0 [0.3M +19.1MM -0]
1300130605	1R6006A20F060	6.0' +2.19" -0 [1.8M +55.6MM -0]

ENTER DESCRIPTION
EC NO: WNA2010-0057
DRAWN BY: NKUMAR01 2009/07/31
CHKD: JF
APPR: JFMURPHY 2009/08/10

DESCRIPTION
REV

QUALITY SYMBOLS
▽=0
▽=0

GENERAL TOLERANCES (UNLESS SPECIFIED)
mm INCH
4 PLACES ± --- ± ---
3 PLACES ± --- ± ---
2 PLACES ± --- ± ---
1 PLACE ± --- ± ---
ANGULAR ±1/2°
DRAFT WHERE APPLICABLE
MUST REMAIN WITHIN DIMENSIONS

DIMENSION STYLE
IN/MM
DRAWN BY: NKUMAR01 DATE: 31/07/09
CHECKED BY: BWOODMAN DATE: 31/07/09
APPROVED BY: JFMURPHY DATE: 31/07/09


MATERIAL NO.
9999999999

SIZE
C

SCALE
2:1
TITLE
MC 2P MR 12IN.
16/1 PVC

DESIGN UNITS
INCH

THIRD ANGLE PROJECTION

 MOLEX INCORPORATED

DOCUMENT NO.
SD-130013-076

SHEET NO.
2 OF 2

tb_frame_C_P_AM_T
Rev. E 2006/04/15

121110987654321