



PRODUCT DATASHEET

Lena series

last update 23/2/2014

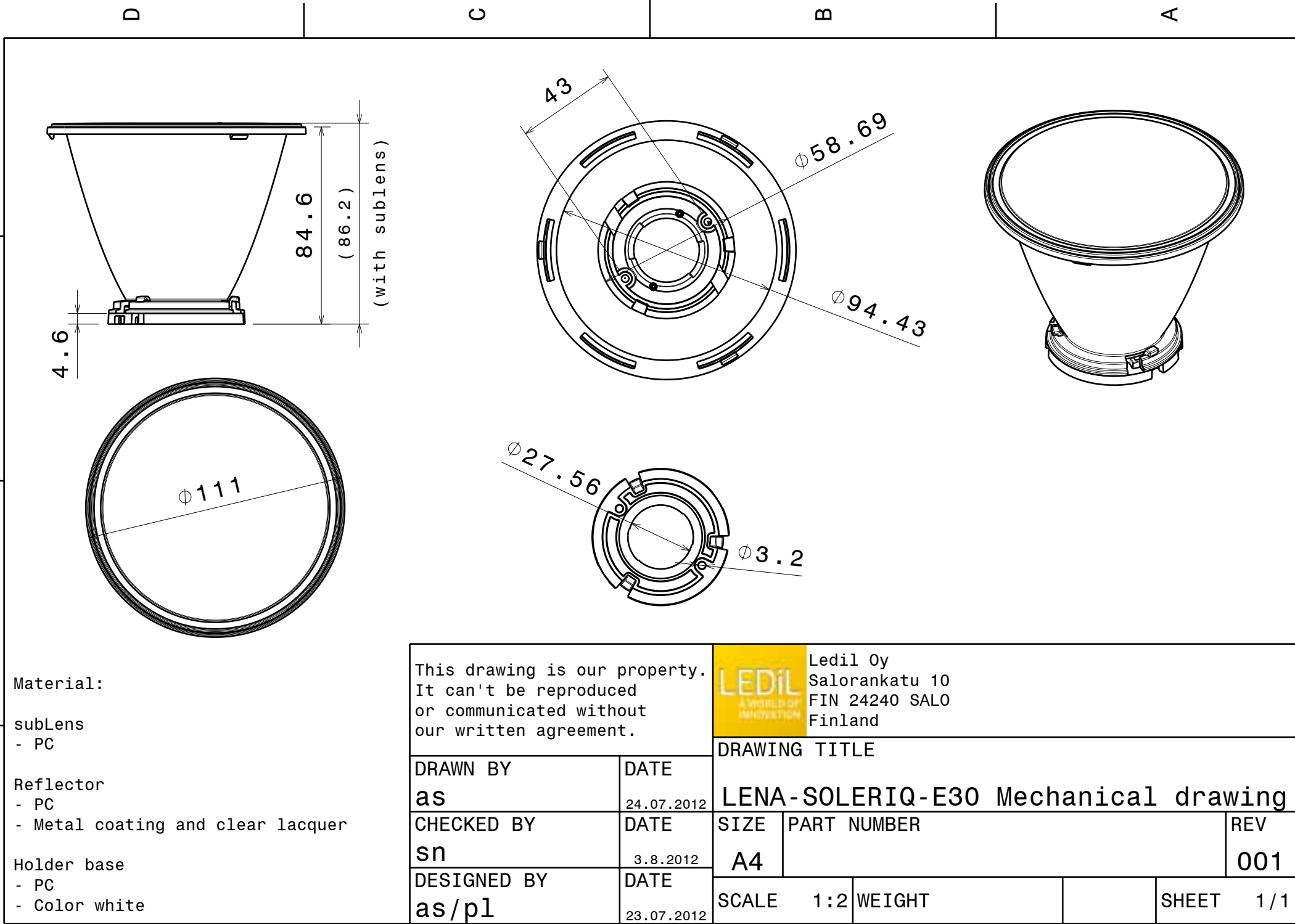
DETAILS

Product Number	CN13108_LENA-M-DL
Family	Lena
Type	RefPack
Color	metal
Diameter	111 mm
Height	86.2 mm
Style	round
Optic Material	PC
Holder Material	PC
Fastening	socket, screw
Status	ready
ROHS Compliant	Yes
Date Updated	23/02/2014

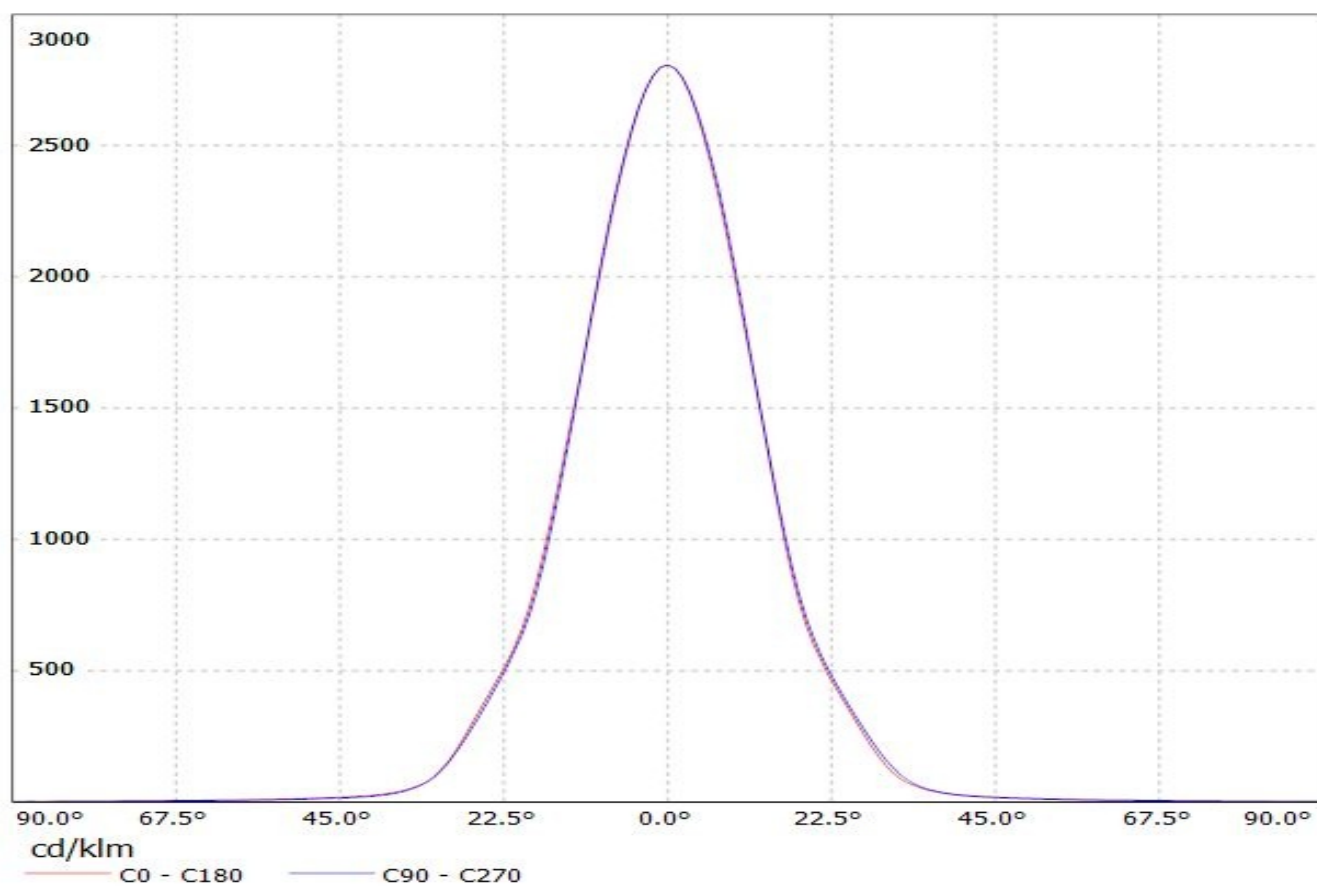


OPTICAL PROPERTIES

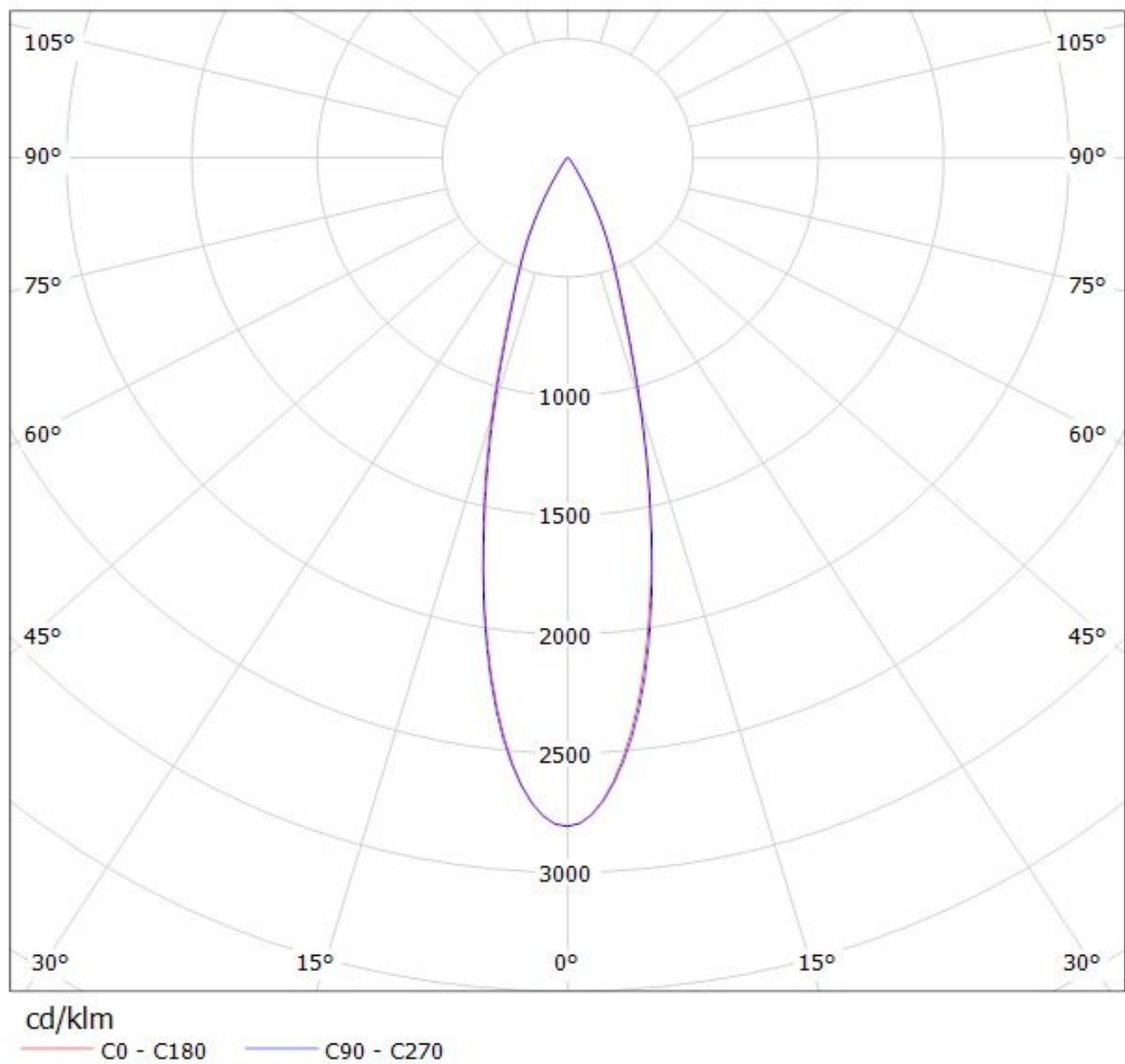
LED	Viewing Angle	Light Beam	Efficiency	cd/lm	connector
Soleriq E30	27 degrees		78 %	2.800	-



Luminaire: LEDiL Oy CN13108_LENA-M-DL_(Soleriq_E30) Eff.78%
Lamps: 1 x Osram Soleriq E30 (1240lm@250mA)



Luminaire: LEDiL Oy CN13108_LENA-M-DL_(Soleriq_E30) Eff.78%
Lamps: 1 x Osram Soleriq E30 (1240lm@250mA)



NOTE: The typical divergence will be changed by different color, chip size and chip position tolerance. The typical total divergence is the full angle measured where the luminous intensity is half of the peak value.

GENERAL INFORMATION

- Product series especially designed & optimized for series of LEDs.
- Special care taken to make light distribution as uniform as possible.
- Reflector is made of aluminium coated PC (120 degrees of Celcius / 248 degrees of Fahrenheit) with protective lacquer (short term 100 degrees of Celcius / 212 degrees of Fahrenheit).

Note! Due to use of high power COB's with this product, special attention to proper thermal design is highly recommended. LEDiL has no liability for direct, indirect or consecutive damages arising from the LEDiL products being used outside of the recommended temperature range.