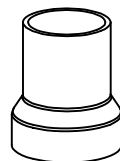
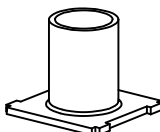


PRODUCT NUMBER:
10009275-XYZ1

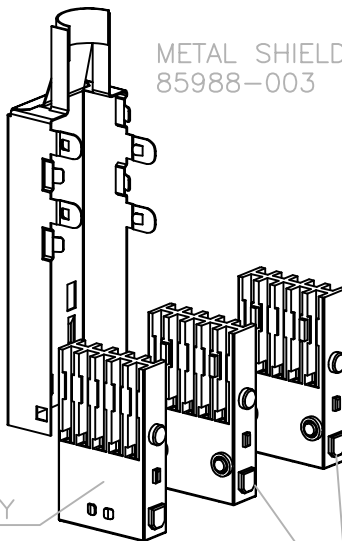
CRIMPED VERSION



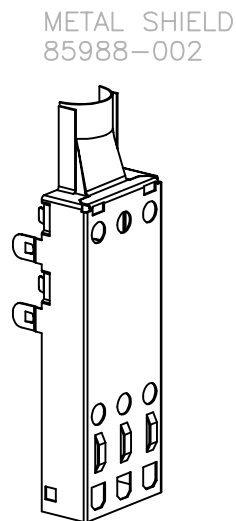
OUTER FERRULE
520XX-001 (SEE NOTE 3)



INNER FERRULE
85677-001



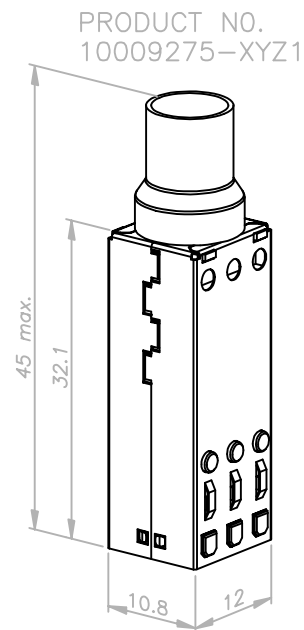
METAL SHIELD
85988-003





METAL SHIELD
85988-002

TERMINAL BLOCK ASS'Y
72377-X1Z1

TERMINAL BLOCK ASS'Y
72377-X2Z1



PRODUCT NO.
10009275-XYZ1

mat'l. code				tolerances unless otherwise specified		CUSTOMER COPY	 ELECTRONICS www.fciconnect.com		
lfr	ecn no	dr	date	linear					
A	B20129	BVE	070302	angles		projection 	title 5x6 Shielded CABLE CONNECTOR KIT		
				dr	B.Verreydt	070302	product family	Metral(tm)	code
				enrg	P.Cloes	070302	size	dwg no	213
				chr			scale	1:1	sheet
				appd					1 of 2
sheet	revision	A	A						
index	sheet	1	2						

PRODUCT NUMBER:
10009275-XYZ1

NOTES:

1. SEE APPLICATION SPECIFICATION GES-20-003 FOR INSTRUCTIONS ON WIRE INSERTION AND ASSEMBLY OF COMPONENTS FOR CONNECTORS
2. PLUGS INTO SHIELDED HEADERS 72031, 72032, SHROUDS 72033 AND 72034.
3. OUTER FERRULE 52043-001 IS TO BE USED FOR APPROVED CABLES: ET391250; ET390564; 1AC001751002; 1AC0002800001
OUTER FERRULE 52082-001 IS TO BE USED FOR APPROVED CABLE: 1AC0002800003

MATERIAL:

TERMINAL BLOCKS: GLASS FILLED 612
POLYAMIDE (UL 94 V-0)

CONTACTS:

PHOSPHOR BRONZE
SOLDER FINISH ON IDC DIMPLES

ORDERING INFORMATION FOR KITS:

ORDER KITS 10009275-XYZ1 WHERE
PLATING IN CONTACT AREA:

X=1 FOR 0.8 μ m GOLD

X=2 FOR 2.0 μ m GOLD

X=3 FOR 1.3 μ m GOLD

X=9 FOR 0.8 μ m GXT™




LATCH TYPE:

Y<>0 CRIMPED VERSION FOR USE WITH LATCH 85991-002 OR 85992-002

COPPER WIRE SIZE:

Z=1 FOR 0.40 - 0.51 mm DIA (26 TO 24 AWG)

Z=2 FOR 0.25 - 0.32 mm DIA (30 TO 28 AWG)

mat'l. code				tolerances unless otherwise specified		CUSTOMER COPY	 ELECTRONICS www.fciconnect.com	
ltr	ecn no	dr	date	linear		projection 	title	
A	B20129	BVE	070302				5x6 Shielded	
				angles		mm 	product family	
				dr	B.Verreydt		070302	Metral(tm)
				enrg	P.Cloes	070302	code	
				chr			size	
				appd			A3 10009275	
sheet index		revision sheet				scale	2 of 2	
						1:1		