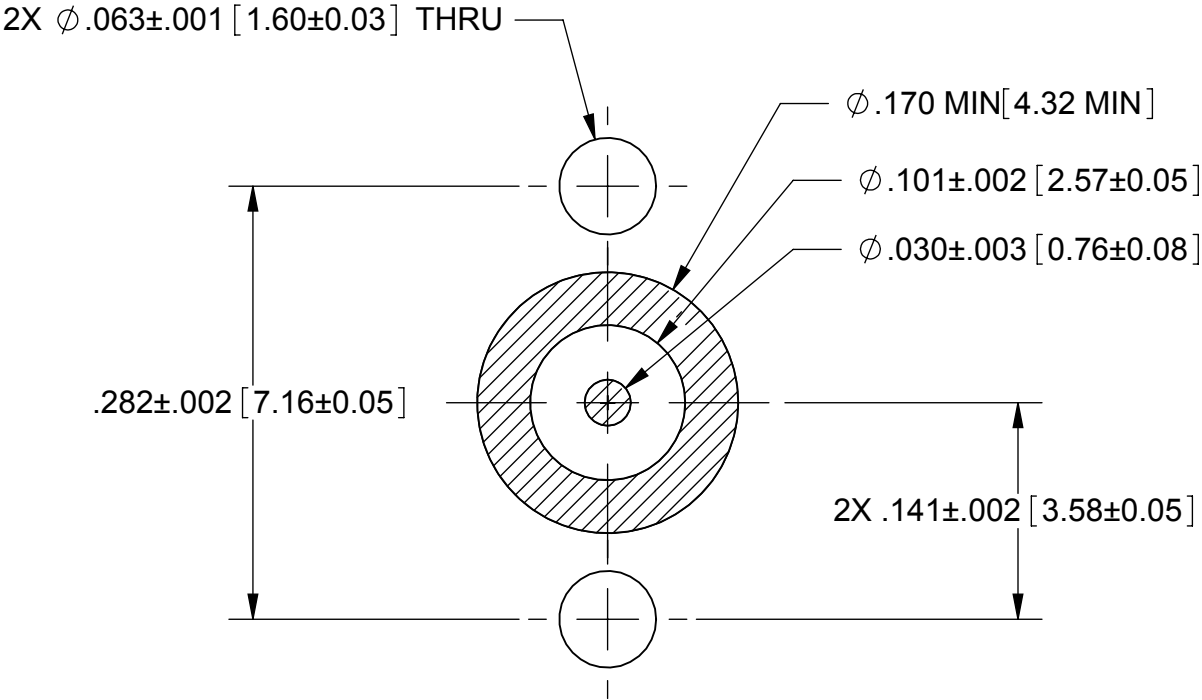
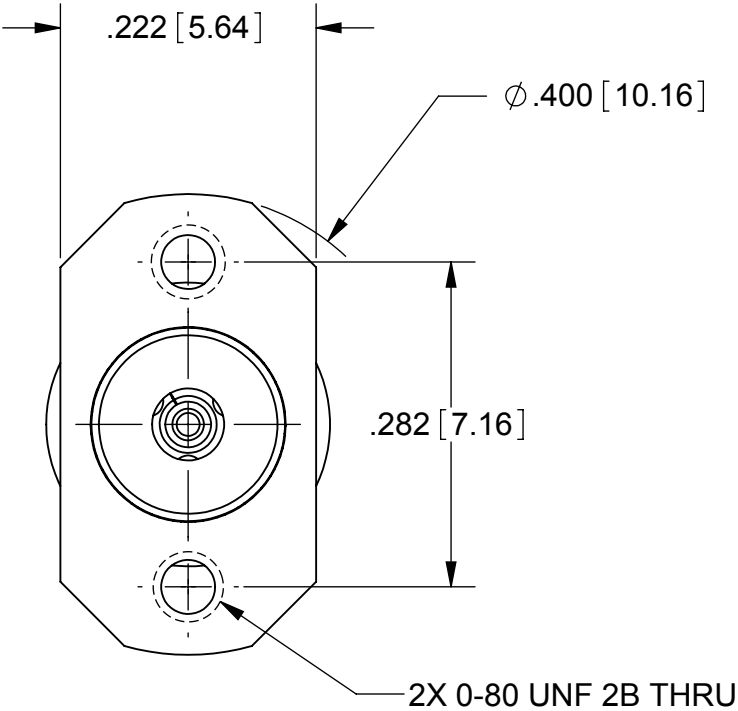
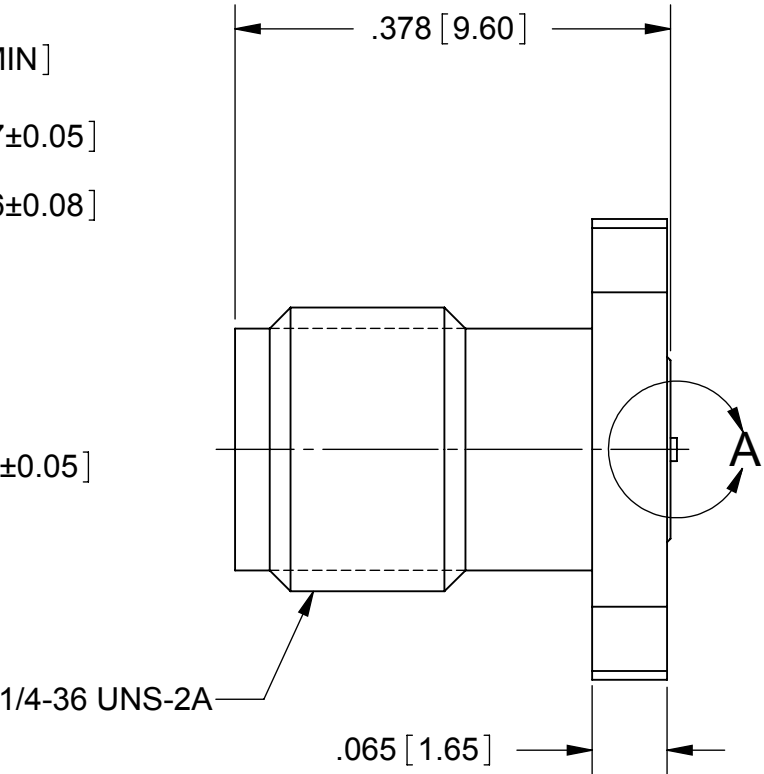


PRODUCT DATA DRAWING

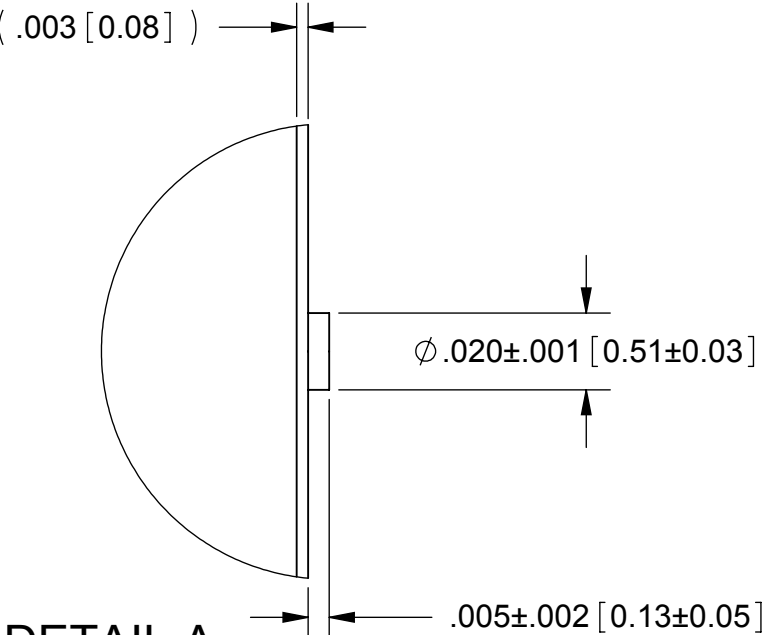
REVISION HISTORY			
REV	DESCRIPTION	DATE	APPROVED
01	PRELIMINARY	08/13	PJS
-	NRN 38351	10/13	STW
A	DCN 41388	06/15	STW



RECOMMENDED PCB LAYOUT



MATERIAL:	
BODY & INSERT:	STAINLESS STEEL PER AMS-5640, ALLOY UNS S30300, TYPE 1
CONTACT:	BERYLLIUM COPPER PER ASTM B196, ALLOY No. UNS C17300, TD04
INSULATOR:	ULTEM PER ASTM D5205
FINISH:	
BODY & INSERT:	PASSIVATED PER AMS-2700.
CONTACT:	GOLD PER ASTM B488, TYPE II, CODE C, CLASS 1.27, OVER NICKEL PER AMS-QQ-N-290, CLASS 1, .00005" MIN.



DETAIL A
SCALE 20 : 1

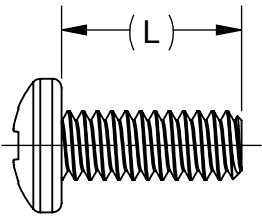
PERFORMANCE:	
IMPEDANCE:	50 OHMS
FREQ. RANGE:	DC TO 40.0 GHz
VSWR:	1.30:1 DC TO 40.0 GHz
INSERTION LOSS:	.05 X SQRT(F(F IN GHz))
DWV:	500 VRMS
ENGAGEMENT/ DISENGAGEMENT:	2 IN-LBS

MATERIAL:	SEE NOTES	DIMENSIONS ARE IN INCHES TOLERANCES: FRACTIONAL: $\pm 1/64$ ANGULAR: X° $\pm 1^{\circ}0'$ X°X' $\pm 15'$ DECIMAL: .X $\pm .030$.XX $\pm .010$.XXX $\pm .005$ INTERPRET DIMENSIONS AND TOLERANCES PER ASME Y14.5M - 1994	UNLESS OTHERWISE SPECIFIED 1) ALL DIMENSIONS ARE IN INCHES (MILLIMETERS) 2) ALL DIMENSIONS ARE AFTER PLATING. 3) BREAK CORNERS & EDGES .005 R. MAX. 4) CHAM. 1ST & LAST THREADS. 5) SURFACE ROUGHNESS 63-MIL-STD-10. 6) DIA.'S ON COMMON CENTERS TO BE CONCENTRIC WITHIN .005 T.I.R. 7) REMOVE ALL BURRS	2400 Centrepark West Drive, Suite 100 West Palm Beach, FL 33409
FINISH:	SEE NOTES			
SURFACE AREA:	N/A			
THE INFORMATION CONTAINED IN THIS DRAWING IS THE SOLE PROPERTY OF SV MICROWAVE, INC. ANY REPRODUCTION IN PART OR AS A WHOLE WITHOUT THE WRITTEN PERMISSION OF SV MICROWAVE, INC IS PROHIBITED.		THIRD ANGLE PROJECTION	DRAWN: PJS 08/16/13	TITLE: 2.92MM JACK FL MT W/ 0-80 UNF THD
			CHECKED:	
			APPROVED:	
			SCALE: 6:1	SHEET 1 OF 2

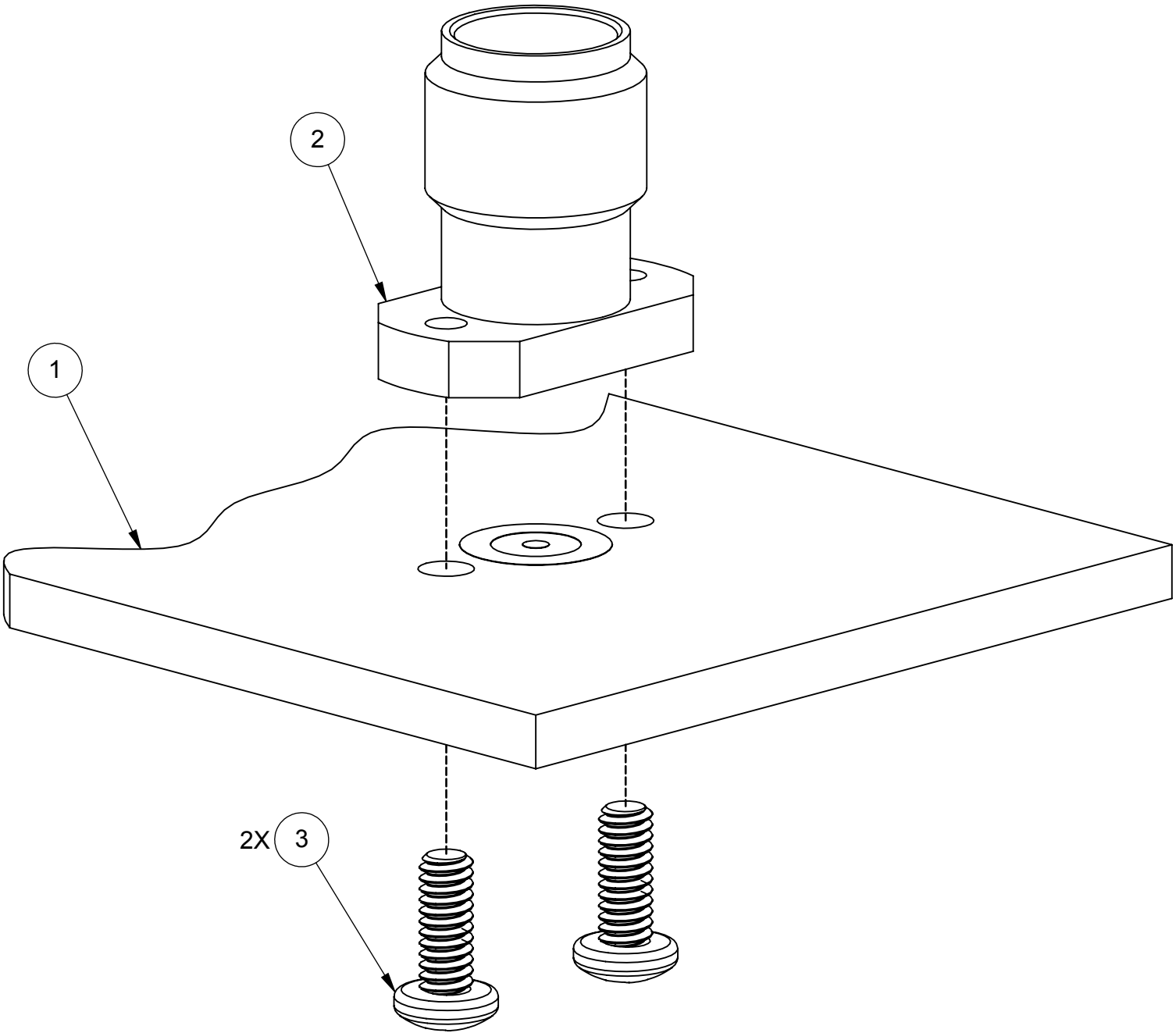
PRODUCT DATA DRAWING

REVISION HISTORY			
REV	DESCRIPTION	DATE	APPROVED
01	PRELIMINARY	08/13	PJS
-	NRN 38351	10/13	STW
A	DCN 41388	06/15	STW

1. PCB
2. 2.92 mm JACK-
ALIGN THREADED SCREW HOLES OF CONNECTOR
WITH MOUNTING HOLES ON THE PCB.
3. MOUNTING SCREWS-
USING #0-80 UNF MACHINE SCREWS, ATTACH 2.92 mm JACK
TO PCB. TIGHTEN SCREWS BETWEEN 0.5-0.8 IN-LBS(FOR
THICKNESS OF .030" AND LARGER). SCREWS NOT TO
PROTRUDE PAST FLANGE MORE THAN .092 INCHES. SEE
TABLE FOR RECOMMENDED SCREW DIMENSIONS.



RECOMMENDED SCREW DIMENSIONS	
L IN [MM]	PCB THICKNESS IN [MM]
.38[9.5]	.170[4.32] TO .295[7.50]
.250[6.35]	.070[1.78] TO .165[4.19]
.190[4.76]	.030[.76] TO .096[2.44]



NOTES:
1. OPERATING TEMPERATURE OF CONNECTOR ON PCB IS 0°C TO +125°C.

MATERIAL:	SEE NOTES	DIMENSIONS ARE IN INCHES TOLERANCES: FRACTIONAL: $\pm 1/64$ ANGULAR: X° $\pm 1^{\circ}0'$ X°X' $\pm 15'$ DECIMAL: .X $\pm .030$.XX $\pm .010$.XXX $\pm .005$ INTERPRET DIMENSIONS AND TOLERANCES PER ASME Y14.5M - 1994	UNLESS OTHERWISE SPECIFIED 1) ALL DIMENSIONS ARE IN INCHES (MILLIMETERS) 2) ALL DIMENSIONS ARE AFTER PLATING. 3) BREAK CORNERS & EDGES .005 R. MAX. 4) CHAM. 1ST & LAST THREADS. 5) SURFACE ROUGHNESS 63-MIL-STD-10. 6) DIA.'S ON COMMON CENTERS TO BE CONCENTRIC WITHIN .005 T.I.R. 7) REMOVE ALL BURRS	SV Microwave, Inc. 2400 Centrepark West Drive, Suite 100 West Palm Beach, FL 33409	
FINISH:	SEE NOTES			TITLE: 2.92MM JACK FL MT W/ 0-80 UNF THD	
SURFACE AREA:	N/A				
PROPRIETARY THE INFORMATION CONTAINED IN THIS DRAWING IS THE SOLE PROPERTY OF SV MICROWAVE, INC. ANY REPRODUCTION IN PART OR AS A WHOLE WITHOUT THE WRITTEN PERMISSION OF SV MICROWAVE, INC IS PROHIBITED.		THIRD ANGLE PROJECTION	DRAWN: PJS 08/16/13	SIZE B	CAGE CODE 95077
			CHECKED:	DWG. NO. SF1521-60061	
			APPROVED:	SCALE: 6:1	SHEET 2 OF 2