

**Ordering number CA12878_MIRA-M**

Family	Mira	FWHM	25 degrees
Type	Assembly	Efficiency	82 %
LED	MK-R	cd/Im	2.400
Color	White	Gerber File	Available
Diameter	35 mm		
Height	15.75 mm		
Style	Round		
Optic Material	PC		
Holder Material	PC		
Fastening	Tape		
Status	Ready		

**Ordering number CA12879_MIRA-W**

Family	Mira	FWHM	42 degrees
Type	Assembly	Efficiency	80 %
LED	MK-R	cd/Im	1.200
Color	White	Gerber File	Available
Diameter	35 mm		
Height	15.75 mm		
Style	Round		
Optic Material	PC		
Holder Material	PC		
Fastening	Tape		
Status	Ready		

**Ordering number CA12880_MIRA-WW**

Family	Mira	FWHM	60 degrees
Type	Assembly	Efficiency	80 %
LED	MK-R	cd/Im	0.800
Color	White	Gerber File	Available
Diameter	35 mm		
Height	15.75 mm		
Style	Round		
Optic Material	PC		
Holder Material	PC		
Fastening	Tape		
Status	Ready		

NOTE: The typical divergence will be changed by different color, chip size and chip position tolerance. The typical total divergence is the full angle measured where the luminous intensity is half of the peak value.



PRODUCT DATASHEET

Mira series

last update 4/2/2013

GENERAL INFORMATION

- Product series especially designed & optimized for MK-R series of LEDs.
- Special care taken to make light distribution as uniform as possible.
- Lens material optical grade PC with high UV and temperature resistance (120 degrees of Celcius / 248 degrees of Fahrenheit). Allows use of high current and temperature conditions.

Please find more information about used materials from below:

http://ledil.fi/sites/default/files/Documents/Technical/Material/PC%20Makrolon%202400_2407_2456_2458-UL.pdf

- Optic holder molded by high quality PC material (120 dergees of Celcius / 248 degrees of Fahrenheit).

- Fastening to heat sink with a PU foam adhesive tape of automotive grade. Please find fastening details by clicking link: http://www.ledil.com/datasheets/DataSheet_TAPE.pdf

NOTE 1: We advise customer to ensure the suitability and sufficiency of the bond in the end product. For example, mechanical stress, vibration and holes on the surface of the circuit board weaken the strength of the tape.

NOTE 2: Assembly to the surface must be made straight, so the tape bonds constant and balanced with fastening surface. Slanted assembly might cause unbalanced bond to the surface. All surfaces where tape is applied must be clean, dry and free from grease and dirt.

If cleaning of PCB surfaces is needed, please follow strictly the cleaning instructions of your LED manufacturer - this is important as cleaning shall under no circumstances damage LEDs or other electronics components on the PCB.

Further note that optical components shall not be cleaned with any chemicals - only micro fiber cloth may be used to remove fingerprints or other traces from handling.

4

3

2

1

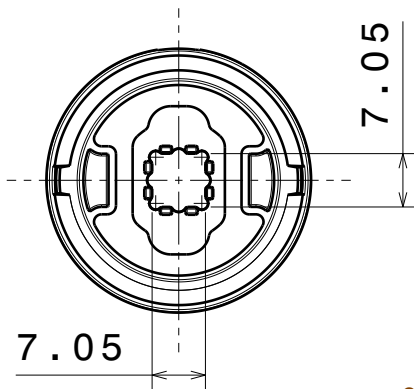
D

C

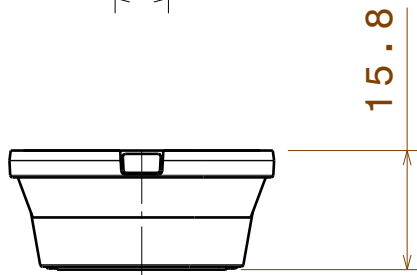
B

A

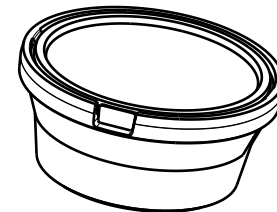
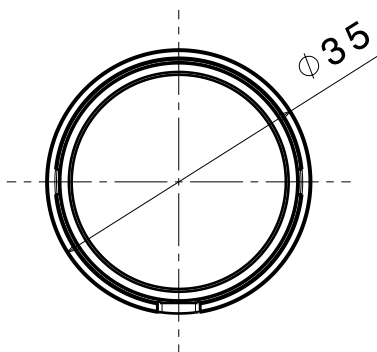
Bottom view



Front view



Top view



Isometric view

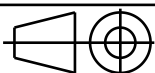
INDEX	PART NO	DESCRIPTION	MATERIAL	COLOUR
1	-	MIRA_LUXEON-M_ASSEMBLY	Lens and holder PC, Tape PU foam	

Tolerances if not otherwise shown
According to DIN ISO 2768-1
Linear measures:
Up to 30mm class F, otherwise class M.
According to DIN ISO 2768-2
Form and position: class K

LEDiL

Ledil Oy
Salorankatu 10
FIN 24240 SALO
Finland

THIRD ANGLE PROJECTION:



DRAWING TITLE

MIRA_LUXEON-M_ASSEMBLY

This drawing is the property
of LEDiL Oy. It may not be
reproduced, copied or
communicated without a written
agreement with LEDiL Oy."

SIZE

A4

PART NUMBER

-

SCALE

1:1

WEIGHT

-

SHEET

1 / 1

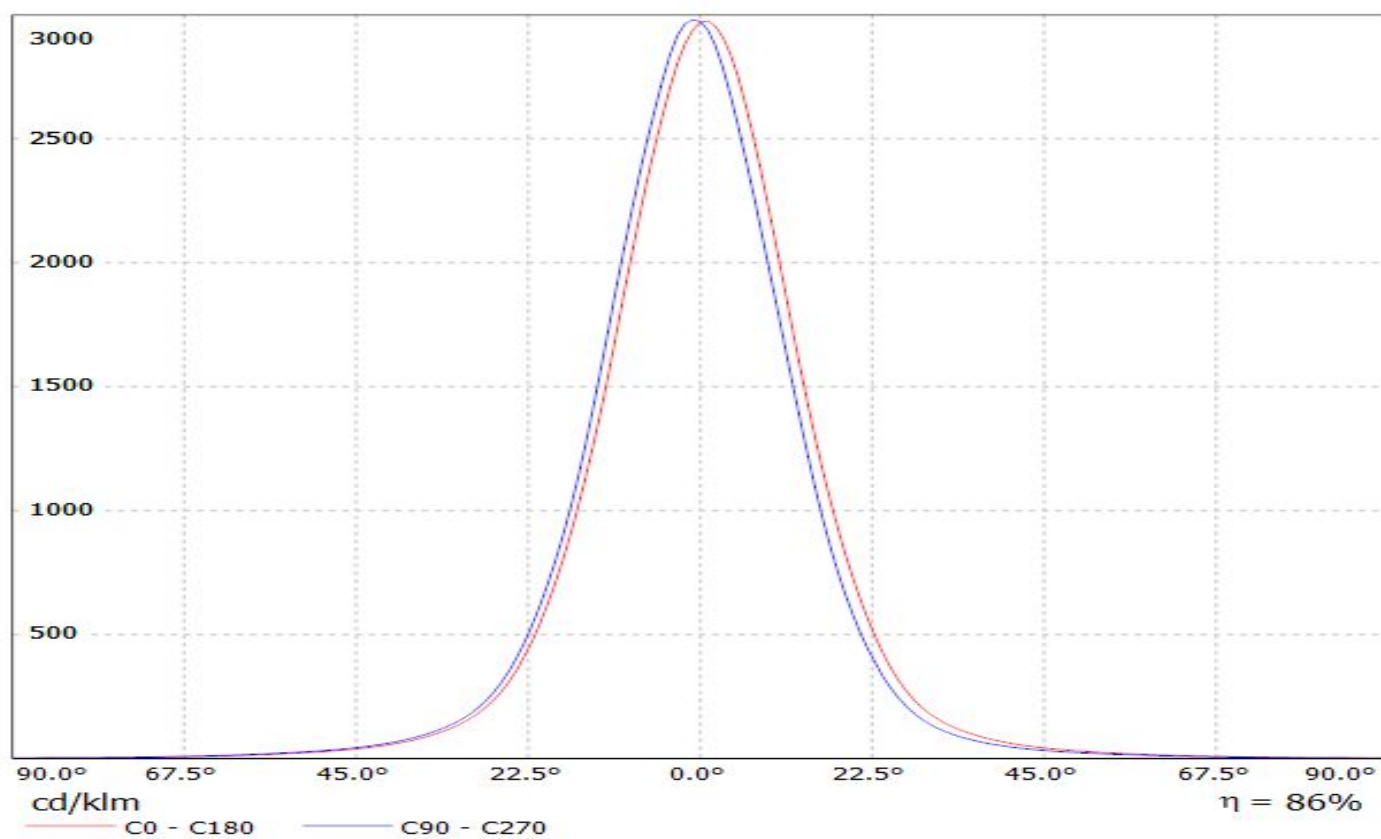
D

A

LEDiL Oy CA12803_EVA-M_(MKR) Eff. 85,8% / LDC (Linear)

Luminaire: LEDiL Oy CA12803_EVA-M_(MKR) Eff. 85,8%

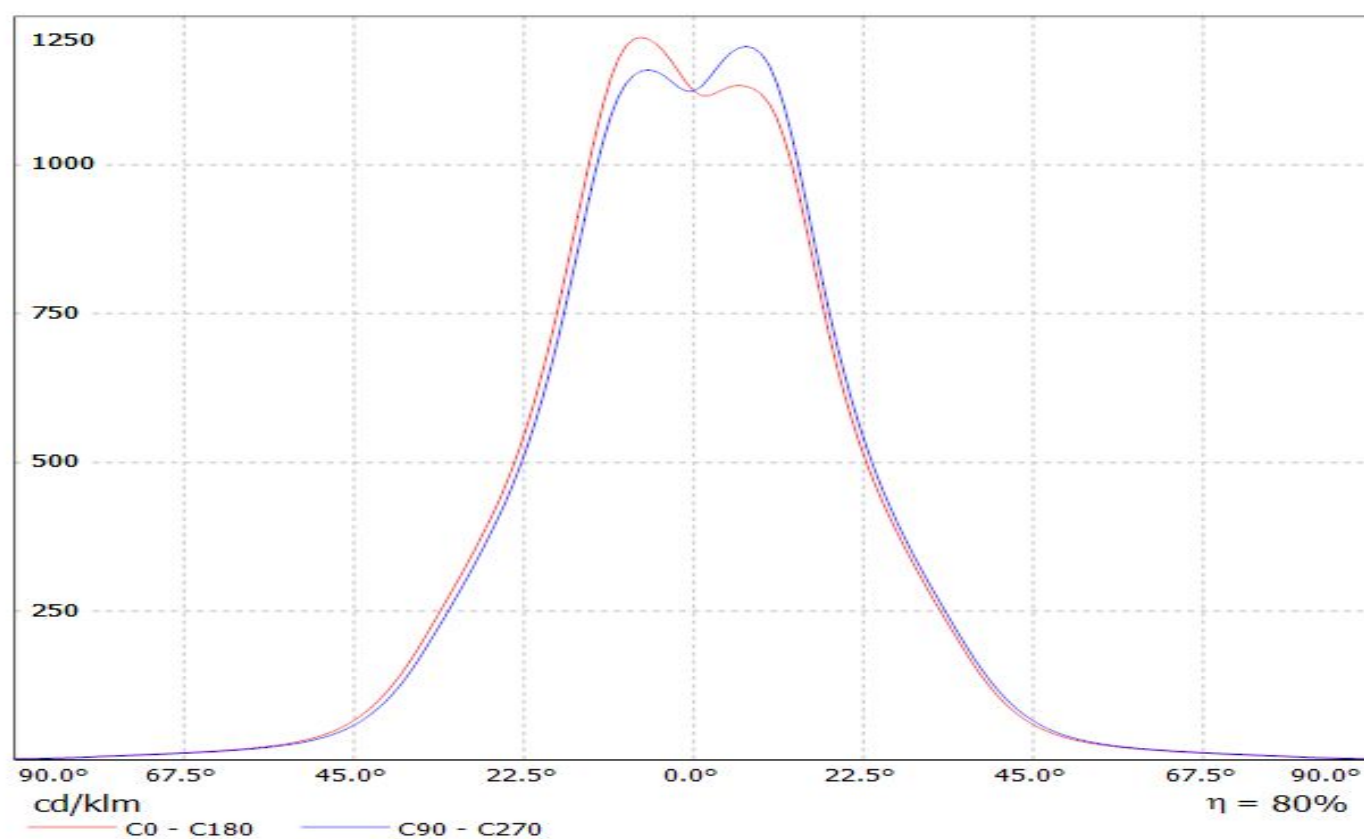
Lamps: 1 x Cree MKR (365lm@250mA)



LEDiL Oy CA12879_MIRA-W_(MKR) Eff. 80% / LDC (Linear)

Luminaire: LEDiL Oy CA12879_MIRA-W_(MKR) Eff. 80%

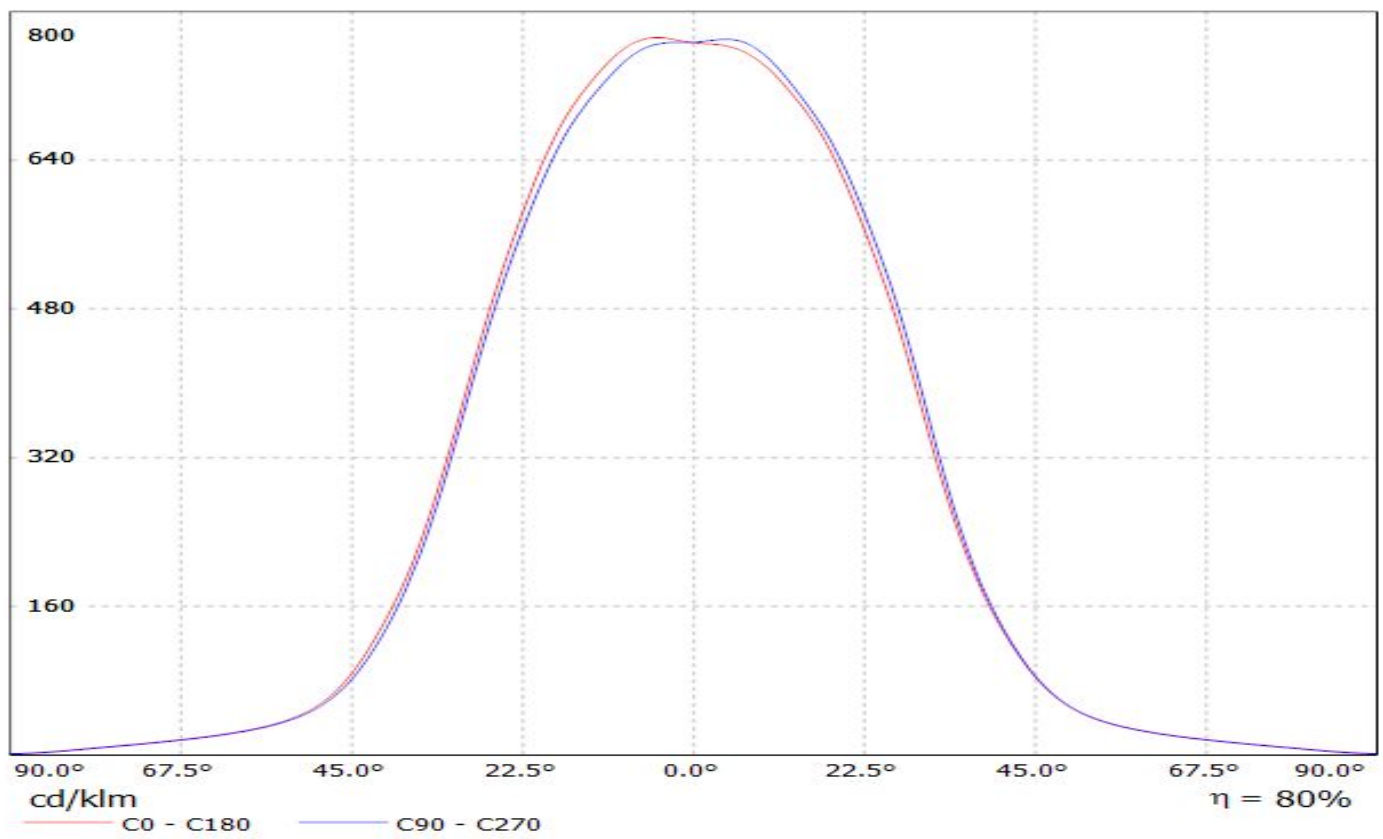
Lamps: 1 x MKR (365lm@250mA)



LEDiL Oy CA12880_MIRA-WW_(MKR) Eff. 80% / LDC (Linear)

Luminaire: LEDiL Oy CA12880_MIRA-WW_(MKR) Eff. 80%

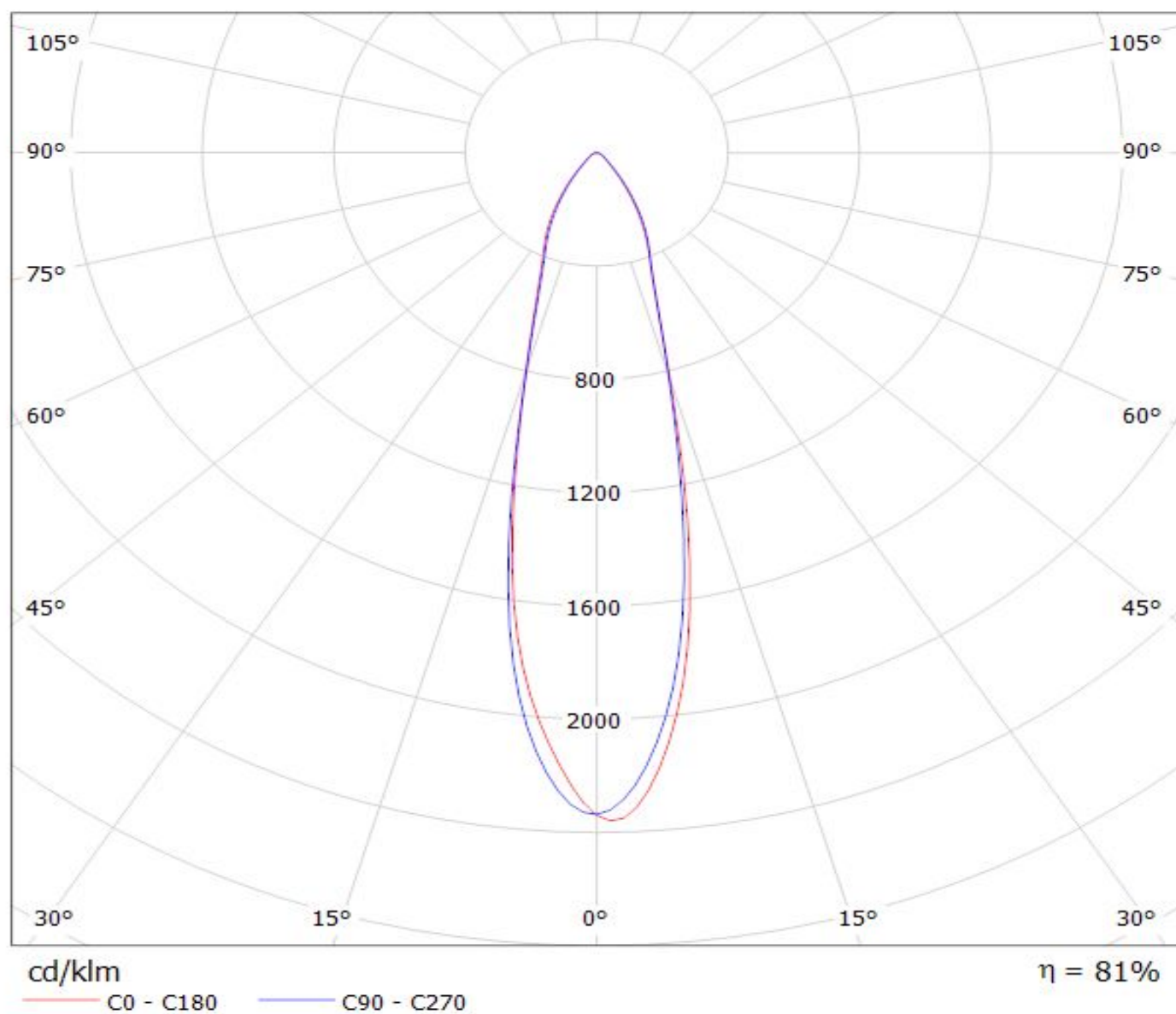
Lamps: 1 x MKR (365lm@250mA)



LEDiL Oy CA12878_MIRA-M_(MKR) Eff. 81,4% / LDC (Polar)

Luminaire: LEDiL Oy CA12878_MIRA-M_(MKR) Eff. 81,4%

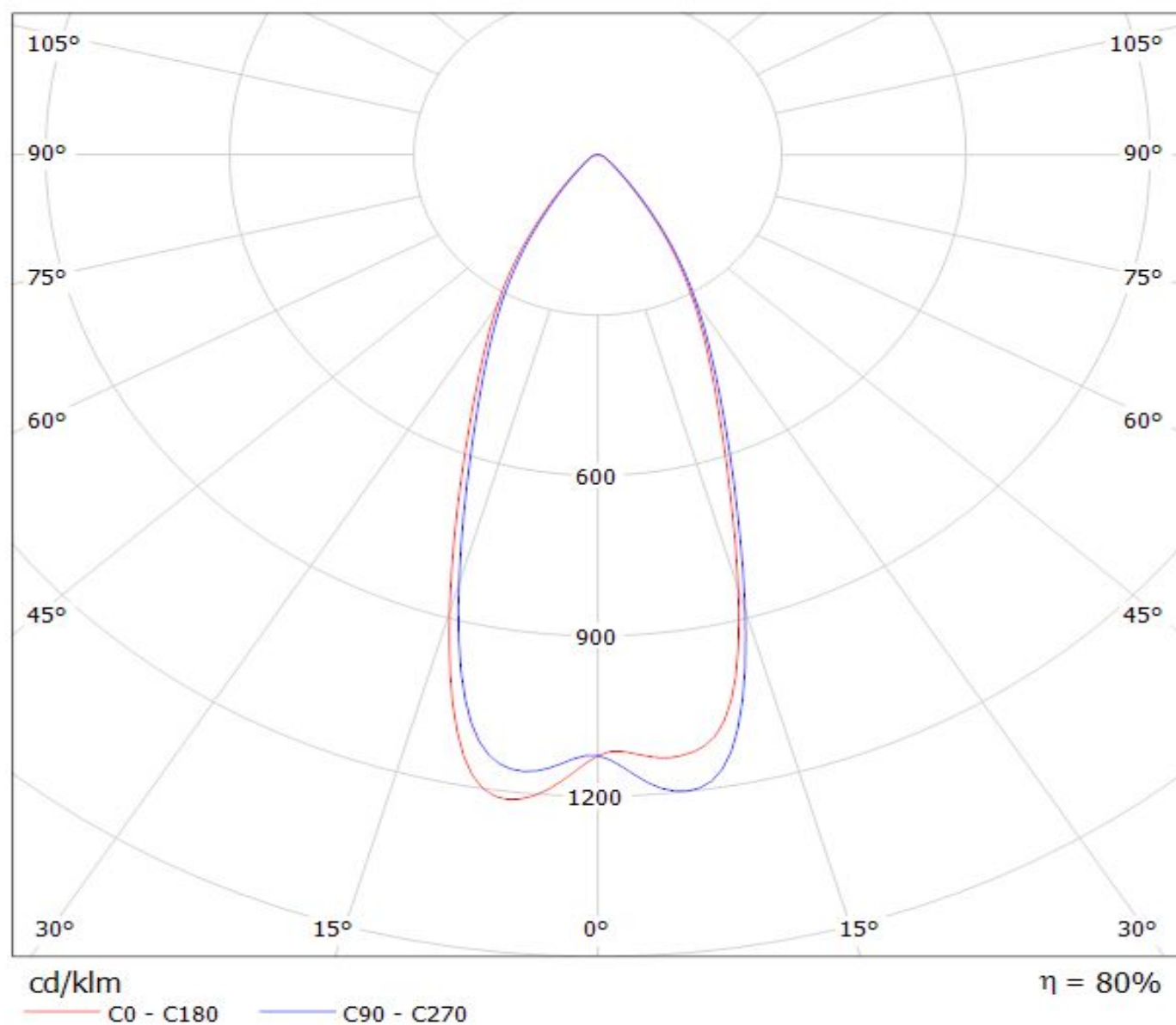
Lamps: 1 x MKR (365lm@250mA)



LEDiL Oy CA12879_MIRA-W_(MKR) Eff. 80% / LDC (Polar)

Luminaire: LEDiL Oy CA12879_MIRA-W_(MKR) Eff. 80%

Lamps: 1 x MKR (365lm@250mA)



LEDiL Oy CA12880_MIRA-WW_(MKR) Eff. 80% / LDC (Polar)

Luminaire: LEDiL Oy CA12880_MIRA-WW_(MKR) Eff. 80%
Lamps: 1 x MKR (365lm@250mA)

