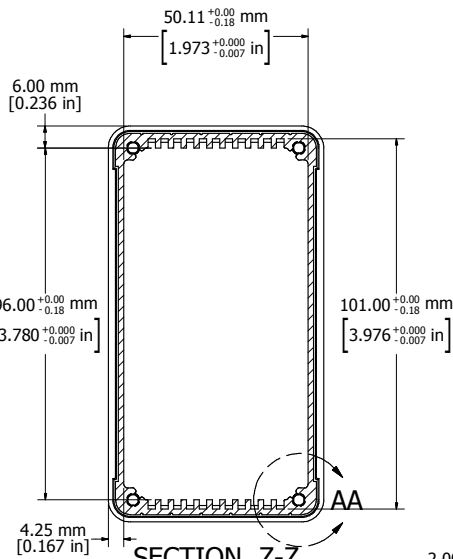


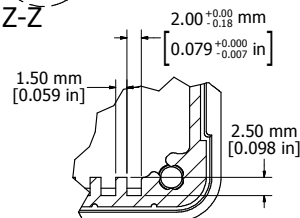
ASSEMBLY - VIEW FROM TOP



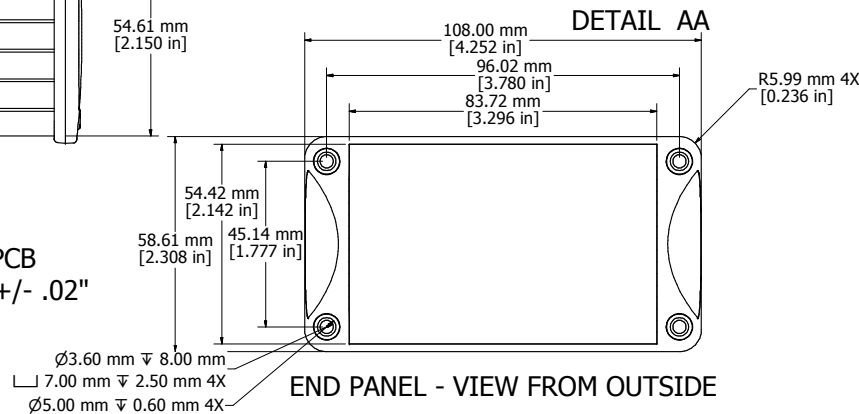
Fits 160mm (6.299") X 100mm (3.937") PCB  
Note: Aluminum extrusion has a tolerance of +/- .02"



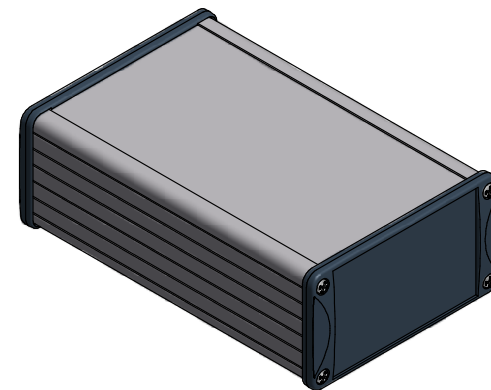
SECTION Z-Z



DETAIL AA



END PANEL - VIEW FROM OUTSIDE



## PROTECTION TO IP 65

Enclosures can be Factory Modified ( Milling, Drilling, Printing etc. )  
Contact Factory [mjm@hammondmfg.com](mailto:mjm@hammondmfg.com) for quotes  
Solid models of this enclosure available in STEP or IGES.

### NOTE

Purchased assembly includes box, end panels, stainless steel #6 Taptight screws, self adhesive rubber feet, gaskets and O-Rings.

Box made from Extruded Aluminum 6063.

End panels made from Type 380 Diecast Aluminum with a black powder paint finish.

### WATERPROOF 1457N1601

#### PART NUMBERS

Clear anodized box with black powder painted end panels	1457N1601
---	-----------

Black powder painted box and end panels	1457N1601BK
---	-------------

#### EMI/RFI SHIELDED (IP 64)

Clear anodized box with black powder painted end panels	1457N1601E
---	------------

Black powder painted box and end panels	1457N1601EBK
---	--------------

#### ACCESSORIES

See website for accessories.

**HAMMOND**  
**MANUFACTURING™**  
**1457N1601**  
[www.hammondmfg.com](http://www.hammondmfg.com)

# Mouser Electronics

Authorized Distributor

Click to View Pricing, Inventory, Delivery & Lifecycle Information:

[Hammond:](#)

[1457N1601E](#) [1457N1601EBK](#)