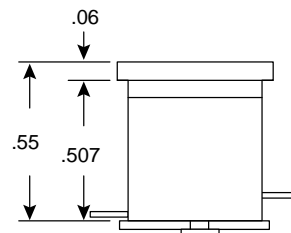
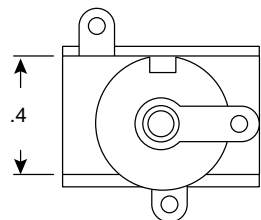


Dimensions (In.)



Specifications:

- Dimension (øD): 163-2101 (2mm), 163-2501 (2.4mm)
- Mounting type: chassis/panel mount
- Body type: open ABS plastic frame with NC switch
- Pin, contact, & terminals: silver plated brass
- Insulator: phenolic
- Insulation tube: polyethylene
- Contact resistance: 30mΩ max.
- Insulation resistance: 50MΩ min @ 500VDC
- Withstand voltage: 250VAC for 1 minute

Your source for quality electronics. Toll-free full service.

(800) 346-6873

<http://www.mouser.com>

Mouser Electronics

Authorized Distributor

Click to View Pricing, Inventory, Delivery & Lifecycle Information:

[Kobiconn:](#)

[163-2501](#)