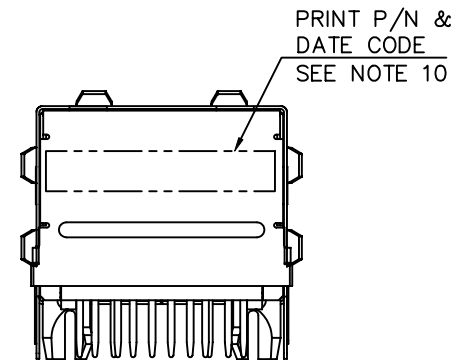
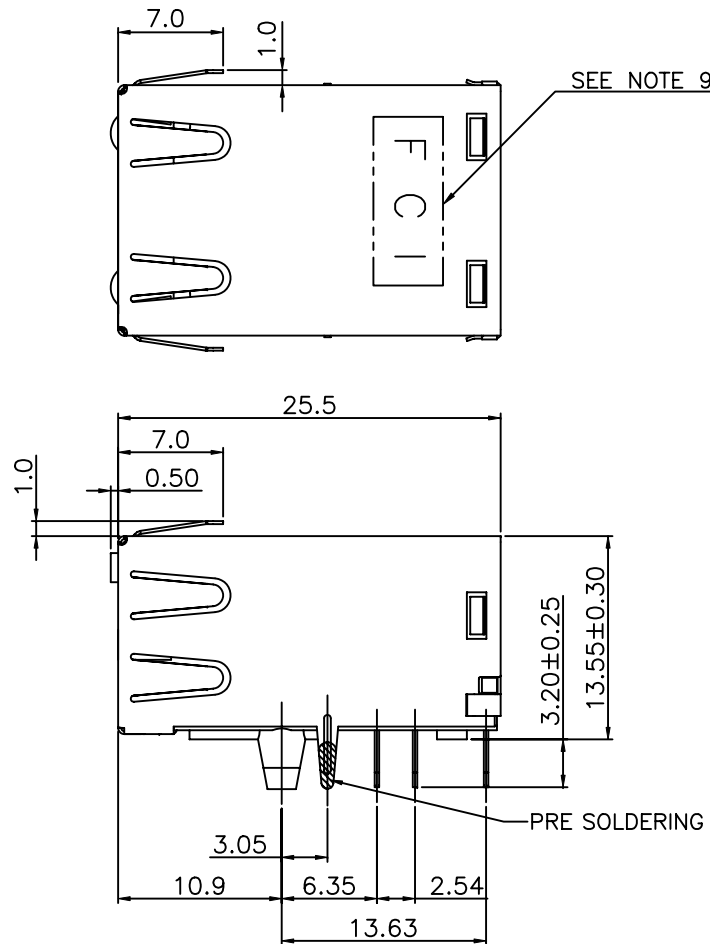
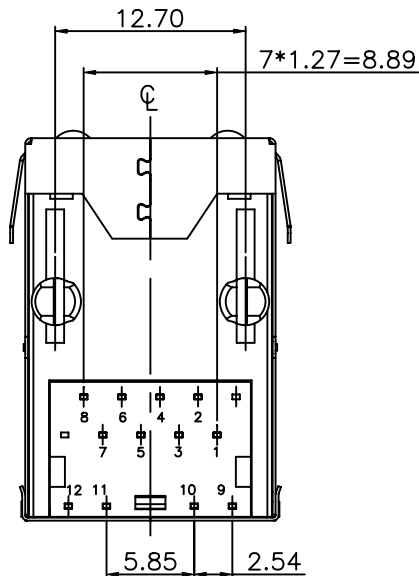
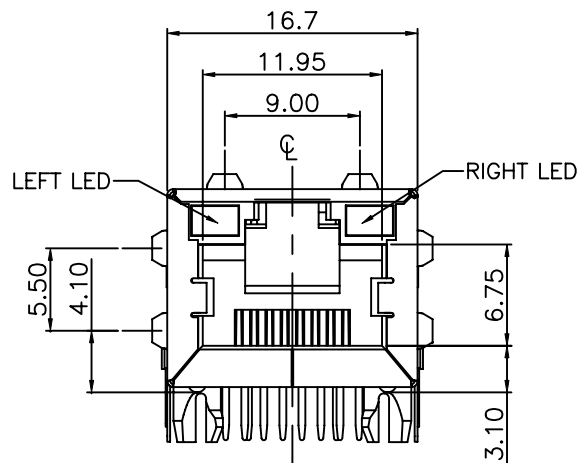




PRODUCT NO.  
10084428-X00LF/X02LF



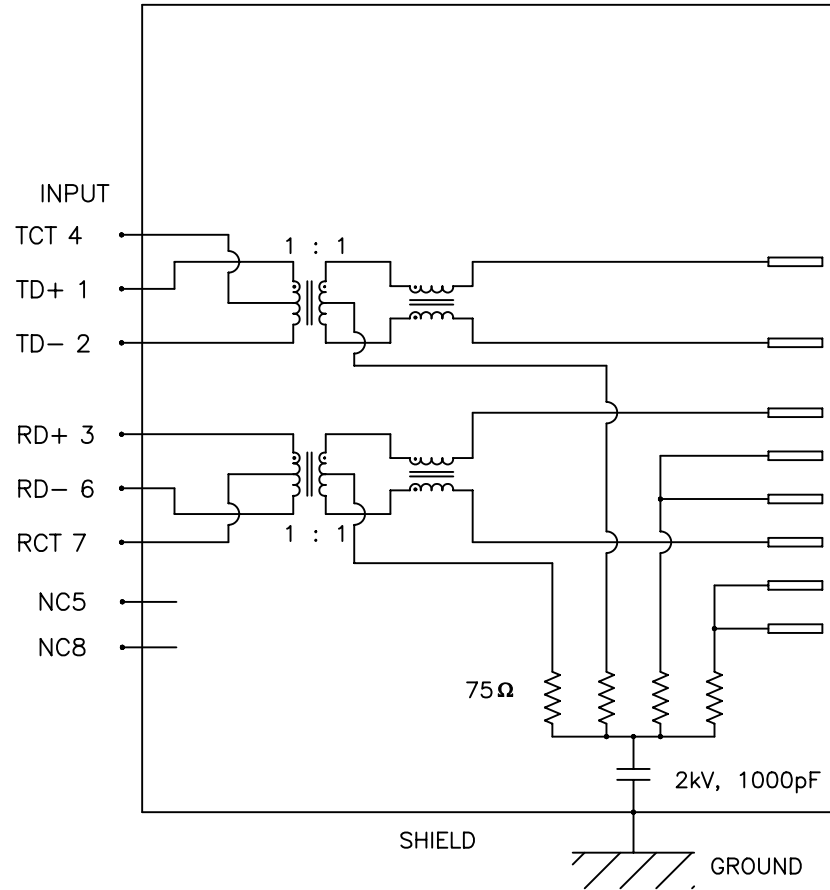
mat'l. code				tolerances unless otherwise specified			CUSTOMER COPY		FCI	
ltr	ecn no	dr	date	linear	.X ± 0.30		projection		title	www.fciconnect.com
B	T08-1002	WL	01/03/08		.XX ± 0.20				RJ45 1x1 W/LED/SPRING	
C	T08-1052	WL	04/30/08		.XXX ± 0.10				TAB UP, TRANSFORMER 10/100	
D	T08-1172	WL	10/07/08	angles	0° ± 2°					
E	T09-1014	WL	02/17/09	dr	WENDY CHEN	11/26/07	MM		product family	JACK SERIES
F	T09-1022	WL	02/26/09	enr	WENDY CHEN	11/26/07			size	dwg no
G	T09-1130	WL	10/05/09	chr	WENDY CHEN	11/26/07	scale		A4	10084428
H	T09-1137	WL	10/22/09	appd	ALEX LIANG	11/26/07			code	TWN
sheet	revision	H	H	H	H	H			sheet	1 of 6
index	sheet	1	2	3	4	5	6			





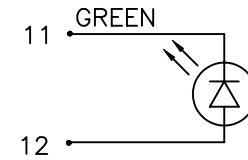
PRODUCT NO.  
10084428-X00LF/X02LF

ELECTRIC SCHEME

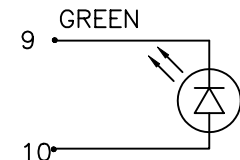


RJ45

OUTPUT

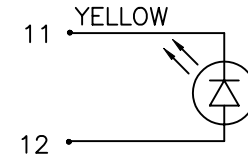


LEFT LED

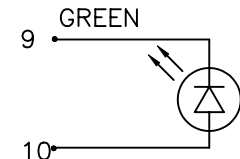


RIGHT LED

10084428-X00LF



LEFT LED



RIGHT LED

10084428-X02LF

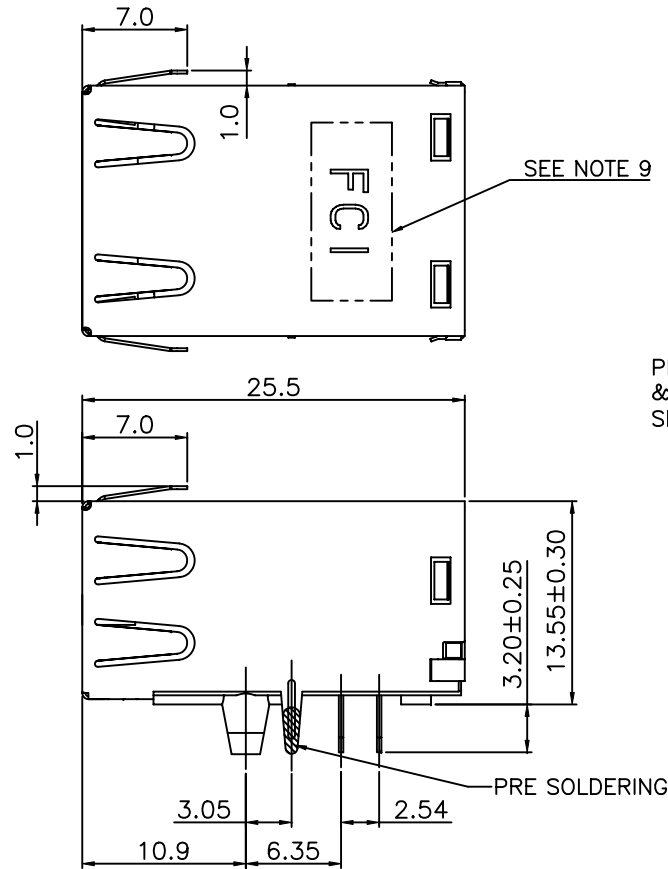
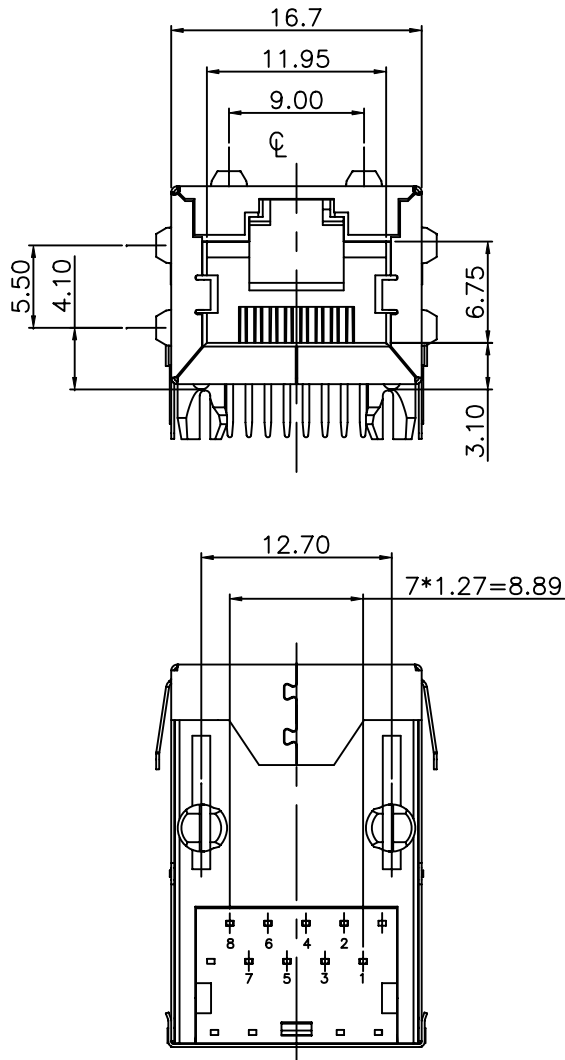
Transmitter & Receiver Filter:

1. Insertion Loss (dB MAX)  
1~100MHz -1.0
2. Return Loss at 100Ω(dB MIN)  
1~30MHz -18  
30~60MHz -16  
60~80MHz -12
3. Common Mode Rejection@ 1~100 MHz: -30dB MIN
4. Cross Talk@1~100 MHz: -35dB MIN
5. Inductance@100KHz/ 0.1V, 8mA DC BIAS: 350uH MIN
6. HiPot Test: 1500Vrms(or 2250VDC), 60sec
7. LED: Forward Voltage (V)@ 20mA  
Typica :2.2 / MAX :2.6

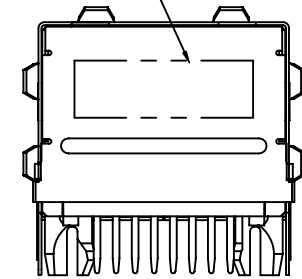
mat'l. code				tolerances unless otherwise specified		CUSTOMER COPY		FCI	
ltr	ecn no	dr	date	linear	.X ± 0.30	projection		title RJ45 1x1 W/LED/SPRING TAB UP, TRANSFORMER 10/100	
H					.XX ± 0.20				
					.XXX ± 0.10				
				angles	0° ±2°	MM		product family JACK SERIES size dwg no 10084428	
				dr	WENDY CHEN 11/26/07				
				enrg	WENDY CHEN 11/26/07				
				chr	WENDY CHEN 11/26/07	scale	A4	code TWN sheet 3 of	
				appd	ALEX LIANG 11/26/07				
sheet index	revision sheet								

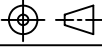


PRODUCT NO.  
10084428-X01LF



PRINT FCI P/N  
& DATE CODE  
SEE NOTE 10



mat'l. code				tolerances unless otherwise specified		CUSTOMER COPY	FCI	
ltr	ecn no	dr	date	linear	.X ± 0.30		www.fciconnect.com	
H					.XX ± 0.20		title RJ45 1x1 WITHOUT LED TAB UP, TRANSFORMER 10/100	
					.XXX ± 0.10			
				angles	0° ±2°	 MM scale	product family JACK SERIES	
				dr	WENDY CHEN 02/17/09		code TWN	
				enr	WENDY CHEN 02/17/09		size dwg no	
				chr	WENDY CHEN 02/17/09		A4	
				appd	ALEX LIANG 02/17/09		10084428	
sheet index	revision sheet							

Tous droits strictement reserves. Reproduction ou communication a des tiers interdite sous quelque forme que ce soit sans autorisation écrite du propriétaire. Property of FCI. Copyright FCI.

All rights strictly reserved. Reproduction or issue to third parties in any form whatever is not permitted without written authority from the proprietor. Property of FCI. Copyright FCI.



PRODUCT NO.  
10084428-X01LF

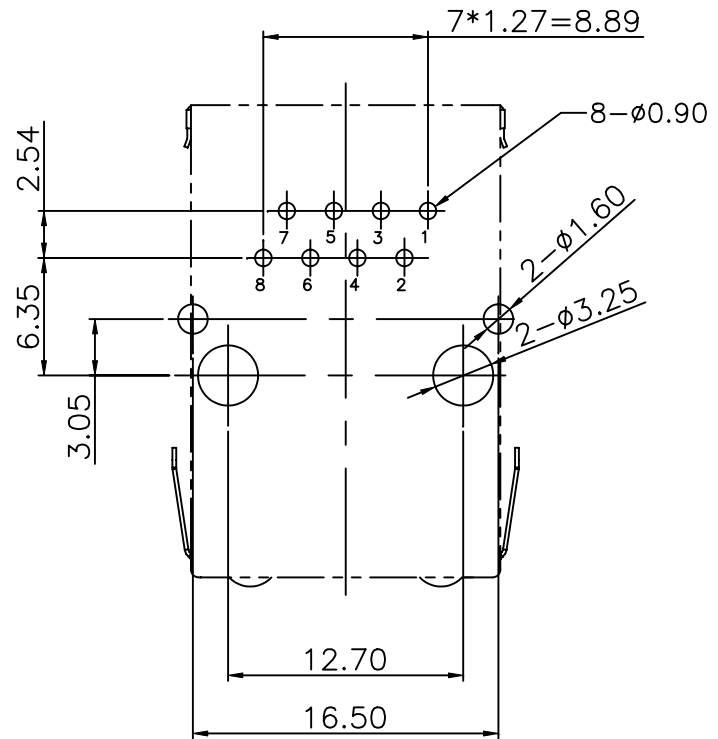
NOTES:

- MATERIALS :  
SHELL : STAINLESS STEEL, T=0.20mm  
HOUSING: HIGH THERMOPLASTIC, UL 94V-0  
RJ CONTACT : COPPER ALLOY, T=0.25mm  
MODULE: HIGH THERMOPLASTIC, UL 94V-0  
INPUT PIN: COPPER ALLOY
- FINISH :  
RJ CONTACT : 50u" MIN. NICKEL UNDER PLATED OVER ALL.  
100u" MIN. MATTE TIN ON SOLDERING AREA.  
SELECTIVE GOLD PLATED ON CONTACT AREA.  
INPUT PIN: TIN COATED COPPER ALLOY  
SHELL : PRE-SOLDERING ON SHELL GROUNDING LEG
- MECHANICAL CHARACTERISTICS :  
INSERTION FORCE : 22N MAX.  
REMOVAL FORCE(WITHOUT PLUG LOCK) : 22N MAX.  
DURABILITY : 1000 TIMES
- OPERATING TEMPERATURE : 0°C ~ 70°C
- PRODUCT PERFORMANCE PER SPEC. : GS-12-518.
- PACKING SPEC. : GS-14-1242.
- THIS PRODUCT MEETS THE EUROPEAN UNION DIRECTIVE AS DESCRIBED IN GS-22-008.
- THE HOUSING WILL WITHSTAND EXPOSURE TO 265°C PEAK TEMPERATURE FOR 5 SECONDS IN A WAVE SOLDER APPLICATION WITH A CIRCUIT BOARD.
- "FCI" LOGO IS STAMPED ON THIS AREA.
- "DATE CODE" DESCRIPTION:  
XX XX  
WEEK  
YEAR (EX.: 08--2008)
- PART NUMBER DESCRIPTION:  
10084428-X X X LF

LED COLOR CODE:  
1 :WITHOUT LED

TRANSFORMER SPEED :  
0: 10/100 BASE-T

RJ CONTACT AREA PLATING:  
1 : 15u" GOLD



RECOMMENDED PCB LAYOUT (COMPONENT SIDE)  
ALL DIMENSION TOLERANCE ARE ±0.05mm

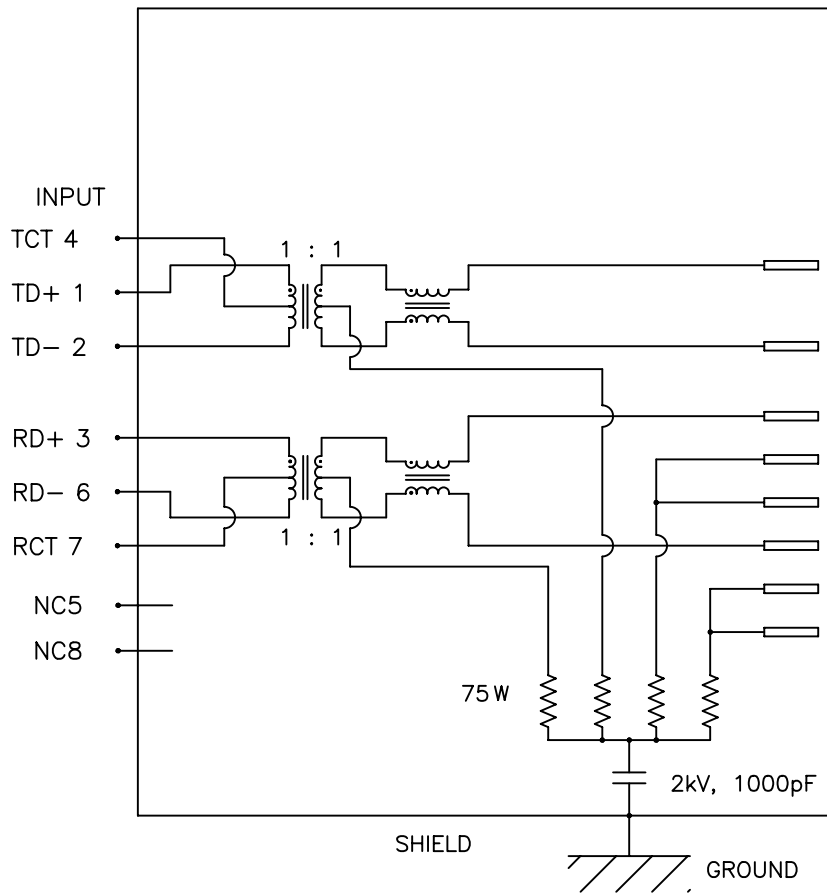
mat'l. code				tolerances unless otherwise specified		CUSTOMER COPY		FCI	
ltr	ecn no	dr	date	linear	.X ± 0.30	projection		title RJ45 1x1 WITHOUT LED TAB UP, TRANSFORMER 10/100	
H					.XX ± 0.20				
					.XXX ± 0.10				
				angles	0° ±2°	MM		product family JACK SERIES	
				dr	WENDY CHEN 02/17/09				
				enrg	WENDY CHEN 02/17/09				
				chr	WENDY CHEN 02/17/09	scale	A4	code TWN	
				appd	ALEX LIANG 02/17/09				
sheet index	revision sheet							size dwg no 10084428	
								sheet 5 of	



PRODUCT NO.

10084428-X01LF

ELECTRIC SCHEME



RJ45

OUTPUT

RJ 1 TX+

RJ 2 TX-

RJ 3 RX+

RJ 4

RJ 5

RJ 6 RX-

RJ 7

RJ 8

Transmitter & Receiver Filter:

1. Insertion Loss (dB MAX)  
1~100MHz -1.0
2. Return Loss at 100W(dB MIN)  
1~30MHz -18  
30~60MHz -16  
60~80MHz -12
3. Common Mode Rejection@ 1~100 MHz: -30dB MIN
4. Cross Talk@1~100 MHz: -35dB MIN
5. Inductance@100KHz/ 0.1V, 8mA DC BIAS: 350uH MIN
6. HiPot Test: 1500Vrms(or 2250VDC), 60sec

mat'l. code				tolerances unless otherwise specified		CUSTOMER COPY		FCI	
ltr	ecn no	dr	date	linear	.X ± 0.30	projection		title RJ45 1x1 WITHOUT LED TAB UP, TRANSFORMER 10/100	
H					.XX ± 0.20				
					.XXX ± 0.10				
				angles	0° ± 2°	MM		product family JACK SERIES size dwg no	
				dr	WENDY CHEN 02/17/09				
				enr	WENDY CHEN 02/17/09				
				chr	WENDY CHEN 02/17/09	scale	A4	10084428	
				appd	ALEX LIANG 02/17/09				
sheet	revision								
index	sheet								