



SAW Components

Data Sheet K 9363 D





SAW Components

K 9363 D

IF Filter for Audio Applications

38,90 MHz

Data Sheet

Standard

- B/G
- D/K
- I
- L

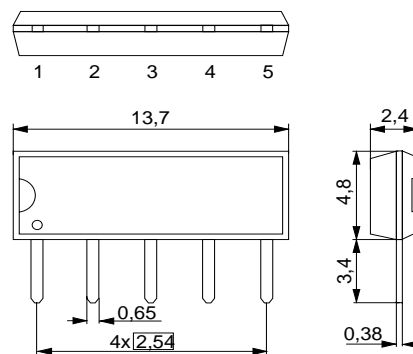
Duroplast package **SIP5D**

Features

- TV IF audio filter with pass band for sound carriers at 32,40 MHz (D/K, L), 32,90 MHz (I) and 33,40 MHz (B/G)
- Standard IC package

Terminals

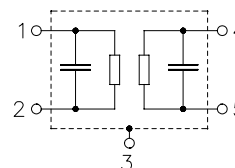
- Tinned CuFe alloy



Dimensions in mm, approx. weight 0,5 g

Pin configuration

- | | |
|---|-----------------------|
| 1 | Input |
| 2 | Input - ground |
| 3 | Chip carrier - ground |
| 4 | Output |
| 5 | Output |



Type	Ordering code	Marking and package according to	Packing according to
K 9363 D	B39389-K9363-N201	C61157-A1-A21	F61074-V8049-Z000

Maximum ratings

Operable temperature range	T_A	-25/+65	°C	
Storage temperature range	T_{stg}	-40/+85	°C	
DC voltage	V_{DC}	5	V	between any terminals
AC voltage	V_{pp}	10	V	between any terminals



SAW Components

K 9363 D

IF Filter for Audio Applications

38,90 MHz

Data Sheet

Characteristics

Reference temperature:

$$T_A = 25\text{ °C}$$

Terminating source impedance:

$$Z_S = 50\ \Omega$$

Terminating load impedance:

$$Z_L = 2\text{ k}\Omega \parallel 3\text{ pF}$$

			min.	typ.	max.	
Insertion attenuation α						
Reference level for the following data	32,90 MHz		8,9	10,4	11,9	dB
Relative attenuation α_{rel}						
Sound carrier	33,40 MHz		0,0	1,0	2,0	dB
	32,40 MHz		0,1	1,1	2,1	dB
	33,05 MHz		-0,9	0,1	1,1	dB
Picture carrier	38,90 MHz		42,0	61,0	—	dB
Color carrier	34,47 MHz		23,0	33,0	—	dB
Adjacent picture carrier	30,90 MHz		40,0	57,0	—	dB
	31,90 MHz		—	6,1	—	dB
Adjacent sound carrier	40,40 MHz		42,0	54,0	—	dB
	40,90 MHz		42,0	52,0	—	dB
	41,40 MHz		42,0	51,0	—	dB
Lower sidelobe	25,00 ... 30,90 MHz		34,0	40,0	—	dB
Upper sidelobe	38,90 ... 45,00 MHz		37,0	45,0	—	dB
Impedance at 32,90 MHz						
Input: $Z_{IN} = R_{IN} \parallel C_{IN}$			—	0,8 11,9	—	k Ω pF
Output: $Z_{OUT} = R_{OUT} \parallel C_{OUT}$			—	3,0 3,5	—	k Ω pF
Temperature coefficient of frequency TC_f			—	-72	—	ppm/K



SAW Components

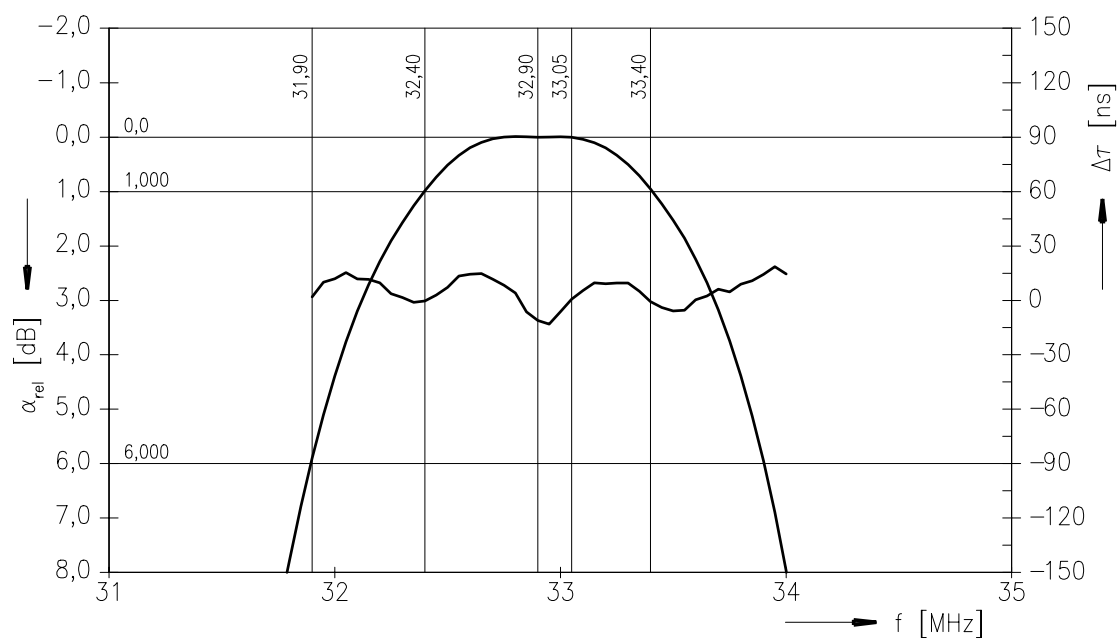
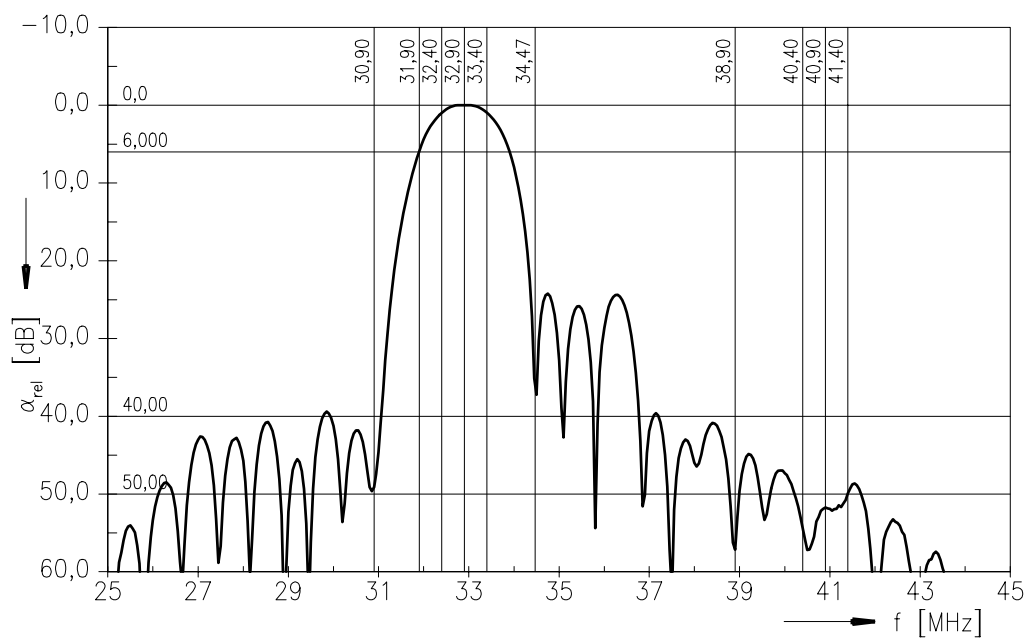
K 9363 D

IF Filter for Audio Applications

38,90 MHz

Data Sheet

Frequency response





SAW Components	K 9363 D
IF Filter for Audio Applications	38,90 MHz
Data Sheet	

Published by EPCOS AG

Surface Acoustic Wave Components Division, SAW CE MM PD

P.O. Box 80 17 09, 81617 Munich, GERMANY

© EPCOS AG 2005. Reproduction, publication and dissemination of this brochure and the information contained therein without EPCOS' prior express consent is prohibited.

Purchase orders are subject to the General Conditions for the Supply of Products and Services of the Electrical and Electronics Industry recommended by the ZVEI (German Electrical and Electronic Manufacturers' Association), unless otherwise agreed.

This brochure replaces the previous edition.

For questions on technology, prices and delivery please contact the Sales Offices of EPCOS AG or the international Representatives.

Due to technical requirements components may contain dangerous substances. For information on the type in question please also contact one of our Sales Offices.