

EDAL

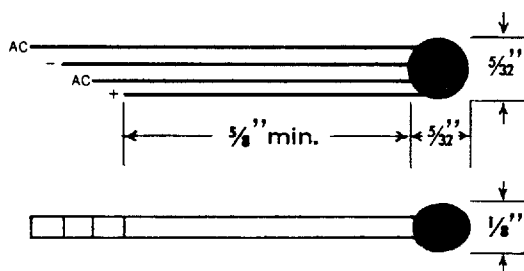
SERIES

P

MINIATURE SILICON RECTIFIER CIRCUITS

The smallest silicon rectifier bridge for its rating is now available from Edal. This miniature design offers many optional configurations in one standard module. A sharp reduction in space requirements, simplified purchasing, reduced inventory, fewer lead connections and faster assembly by eliminating the need of soldering many diodes to achieve equivalent circuitry are substantial advantages. Low unit cost and increased reliability are proven results of Edal miniature circuits, now available in full wave, half wave, doubler, center tap and open bridge types.

Ratings for the single phase bridge circuit highlighted below point out the high temperature capabilities, low leakage current and low forward voltage drop. The cold case design, pure silver leads and a thorough quality control program result in high unit reliability.



ELECTRICAL RATINGS FOR SINGLE PHASE BRIDGE CIRCUIT

Maximum Allowable DC Output Current:

at 50°C ambient temperature, 600 mA
at 100°C ambient temperature, 400 mA

Maximum Allowable One Cycle

Surge Current: 30 amps

Maximum Peak Recurrent Forward

Current: 5 amps

Maximum Full Load Forward Voltage Drop

(Peak at 50°C) Res. Load: 2 volts

Maximum Reverse Current

(100°C full cycle average) 0.5 mA

CODE	CURRENT (mA)	CODE	PIV (VOLTS)	CODE	CIRCUIT
1	50	A	25	1	half wave
2	100	B	50	2	center tap, positive
3	200	C	75	3	center tap, negative
4	300	D	100	4	doubler
5	400	E	150	5	single phase bridge
6	500	F	200	6	open bridge, positive
7	600	G	300	7	open bridge, negative
		H	400		
		K	500		
		M	600		

P 1 B 5

First code represents series, second current, third PIV, fourth circuit. Series P 2 D 5, for example, is 100 mA, 100 PIV, single phase bridge.

EDAL INDUSTRIES, INC.
4 SHORT BEACH ROAD • EAST HAVEN, CONN. 06512

Area Code 203 467-2591