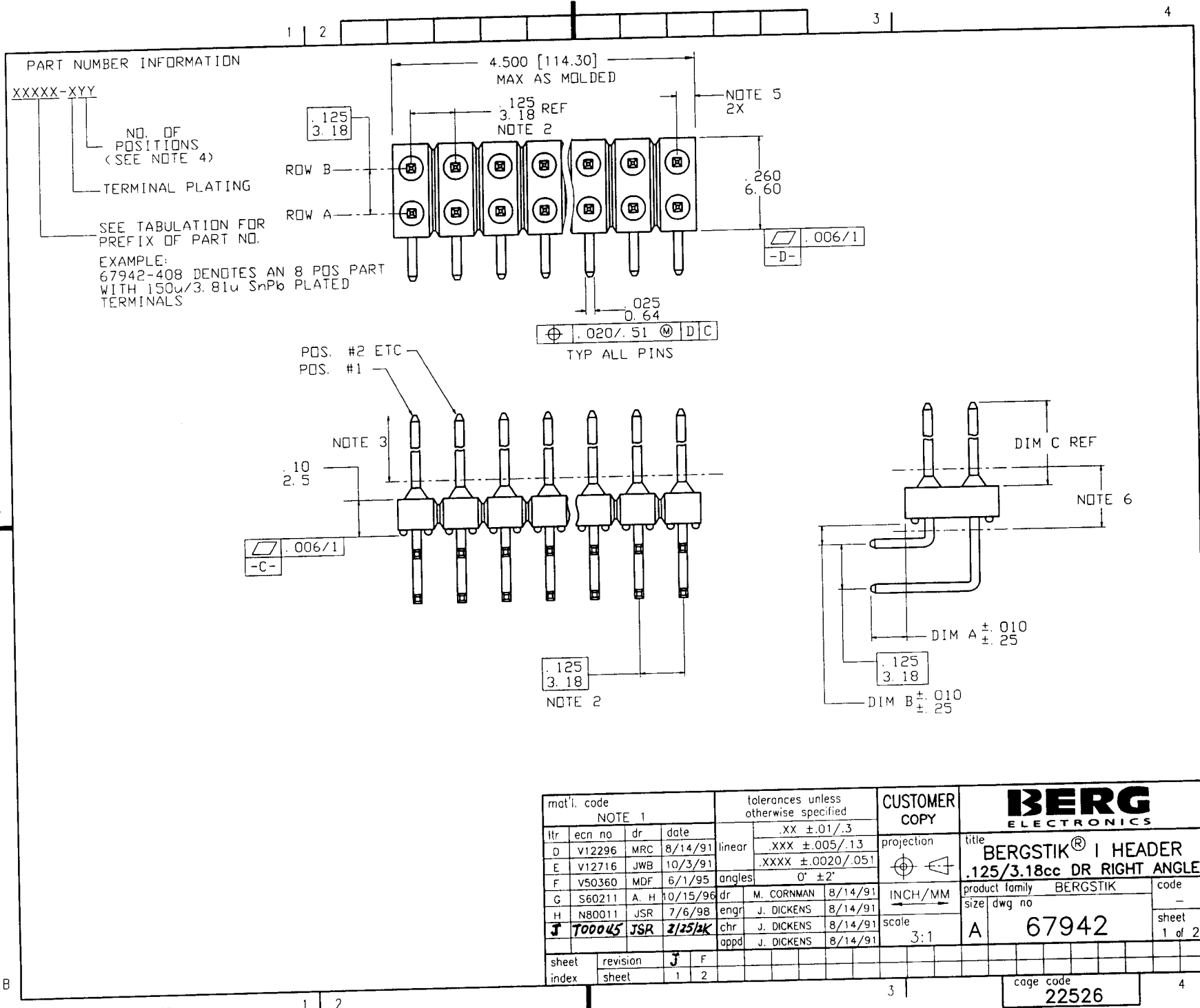
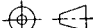


Tous droits strictement réservés. Reproduction ou communication à des tiers interdite sous quelque forme que ce soit sans autorisation écrite du propriétaire. Propriété de © BERG ELECTRONICS. Droits de reproduction BERG ELECTRONICS INC.

All rights strictly reserved. Reproduction or issue to third parties in any form whatever is not permitted without written authority from the proprietor. Property of © BERG ELECTRONICS. Copyright BERG ELECTRONICS INC.



mat'l. code				tolerances unless otherwise specified		CUSTOMER COPY		<b>BERG</b> ELECTRONICS			
NOTE 1						COPY					
ltr	ecn no	dr	date	linear	.XX ±.01/.3		projection 	title BERGSTIK® I HEADER .125/3.18cc DR RIGHT ANGLE			
D	V12296	MRC	8/14/91		.XXX ±.005/.13						
E	V12716	JWB	10/3/91		.XXXX ±.0020/.051						
F	V50360	MDF	6/1/95	angles	0° ±2°		INCH/MM	product family BERGSTIK			
G	S60211	A. H	10/15/96	dr	M. CORNMAN	8/14/91					
H	N80011	JSR	7/6/98	engr	J. DICKENS	8/14/91					
J	T00045	JSR	2/25/98	chr	J. DICKENS	8/14/91	scale 3:1	size dwg no A 67942			
				appd	J. DICKENS	8/14/91					
sheet	revision	J	F								
index	sheet	1	2								
						3		cage code 22526			
								4			

PRODUCT NUMBER	DIM A	DIM B	DIM C
67942-XY	.130/3.30	.060/1.52	.230/5.84
68469-XY	NOT AVAILABLE		
68687-XY	.130/3.30	.060/1.52	.280/7.11
91275-XY	.110/2.79	.060/1.52	.393/9.98
91572-XY	NOT AVAILABLE		

PLATING VARIATIONS					
-XY	PLATING NO.	OVERPLATING	UNDERPLATING	PLASTIC COLOR	TERMINAL MATERIAL
-1YY	1	30u"/.76u Au	50u"/1.27 Ni	BLACK	3/4 HD. PHDS. BRZ.
-2YY	2	15u"/.38u Au	50u"/1.27 Ni	CREAM	3/4 HD. PHDS. BRZ.
-3YY	3	50u"/1.27 Au	50u"/1.27 Ni	BROWN	3/4 HD. PHDS. BRZ.
-4YY	4	150u"/3.81u 93/7 SnPb	-	BLACK	3/4 HD. PHDS. BRZ.

NOTES:

- ① MOLDING MATERIAL: 20% GLASS FILLED NYLON  
RATED PER UL 94 V-0.
- ② MEASURED AT DATUM -C- WITH PART IN  
RESTRAINED CONDITION.
- ③ 5 LBS / 2.3 KG TERMINAL PUSH-OUT FORCE  
IN EITHER DIRECTION.
- ④ MIN NO. OF POSITIONS - 2.  
MAX NO. OF POSITIONS - 72.
- ⑤ .06/1.5 MAX AS MOLDED (MOLDED AS 36 POS  
ONLY) .085/2.16 MAX WHEN BROKEN TO  
SPECIFIED LENGTHS.
- ⑥ .05/1.27 MAX FLASH ALLOWED IN THESE AREAS.
7. TWO SIDES OF LEAD-IN ON PINS NOT PLATED.  
TYP BOTH ENDS.
- ⑧ RECESSED AREA MAY APPEAR WHERE INDICATED  
ON PDS. 1, 8, 15, 22, 29 & 36. (BOTH ENDS).

mat'l. code				tolerances unless otherwise specified		CUSTOMER COPY	<b>BERG</b> ELECTRONICS	
ltr	ecn no	dr	date	linear	.XX ±.01/X ±.3	projection	title	
F					.XXX ±.005/XX ±.13		BERGSTIK® I HEADER	
				angles	XXXX ±.0020/XXX ±.051		.125/3.18cc DR RIGHT ANGLE	
				dr	M. CORNMANN 8/14/91	INCH/MM	product family	code
				enr	J. DICKENS 8/14/91	scale	BERGSTIK	-
				chr	J. DICKENS 8/14/91		size dwg no	sheet
				appd	J. DICKENS 8/14/91	1:1	A 67942	2 of 2
sheet index	revision sheet							