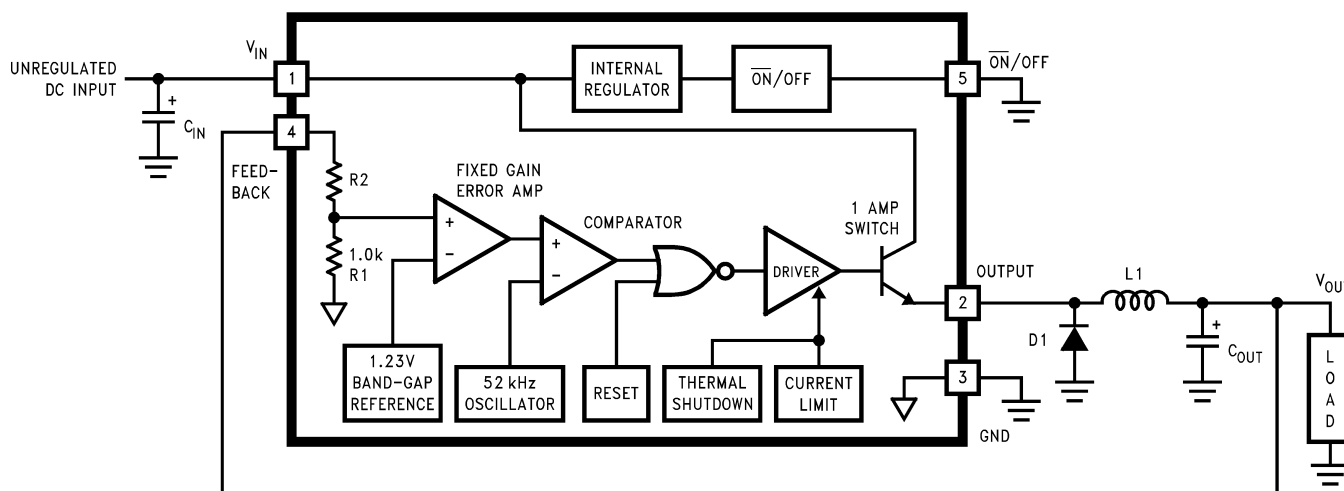


Block Diagram and Typical Application



3.3V, $R2 = 1.7k$

5V, $R2 = 3.1k$

12V, $R2 = 8.84k$

15V, $R2 = 11.3k$

For ADJ. Version

$R1 = \text{Open}$, $R2 = 0\Omega$

Pin numbers are for the TO-220 package.

Figure 1.

