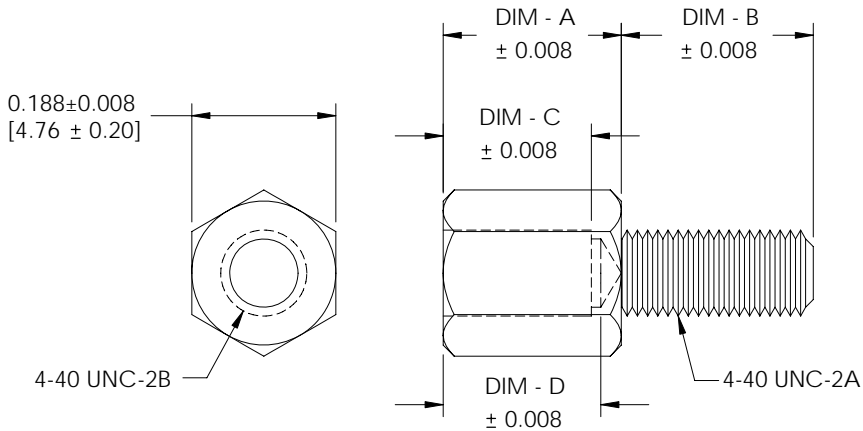


THE INFORMATION CONTAINED IN THIS DRAWING IS THE SOLE PROPERTY OF L-COM, INC. ANY REPRODUCTION IN PART OR WHOLE WITHOUT THE WRITTEN PERMISSION OF L-COM, INC. IS PROHIBITED.

TABLE - A

P/N	DIM - A	DIM - B	DIM - C	DIM - D
SDG250	.232 [5.89]	.250 [6.35]	.193 [4.90]	.205 [5.21]
SDG300	.232 [5.89]	.300 [7.62]	.193 [4.90]	.205 [5.21]
SDG400	.232 [5.89]	.400 [10.16]	.193 [4.90]	.205 [5.21]
SDG400S	.197 [5.00]	.400 [10.16]	.154 [3.91]	.166 [4.22]
SDG400XS	.160 [4.06]	.400 [10.16]	.094 [2.39]	.128 [3.25]
SDG450XS	.160 [4.06]	.450 [11.43]	.094 [2.39]	.128 [3.25]
SDG500	.232 [5.89]	.500 [12.70]	.193 [4.90]	.205 [5.21]



JACK-SCREW

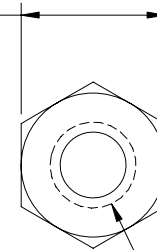
NOTE:

MATERIAL:
JACKSCREW: BRASS
HEX NUT: BRASS
LOCK WASHER: STEEL

FINISH:
JACKSCREW: NICKEL PLATED
HEX NUT: NICKEL PLATED
LOCK WASHER: NICKEL PLATED

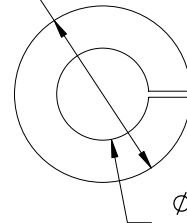
MISCELLANEOUS:
PACKAGING: SEAL 50 JACK-SCREWS, 50 LOCK-WASHERS, AND 50 HEX NUTS INTO AN L-COM LOGO BAG.

0.188±0.008
[4.76 ± 0.20]



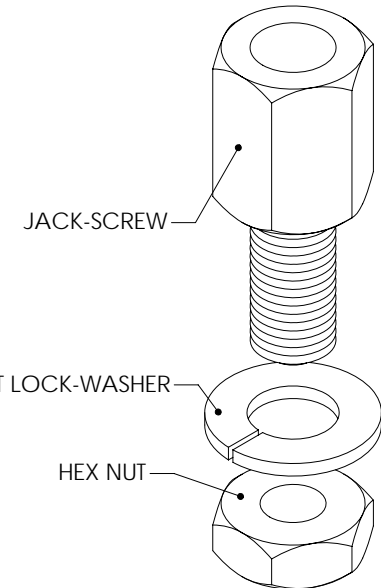
HEX NUT

Ø0.23 ± 0.01
[5.84 ± 0.25]



LOCK WASHER

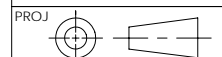
0.08 ± 0.01
[2.03 ± 0.25]



OUTLINE DRAWING

L-com CONNECTIVITY PRODUCTS		45 BEECHWOOD DRIVE NORTH ANDOVER, MA 01845	
CATEGORY		D-SUBMINIATURE	
PRODUCT DESCRIPTION		SDG 4-40 HEX JACK-SCREW KIT	
SIZE	FSCM NO.	DWG. NO.	REV.
A	43321	SDG250-OD1	E
SCALE: NONE		SHEET 1 OF 1	

DIMENSIONS ARE IN INCHES [mm]
UNLESS OTHERWISE SPECIFIED,
TOLERANCES TO BE:
.X ± .1 [2.5] ANGLES ±2°
.XX ± .05 [1.3]
.XXX ± .005 [0.13]
OVERALL CABLE LENGTH TOL:
≤ 60 [1524] +3 [76.2] / - 0
> 60 [1524] +5% / -0%



APPROVALS
DRAWN BY
B.MAZEJKA
CHECKED BY
D.PARHAM
APPROVED BY
R.CARRICK



DATE		DATE	
02/12/2004		02/18/2004	
02/18/2004		02/18/2004	
02/18/2004		02/18/2004	
02/18/2004		02/18/2004	

CONFIGURATION DETAILS OF
UNDIMENSIONED FEATURES
MAY VARY