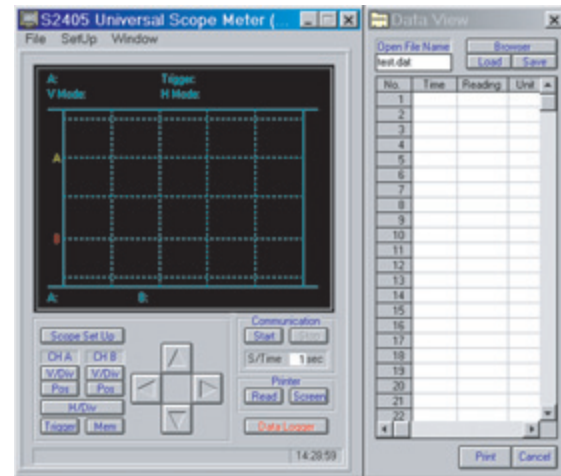




S2405

- Dual Channel
- 50MS/s sampling rate
- 50mV/Div Vertical sensitivity
- Auto ranging Vertical and Horizontal scales
- Built-in auto/manual ranging, True RMS, 4000 count DMM
- DC to 5MHz bandwidths
- Hand held and battery operated
- Designed to UL3111, CSA C22.2 No 1010 standards
- RS-232 Port and supplied software
- User-friendly front panel



■ SPECIFICATIONS

Vertical (Oscilloscope)

Bandwidth: 5MHz
Resolution: 8 bits
Number of Channels: 2
Coupling: AC and DC
Input Impedance: 1M Ω
Accuracy: $\pm 3\%$
Max. Input Volts: 600V DC or AC RMS
Vertical Sensitivity: 50mV/Div to 500V/Div in a 1-2-5 sequences

Horizontal (Oscilloscope)

Sample Rate:
50MS/s single channel
25MS/s dual channel
Record Length:
512 bytes single shot and Glitch capture
256 bytes all other modes
Samples/Div: 25 samples
Update Rate: Real time
Modes: Single shot, roll mode, normal
Accuracy: $\pm 0.01\%$
Sweep Rate: 1 μ s/Div to 5s/Div in a 1-2-5 sequences
Memory: 16 waveforms and setups may be saved in memory

Triggering (Oscilloscope)

Trigger source: CH A, CH B, External
Coupling: AC, DC
Trigger sensitivity: 2/20 Division
Trigger Modes: Auto and Normal
Slope: Positive and Negative

DC Volts

(Digital Multimeter)
Ranges: 5V, 50V, 500V, 1000V
Best Resolution: 1mV
Accuracy: $\pm(0.3\% + 3d)$
Input Impedance: 1M Ω

AC Volts

Ranges: 3V, 30V, 300V, 750V
Best Resolution: 1mV
Accuracy:
 $\pm(0.75\% + 5d)$ 40Hz to 450Hz
 $\pm(2\% + 5d)$ 450Hz to 5KHz
 $\pm(2.5\% + 5d)$ 5KHz to 20KHz
Input Impedance: 1M Ω
Max. Input Volts: 600V DC or AC RMS

Ohms

Ranges: 5K Ω , 50K Ω , 500K Ω , 5M Ω
Best Resolution: 1 Ω
Accuracy: $\pm(0.5\% + 5d)$
Overload Voltage: 600V DC or AC peak

Continuity

Test Voltage: 1.7V
Threshold: 100 digits
Overload Voltage: 600V DC or AC peak

Frequency

Ranges: 100Hz, 1KHz, 10KHz, 100KHz, 1MHz, 10MHz
Best Resolution: 0.01Hz
Accuracy: $\pm(0.05\% + 5d)$
Overload Voltage: 600V DC or AC peak

RPM

Range: 240 to 60,000 RPM
Resolution: 1 RPM
Accuracy: $\pm(0.05\% + 5d)$

Pulse Width

Range: 2 μ s to 500Ms (pulse width > 2 μ s)

Duty Cycle

Range: 25% to 75%

General Specifications

Power:
4.8V NiMH battery pack
120V to 9V @ 1A DC adapter
Battery Life:
4 hours without backlight
3 hours with backlight on
Display: 132 x 128 Pixel super twist LCD
Size: 7.5" H x 3.5" W 1.57" D
Weight: 1.5 lbs
Standard Accessories: Manual, Carrying case, Test leads, Holster, RS-232 cable, Software, AC/DC charger

Mouser Electronics

Authorized Distributor

Click to View Pricing, Inventory, Delivery & Lifecycle Information:

[Protek:](#)

[S2405](#)