



Micropower, Single-Supply, Rail-to-Rail, Precision Instrumentation Amplifiers

General Description

The MAX4194 is a variable-gain precision instrumentation amplifier that combines Rail-to-Rail® single-supply operation, outstanding precision specifications, and a high gain bandwidth. This amplifier is also offered in three fixed-gain versions: the MAX4195 ($G = +1V/V$), the MAX4196 ($G = +10V/V$), and the MAX4197 ($G = +100V/V$). The fixed-gain instrumentation amplifiers feature a shutdown function that reduces the quiescent current to $8\mu A$. A traditional three operational amplifier configuration is used to achieve maximum DC precision.

The MAX4194–MAX4197 have rail-to-rail outputs and inputs that can swing to 200mV below the negative rail and to within 1.1V of the positive rail. All parts draw only $93\mu A$ and operate from a single +2.7V to +7.5V supply or from dual $\pm 1.35V$ to $\pm 3.75V$ supplies. These amplifiers are offered in 8-pin SO packages and are specified for the extended temperature range ($-40^{\circ}C$ to $+85^{\circ}C$).

See the MAX4198/MAX4199 data sheet for single-supply, precision differential amplifiers.

Applications

Medical Equipment
Thermocouple Amplifier
4–20mA Loop Transmitters
Data-Acquisition Systems
Battery-Powered/Portable Equipment
Transducer Interface
Bridge Amplifier

Features

- ◆ +2.7V Single-Supply Operation
- ◆ Low Power Consumption
 - 93 μA Supply Current
 - 8 μA Shutdown Current (MAX4195/MAX4196/MAX4197)
- ◆ High Common-Mode Rejection: 115dB ($G = +10V/V$)
- ◆ Input Common-Mode Range Extends 200mV Below GND
- ◆ Low 50 μV Input Offset Voltage ($G \geq +100V/V$)
- ◆ Low $\pm 0.01\%$ Gain Error ($G = +1V/V$)
- ◆ 250kHz -3dB Bandwidth ($G = +1V/V$, MAX4194)
- ◆ Rail-to-Rail Outputs

Ordering Information

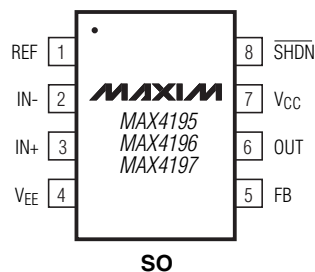
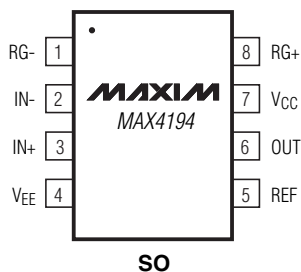
| PART | TEMP RANGE | PIN-PACKAGE |
|------------|----------------------------------|-------------|
| MAX4194ESA | $-40^{\circ}C$ to $+85^{\circ}C$ | 8 SO |
| MAX4195ESA | $-40^{\circ}C$ to $+85^{\circ}C$ | 8 SO |
| MAX4196ESA | $-40^{\circ}C$ to $+85^{\circ}C$ | 8 SO |
| MAX4197ESA | $-40^{\circ}C$ to $+85^{\circ}C$ | 8 SO |

Selector Guide

| PART | SHUTDOWN | GAIN (V/V) | CMRR (dB) |
|---------|----------|------------|--------------------|
| MAX4194 | No | Variable | 95 ($G = +1V/V$) |
| MAX4195 | Yes | +1 | 95 |
| MAX4196 | Yes | +10 | 115 |
| MAX4197 | Yes | +100 | 115 |

Pin Configurations

TOP VIEW



Rail-to-Rail is a registered trademark of Nippon Motorola, Ltd.



Maxim Integrated Products 1

For pricing, delivery, and ordering information, please contact Maxim/Dallas Direct! at 1-888-629-4642, or visit Maxim's website at www.maxim-ic.com.

MAX4194–MAX4197

Micropower, Single-Supply, Rail-to-Rail, Precision Instrumentation Amplifiers

ABSOLUTE MAXIMUM RATINGS

Supply Voltage (V_{CC} to V_{EE}).....+8V
 All Other Pins ($V_{CC} + 0.3V$) to ($V_{EE} - 0.3V$)
 Current into Any Pin $\pm 30mA$
 Output Short-Circuit Duration (to V_{CC} or V_{EE})..... Continuous
 Continuous Power Dissipation ($T_A = +70^\circ C$)
 8-Pin SO (derate 5.9mW/ $^\circ C$ above $+70^\circ C$)..... 471mW

Operating Temperature Range $-40^\circ C$ to $+85^\circ C$
 Junction Temperature $+150^\circ C$
 Storage Temperature Range $-65^\circ C$ to $+150^\circ C$
 Lead Temperature (soldering, 10s) $+300^\circ C$

Stresses beyond those listed under "Absolute Maximum Ratings" may cause permanent damage to the device. These are stress ratings only, and functional operation of the device at these or any other conditions beyond those indicated in the operational sections of the specifications is not implied. Exposure to absolute maximum rating conditions for extended periods may affect device reliability.

ELECTRICAL CHARACTERISTICS

($V_{CC} = +5V$, $V_{EE} = 0V$, $R_L = 25k\Omega$ tied to $V_{CC}/2$, $V_{REF} = V_{CC}/2$, $T_A = T_{MIN}$ to T_{MAX} , unless otherwise noted. Typical values are at $T_A = +25^\circ C$.)

| PARAMETER | SYMBOL | CONDITIONS | | MIN | TYP | MAX | UNITS |
|-------------------------------------|------------|---|---------------|----------------|-----------|----------------|------------------|
| Supply Voltage Range | V_{CC} | Inferred by PSR test | Single supply | 2.7 | | 7.5 | V |
| | | | Dual supplies | ± 1.35 | | ± 3.75 | |
| Quiescent Current | I_{CC} | $V_{IN+} = V_{IN-} = V_{CC}/2$, $V_{DIFF} = 0V$ | | | 93 | 110 | μA |
| Shutdown Current | I_{SHDN} | $I_{SHDN} = V_{IL}$, MAX4195/MAX4196/MAX4197 only | | | 8 | 12 | μA |
| Input Offset Voltage | V_{OS} | $G = +1V/V$, $V_{CM} = V_{CC}/2$, $T_A = +25^\circ C$ | | | ± 100 | ± 450 | μV |
| | | $G = +10V/V$, $V_{CM} = V_{CC}/2$, $T_A = +25^\circ C$ | | | ± 75 | ± 225 | |
| | | $G = +100V/V$, $V_{CM} = V_{CC}/2$, $T_A = +25^\circ C$ | | | ± 50 | ± 225 | |
| | | $G = +1000V/V$, $V_{CM} = V_{CC}/2$, $T_A = +25^\circ C$ | | | ± 50 | | |
| | | $G = +1V/V$, $V_{CM} = V_{CC}/2$, $T_A = T_{MIN}$ to T_{MAX} | | | ± 100 | ± 690 | |
| | | $G = +1V/V$, $V_{CM} = V_{CC}/2$, $T_A = T_{MIN}$ to T_{MAX} | | | ± 75 | ± 345 | |
| | | $G = +100V/V$, $V_{CM} = V_{CC}/2$, $T_A = T_{MIN}$ to T_{MAX} | | | ± 50 | ± 345 | |
| | | $G = +1000V/V$, $V_{CM} = V_{CC}/2$, $T_A = T_{MIN}$ to T_{MAX} | | | ± 50 | | |
| Input Offset Voltage Drift (Note 1) | TC_{VOS} | $G = +1V/V$ | | | ± 1.0 | ± 4.0 | $\mu V/^\circ C$ |
| | | $G \geq +10V/V$ | | | ± 0.5 | ± 2.0 | |
| Input Resistance | R_{IN} | $V_{CM} = V_{CC}/2$ | Differential | | 1000 | | $M\Omega$ |
| | | | Common mode | | 1000 | | |
| Input Capacitance | C_{IN} | $V_{CM} = V_{CC}/2$ | Differential | | 1 | | pF |
| | | | Common mode | | 4 | | |
| Input Voltage Range | V_{IN} | Inferred from CMR test | | $V_{EE} - 0.2$ | | $V_{CC} - 1.1$ | V |
| DC Common-Mode Rejection | CMR_{DC} | $V_{CM} = V_{EE} - 0.2V$ to $V_{CC} - 1.1V$, $T_A = +25^\circ C$, $\Delta R_S = 1k\Omega$ (Note 1) | $G = +1V$ | 66 | 78 | | dB |
| | | | $G = +10V$ | 80 | 94 | | |
| | | | $G = +100V$ | 86 | 99 | | |
| | | $V_{CM} = V_{EE} - 0.2V$ to $V_{CC} - 1.1V$, $T_A = T_{MIN}$ to T_{MAX} , $\Delta R_S = 1k\Omega$, (Note 1) | $G = +1V$ | 60 | 78 | | |
| | | | $G = +10V$ | 74 | 94 | | |
| | | | $G = +100V$ | 77 | 99 | | |

Micropower, Single-Supply, Rail-to-Rail, Precision Instrumentation Amplifiers

MAX4194-MAX4197

ELECTRICAL CHARACTERISTICS (continued)

($V_{CC} = +5V$, $V_{EE} = 0V$, $R_L = 25k\Omega$ tied to $V_{CC}/2$, $V_{REF} = V_{CC}/2$, $T_A = T_{MIN}$ to T_{MAX} , unless otherwise noted. Typical values are at $T_A = +25^\circ C$.)

| PARAMETER | SYMBOL | CONDITIONS | | MIN | TYP | MAX | UNITS |
|----------------------------|---------------------|---|-----------------------|-----|-----------|-----------|-----------------|
| DC Common-Mode Rejection | CMR_{DC} | $V_{CM} = V_{EE} + 0.2V$ to $V_{CC} - 1.1V$, $T_A = +25^\circ C$, $\Delta R_S = 1k\Omega$ | $G = +1V$ | 78 | 95 | | dB |
| | | | $G = +10V$ | 93 | 115 | | |
| | | | $G = +100V/V$ | 95 | 115 | | |
| | | | $G = +1000V/V$ | | 115 | | |
| | | $V_{CM} = V_{EE} + 0.2V$ to $V_{CC} - 1.1V$, $T_A = T_{MIN}$ to T_{MAX} , $\Delta R_S = 1k\Omega$ | $G = +1V$ | 73 | 95 | | |
| | | | $G = +10V$ | 88 | 115 | | |
| | | | $G = +100V/V$ | 90 | 115 | | |
| | | | $G = +1000V/V$ | | 115 | | |
| AC Common-Mode Rejection | CMR_{AC} | $V_{CM} = V_{EE} + 0.2V$ to $V_{CC} - 1.1V$, $f = 120Hz$ | $G = +1V$ | | 85 | | dB |
| | | | $G = +10V$ | | 101 | | |
| | | | $G = +100V$ | | 106 | | |
| Power-Supply Rejection | PSR | $+2.7V \leq V_{CC} \leq +7.5V$; $V_{CM} = +1.5V$; $V_{OUT} = +1.5V$; $V_{REF} = +1.5V$; $R_L = 25k\Omega$ to $+1.5V$; $G = +1V/V$, $+10V/V$, $+100V/V$ | | 90 | 120 | | dB |
| Input Bias Current | I_B | $V_{CM} = V_{CC}/2$ | | | 6 | 20 | nA |
| Input Bias Current Drift | TC_{IB} | $V_{CM} = V_{CC}/2$ | | | 15 | | pA/ $^\circ C$ |
| Input Offset Current | I_{OS} | $V_{CM} = V_{CC}/2$ | | | ± 1.0 | ± 3.0 | nA |
| Input Offset Current Drift | TC_{IOS} | $V_{CM} = V_{CC}/2$ | | | 15 | | pA/ $^\circ C$ |
| Input Noise Voltage | e_n | $G = +1V/V$ | $f = 10Hz$ | | 85 | | nV/ \sqrt{Hz} |
| | | | $f = 100Hz$ | | 75 | | |
| | | | $f = 10kHz$ | | 72 | | |
| | | | $f = 0.1Hz$ to $10Hz$ | | 1.4 | | μV_{RMS} |
| | | $G = +10V/V$ | $f = 10Hz$ | | 35 | | nV/ \sqrt{Hz} |
| | | | $f = 100Hz$ | | 32 | | |
| | | | $f = 10kHz$ | | 31 | | |
| | | | $f = 0.1Hz$ to $10Hz$ | | 0.7 | | μV_{RMS} |
| | | $G = +100V/V$ | $f = 10Hz$ | | 32 | | nV/ \sqrt{Hz} |
| | | | $f = 100Hz$ | | 31 | | |
| | | | $f = 10kHz$ | | 8.7 | | |
| | | | $f = 0.1Hz$ to $10Hz$ | | 0.6 | | μV_{RMS} |
| Input Noise Current | i_n | $f = 10Hz$ | | | 2.4 | | pA/ \sqrt{Hz} |
| | | $f = 100Hz$ | | | 0.76 | | |
| | | $f = 10kHz$ | | | 0.1 | | |
| | | $f = 0.1Hz$ to $10Hz$ | | | 16 | | pA $_{RMS}$ |
| Output Voltage Swing | V_{OH} , V_{OL} | $R_L = 25k\Omega$ to $V_{CC}/2$ | $V_{CC} - V_{OH}$ | | 30 | 100 | mV |
| | | | V_{OL} | | 30 | 100 | |
| | | $R_L = 5k\Omega$ to $V_{CC}/2$ | $V_{CC} - V_{OH}$ | | 100 | 200 | |
| | | | V_{OL} | | 100 | 200 | |

Micropower, Single-Supply, Rail-to-Rail, Precision Instrumentation Amplifiers

ELECTRICAL CHARACTERISTICS (continued)

($V_{CC} = +5V$, $V_{EE} = 0V$, $R_L = 25k\Omega$ tied to $V_{CC}/2$, $V_{REF} = V_{CC}/2$, $T_A = T_{MIN}$ to T_{MAX} , unless otherwise noted. Typical values are at $T_A = +25^\circ C$.)

| PARAMETER | SYMBOL | CONDITIONS | | MIN | TYP | MAX | UNITS |
|--|--------------------------------------|--|----------------------------------|----------------|-------------------------------------|------|------------|
| Short-Circuit Current (Note 2) | I _{SC} | | | | ±4.5 | | mA |
| Gain Equation | | MAX4194 only | | | 1 + (50k Ω /R _G) | | |
| Gain Error | | $T_A = +25^\circ C$, $V_{CM} = V_{CC}/2$, $R_L = 25k\Omega$, $V_{EE} + 0.1V \leq V_{OUT} \leq V_{CC} - 0.1V$ | G = +1V | | ±0.01 | ±0.1 | % |
| | | | G = +10V | | ±0.03 | ±0.3 | |
| | | | G = +100V/V | | ±0.05 | ±0.5 | |
| | | | G = +1000V/V, MAX4194 | | ±0.5 | | |
| | | $T_A = +25^\circ C$, $V_{CM} = V_{CC}/2$, $R_L = 5k\Omega$, $V_{EE} + 0.2V \leq V_{OUT} \leq V_{CC} - 0.2V$ | G = +1V | | ±0.01 | ±0.1 | |
| | | | G = +10V | | ±0.03 | ±0.3 | |
| | | | G = +100V/V | | ±0.05 | ±0.5 | |
| | | | G = +1000V/V, MAX4194 | | ±0.5 | | |
| Gain Temperature Coefficient (Note 1) | | MAX4194/MAX4195, G = +1V/V | | | ±1 | ±8 | ppm/°C |
| | | MAX4196/MAX4197 | | | ±1 | ±15 | |
| 50k Ω Resistance Temperature Coefficient (Note 3) | TC _{50kΩ} | MAX4194 | | | ±16 | | ppm/°C |
| Nonlinearity | | $V_{EE} + 0.1V \leq V_{OUT} \leq V_{CC} - 0.1V$, $V_{CM} = V_{CC}/2$, G = +1V/V, +10V/V, +100V/V, +1000V/V | | | ±0.001 | | % |
| Capacitive-Load Stability | C _L | | | | 300 | | pF |
| -3dB Bandwidth | BW _{-3dB} | $V_{OUT} \leq 0.1V_{P-P}$, $V_{CM} = V_{CC}/2$ | G = +1V/V | MAX4194 | 250 | | kHz |
| | | | | MAX4195 | 220 | | |
| | | | G = +10V/V | MAX4194 | 17 | | |
| | | | | MAX4196 | 34 | | |
| | | | G = +100V/V | MAX4194 | 1.5 | | |
| | | | | MAX4197 | 3.1 | | |
| | | | G = +1000V/V | MAX4194 | 0.147 | | |
| Slew Rate | SR | $V_{OUT} = 2V_{P-P}$, G = +1V/V | | | 0.06 | | V/ μ s |
| Settling Time | t _s | 0.1%, $V_{OUT} = 2V_{P-P}$ | G = +1V/V | | 0.05 | | ms |
| | | | G = +10V/V | | 0.04 | | |
| | | | G = +100V/V | | 5 | | |
| | | | G = +1000V/V | | 7 | | |
| Total Harmonic Distortion | THD | $V_{OUT} = 2V_{P-P}$, G = +1V/V, f = 1kHz | | | 0.001 | | % |
| Input Logic Voltage High | V _{IH} | | | $V_{CC} - 1.5$ | | | V |
| Input Logic Voltage Low | V _{IL} | | | $V_{CC} - 2.5$ | | | V |
| \overline{SHDN} Input Current | | $V_{EE} < V_{SHDN} < V_{CC}$ | MAX4195/MAX4196/ MAX4197 only | | ±0.1 | | μ A |

Micropower, Single-Supply, Rail-to-Rail, Precision Instrumentation Amplifiers

ELECTRICAL CHARACTERISTICS (continued)

($V_{CC} = +5V$, $V_{EE} = 0V$, $R_L = 25k\Omega$ tied to $V_{CC}/2$, $V_{REF} = V_{CC}/2$, $T_A = T_{MIN}$ to T_{MAX} , unless otherwise noted. Typical values are at $T_A = +25^\circ C$.)

| PARAMETER | SYMBOL | CONDITIONS | MIN | TYP | MAX | UNITS |
|---------------------------|--------------|--|-----|-----|-----|-------|
| Time to Shutdown | t_{SHDN} | $G = +1V/V$, 0.1%, $V_{OUT} = +3V$ | | 0.5 | | ms |
| Enable Time From Shutdown | t_{ENABLE} | $G = +1V/V$, 0.1%, $V_{OUT} = +3.5V$ | | 0.5 | | ms |
| Power-Up Delay | | $G = +1V/V$, 0.1%, $V_{OUT} = +3.5V$ | | 1 | | ms |
| On/Off Settling Time | $t_{ON/OFF}$ | $V_{SHDN} = V_{CC} - 2.5V$ to $V_{CC} - 1.5V$, $G = +100V/V$, 0.1%, $V_{OUT} = +3.5V$ | | 0.5 | | ms |

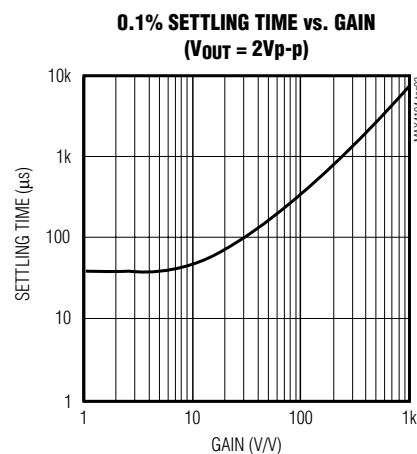
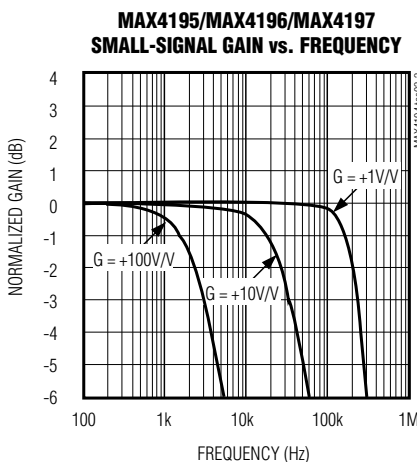
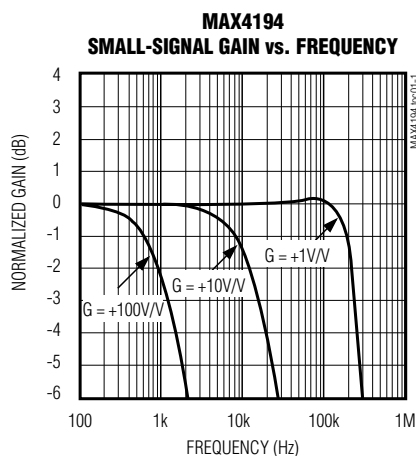
Note 1: Guaranteed by design.

Note 2: Maximum output current (sinking/sourcing) in which the gain changes by less than 0.1%.

Note 3: This specification represents the typical temperature coefficient of an on-chip thin film resistor. In practice, the temperature coefficient of the gain for the MAX4194 will be dominated by the temperature coefficient of the external gain-setting resistor.

Typical Operating Characteristics

($V_{CC} = +5V$, $V_{EE} = 0$, $R_L = 25k\Omega$ tied to $V_{CC}/2$, $T_A = +25^\circ C$, unless otherwise noted.)

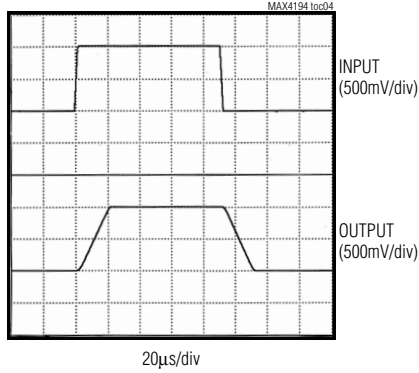


Micropower, Single-Supply, Rail-to-Rail, Precision Instrumentation Amplifiers

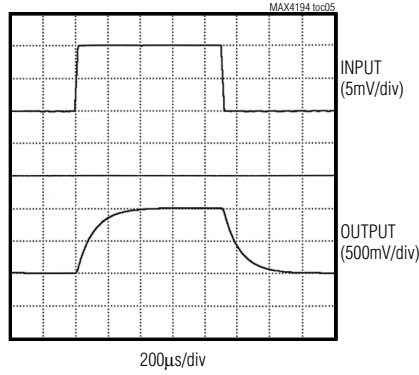
Typical Operating Characteristics (continued)

($V_{CC} = +5V$, $V_{EE} = 0$, $R_L = 25k\Omega$ tied to $V_{CC}/2$, $T_A = +25^\circ C$, unless otherwise noted.)

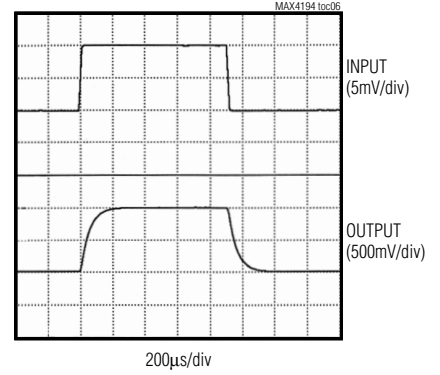
**MAX4194
LARGE-SIGNAL PULSE RESPONSE
(GAIN = +1V/V)**



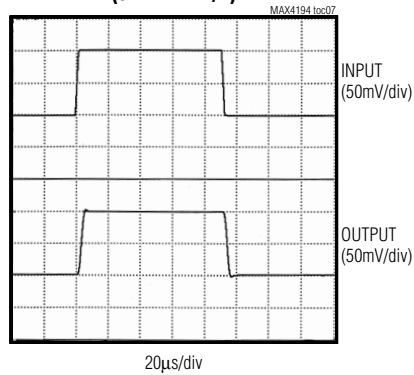
**MAX4194
LARGE-SIGNAL PULSE RESPONSE
(GAIN = +100V/V)**



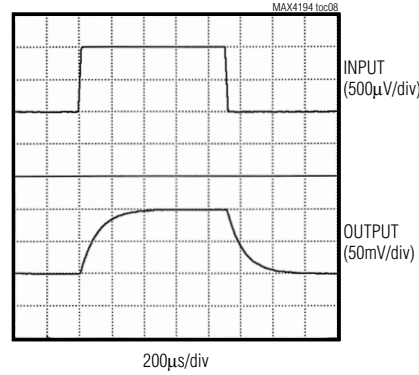
**MAX4197
LARGE-SIGNAL PULSE RESPONSE
(GAIN = +100V/V)**



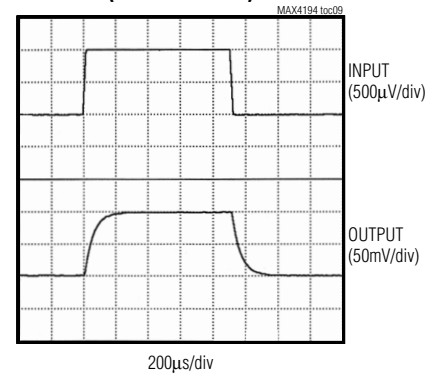
**MAX4194
SMALL-SIGNAL PULSE RESPONSE
(GAIN = +1V/V)**



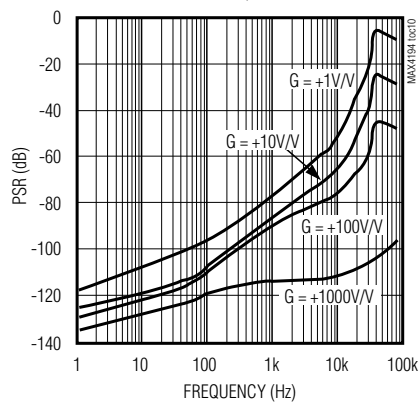
**MAX4194
SMALL-SIGNAL PULSE RESPONSE
(GAIN = +100V/V)**



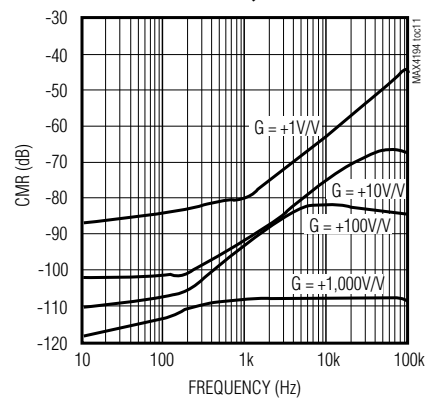
**MAX4197
SMALL-SIGNAL PULSE RESPONSE
(GAIN = +100V/V)**



**POWER-SUPPLY REJECTION
vs. FREQUENCY**



**COMMON-MODE REJECTION
vs. FREQUENCY**

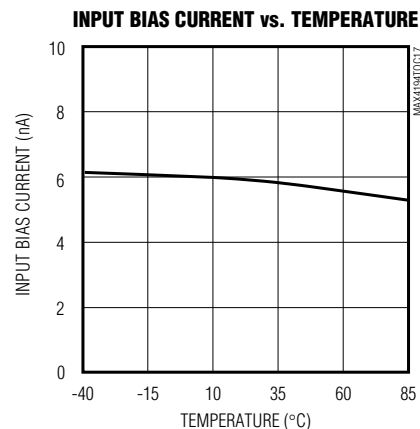
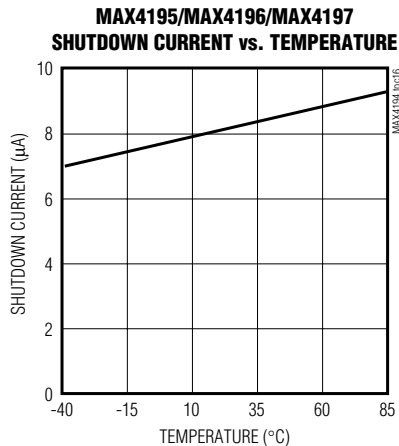
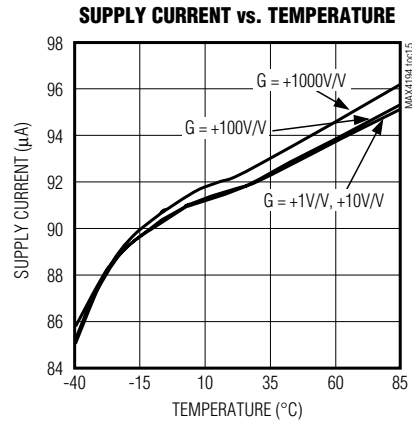
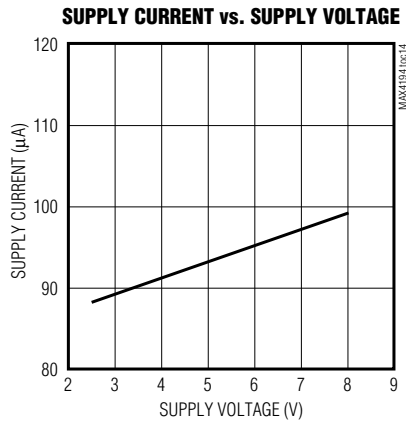
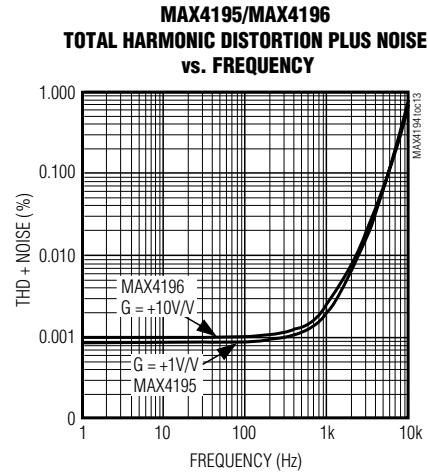
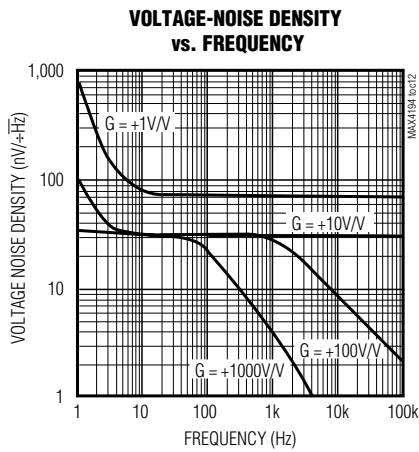


Micropower, Single-Supply, Rail-to-Rail, Precision Instrumentation Amplifiers

Typical Operating Characteristics (continued)

($V_{CC} = +5V$, $V_{EE} = 0$, $R_L = 25k\Omega$ tied to $V_{CC}/2$, $T_A = +25^\circ C$, unless otherwise noted.)

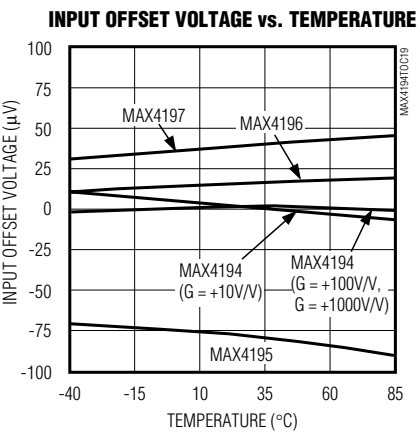
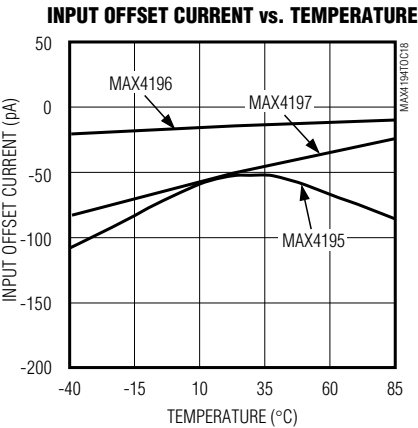
MAX4194-MAX4197



Micropower, Single-Supply, Rail-to-Rail, Precision Instrumentation Amplifiers

Typical Operating Characteristics (continued)

(V_{CC} = +5V, V_{EE} = 0, R_L = 25kΩ tied to V_{CC}/2, T_A = +25°C, unless otherwise noted.)



Pin Description

| PIN | | NAME | FUNCTION |
|---------|-------------------------------|--------------------------|--|
| MAX4194 | MAX4195 MAX4196 MAX4197 | | |
| 1, 8 | — | RG-, RG+ | Connection for Gain-Setting Resistor |
| 5 | 1 | REF | Reference Voltage. Offsets output voltage. |
| 2 | 2 | IN- | Inverting Input |
| 3 | 3 | IN+ | Noninverting Input |
| 4 | 4 | V _{EE} | Negative Supply Voltage |
| — | 5 | FB | Feedback. Connects to OUT. |
| 6 | 6 | OUT | Amplifier Output |
| 7 | 7 | V _{CC} | Positive Supply Voltage |
| — | 8 | $\overline{\text{SHDN}}$ | Shutdown Control |

Micropower, Single-Supply, Rail-to-Rail, Precision Instrumentation Amplifiers

Detailed Description

Input Stage

The MAX4194-MAX4197 family of low-power instrumentation amplifiers implements a three-amplifier topology (Figure 1). The input stage is composed of two operational amplifiers that together provide a fixed-gain differential and a unity common-mode gain. The output stage is a conventional differential amplifier that provides an overall common-mode rejection of 115dB ($G =$

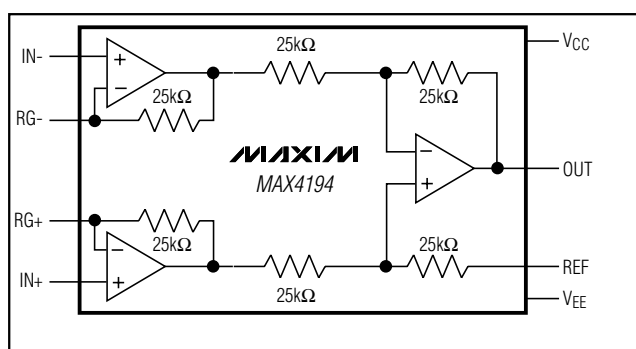


Figure 1. MAX4194 Simplified Block Diagram

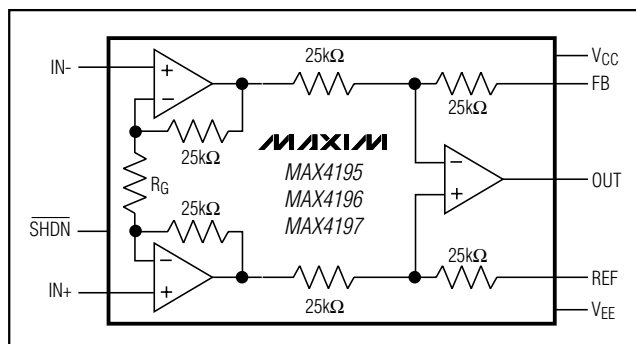


Figure 2. MAX4195/MAX4196/MAX4197 Simplified Block Diagram

+10V/V). The MAX4194's gain can be externally set between +1V/V and +10,000V/V (Table 1). The MAX4195/MAX4196/MAX4197 have on-chip gain-setting resistors (Figure 2), and their gains are fixed at +1V/V, +10V/V, and +100V/V, respectively.

Input Voltage Range and Detailed Operation

The common-mode input range for all of these amplifiers is $V_{EE} - 0.2V$ to $V_{CC} - 1.1V$. Ideally, the instrumentation amplifier (Figure 3) responds only to a differential voltage applied to its inputs, $IN+$ and $IN-$. If both inputs are at the same voltage, the output is V_{REF} . A differential voltage at $IN+$ (V_{IN+}) and $IN-$ (V_{IN-}) develops an identical voltage across the gain-setting resistor, causing a current (I_G) to flow. This current also flows through the feedback resistors of the two input amplifiers A1 and A2, generating a differential voltage of:

$$V_{OUT2} - V_{OUT1} = I_G \cdot (R_1 + R_G + R_1)$$

where V_{OUT1} and V_{OUT2} are the output voltages of A1 and A2, R_G is the gain-setting resistor (internal or external to the part), and R_1 is the feedback resistor of the input amplifiers.

I_G is determined by the following equation:

$$I_G = (V_{IN+} - V_{IN-}) / R_G$$

The output voltage (V_{OUT}) for the instrumentation amplifier is expressed in the following equation:

$$V_{OUT} = (V_{IN+} - V_{IN-}) \cdot [(2 \cdot R_1) / R_G] + 1$$

The common-mode input range is a function of the amplifier's output voltage and the supply voltage. With a power supply of V_{CC} , the largest output signal swing can be obtained with REF tied to $V_{CC}/2$. This results in an output voltage swing of $\pm V_{CC}/2$. An output voltage swing less than full-scale increases the common-mode input range.

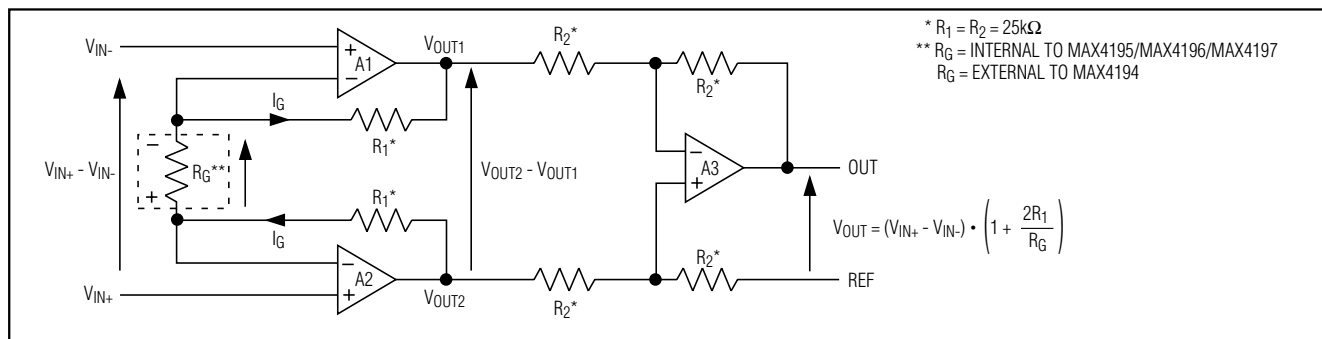


Figure 3. Instrumentation Amplifier Configuration

Micropower, Single-Supply, Rail-to-Rail, Precision Instrumentation Amplifiers

Table 1. MAX4194 External Gain Resistor Selection

| GAIN (V/V) | CLOSEST R _G (1%) (Ω) | CLOSEST R _G (5%) (Ω) |
|------------|---------------------------------|---------------------------------|
| +1 | ∞ * | ∞ * |
| +2 | 49.9k | 51k |
| +5 | 12.4k | 12k |
| +10 | 5.62k | 5.6k |
| +20 | 2.61k | 2.7k |
| +50 | 1.02k | 1.0k |
| +100 | 511 | 510 |
| +200 | 249 | 240 |
| +500 | 100 | 100 |
| +1,000 | 49.9 | 51 |
| +2,000 | 24.9 | 24 |
| +5,000 | 10 | 10 |
| +10,000 | 4.99 | 5.1 |

*Leave pins 1 and 8 open for $G = +1V/V$.

V_{CM} vs. V_{OUT} Characterization

Figure 4 illustrates the MAX4194 typical common-mode input voltage range over output voltage swing at unity-gain (pins 1 and 8 left floating), with a single-supply voltage of $V_{CC} = +5V$ and a bias reference voltage of $V_{REF} = V_{CC}/2 = +2.5V$. Points A and D show the full input voltage range of the input amplifiers ($V_{EE} - 0.2V$ to $V_{CC} - 1.1V$) since, with $+2.5V$ output, there is zero input differential swing. The other points (B, C, E, and F) are determined by the input voltage range of the input amps minus the differential input amplitude necessary to produce the associated V_{OUT} . For the higher gain configurations, the V_{CM} range will increase at the endpoints (B, C, E, and F) since a smaller differential voltage is necessary for the given output voltage.

Rail-to-Rail Output Stage

The MAX4194–MAX4197's output stage incorporates a common-source structure that maximizes the dynamic range of the instrumentation amplifier.

The output can drive up to a $25k\Omega$ (tied to $V_{CC}/2$) resistive load and still typically swing within 30mV of the rails. With an output load of $5k\Omega$ tied to $V_{CC}/2$, the output voltage swings within 100mV of the rails.

Shutdown Mode

The MAX4195–MAX4197 feature a low-power shutdown mode. When the shutdown pin (SHDN) is pulled low, the internal amplifiers are switched off and the supply current drops to $8\mu A$ typically (Figures 5a, 5b, and 5c).

This disables the instrumentation amplifier and puts its output in a high-impedance state. Pulling SHDN high enables the instrumentation amplifier.

Applications Information

Setting the Gain (MAX4194)

The MAX4194's gain is set by connecting a single, external gain resistor between the two RG pins (pin 1 and pin 8), and can be described as:

$$G = 1 + 50k\Omega / R_G$$

where G is the instrumentation amplifier's gain and R_G is the gain-setting resistor.

The $50k\Omega$ resistor of the gain equation is the sum of the two resistors internally connected to the feedback loops of the IN+ and IN- amplifiers. These embedded feedback resistors are laser trimmed, and their accuracy and temperature coefficients are included in the gain and drift specification for the MAX4194.

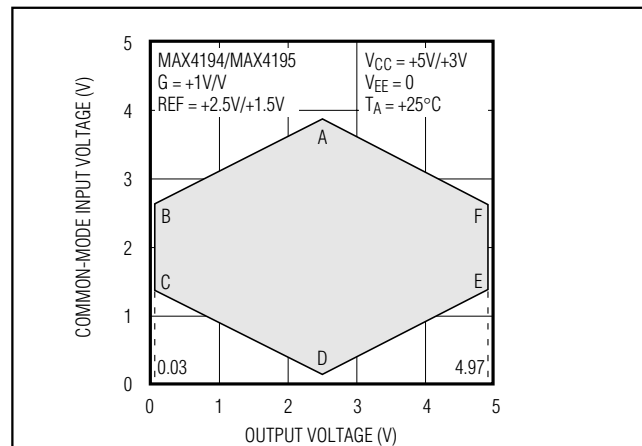


Figure 4. Common-Mode Input Voltage vs. Output Voltage

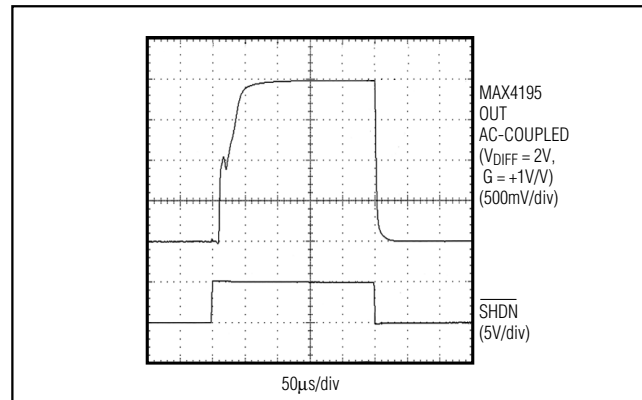


Figure 5a. MAX4195 Shutdown Mode

Micropower, Single-Supply, Rail-to-Rail, Precision Instrumentation Amplifiers

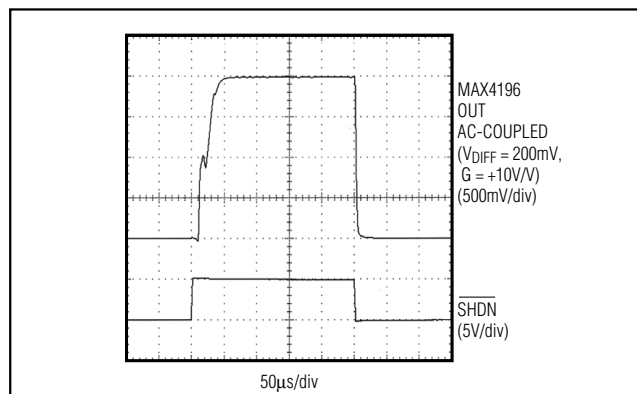


Figure 5b. MAX4196 Shutdown Mode

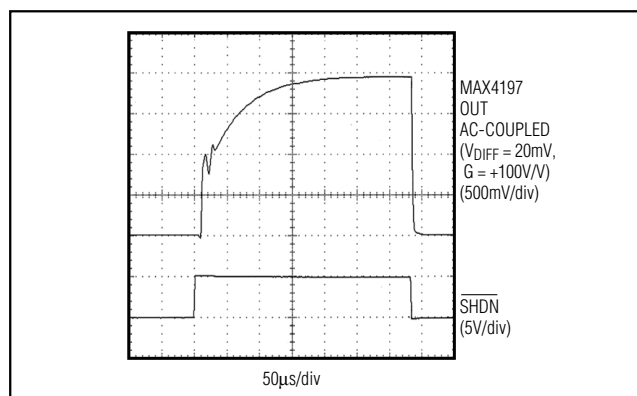


Figure 5c. MAX4197 Shutdown Mode

The accuracy and temperature drift of the R_G resistors also influence the IC's precision and gain drift, and can be derived from the equation above. With low R_G values, which are required for high-gain operation, parasitic resistances may significantly increase the gain error.

Capacitive-Load Stability

The MAX4194-MAX4197 are stable for capacitive loads up to 300pF (Figure 6a). Applications that require greater capacitive-load driving capability can use an isolation resistor (Figure 6b) between the output and the capacitive load to reduce ringing on the output signal. However, this alternative reduces gain accuracy because R_{ISO} (Figure 6c) forms a potential divider with the load resistor.

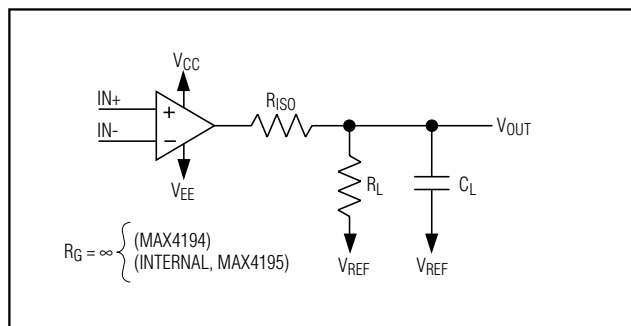


Figure 6a. Using a Resistor to Isolate a Capacitive Load from the Instrumentation Amplifier ($G = +1V/V$)

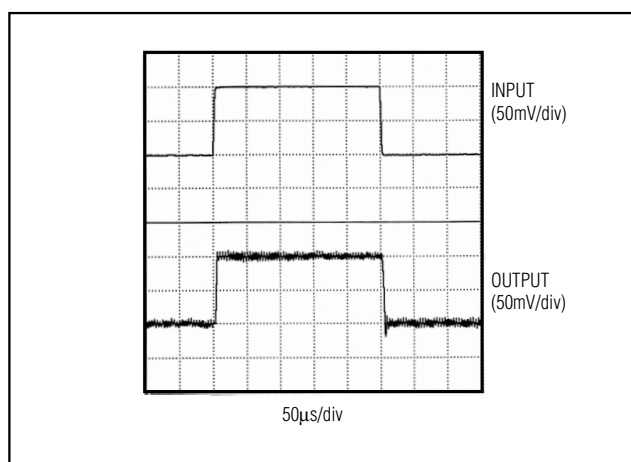


Figure 6b. Small-Signal Pulse Response with Excessive Capacitive Load ($R_L = 25k\Omega$, $C_L = 1000pF$)

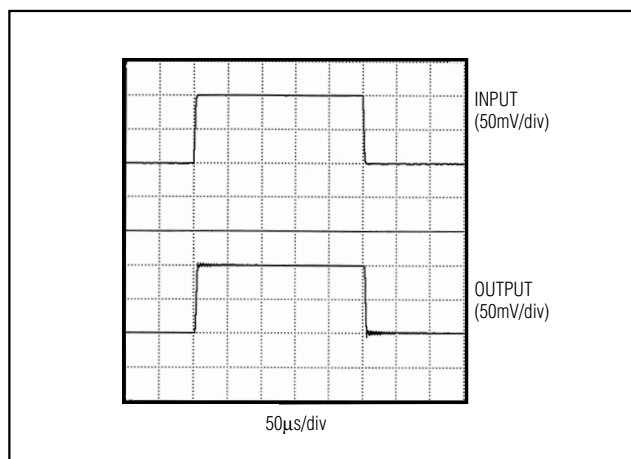


Figure 6c. Small-Signal Pulse Response with Excessive Capacitive Load and Isolating Resistor ($R_{ISO} = 75\Omega$, $R_L = 25k\Omega$, $C_L = 1000pF$)

Micropower, Single-Supply, Rail-to-Rail, Precision Instrumentation Amplifiers

Power-Supply Bypassing and Layout

Good layout technique optimizes performance by decreasing the amount of stray capacitance at the instrumentation amplifier's gain-setting pins. Excess capacitance will produce peaking in the amplifier's frequency response. To decrease stray capacitance, minimize trace lengths by placing external components as close to the instrumentation amplifier as possible. For best performance, bypass each power supply to ground with a separate 0.1µF capacitor.

Transducer Applications

The MAX4194–MAX4197 instrumentation amplifiers can be used in various signal-conditioning circuits for thermocouples, PT100s, strain gauges (displacement sensors), piezoresistive transducers (PRTs), flow sensors, and bioelectrical applications. Figure 7 shows a simplified example of how to attach four strain gauges (two

identical two-element strain gauges) to the inputs of the MAX4194. The bridge contains four resistors, two of which increase and two of which decrease by the same ratio.

With a fully balanced bridge, points A (IN+) and B (IN-) see half the excitation voltage (V_{BRIDGE}). The low impedance (120Ω to 350Ω) of the strain gauges, however, could cause significant voltage drop contributions by the wires leading to the bridge, which would cause excitation variations. Output voltage V_{OUT} can be calculated as follows:

$$V_{\text{OUT}} = V_{\text{AB}} \cdot G$$

where $G = (1 + 50\text{k}\Omega / R_G)$ is the gain of the instrumentation amplifier.

Since V_{AB} is directly proportional to the excitation, gain errors may occur.

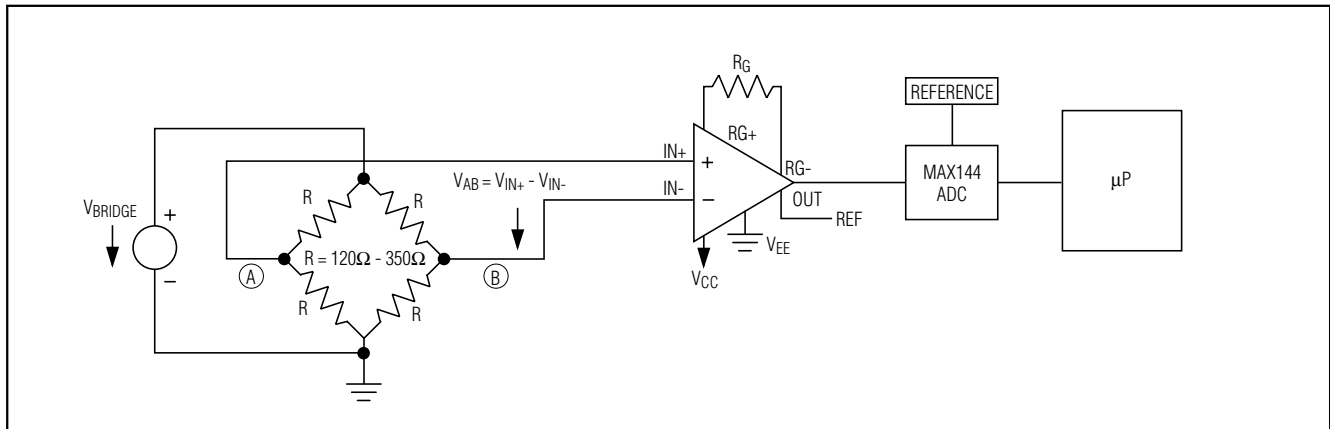


Figure 7. Strain Gauge Connection to the MAX4194

Chip Information

TRANSISTOR COUNT: 432

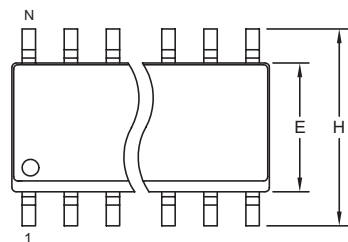
Micropower, Single-Supply, Rail-to-Rail, Precision Instrumentation Amplifiers

Package Information

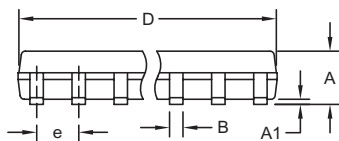
(The package drawing(s) in this data sheet may not reflect the most current specifications. For the latest package outline information, go to www.maxim-ic.com/packages.)

MAX4194-MAX4197

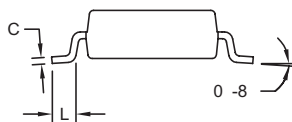
SOICN .EPS



TOP VIEW



FRONT VIEW



SIDE VIEW

| DIM | INCHES | | MILLIMETERS | |
|-----|-----------|-------|-------------|------|
| | MIN | MAX | MIN | MAX |
| A | 0.053 | 0.069 | 1.35 | 1.75 |
| A1 | 0.004 | 0.010 | 0.10 | 0.25 |
| B | 0.014 | 0.019 | 0.35 | 0.49 |
| C | 0.007 | 0.010 | 0.19 | 0.25 |
| e | 0.050 BSC | | 1.27 BSC | |
| E | 0.150 | 0.157 | 3.80 | 4.00 |
| H | 0.228 | 0.244 | 5.80 | 6.20 |
| L | 0.016 | 0.050 | 0.40 | 1.27 |

VARIATIONS:

| DIM | INCHES | | MILLIMETERS | | N | MS012 |
|-----|--------|-------|-------------|-------|----|-------|
| | MIN | MAX | MIN | MAX | | |
| D | 0.189 | 0.197 | 4.80 | 5.00 | 8 | AA |
| D | 0.337 | 0.344 | 8.55 | 8.75 | 14 | AB |
| D | 0.386 | 0.394 | 9.80 | 10.00 | 16 | AC |

NOTES:

1. D&E DO NOT INCLUDE MOLD FLASH.
2. MOLD FLASH OR PROTRUSIONS NOT TO EXCEED 0.15mm (.006").
3. LEADS TO BE COPLANAR WITHIN 0.10mm (.004").
4. CONTROLLING DIMENSION: MILLIMETERS.
5. MEETS JEDEC MS012.
6. N = NUMBER OF PINS.

| | | | |
|--|---------------------------------|---|---------|
|  DALLAS SEMICONDUCTOR | |  | |
| PROPRIETARY INFORMATION | | | |
| TITLE: PACKAGE OUTLINE, .150" SOIC | | | |
| APPROVAL | DOCUMENT CONTROL NO. 21-0041 | REV. B | 1/ 1 |

Maxim cannot assume responsibility for use of any circuitry other than circuitry entirely embodied in a Maxim product. No circuit patent licenses are implied. Maxim reserves the right to change the circuitry and specifications without notice at any time.

13 **Maxim Integrated Products, 120 San Gabriel Drive, Sunnyvale, CA 94086 408-737-7600**

Mouser Electronics

Authorized Distributor

Click to View Pricing, Inventory, Delivery & Lifecycle Information:

Maxim Integrated:

[MAX4194ESA+](#) [MAX4194ESA](#) [MAX4194ESA+T](#) [MAX4195ESA](#) [MAX4195ESA+](#) [MAX4195ESA+T](#) [MAX4196ESA+](#)
[MAX4196ESA+T](#) [MAX4197ESA](#) [MAX4197ESA+](#) [MAX4197ESA+T](#) [MAX4194ESA-G069](#) [MAX4194ESA-T](#)
[MAX4194ESA-TG069](#) [MAX4195ESA-T](#) [MAX4197ESA-T](#)