



## **PTC Thermistors for Telecom**

### **Telecom Pair Protector (TPP)**

**Series/Type:        B598\*\***

Date: November 2003

© EPCOS AG 2003. Reproduction, publication and dissemination of this data sheet, enclosures hereto and the information contained therein without EPCOS' prior express consent is prohibited.

Purchase orders are subject to the General Conditions for the Supply of Products and Services of the Electrical and Electronics Industry recommended by the ZVEI (German Electrical and Electronic Manufacturers' Association), unless otherwise agreed.

## Applications

- Overcurrent protection for line cards

## Features

- Two resistance matched PTCs in a plastic housing
- Compliant with ITU-T K20, K21
  - basic level lightning surges (10/700  $\mu$ s)
  - basic level power induction (600 V, 1 A, 0.2 s)
  - power contact criteria A/B (230 V, 15 min.)
- Suitable for continuous connection to mains voltages of 110/230 VAC in tripped (high ohmic) condition
- For surface mounting onto PCB
- Housing material according to UL94-V0

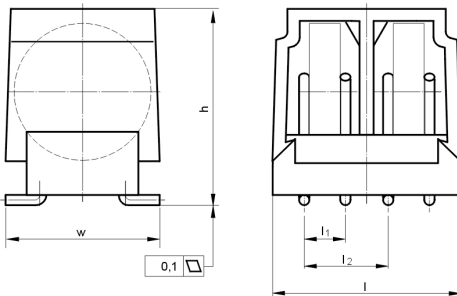
## Options

- Alternative resistances on request

## Delivery mode

- Blister tape

## Dimensional drawing



## Dimensions in mm

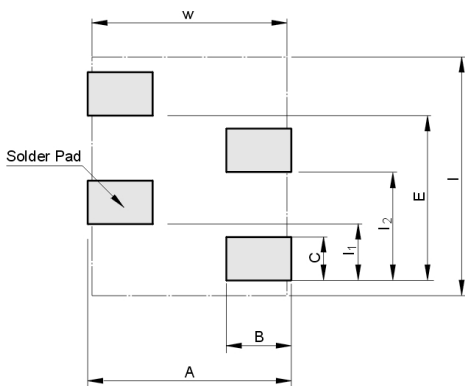
Type	$l_{\max}$	$w_{\max}$	$h_{\max}$	Disk $\varnothing$	$l_1$	$l_2$
T1850	11.0	9.0	11.5	8.0	2.6	5.0
T1835	11.0	9.0	11.5	8.0	2.6	5.0
T1825	11.0	9.0	11.5	8.0	2.6	5.0

**General technical data**

Rated voltage	$V_R$	230	V
Max. switching voltage	$V_{Smax}$	245	V
Tolerance of $R_R$	$\Delta R_R$	$\pm 20$	%
Operating temperature range	$T_{op}$	$-40/+125$	$^{\circ}C$
Resistance matching in one housing	$ R_2 - R_1 $	$< 1.0$	$\Omega$
Insulating test voltage between PTC1 and PTC2	$V_{ins}$	$> 3$	kV

**Electrical specifications**

Type	$R_R$ $\Omega$	$R_{min}$ $\Omega$	$I_R$ ( $T_A = 25^{\circ}C$ ; $V = V_R$ ) $mA_{rms}$	$I_S$ ( $T_A = 25^{\circ}C$ ; $V = V_R$ ) $mA_{rms}$	$I_{Smax}$ ( $V = 245 V$ ) $A_{rms}$	$t_S$ ( $T_A = 25^{\circ}C$ ) s	Ordering code
T1850	50	30	90	190	2.5	$< 0.2$	B59850T1120A062
T1835	35	23	100	200	4.0	$< 0.2$	B59835T1120A062
T1825	25	15	130	260	2.8	$< 0.3$	B59825T1120A062

**Recommended solder pad layout**


Type	Component length "l"	Component width "w"	l1	l2	A	B	C	E
T1850	11.0	9.0	2.6	5.0	10.0	3.2	2.0	7.6
T1835	11.0	9.0	2.6	5.0	10.0	3.2	2.0	7.6
T1825	11.0	9.0	2.6	5.0	10.0	3.2	2.0	7.6