



HAMMOND  
MANUFACTURING®

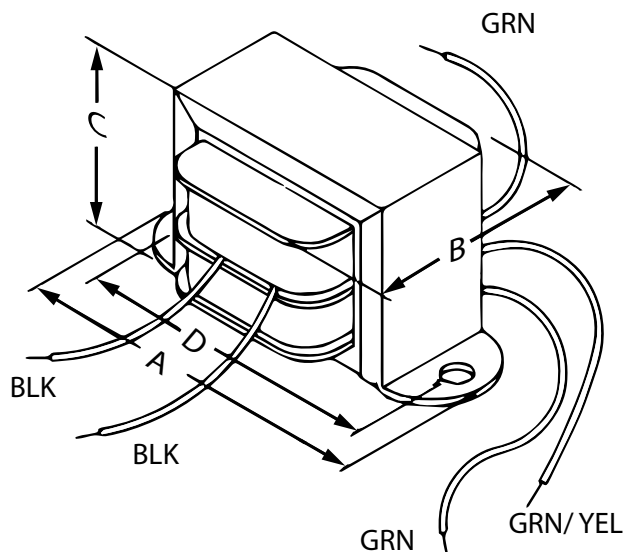
www.hammondmfg.com

# 166D20

Power Transformer - Low Voltage/ Filament  
Economical Single Primary - Open Style Chassis Mount

## Features

- Economical single primary 115 VAC, 60 Hz. (or 117 50/60 Hz. see table below)
- Open style, channel bracket, chassis mount.
- Minimum 6" long leads.
- Dual bobbin design - no electrostatic shield required.
- Class B insulation (130 degrees, C) for extra protection - **UL listed** as a Class A (105 degree, C) design
- Hi-Pot test of 2,000V RMS.
- **CSA certified.**



Overall Dimensions (in. / mm)	
A	2.06 / 52.3
B	1.38 / 35.1
C	1.19 / 30.2
Hole to Hole Mounting Dims	
D	1.75 / 44.5
E	/
Mounting Hole Sizes	
Width-wise	0.187 / 4.7
Depth-wise	/
Electrical	
Size (VA)	2
Primary	115V 60 Hz.
Secondary VAC	20 C.T.
Secondary Amps	0.1

## Schematic

