

**PM20-12D DC-DC Converters**

The PM20 is a DC-DC converter which provides a regulated output at power levels up to 20 watts. It accepts a wide range DC input and provides a fully isolated, regulated output. In operation, either (or neither) input pin, as well as either (or neither) output pin can be grounded. \* PM20 units provide full output power for ambient temperatures up to 60°C, with linear derating from 60°C to zero power at 105°C. In forced air applications, full output power can be maintained as long as the chassis temperature, as measured in the center of the unit's label, is maintained at less than or equal to 100°C.

Note: For safety agency approval of the end use equipment to safety standards (such as UL 1950 3<sup>rd</sup> Edition, CAN/CSA C22.2 No. 950-95, DIN VDE 0805 and EN 60950), the output of the converter is ELV if the input to the converter is ELV; the output of the converter is SELV only if its input is SELV. The input and output are to be both floating or both grounded. The converter is to be protected by the specified fuse, provided in the ungrounded leg.

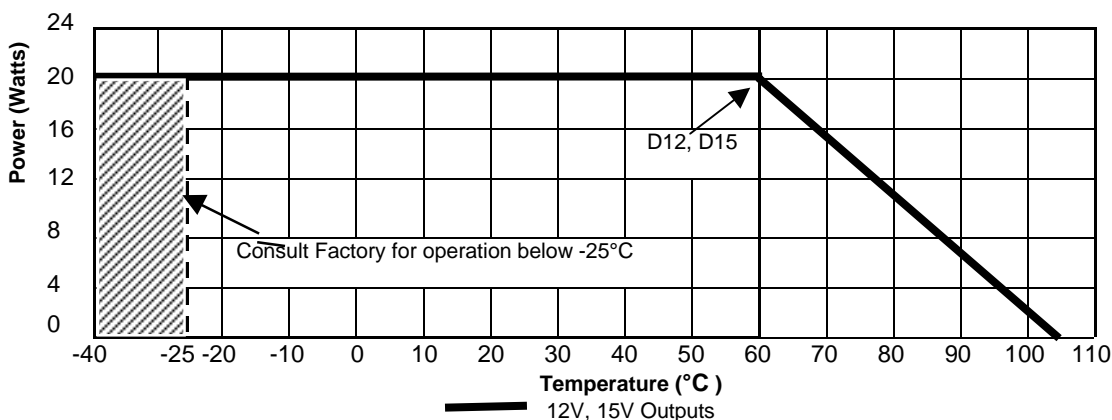
**Specifications:**

ITEM		MODEL	PM20-12D12		PM20-12D15	
			Output 1	Output 2	Output 1	Output 2
Nominal Output Voltage	V		+12	-12	+15	-15
Voltage Accuracy	-	± 1.5%				
Output Current (Power) @ 60°C	A/W		0.083 (10.0)	0.083 (10.0)	0.67 (10.0)	0.67 (10.0)
Operating Temperature	-	-25°C to + 105°C. Derate linearly above + 60°C to 0 watts at 105°C				
Output Voltage Adjustment Range	V	Total o/p adj. Between 21.6 and 26.4		Total o/p adj. Between 27 and 33V		
Output Ripple (20MHz BW)	mV	25mV RMS / 100 mV p-p				
Line Regulation	mV	48 total output, 60 per output		60 total output, 75 per output		
Load Regulation (10% - 100%)	mV	240 total output, 360 total output		300 total output, 450 per output		
Remote Voltage Programming	-	±10% Programming				
Remote On /Off	-	Logic 1 or open enables unit, logic 0 or short shuts unit down. Referenced to -Vin				
Temperature Coefficient	-	± 0.015% / °C				
Overshoot	-	No overshoot at turn on, turn off, power failure or removal of a short circuit				
Input Voltage Range	-	9 – 18 Vdc				
No Load Input Power	W	0.4				
Max. Capacitive Load*	uF	100		120		
Short Circuit Protection	-	Self Protecting into Short Circuit				
Overvoltage Clamp Point (fixed)	V	30 max. (total output)		37.5 max (total output)		
Isolation (Input to Output)	-	500Vac, 700Vdc, 10MΩ				
Regulatory Agency Compliance**	-	ETSI-300-132-2, Bellcore GR-1089, UL1950 3 <sup>rd</sup> Edition, CAN/CSA C22.2 No. 950-95, EN 60950, VDE 0805				
Mounting & Connections	-	0.040" diameter, 0.22" long solderable pins				
Cover	-	0.032" anodized aluminum				
Size (W.H.D.)	in	1.6" x 2.0" x 0.335"				
Storage Temperature	-	-40°C to + 105°C				
Cooling	-	Convection cooling allows full o/p rating. Contact factory for rating w/external forced air				
Vibration	-	2.5G RMS,10Hz – 50 Hz, random vibration, 10 minutes per axis				
Relative Humidity	-	5% - 95%, non-condensing				
Altitude	-	10,000 feet max. operating / 45,000 feet max. storage				
Fungus Proofing	-	Units are inherently fungus inert				
Thermal Cycling	-	1 hour @ -25°C ramped to 1 hour @ +25°C ramped to 1 hour @ +100°C, 10 cycles ramp = 5°C/ minute				
Warranty	-	2 year warranty includes parts and labor				

\* Under full load with low input line voltage.

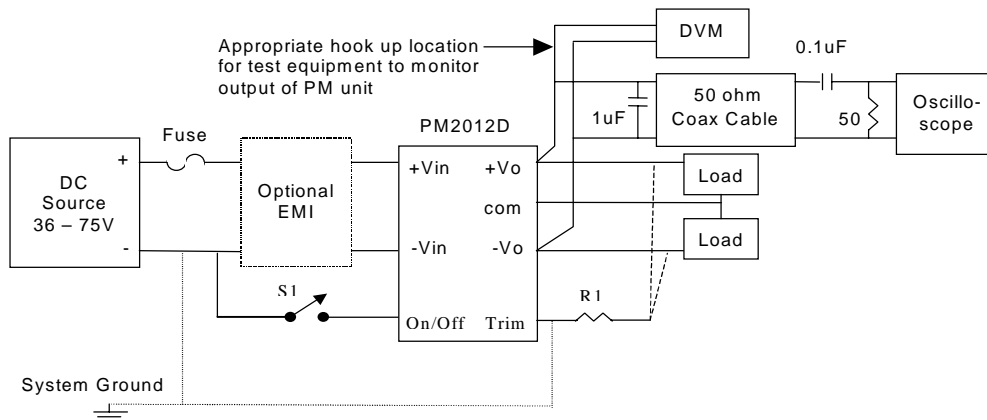
**\*\*Regulatory Agency compliance testing is in process. Check individual unit's label for appropriate agency logos.**

Note: Regulation values pertain to operation with output currents above 10% of rated load current on main output and above 25% of rated output current on auxiliary outputs.

**Total Output Power vs. Ambient Operating Temperature**

## PM20-12D DC-DC Converters

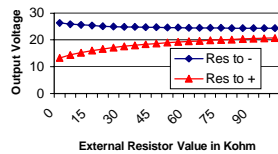
## Recommended Circuit Hook up:



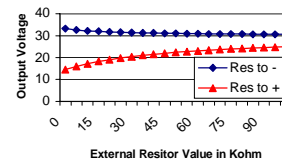
## Notes:

1. Input can have -Vin, +Vin or neither terminal grounded. Input ground connection should be placed as close to PM unit input as possible.
2. Output can have -Vo, +Vo or neither terminal grounded. Output ground connection should be placed as close to PM unit as possible.
3. An optional low impedance capacitor can be added at the input terminals of the PM20 unit to reduce reflected ripple current to the DC source.
4. Recommended input fusing: 5A (Buss PCB 5A, or equivalent).
5. Remote on/off control: low impedance path, or logic 0, referenced to -Vin disables unit output. Open circuit, or logic 1, referenced to -Vin enables output.
6. Output voltage programming: Resistor connected from Pin 8 to either -V or +V will generate increased or decreased output voltages, respectively, as follows.

PM2012D12 Voltage Trim Adjusts the total voltage (+) out to (-) out

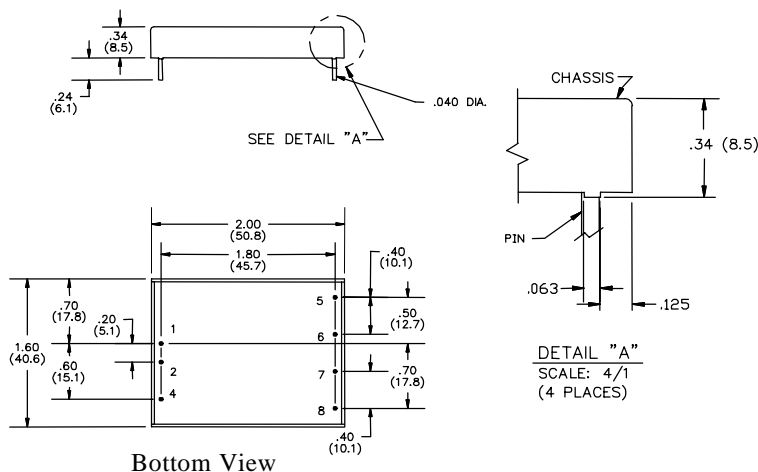


PM2012D15 Voltage Trim Adjusts the total voltage (+) out to (-) out



## Mechanical Information:

PM20 units are designed for installation on printed wiring boards. The chassis has four tabs built in to provide clearance between the unit body and the PCB to allow for wave soldering. During wave soldering, the top surface of the board to which the PM unit is mounted (measured  $\frac{1}{2}$ " from the edge of the PM unit) should be maintained at a temperature of no more than 180°C for no more than 30 seconds. The chassis of the PM unit is electrically isolated from both the input and output circuitry and should be left floating in a typical installation.



CONNECTIONS		
PIN NO.	SINGLE FUNCTION	DUAL FUNCTION
1	+Vin	+Vin
2	-Vin	-Vin
3		
4	ON/OFF	ON/OFF
5		+Vo
6	+Vo	COMMON
7	-Vo	-Vo
8	TRIM	TRIM