

# AV series

Security pushbutton switches •  
Ø 16 mm • latching



## DISTINCTIVE FEATURES

Latching action  
3 terminal types  
Panel sealing option



## ENVIRONMENTAL SPECIFICATIONS

- Optional front panel sealing : IP65 according to IEC 60529
- Operating temperature : -30 °C to +70 °C (-22 °F to +158 °F)



## ELECTRICAL SPECIFICATIONS

- Max. current/voltage rating with resistive load : 1 A 24 VDC
- Initial contact resistance : 50 mΩ max.
- Insulation resistance : 1 GΩ min. at 500 VDC
- Dielectric strength :  
1,500 Vrms 50 Hz min. between terminals  
1,000 Vrms 50 Hz between terminals and frame
- Electrical life : 40,000 cycles



## GENERAL SPECIFICATIONS

- Torque : 5 Nm min. - 14 Nm max. applied to nut
- Panel thickness : 1 (.039) to 6 mm (.236) max.
- Low level or mechanical life : 200,000 cycles
- Hand soldering : 300 °C (572 °F), 5 sec. max.



## MATERIALS

- Case : PA-6T, UL94-V0
- Contacts : silver (A), gold plated silver (AD) on request
- Bushing and actuator : see next page

The company reserves the right to change specifications without notice.

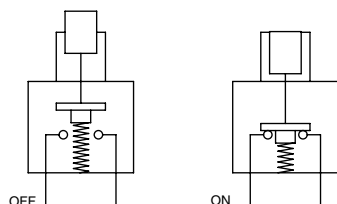


# AV series

Security pushbutton switches •  
Ø 16 mm • latching



## ELECTRICAL FUNCTIONS



## MOUNTING

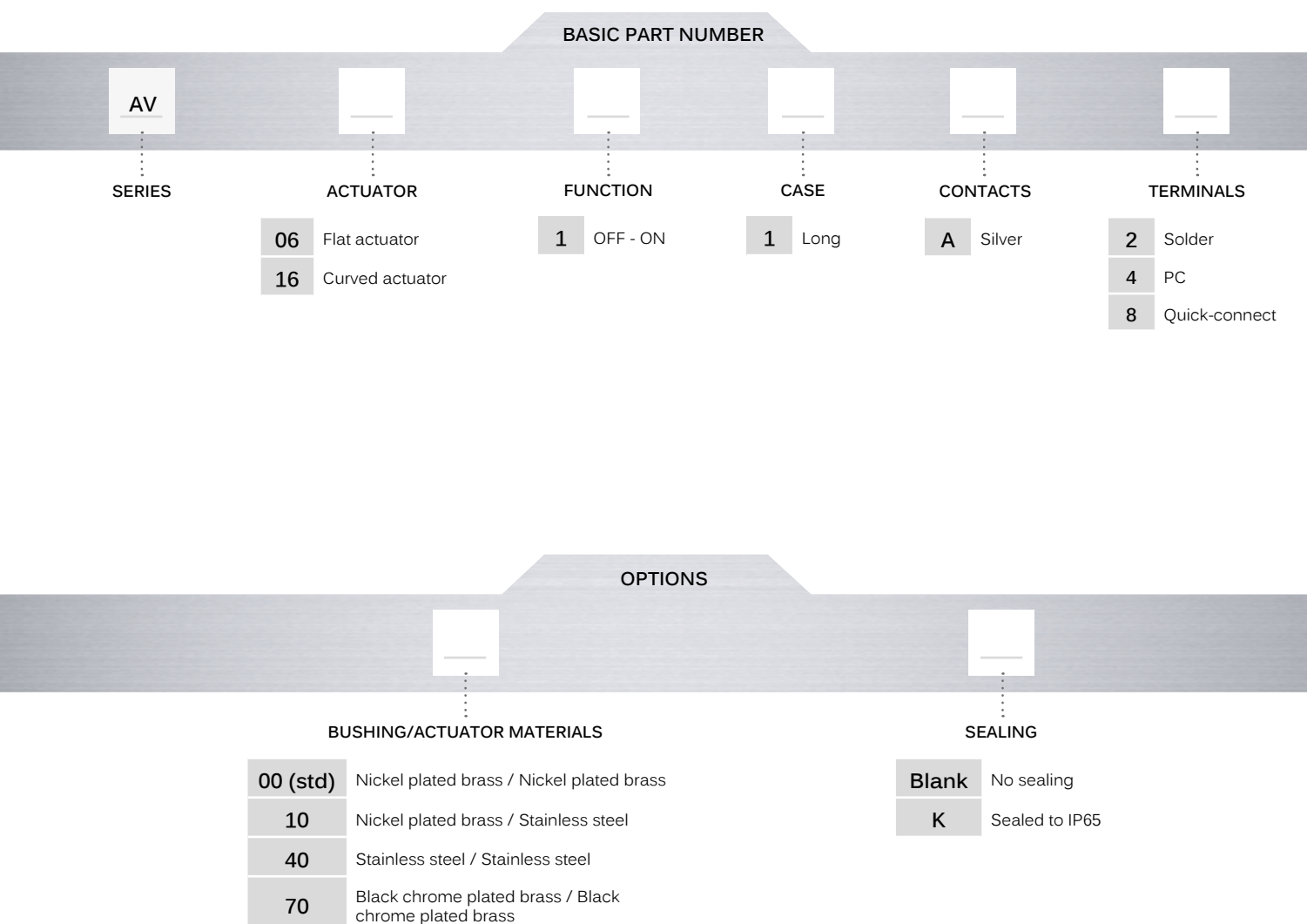
- Panel cut-out : Ø 16.2 mm (.637)
- Min. pitch for matrix mounting :  
24 mm x 24 mm (.944 x .944)

# AV series

Security pushbutton switches •  
Ø 16 mm • latching



## BUILD YOUR PART NUMBER



## ABOUT THIS SERIES

On the following pages, you will find successively basic part numbers of switches and options in the same order as in above chart.

⚠ **Notice:** please note that not all combinations of above numbers are available. Refer to the following pages for further information.

⚙ **Mounting accessories:** standard hardware supplied : 1 hex nut. Standard and special hardware is presented in the "Hardware" section of website.

# AV series

Security pushbutton switches •  
Ø 16 mm • latching

## FLAT OR CURVED ACTUATOR SOLDER LUG TERMINALS



Flat actuator

AV0611A2   OFF   ON

Curved actuator

AV1611A2 OFF ON

## FLAT OR CURVED ACTUATOR - STRAIGHT PC OR QUICK-CONNECT TERMINALS



### STRAIGHT PC TERMINALS

Flat actuator

AV0611A4 OFF ON

Curved actuator

AV1611A4 OFF ON

## QUIK-CONNECT TERMINALS

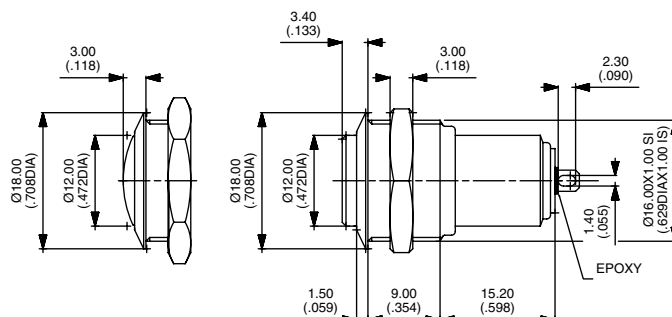
Flat actuator

AV0611A8 OFF ON

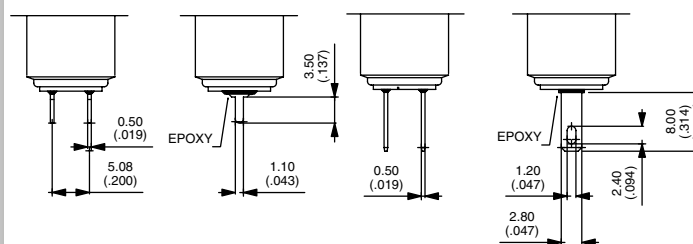
Curved actuator

AV1611A8   OFF   ON

Hex nut 19 (.748) across flats



Hex nut 19 (.748) across flats



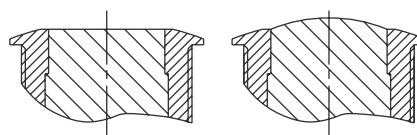
## BUSHING/ACTUATOR MATERIALS

## BASIC P/N



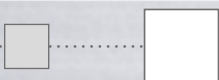
FLAT OR CURVED METAL ACTUATOR

CODE	BUSHING	ACTUATOR
<b>00 (std)</b>	Nickel plated brass	Nickel plated brass
<b>10</b>	Nickel plated brass	Stainless steel
<b>40</b>	Stainless steel	Stainless steel
<b>70</b>	Black chrome plated brass	Black chrome plated brass



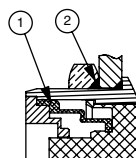
## SEALING

## BASIC P/N



<b>Blank</b>	No sealing
<b>K</b>	Front panel sealing to IP65

OPTION K



① - elastomeric membrane

② - external gasket