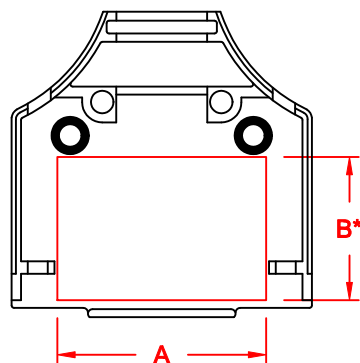
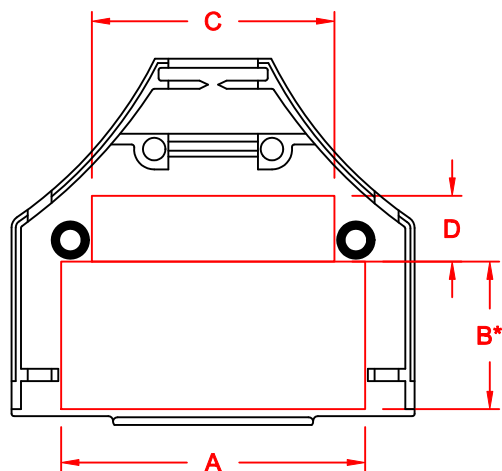


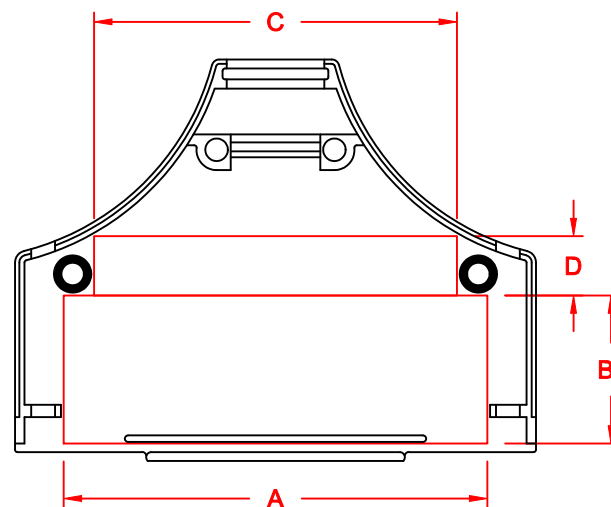
9-PIN



15-PIN



25-PIN



37-PIN

		DIMENSIONS (mm)			
		9	15	25	37
SEE NOTE 1. →	A	18.77	27.33	41.22	57.15
	B *	17.83	19.91	20.09	19.55
SEE NOTE 2. →	C			33.17	49.27
	D			8.89	7.87
	PCB	11.04	11.04	11.04	11.04

NOTE:

1. "B" DIMENSION MEASURED FROM BACK SIDE OF CONNECTOR FLANGE
2. MIN. SAFE SPACING BETWEEN BACK SHELLS FOR PCB AND MOUNTED COMPONENTS
3. THESE DIMENSIONS ARE GOOD FOR THE NICKEL PLATED DIE CAST BACK SHELLS

DIE CAST

THESE DRAWINGS AND SPECIFICATIONS ARE THE PROPERTY OF MH CONNECTORS LTD. AND SHALL NOT BE REPRODUCED, COPIED OR USED AS THE BASIS FOR THE MANUFACTURE OR SALE OF APPARATUS WITHOUT WRITTEN PERMISSION.

DRAWN P. JENKINS		DATE 03-23-12	
APPROVED D. CROFT		DATE 03-23-12	
SCALE NTS	SHEET 1	OF 1	REV: A
DRAWING No MHDM INTERNAL			



MH CONNECTORS LTD.