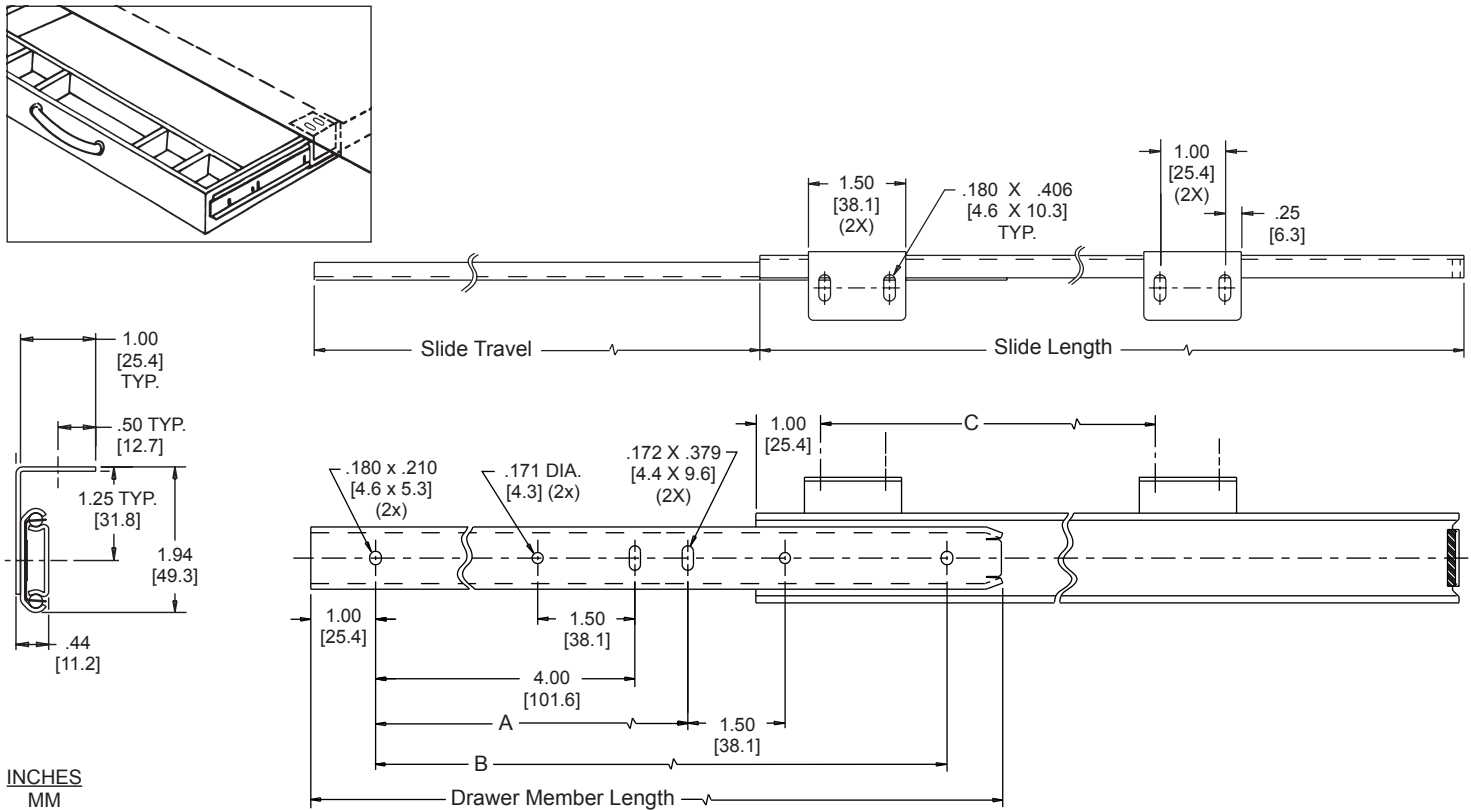




MODEL 2006

APPLICATIONS: For use in pencil and shallow drawers underneath a desk or table tops without a supporting sidewall structure. Fixed height, inboard facing brackets.

Pencil Drawer
Under Counter Slide
Up to 45 lb. [20 kg.] Capacity



Finish Bright electro-zinc (C) or black zinc [‡] (CB)

Length 12" to 28" [305mm to 711mm]

Height 1.94" [49.3mm]

Load Up to 45 lbs.* [20kg]

Travel 3/4 Extension

Mounting Drawer: Side mounted
Under Surface: Fixed height
inboard brackets

Hardware #8 pan head screws

Disconnect Friction

Features Handed; simple bracket installation

[‡] Minimum order quantities may apply.

* Load rating based on an 18" slide
on a 16" wide drawer cycled 50,000 times.

Part Number	Slide Length	Travel	Drawer Member Length	A	B	C
2006-12	12.00 [304.8]	9.00 [228.6]	11.81 [300.0]	5.95 [151.1]	9.95 [252.7]	8.50 [215.9]
2006-14	14.00 [355.6]	11.00 [279.4]	13.81 [350.7]	7.95 [201.9]	11.95 [303.5]	8.50 [215.9]
2006-16	16.00 [406.4]	12.00 [304.8]	15.81 [401.6]	9.95 [252.7]	13.95 [354.3]	8.50 [215.9]
2006-18	18.00 [457.2]	13.50 [342.9]	17.81 [452.4]	11.95 [303.5]	15.95 [405.1]	8.50 [215.9]
2006-20	20.00 [508.0]	15.00 [381.0]	19.81 [503.2]	13.95 [354.3]	17.95 [455.9]	8.50 [215.9]
2006-22	22.00 [558.8]	16.50 [419.1]	21.81 [554.0]	15.95 [405.1]	19.95 [506.7]	16.50 [419.1]
2006-24	24.00 [609.6]	17.50 [444.5]	23.81 [604.8]	17.95 [455.9]	21.95 [557.5]	16.50 [419.1]
2006-26	26.00 [660.4]	19.00 [482.6]	25.81 [655.6]	19.95 [506.7]	23.95 [608.3]	16.50 [419.1]
2006-28	28.00 [711.2]	20.00 [508.0]	27.81 [706.4]	21.95 [557.5]	25.95 [659.1]	16.50 [419.1]

Installation Instructions

Drawer Member

1. Locate the screw holes for the drawer member 1-1/8" [28.6mm] below the top of the drawer face to provide 1/8" [3.2mm] clearance between the top of the drawer face and the bottom of the desk top.
2. Position the front of the slide members 1/8" [3.2mm] behind the rear of the drawer face. Insert screws. See Figure 1.

Cabinet Member

1. Install the cabinet members using the angled mounting brackets to the underside of the desk top (work surface).
2. Position the front of the cabinet members 1/8" [3.2mm] behind the rear of the closed drawer face. See Figure 2.
3. The location of the screws for each mounting bracket is the total drawer width "W" minus 1/4" [6.4mm]. Insert screws. See Figure 3.

Slide Ordering Instructions

Complete your slide order for model 2006 by specifying the following:

Required Slides _____ 100 Pair _____ C _____ 2006 _____ -18 _____ D _____
 Slide Finish _____
 Slide Model _____
 Slide Length _____
 Optional Polybag Packaging _____

Packaging

Distributor (D) Pack: Polybag packaging includes one pair of slides and mounting screws.

Lengths: 12"-22" are packaged 10 per box
 Lengths: 24"-28" are packaged 5 pair per box

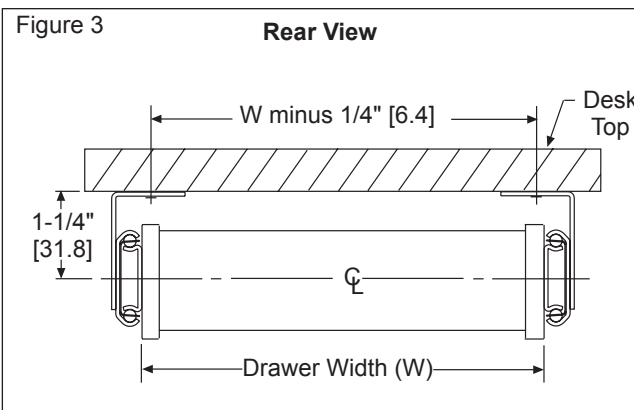
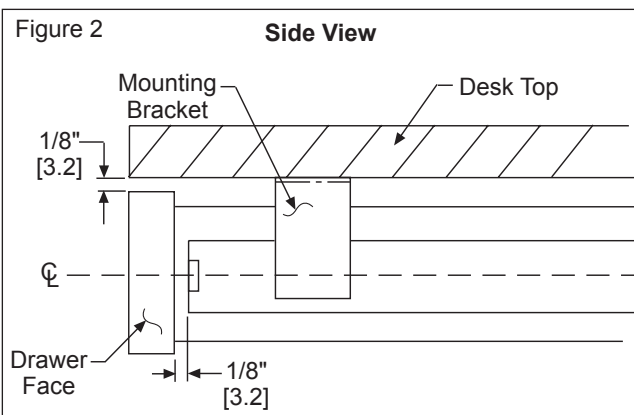
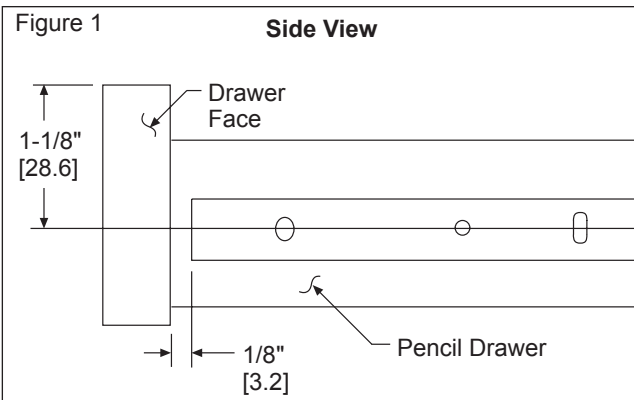
Bulk Pack: Slides only. Left hand slides and right hand slides are packaged in separate boxes.

Lengths 12" - 22" 30 each per box
 Lengths 24" - 28" 20 each per box

Specifications

Slide members and ball retainers: Cold rolled steel
 Ball bearings: Carburized steel

Note: Specifications, materials, prices, terms, and delivery are subject to change without notice.



Accuride

ACCURIDE INTERNATIONAL INC.

12311 Shoemaker Avenue
 Santa Fe Springs, CA 90670

TEL (562) 903-0200

FAX (562) 903-0208

www.accuride.com

Manufacturing, Engineering, and Sales

United States • Germany • Japan • Mexico • United Kingdom