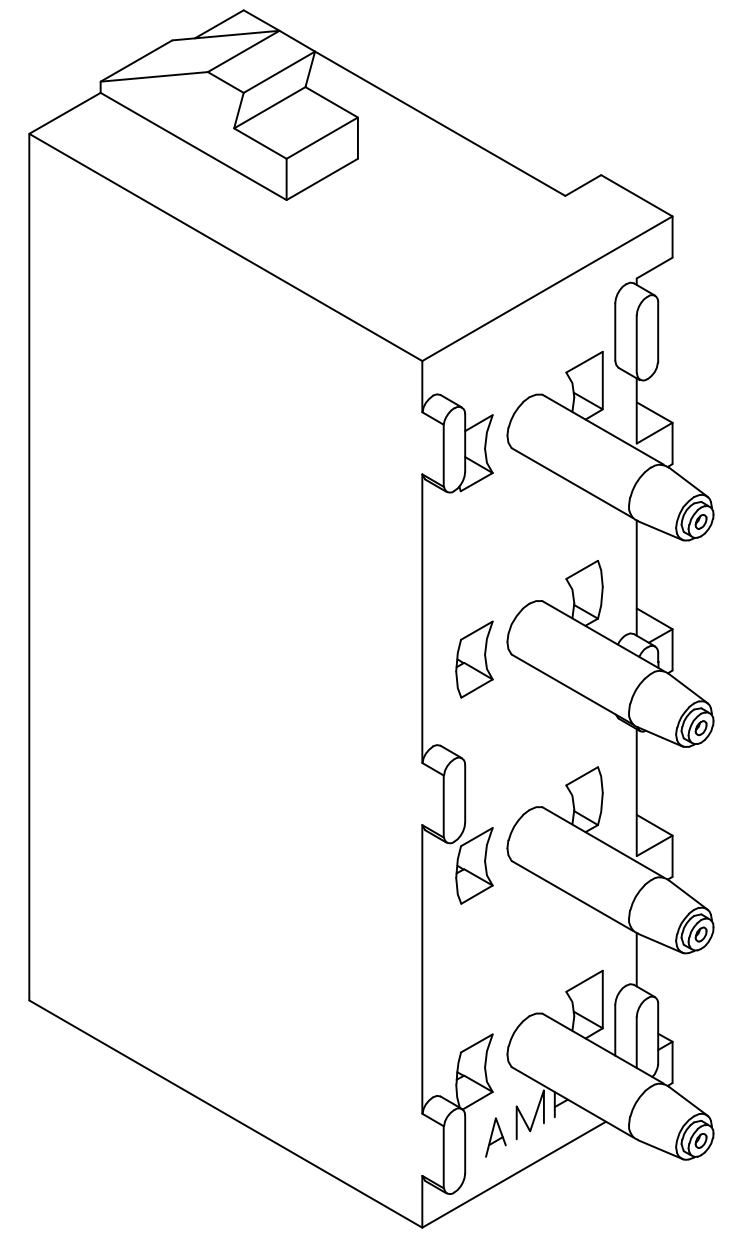
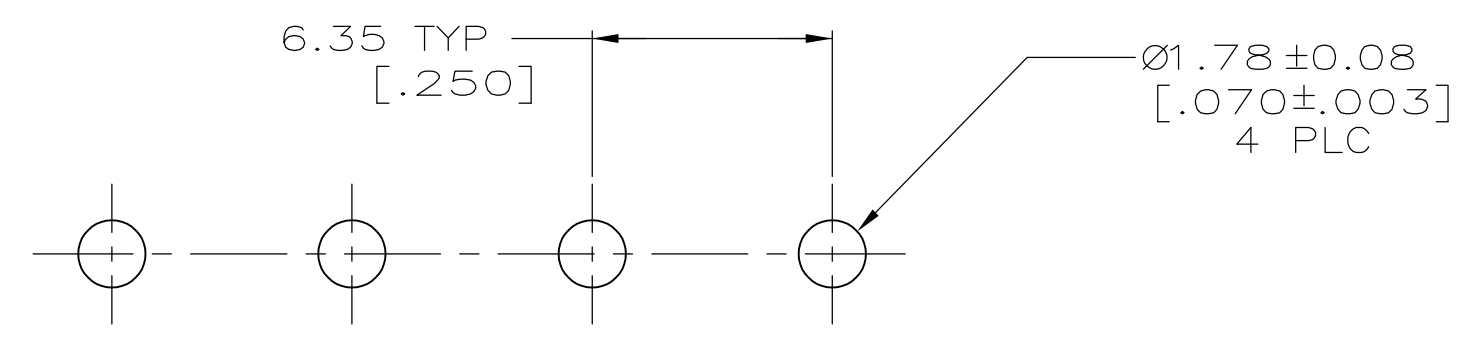
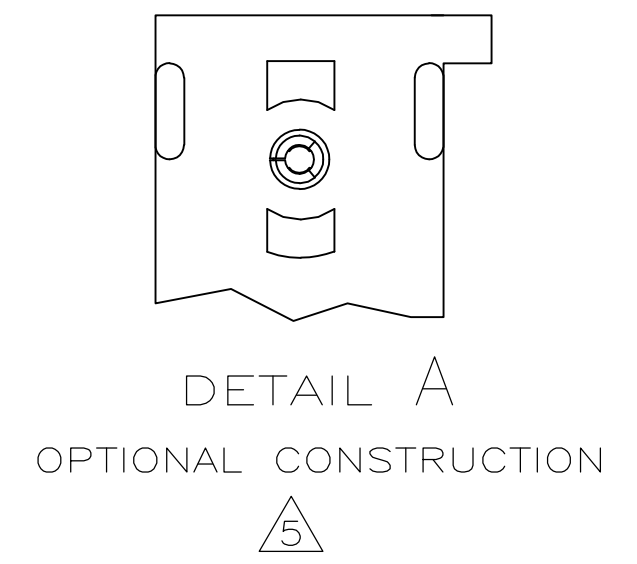
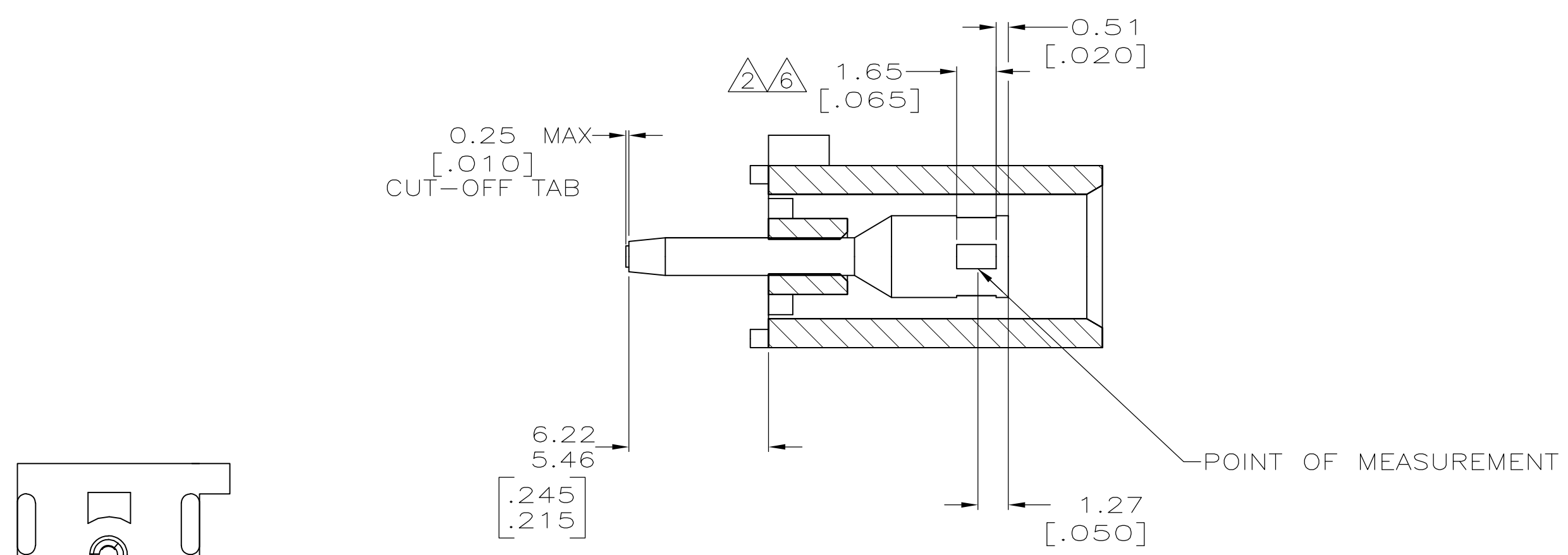




- 1 PARTS COMPLY TO AMP SOLDERABILITY SPECIFICATION 109-11-3.
- 2 CONTACT IS PLATED OVERALL WITH 0.00127 [.000050] NICKEL, THEN 0.00076 [.000030] GOLD OVER CONTACT LENGTH INDICATED AND MATTE TIN LEAD ON SOLDER TAIL END.
- 3 CIRCUIT IDENTIFICATION CHARACTERS ARE ADJACENT TO THE INDICATED CAVITIES, BUT LOCATION AND ORIENTATION MAY DIFFER FROM PRINT.
- 4 DIMENSIONS IN BRACKETS ARE IN INCHES.
- 5 DRAIN HOLES LOCATED AS SHOWN. OPTIONAL CONSTRUCTION - ALL DRAIN HOLES LOCATED 90° AS SHOWN IN DETAIL A.
- 6 CONTACT IS PLATED OVERALL WITH 0.00127 [.000050] NICKEL, THEN 0.00076 [.000030] GOLD OVER CONTACT LENGTH INDICATED AND MATTE TIN ON SOLDER TAIL END.
- 7 SUPERSEDED BY 350833-4



3-DIMENSIONAL MODEL  
NTS



RECOMMENDED MOUNTING HOLE PATTERN  
FOR 3.18 [.125] THICK P.C. BOARD

7	PHOSPHOR BRONZE, GOLD		6	NYLON,UL94V-0,WHITE		350833-4	
	PHOSPHOR BRONZE, GOLD		2	NYLON,UL94V-0,WHITE		350833-2	
	PHOSPHOR BRONZE, PRE-TIN			NYLON,UL94V-0,WHITE		350833-1	
	CONTACT MATERIAL AND FINISH			HOUSING MATERIAL		PART NUMBER	
THIS DRAWING IS A CONTROLLED DOCUMENT.				DWN B. LEWIS 10-02-98		 TE Connectivity	
DIMENSIONS: mm [INCHES]		TOLERANCES UNLESS OTHERWISE SPECIFIED:		CHK R. SWING 10-02-98			
		AP'D M. TRULL 10-02-98		NAME			
		PRODUCT SPEC		SOCKET HEADER ASSEMBLY, 4 CIRCUIT UNIVERSAL MATE-N-LOK™			
MATERIAL SEE TABLE		FINISH SEE TABLE		APPLICATION SPEC		RESTRICTED TO	
				WEIGHT —		SIZE A1	
				CUSTOMER DRAWING		CAGE CODE 00779	
						DRAWING NO 350833	
						SCALE 5:1	
						SHEET 1 OF 1	
						REV N1	