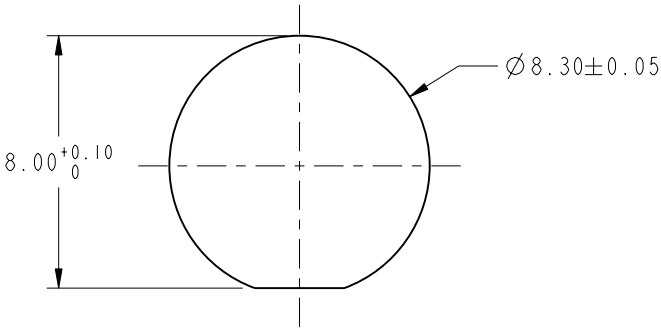
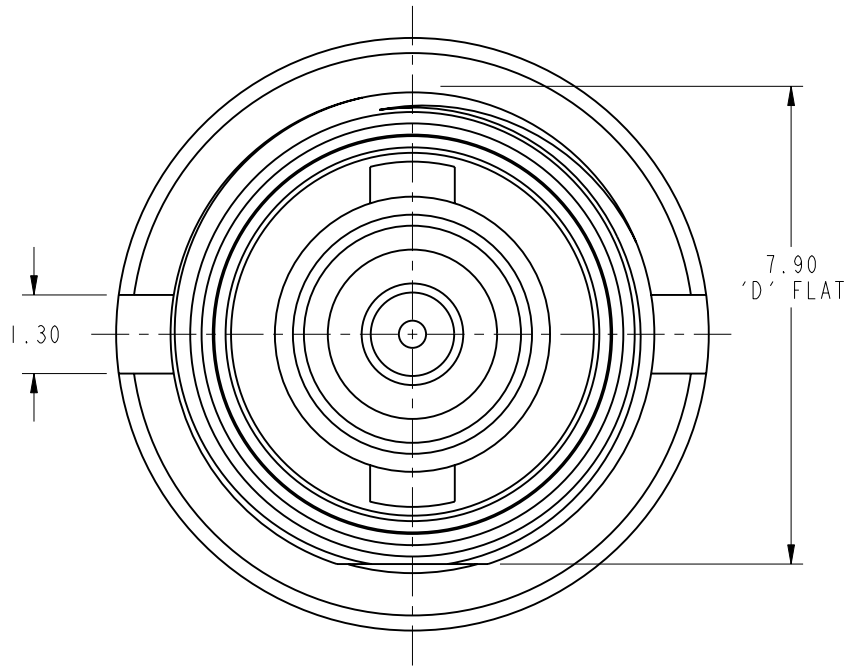
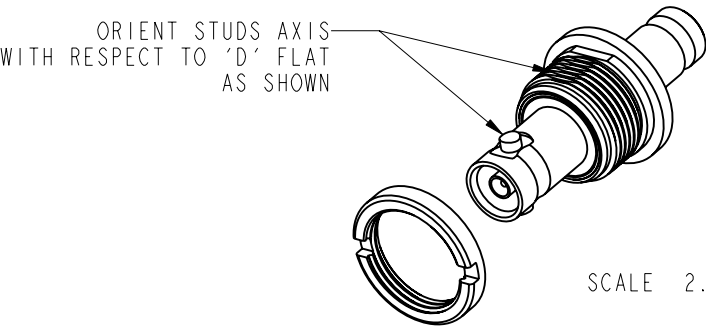
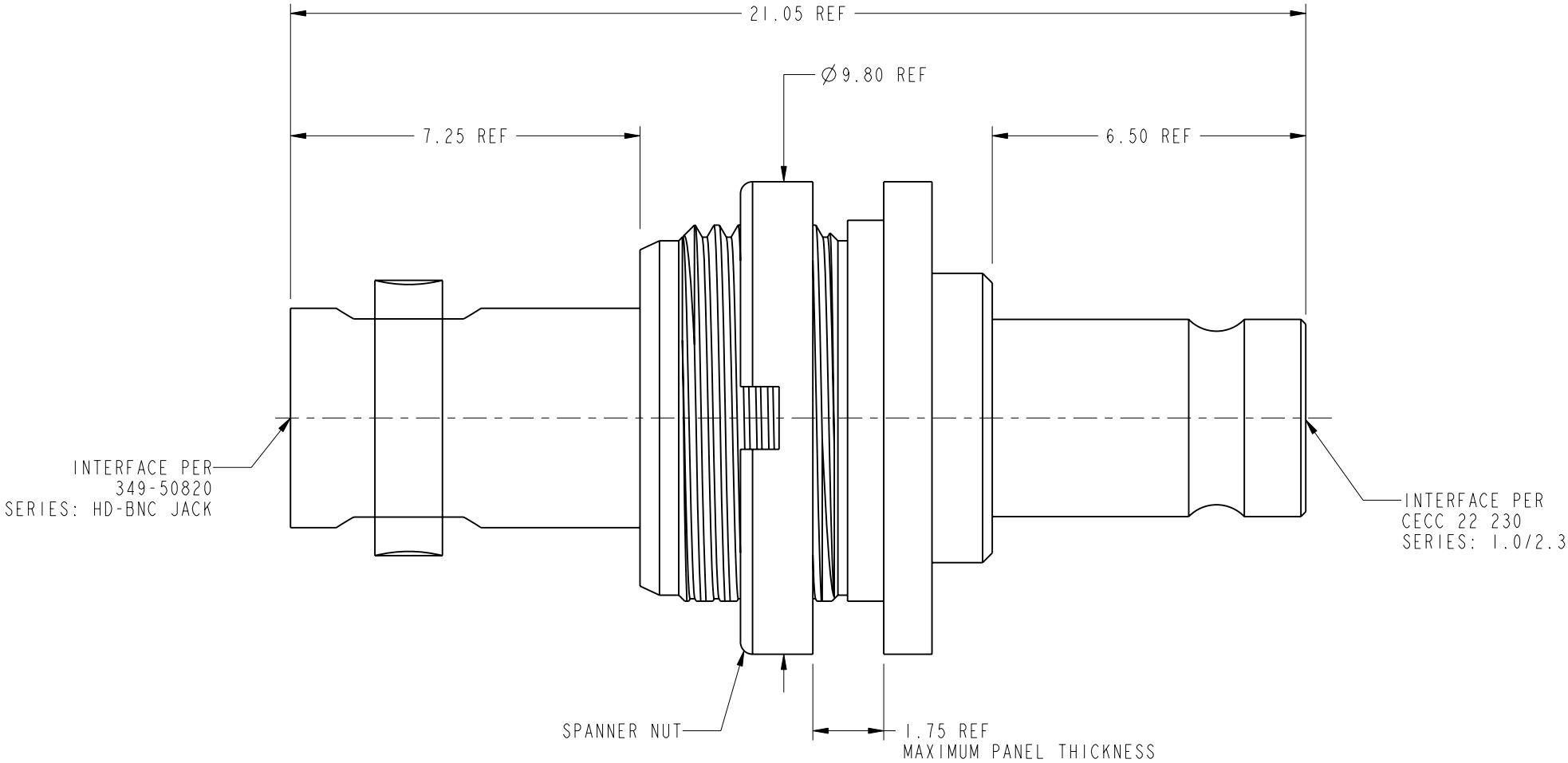


NOTES:

1. MATERIALS AND FINISHES:  
BODIES - BRASS, NICKEL PLATING  
CONTACT - BeCu, GOLD PLATING  
SLEEVE - DELRIN  
INSULATOR - PTFE
2. ELECTRICAL:  
A. IMPEDANCE: 75 OHM  
B. FREQUENCY RANGE: DC - 3 GHz  
C. RETURN LOSS: -25 dB MIN @ 3 GHz
3. MECHANICAL:  
A. DURABILITY: 500 CYCLES MIN.  
B. TEMPERATURE RANGE: +65° C TO -165° C
4. PACKAGING:  
A. QUANTITY: SINGLE PACK  
B. MARKING: BAG TO BE MARKED  
"AMPHENOLRF,APH-HD-ISO-1023 AND DATE CODE"



SCALE 4.200  
RECOMMENDED MOUNTING  
HOLE DIMENSIONS



CUSTOMER OUTLINE DRAWING  
ALL OTHER SHEETS ARE FOR INTERNAL USE ONLY

<div>UNLESS OTHERWISE SPECIFIED, DIMENSIONS ARE IN METRIC AND TOLERANCES ARE: &lt;0.5mm 0.5 - 6mm 6 - 30mm 30 - 120mm ANGLES ± 0.05mm ±0.1mm ±0.2mm ± 0.3mm ±1°</div> <div>NOTICE - These drawings, specifications, or other data (1) are, and remain the property of Amphenol corp. (2) must be returned upon request; and (3) are confidential and not to be disclosed to any person other than those to whom they are given by Amphenol Corp. the furnishing of these drawings, specifications, or other data by Amphenol Corp., or to any other person to anyone for any purpose is not to be regarded by implication or otherwise in any manner licensing, granting rights to permitting such holder or any other person to manufacture, use or sell any product, process or design, patented or otherwise, that may in any way be related to or disclosed by said drawings, specifications, or other data.</div>	MATERIAL	DRAWN	DATE	TITLE ISOLATED ADAPTER HD BNC STR JACK TO 1.0/2.3 JACK		Amphenol RF www.amphenolrf.com	
	SEE NOTES	ENGINEER	DATE				
	REFERENCE	APPROVED	DATE				
	EAR # 4295 AND EXP:615X-2759-100 CONFIGURATION LEVEL: <input type="checkbox"/> <input type="checkbox"/> <input type="checkbox"/> <input type="checkbox"/>	S.HSIEH	25-Jul-11	SCALE: 8.0:1.0	SHEET 2 OF 2	DRAWING NO.APH-HD-ISO-1023	ITEM NO.APH-HD-ISO-1023
	FINISH	CAD FILE		DWG SIZE B	REV B	PART NO.APH-HD-ISO-1023	

# Mouser Electronics

Authorized Distributor

Click to View Pricing, Inventory, Delivery & Lifecycle Information:

[Amphenol:](#)

[APH-HD-ISO-1023](#)