

4

3

2

1

THIS DRAWING IS UNPUBLISHED.

RELEASED FOR PUBLICATION

© COPYRIGHT

ALL RIGHTS RESERVED.

LOC

DIST


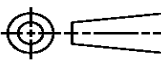
REVISIONS

P	LTR	DESCRIPTION	DATE	DWN	APVD
	A1	ECR-14-003271	05MAR2014	GK	HMR

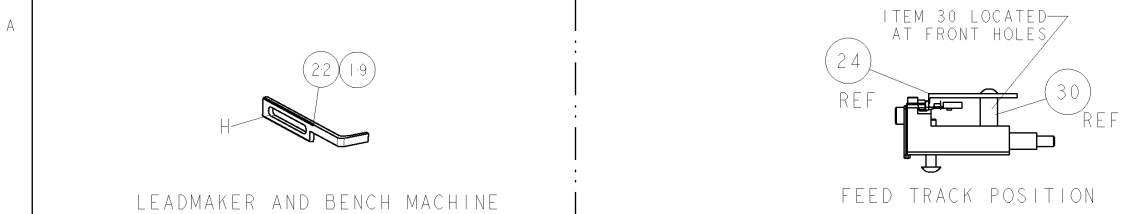
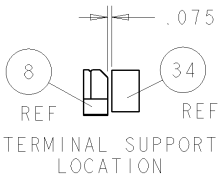
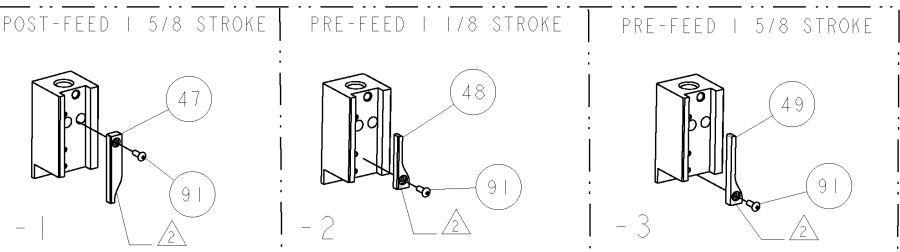
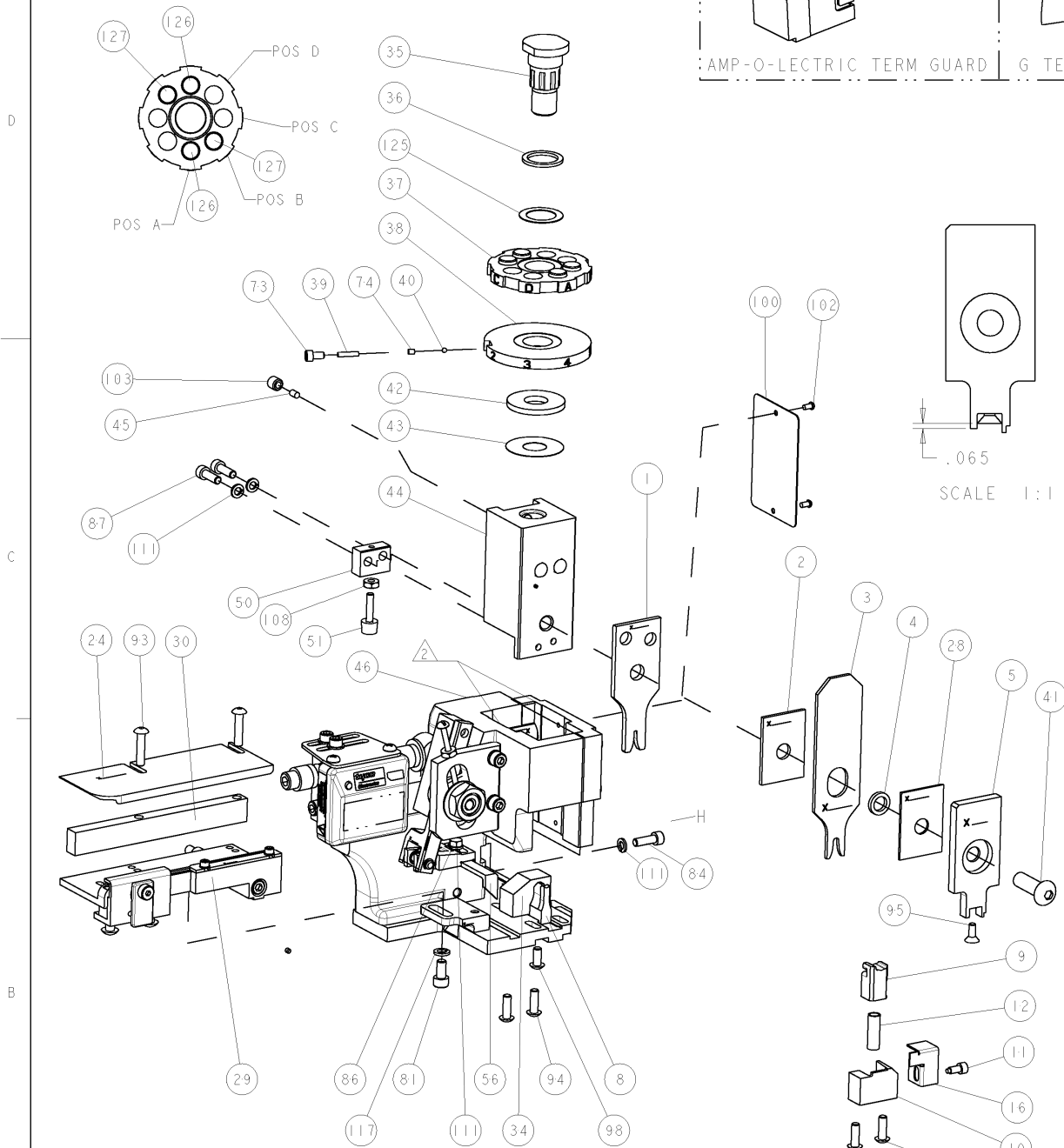
REPLACED BY OCEAN STYLE APPLICATOR PART
NUMBER 2266099-1

FOR REPLACEMENT PARTS FOR APPLICATOR 1852109
REFER TO ADDITIONAL PAGE(S). SPARE PARTS KIT (IF LISTED)
WILL REMAIN AVAILABLE.

THE REPLACEMENT OCEAN STYLE APPLICATOR HAS THE
SAME TERMINATOR/PRESS INTERFACE AS APPLICATOR
1852109

THIS DRAWING IS A CONTROLLED DOCUMENT.		DWN GOPALAKRISHNA HV		 TE Connectivity			
DIMENSIONS:		CHK RAGHAVENDRA					
		APVD RAGHAVENDRA		NAME SIDE FEED HDM APPLICATOR			
		PRODUCT SPEC					
		APPLICATION SPEC					
MATERIAL		WEIGHT		SIZE A3	CAGE CODE	DRAWING NO C- 1852109	RESTRICTED TO
FINISH		CUSTOMER DRAWING		SCALE		SHEET 1 OF 2	REV A1

8				7			
THIS DRAWING IS UNPUBLISHED.				RELEASED FOR PUBLICATION			
20				20			
(C) COPYRIGHT 20 BY TYCO ELECTRONICS CORPORATION. ALL RIGHTS RESERVED.							
PART NUMBER		REV	FIRST USED	POWER UNIT		FEED TYPE	
1852109-1		A	122500-1	LEADMAKER		POST FEED	
1852109-2		A	565435-5	BENCH MODEL K		PRE FEED	
1852109-3		A	354500-1	BENCH MODEL G		PRE FEED	



AMP-O-ELECTRIC TERM GUARD G TERMINATOR GUARD

- 1 RECOMMENDED SPARE PARTS
- 2 GREASE LIGHTLY
- 3 GUARD MUST BE IN PLACE WHEN OPERATING APPLICATOR IN A BENCH MACHINE

-	-	-	-	-	-	-	129
-	-	-	-	-	-	-	128
2	2	2	-	4-354779-8	PIN, WIRE DISC, .3230	-	127
2	2	2	-	4-354779-0	PIN, WIRE DISC, .3190	-	126
1	1	1	-	986950-1	WASHER, FLAT PRECISION	-	125
1	1	1	-	217238-1	GENERAL INSTRUCTION PKG	-	124
1	1	1	-	4088040	SF APPL INST 408-8040	-	123
-	-	-	-	-	-	-	122
-	-	-	-	-	-	-	121
-	-	-	-	-	-	-	120
-	-	-	-	-	-	-	119
-	-	-	-	-	-	-	118
1	1	1	-	21024-5	WASHER, SPRG LOCK, REG NO 10	-	117
-	-	-	-	-	-	-	116
-	-	-	-	-	-	-	115
-	-	-	-	-	-	-	114
-	-	-	-	-	-	-	113
-	-	-	-	-	-	-	112
4	4	4	-	21024-4	WASHER, SPRG LOCK, REG NO 8	-	111
-	-	-	-	-	-	-	110
-	-	-	-	-	-	-	109
1	1	1	-	21018-5	NUT, HEX, REG 6-32	-	108
-	-	-	-	-	-	-	107
-	-	-	-	-	-	-	106
-	-	-	-	-	-	-	105
-	-	-	-	-	-	-	104
1	1	1	-	21009-2	SCR, SET, SELF LOCKING 1/4-20 X .250	-	103
2	2	2	-	21017-2	SCREW, DRIVE	-	102
-	-	-	-	-	-	-	101
1	1	1	-	461264-1	PLATE, IDENTIFICATION	-	100
-	-	-	-	-	-	-	99
1	1	1	-	22733-8	SCR, BHSC, SELF-LOCKING, 8-32 X .375	-	98
-	-	-	-	-	-	-	97
-	-	-	-	-	-	-	96
1	1	1	-	1-21003-9	SCR, FLT SKT HD CAP 6-32 X .375	-	95
4	4	4	-	2-21002-2	SCR, BTN SKT HD CAP 8-32 X .500	-	94
2	2	2	-	2-21002-4	SCR, BTN SKT HD CAP 8-32 X .750	-	93
-	-	-	-	-	-	-	92
1	1	1	-	1-21002-7	SCR, BTN SKT HD CAP 6-32 X .375	-	91
-	-	-	-	-	-	-	90
-	-	-	-	-	-	-	89
-	-	-	-	-	-	-	88
2	2	2	-	2-21000-7	SCR, SKT HD CAP 8-32 X .500	-	87
1	1	1	-	2-22603-0	SCR, HEX HD CAP 8-32 X .312	-	86
-	-	-	-	-	-	-	85
1	1	1	-	2-21000-7	SCR, SKT HD CAP 8-32 X .500	-	84
-	-	-	-	-	-	-	83
-	-	-	-	-	-	-	82
1	1	1	-	3-21000-4	SCR, SKT HD CAP 10-32 X .375	-	81
-	-	-	-	-	-	-	80
-	REF	-	-	455749-1	GUARD WINDOW	-	79
REF	-	-	-	679532-1	INSERT, GUARD	-	78
-	-	-	-	-	-	-	77
-	-	-	-	-	-	-	76
-	-	-	-	-	-	-	75
1	1	1	-	690603-1	SPRING ASSIST AMP-O-MATOR APPLICATOR	-	74
-3	-2	-1	U/M	PART NO	DESCRIPTION	ITEM NO	

Mouser Electronics

Authorized Distributor

Click to View Pricing, Inventory, Delivery & Lifecycle Information:

[TE Connectivity:](#)

[1852109-2](#)