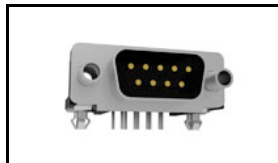


5747844-6 Product Details



5747844-6

TE Internal Number: 5747844-6



Active

Standard Board Mount Connectors



Always EU RoHS/ELV Compliant

(Statement of Compliance)

Product Highlights:

- 9 Positions
- Connector Style = Receptacle
- PCB Mounting Orientation = Right Angle
- Product Series = HD 20
- With Mating Connector Lock

Documentation & Additional Information

Product Drawings:

- [RECEPTACLE ASSEMBLY, SIZE 1, RIGHT ANGLE, .318 SERIE...](#) (PDF, English)

Catalog Pages/Data Sheets:

- [AMPLIMITE Subminiature D Connectors - Right-Angle Po...](#) (PDF, English)

Product Specifications:

- None Available

Application Specifications:

- None Available

Instruction Sheets:

- None Available

CAD Files: (CAD Format & Compression Information)

- [2D Drawing](#) (DXF, Version O)
- [3D Model](#) (IGES, Version O)
- [3D Model](#) (STEP, Version O)

Additional Information:

- [Product Line Information](#)

Additional Product Images:

- [Product Photo](#)

Related Products:

- [Tooling](#)
- [Mating Products \(12\)](#)

Product Features (Please use the Product Drawing for all design activity)

Product Type Features:

- [PCB Mounting Orientation](#) = Right Angle
- [Product Series](#) = HD 20
- [Mating Connector Lock](#) = With
- Mating Connector Lock Type = Female Screwlocks, Fixed
- [PCB Mount Retention](#) = With
- [PCB Mount Retention Type](#) = Boardlock(s)
- [Shell Type](#) = Front Metal Shell
- [Shell Size](#) = 1
- [Footprint \(mm \[in\]\)](#) = 8.08 [.318]
- [Grounding Indents](#) = Without
- [Grounding Straps](#) = With
- [PCB Mount Style](#) = Through Hole
- [Color Code](#) = None
- Sealed = No
- Profile = Standard
- Post Size (mm [in]) = 0.66 [.026]
- Mounting Hole Diameter (mm [in]) = 3.18 [.125]
- Shell Material = Steel
- Eyelet Material = Brass

Dimensions:

- [PCB Thickness, Recommended \(in \[mm\]\)](#) = 0.062 [1.57]

Body Features:

- Shell Plating = Tin
- Female Screwlock Material = Zinc
- Female Screwlock Plating = Clear Chromate
- Eyelet Plating = Tin

Contact Features:

- [Contact Plating, Mating Area, Material](#) = Gold (30)
- Contact Shape = Round
- Contact Base Material = Phosphor Bronze

Housing Features:

- Connector Style = Receptacle
- UL Flammability Rating = UL 94V-0
- Housing Material = Thermoplastic - GF

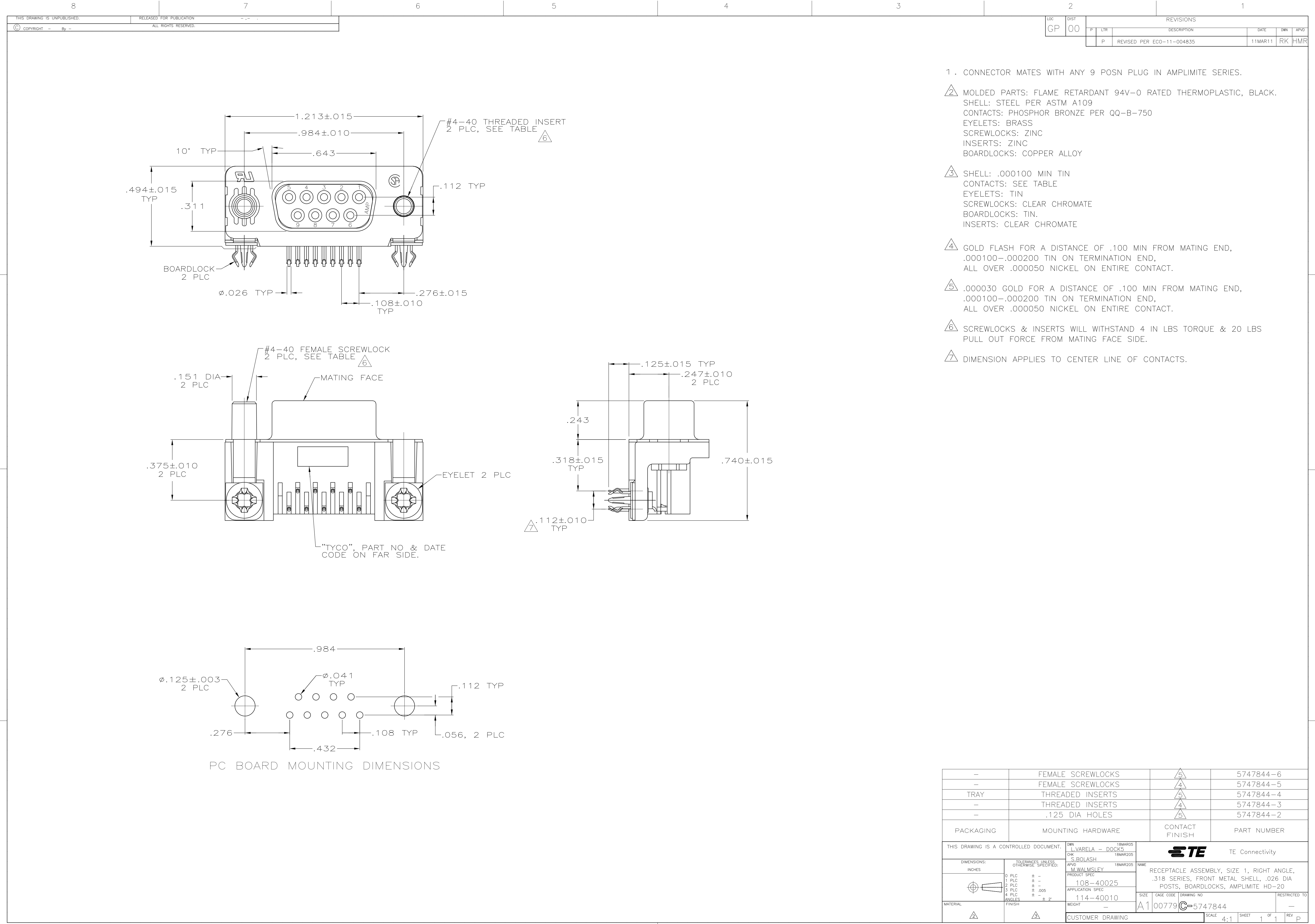
Configuration Features:

- [Number of Positions](#) = 9

Mechanical Attachment:

Industry Standards:

<ul style="list-style-type: none">• Panel Mount Retention = Without• Boardlock Material = Copper Alloy• Boardlock Plating = Tin <p>Termination Features:</p> <ul style="list-style-type: none">• Grounding Clips = Without• Termination Post Length (mm [in]) = 3.18 [0.125]• Solder Tail Contact Plating = Tin over Nickel	<ul style="list-style-type: none">• RoHS/ELV Compliance = RoHS compliant, ELV compliant• Lead Free Solder Processes = Wave solder capable to 260°C, Wave solder capable to 240°C, Wave solder capable to 265°C• RoHS/ELV Compliance History = Always was RoHS compliant <p>Other:</p> <ul style="list-style-type: none">• Brand = AMP• Comment = All receptacles are preloaded with size 20 DF posted socket contacts
--	---



- 1 . CONNECTOR MATES WITH ANY 9 POSN PLUG IN AMPLIMITE SERIES.
- 2 MOLDED PARTS: FLAME RETARDANT 94V-0 RATED THERMOPLASTIC, BLACK.
SHELL: STEEL PER ASTM A109
CONTACTS: PHOSPHOR BRONZE PER QQ-B-750
EYELETS: BRASS
SCREWLOCKS: ZINC
INSERTS: ZINC
BOARDLOCKS: COPPER ALLOY
- 3 SHELL: .000100 MIN TIN
CONTACTS: SEE TABLE
EYELETS: TIN
SCREWLOCKS: CLEAR CHROMATE
BOARDLOCKS: TIN.
INSERTS: CLEAR CHROMATE
- 4 GOLD FLASH FOR A DISTANCE OF .100 MIN FROM MATING END,
.000100-.000200 TIN ON TERMINATION END,
ALL OVER .000050 NICKEL ON ENTIRE CONTACT.
- 5 .000030 GOLD FOR A DISTANCE OF .100 MIN FROM MATING END,
.000100-.000200 TIN ON TERMINATION END,
ALL OVER .000050 NICKEL ON ENTIRE CONTACT.
- 6 SCREWLOCKS & INSERTS WILL WITHSTAND 4 IN LBS TORQUE & 20 LBS
PULL OUT FORCE FROM MATING FACE SIDE.
- 7 DIMENSION APPLIES TO CENTER LINE OF CONTACTS.

-	FEMALE SCREWLOCKS	5	5747844-6
-	FEMALE SCREWLOCKS	4	5747844-5
TRAY	THREADED INSERTS	5	5747844-4
-	THREADED INSERTS	4	5747844-3
-	.125 DIA HOLES	5	5747844-2
PACKAGING	MOUNTING HARDWARE	CONTACT FINISH	PART NUMBER
THIS DRAWING IS A CONTROLLED DOCUMENT.		DWG L.VARELA - DOCKS 18MAR05 CHK S.BOLASH 18MAR205 APVD M.WALMSLEY 18MAR205 NAME	
DIMENSIONS: INCHES		TE Connectivity	
TOLERANCES UNLESS OTHERWISE SPECIFIED: 0 PLC ± - 1 PLC ± - 2 PLC ± - 3 PLC ± .005 4 PLC ± - ANGLES ± 2°		RECEPTACLE ASSEMBLY, SIZE 1, RIGHT ANGLE, .318 SERIES, FRONT METAL SHELL, .026 DIA POSTS, BOARDLOCKS, AMPLIMITE HD-20	
MATERIAL		SIZE CAGE CODE DRAWING NO RESTRICTED TO	
FINISH		A1 00779 C=5747844	
WEIGHT -		SCALE 4:1 SHEET 1 OF 1 REV P	
CUSTOMER DRAWING			