

Manual Switches  
Mounting Dimensions (For Reference Only)

AML11/12 and 21/22 SWITCHES  
AML41C/D and AML42C INDICATORS

PUSHBUTTONS

LED Display

Non-illuminated or Incandescent Lamp Display

Non-illuminated or Incandescent Lamp Display

For terminal locations, see page 61.

AML27 SWITCHES

KEYLOCK

For terminal locations, see page 62.

AML14/16 and AML24/26 SWITCHES

ROCKERS

LED Display

Non-Illuminated or Incandescent Lamp Display

For terminal locations, see page 61, 62.

AML13/15 and 23/25 SWITCHES

PADDLES

LED Location Same as Rocker

For terminal locations, see page 61, 62.

AML41 INDICATOR

LENS STYLE

For terminal locations, see page 62.

AML42 INDICATOR

MINIATURE

For terminal locations, see page 62.

TERMINAL TYPES

Solder or Quick Connect

Printed Circuit

Solder Hole will accept two #22 AWG Stranded Conductor (per NEMA publication DC-2 1976)

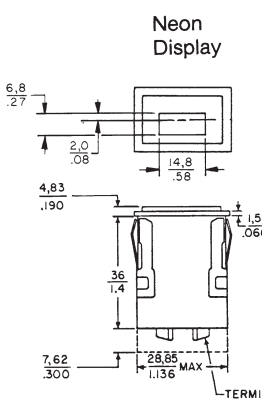
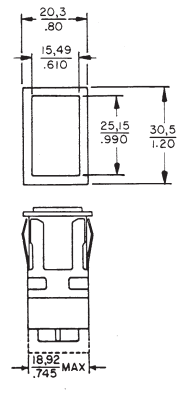
Manuals

Honeywell • Sensing and Control • 1-800-537-6945 USA • +1-815-235-6847 International • 1-800-737-3360 Canada 59

# Manual Switches

## Mounting Dimensions (For Reference Only)

AML Series

<div><div>AML31/32 SWITCHES</div><div>PUSHBUTTON</div><div><div>Neon Display</div><p>Neon Display Pushbutton mounting dimensions: 6.8/.27, 2.0/.08, 4.83/.190, 14.8/.58, 1.52/.060, 36/1.4, 7.62/.300, 28.85 MAX, 1.136 MAX, TERMINAL BARRIER.</p></div><div><div>Non-illuminated or Incandescent Lamp Display</div><p>Non-illuminated or Incandescent Lamp Display Pushbutton mounting dimensions: 20.3/.80, 15.49/.610, 25.15/.990, 30.5/1.20, 18.92 MAX, 1.745 MAX.</p></div></div>
---





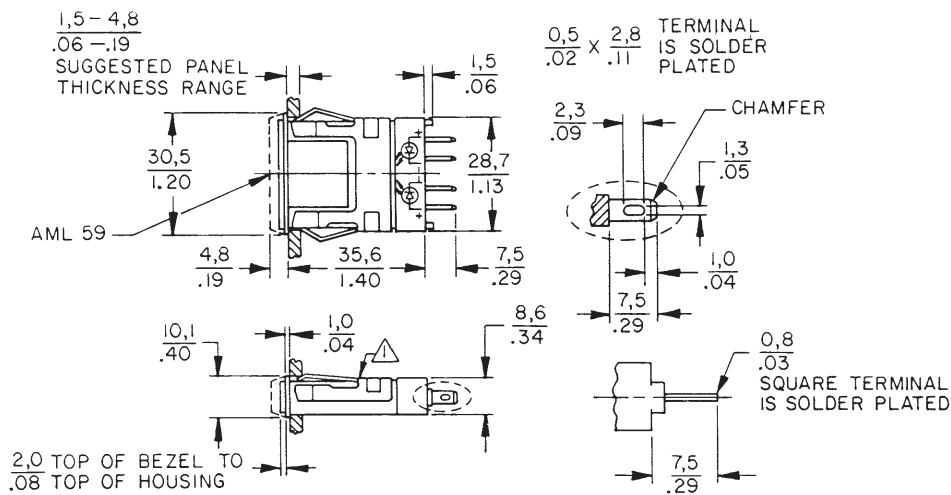
# Manual Switches

## Mounting Dimensions (For Reference Only)

AML Series

### ANNUNCIATORS

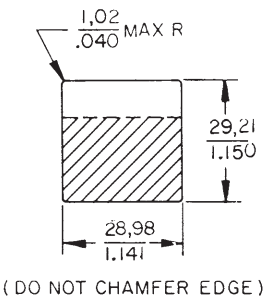
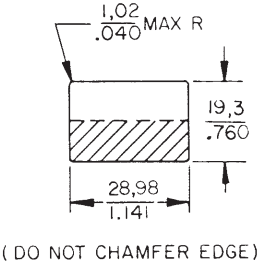
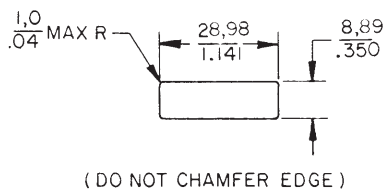
#### AML45 SERIES




PANEL CUTOUT

PANEL CUTOUT FOR MOUNTING TWO ANNUNCIATORS IN ONE CUTOUT (USING ONE 30PAI-AML)

PANEL CUTOUT FOR AML 45 ABUTTING AML SWITCH (USING ONE 30PAI-AML)



 Manufacturer's logo on this side of housing

Manuals

For panel punch manufacturer, see page 60.

Manual Switches

Mounting Dimensions (For Reference Only)

AML Series

MULTI-STATION FRONT-PANEL MOUNTING

Panel cutouts (See page 61 for panel punch manufacturer.)

Square Switches & Indicators	Rect. Switches & Indicators	Annunciator
(.8) (No. of units) — .045* (20,3) (No. of units) — 1,14*	(1.20) (No. of units) — .045* (30,5) (No. of units) — 1,14*	(.40) (No. of units) — .045* (10,1) (No. of units) — 1,14*

For each barrier, add .053/1,35

\* Note: If barriers are used, do not subtract .045 in./1,14 mm from the panel cutout formula. (.045 in./1,14mm is the allowance for the width of the bezel.)

AML61 MULTI-STATION SUBPANEL MOUNTING

Panel cutouts for AML61

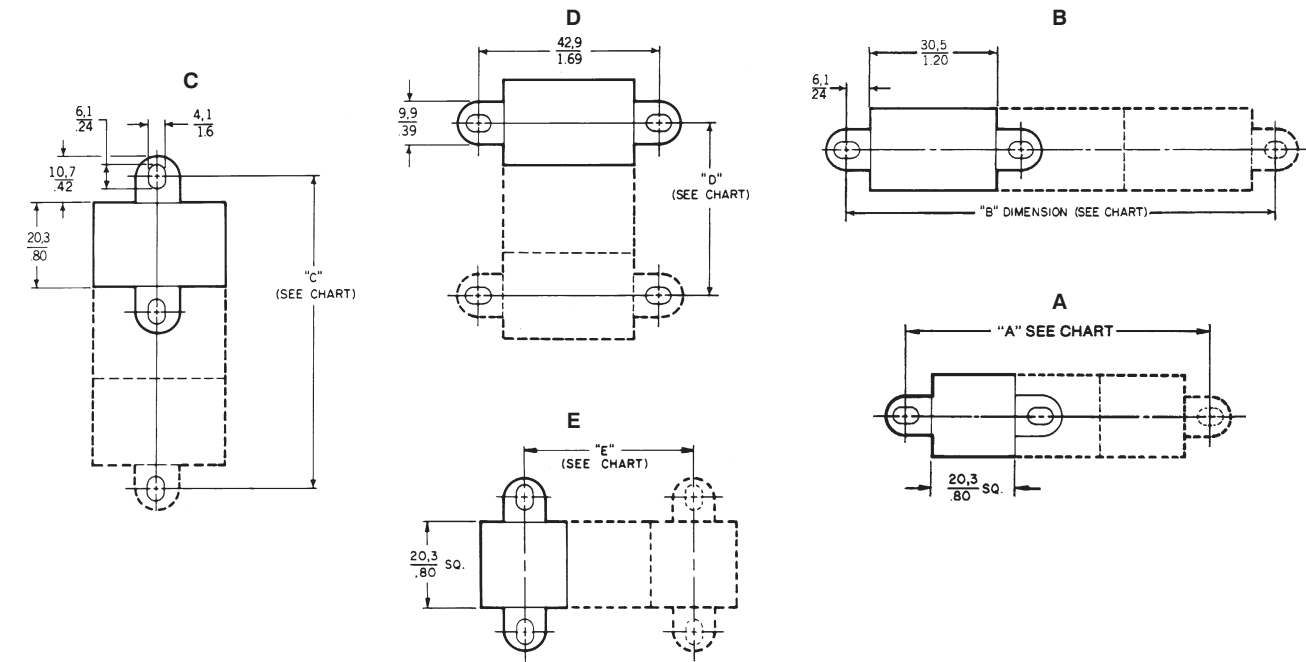
Mounting Bracket Orientation	Width	Length
A* in. mm	.810 20,57	(.810)(No. of units)
B in. mm	.810 20,57	(1.210)(No. of units)
C or D* in. mm	1.210 27,94	(.810)(No. of units)

\* More than two cans with mounting brackets required for strips of more than 10 units.

AML61 MOUNTING CENTERS

Mounting Bracket Orientation		Mounting Centers/Number of Cans											
		1	2	3	4	5	6	7	8	9	10	11	12
"A" or "C"	in. mm	1.285 32,64	2.095 53,21	2.905 73,79	3.715 94,36	4.525 114,94	5.335 135,51	6.145 156,08	6.955 176,66	7.765 197,23	8.575 217,81	9.385 238,38	10.195 258,95
"B"	in. mm	1.685 42,80	2.895 73,53	4.105 104,27	5.315 135,00	6.525 165,74	7.735 196,48	8.945 227,20	10.155 257,94				
"D" or "E"	in. mm	on C <sub>L</sub> on C <sub>L</sub>	.807 20,50	1.614 41,00	2.421 61,49	3.228 81,99	4.035 102,49	4.842 122,99	5.649 143,48	6.456 163,98	7.263 184,48	8.070 204,98	8.877 225,48

Tolerance = ±.015

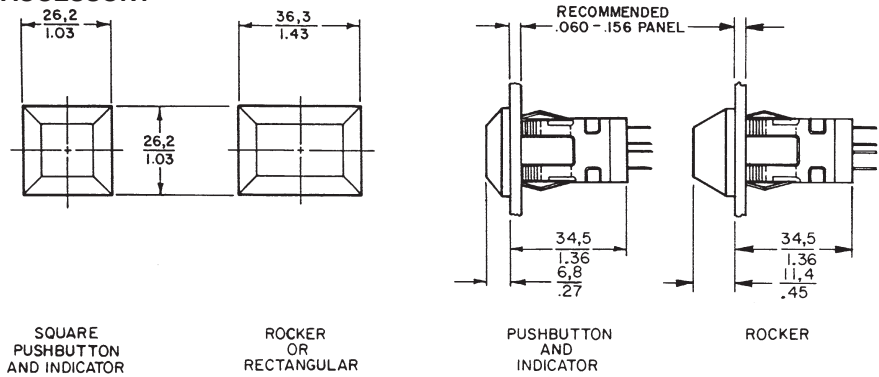


# Manual Switches

## Mounting Dimensions (For Reference Only)

AML Series

### AML75 PANEL SEAL ACCESSORY

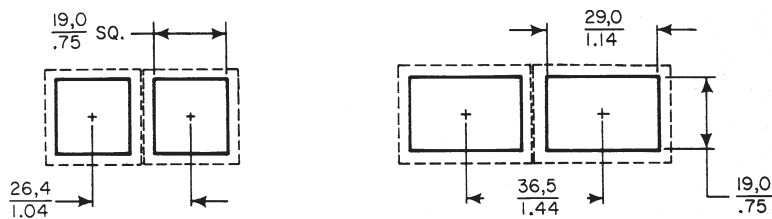


### Panel cutouts

Multiple panel sealed units should not be mounted together in a single elongated slot, since this would create an unsealed space between each unit.

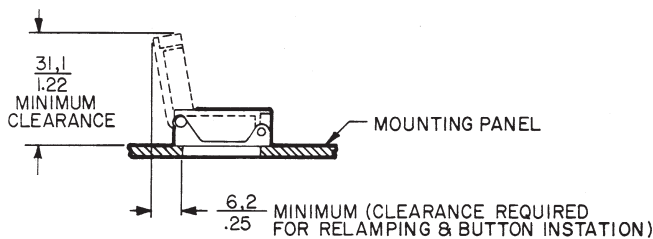
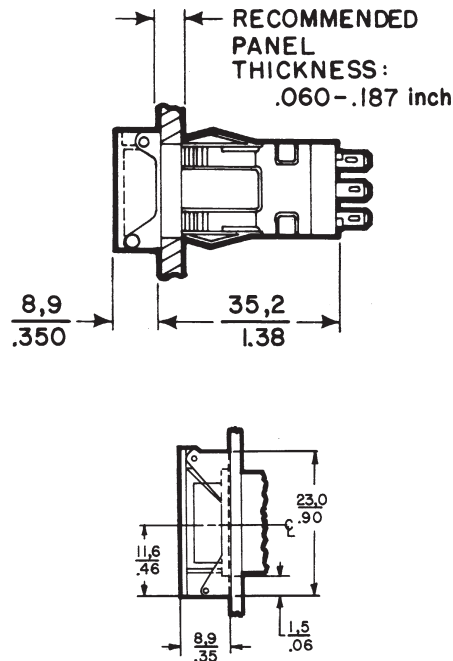
Side-by-side mounting can be achieved, per the center-to-center dimensions shown in the drawing. (Dotted lines indicate the seal bases which are abutting at front of panel.)

AML75 seals are not designed for use with the AML61 mounting system.

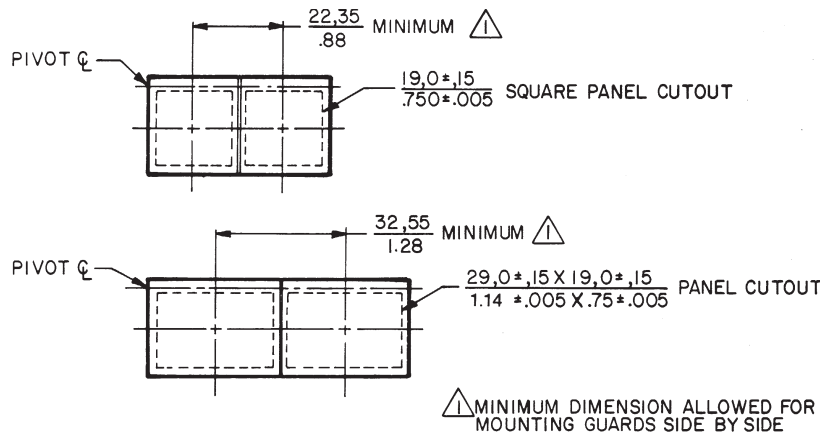


NOTE: Suggested cutout dimensions are based on an .125"/3,18 mm panel thickness. Individual preferences for inpanel fit may require measurement of assemblies before panels are cut.

### AML76 SWITCH GUARD ACCESSORY



### PANEL CUTOUTS



Manuals