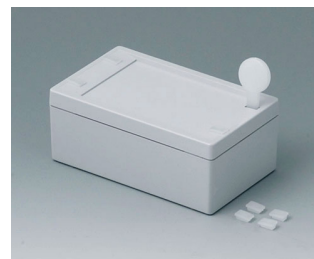
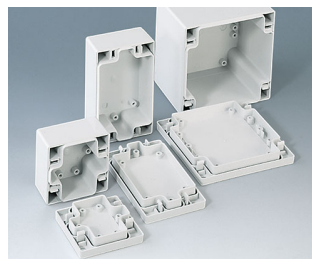


SNAPTEC

Fast assembly IP 65 plastic enclosures

These practical enclosures feature a rational snap-together assembly technique for faster installation of the electronics/electrical components.

- modern low cost wall mount enclosures
- snap-on lids for easier assembly
- high bottom parts guarantee maximum surface area for fitting cable glands and interfaces
- fast disassembly/servicing with opening tool or screw driver
- nylon opening tool and cover plugs for access holes included
- high protection class IP 65; sealing gasket pre-fitted in the top
- recess in the lid for a membrane keypad or label
- hidden screw shafts for easy wall mounting
- alternative external wall mounting brackets
- internal screw pillars for PCBs etc.



SNAPTEC

Applications and Examples

- Small devices with electro-technical components for low voltage, e.g. potentiometers, time controllers, coded control units etc.
- Or applications for low voltage with electro-mechanical components e.g. relays, under voltage no-close release, fuses etc. Also, medical and home automation systems.



Electromechanical door locking device



Robust UHF reader

View Customizing Options

What do you still need for your own very personal product? We can supply enclosures and tuning knobs with all necessary modifications for fitting your electronic components.

Customizing options for Snaptec



Machining



Lacquering



Printing



Laser marking



Decor foils



Special material



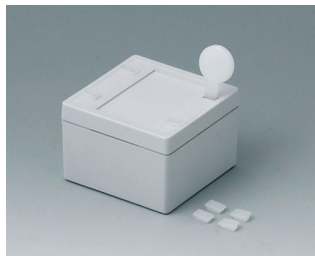
RFI/EMI shielding



Installation / Assembly
of accessories

SNAPTEC

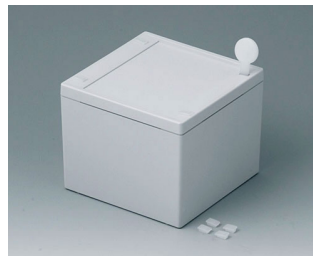
Select Versions



C3006061
SNAPTEC 2.362" x 2.362"
ABS (UL 94 HB)
light gray RAL 7035
2.36"x2.36"x1.57"
IP 65



C3006101
SNAPTEC 2.362" x 3.937"
ABS (UL 94 HB)
light gray RAL 7035
2.36"x3.94"x1.57"
IP 65



C3010101
SNAPTEC 3.937" x 3.937"
ABS (UL 94 HB)
light gray RAL 7035
3.94"x3.94"x3.15"
IP 65

Accessory "protection"



C2306917
Pressure equalization element
M6x0.030"
PA 6 (UL 94 HB)
light gray RAL 7035
IP 56



C2310917
Pressure equalization element
M10x0.039"
PA 6 (UL 94 HB)
light gray RAL 7035
IP 56



C2316147
Cable grommet
TPE
light gray RAL 7035
IP 67



C2320137
Cable grommet
EPDM
light gray RAL 7035
IP 67



C2320147
Cable grommet
TPE
light gray RAL 7035
IP 67



C2325147
Cable grommet
TPE
light gray RAL 7035
IP 67

SNAPTEC

Accessory "wall/holder"



C2299028
Wall mounting brackets
PA 6 (UL 94 HB)
light gray RAL 7035

Accessory "screws"



A0306031
Self-tapping screws 0.118" x
0.236" (PZ1)

Subject to technical modification without notice. © by OKW Gehäusesysteme, Buchen/Germany.