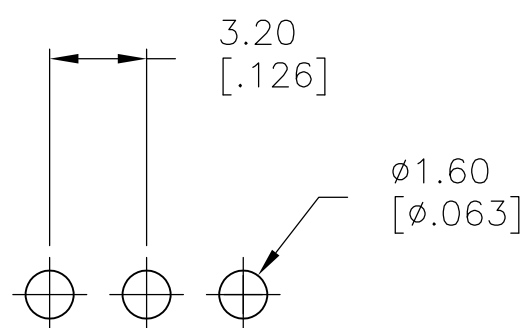
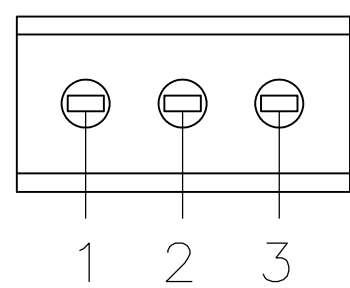
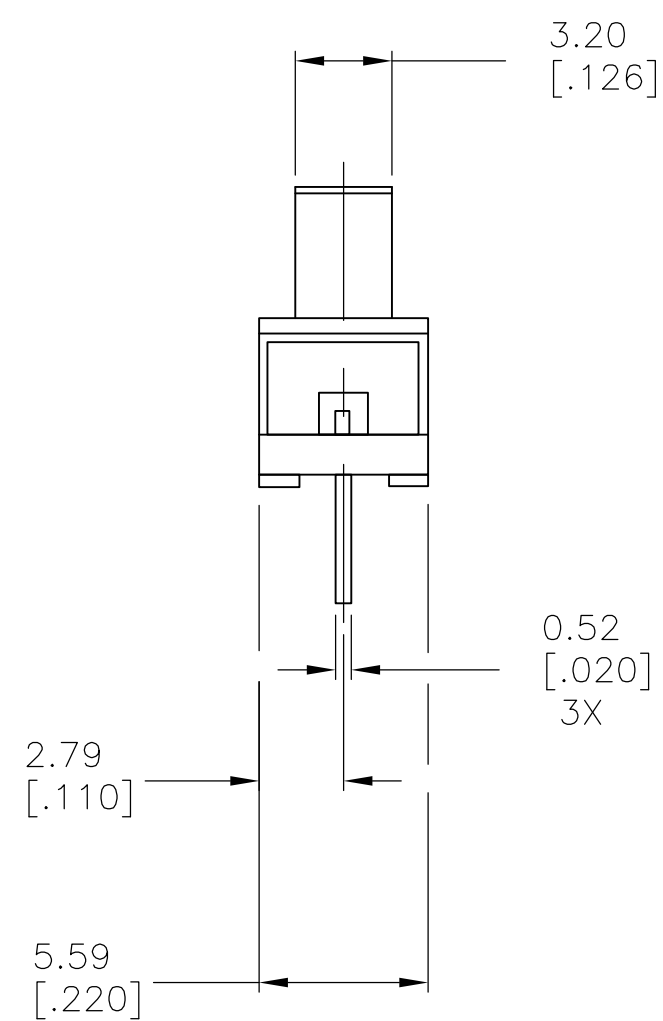
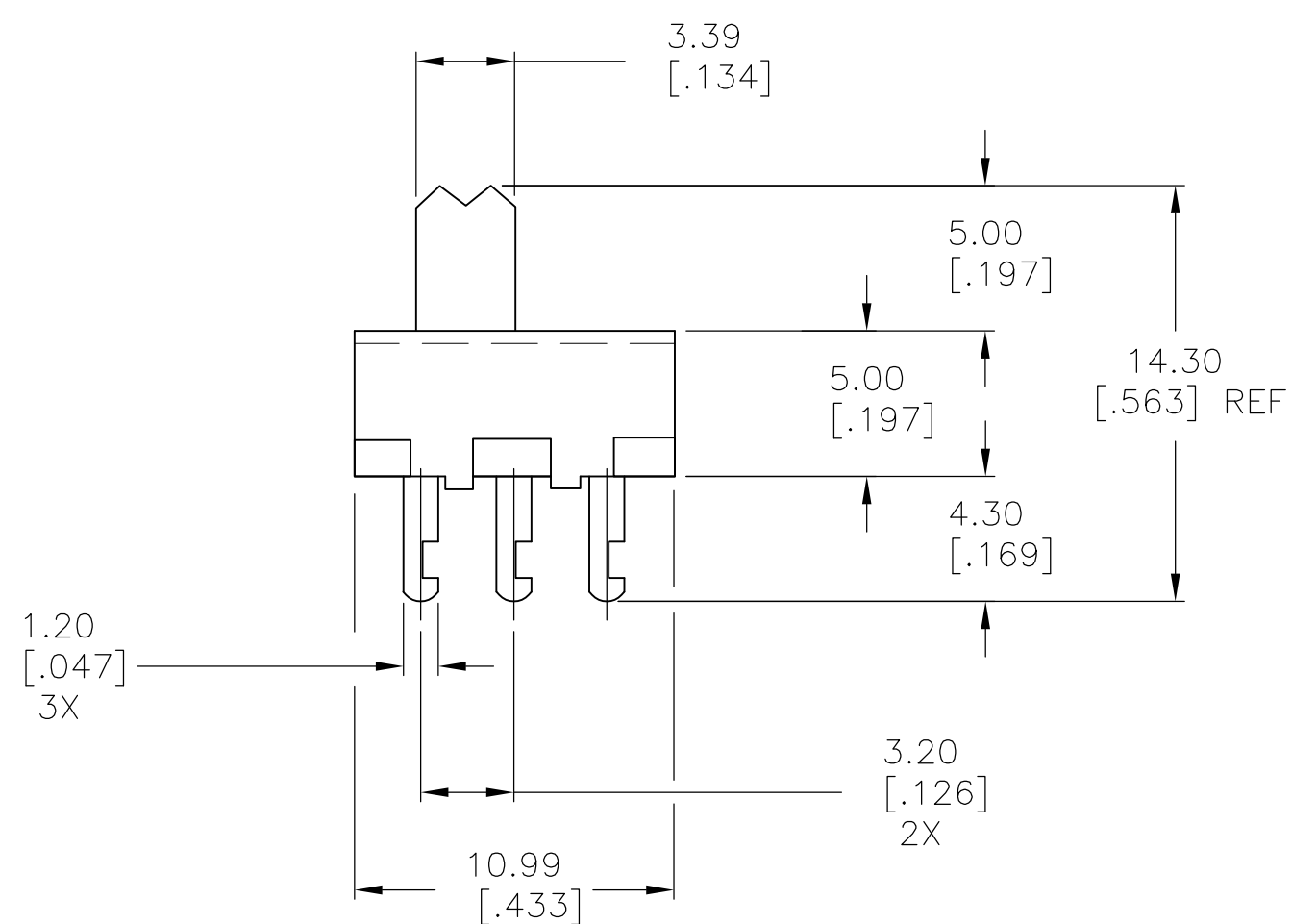
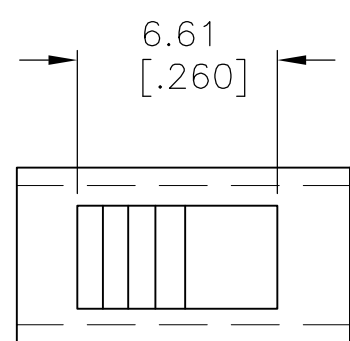


LOC	DIST	REVISIONS					
AD	00	P	LTR	DESCRIPTION	DATE	DWN	APVD
			A1	REVISED PER ECO-08-010892	05MAY08	HMR	SM



RECOMMENDED HOLE LAYOUT

SPECIFICATIONS:
BREAK-BEFORE-MAKE

MATERIALS:
FRAME- STEEL, ZINC PLATE
ACTUATOR- PBT G30, BLACK
FIXED CONTACT/TERMINAL- COPPER ALLOY, SILVER OVER NICKEL PLATE
MOVING CONTACT- COPPER ALLOY, SILVER OVER NICKEL PLATE
COIL SPRING- STEEL WIRE
TERMINAL BOARD- PHENOLIC, UL94HB

ELECTRICAL:
CONTACT RATING- 300 MILLIAMPS@125V AC
CONTACT RESISTANCE- 30 MILLIOHMS MAX (INITIAL),60 MILLIOHMS AFTER TEST
INSULATION RESISTANCE- 500 MEGOHMS MIN AT SEA LEVEL
DIELECTRIC STRENGTH- 500 VAC RMS AT SEA LEVEL
LIFE EXPECTANCY- 10,000 CYCLES MIN. NO LOAD & 6,000 MIN AT RATED

MECHANICAL:
ACTUATION FORCE- 350 +/-200 GRAMS
TRAVEL- .106 (2.69MM)

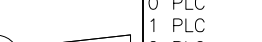
ENVIRONMENTAL:
OPERATING TEMPERATURE- -20 TO +85 DEGREES C
STORAGE TEMPERATURE- -40 TO +100 DEGREES C
RESISTANCE TO SOLDER HEAT- 260 C FOR 10 SEC PER 109-202, COND. B
SOLDERABILITY- PER EIA-364-56A, PROCEDURE 3, COND. B

NOTES:

1 ALL MATERIALS AND FINISHES SHALL COMPLY WITH EU DIRECTIVE 2002/95/EC
2002/95/EC OF 27JAN2003 (ROHS)

2 ALL PERFORMANCES SPECIFICATIONS WERE TESTED IN ACCORDANCE WITH JIS-C-5441
UNLESS OTHERWISE STATED.

1-2	2-3	SLS121104	1825077-1
LEFT	RIGHT	ALCO PART NUMBER	TE PART NUMBER
ACTUATOR	POSITION		

THIS DRAWING IS A CONTROLLED DOCUMENT.		DWN: B.S.VISWESWARA CHK: M.S.SARVER APPD: --		01MAR05 Tyco Electronics Tyco Electronics Corporation Harrisburg, PA 17105-3508	
DIMENSIONS: mm [INCHES]		TOLERANCES, UNLESS OTHERWISE SPECIFIED:		NAME	
		0 P.LC ± --		SLIDE SWITCH	
		1 P.LC ± --		(SLS-121-1)	
		2 P.LC ± --		SPDT W/O TABS	
		3 P.LC ± 0.25[.010]			
4 P.LC ± --		APPLICATION SPEC		SIZE CAGE CODE DRAWING NO	
ANGLES		WEIGHT		RESTRICTED TO	
FINISH		CUSTOMER DRAWING		A1 00779 C 1825077	
MATERIAL				SCALE 4:1 SHEET 1 of 1 REV A	

Mouser Electronics

Authorized Distributor

Click to View Pricing, Inventory, Delivery & Lifecycle Information:

[TE Connectivity:](#)

[SLS121104](#)