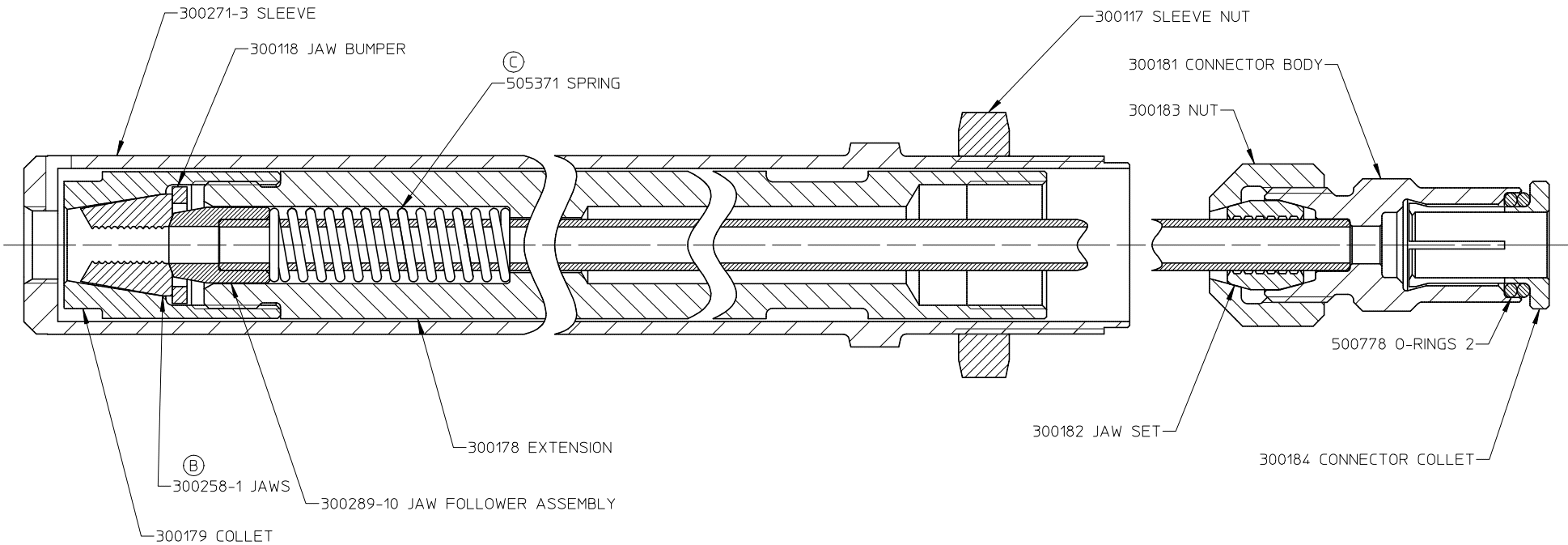


REV	DESCRIPTION	DATE
AA	RELEASE, FORMERLY EBBERT# 15541-H370-385AC-3C	9/20/01
B	300258-1 JAW WAS 300258 JAW	07/19/02
C	505371 WAS 500371	12/05/02



FORM: KE104 REV C		By accepting this proprietary Huck drawing, recipient agrees not to reproduce or disclose any part thereof to any others without the written permission of Huck International, Inc.							
MATERIAL:	-	SPEC:	TOLERANCES UNLESS OTHERWISE SPECIFIED: (ALL DIMENSIONS ARE IN INCHES)		HUCK INTERNATIONAL, INC., I.S.D. 1 CORPORATE DRIVE, P.O. BOX 2270 KINGSTON, NEW YORK 12401				
HARDNESS:	-	(RAW OR STOCKED STATE)							
HEAT TREAT TO:	-	SPEC:	.XX, .XXX ±	.01, .005	PULLING HEAD ASSEMBLY				
SURFACE TREAT:	-	SPEC:	INT. COR. RADII	.005-.015					
SURFACE FINISH NOT TO EXCEED: 125 Ra			BREAK EDGES		.005-.015	DET: CHR	CK:	DATE: 9/20/01	SCALE: 2/1
IDENTIFICATION PER SPEC 42-311: ★ PERMANENT			ANGLES ±		3°	FOC.	B	PH3F51	
SURFACES TO BE ☉, //, ⊕, ⊥, & ▽ WITHIN .005 T.I.R.			FINAL ASSY:			FAC.			