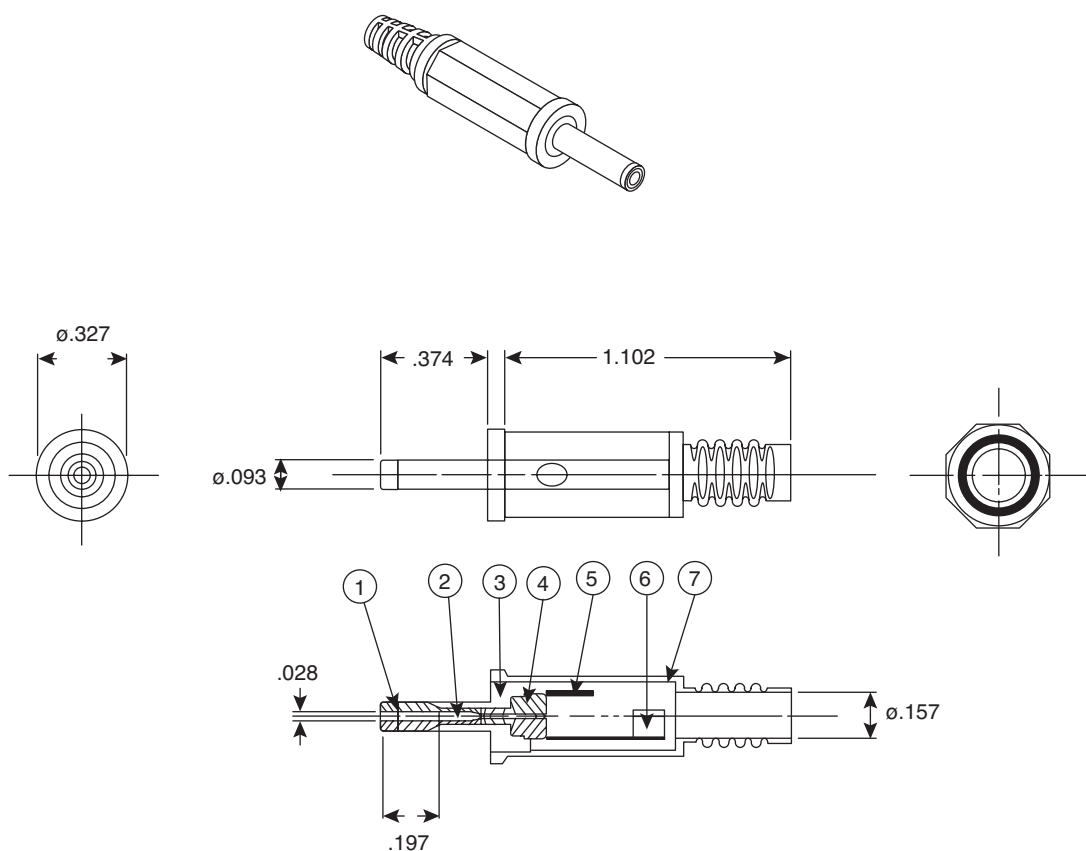


# DC Power Plug

171-3218-EX

KOBICONN

DC Power Plug



Dimensions: In.

SPECIFICATIONS	
Color:	Black
RoHS Compliant by Exemption	

MATERIALS		
Part No.	Part Name	Material
1	Insulator A	POM
2	Sleeve Metal	Nickel Plated Brass
3	Center Terminal	Nickel Plated Brass
4	Metal Ring	Nickel Plated Brass
5	Insulator B	POM
6	Terminal	Nickel Plated Brass
7	Cap	PP

Date Last Revised: 12-9-05

Available from Mouser Electronics  
1-800-346-6873  
www.mouser.com

KC-300908

171-3218-EX

# Mouser Electronics

Authorized Distributor

Click to View Pricing, Inventory, Delivery & Lifecycle Information:

[Kobiconn:](#)

[171-3218-EX](#)