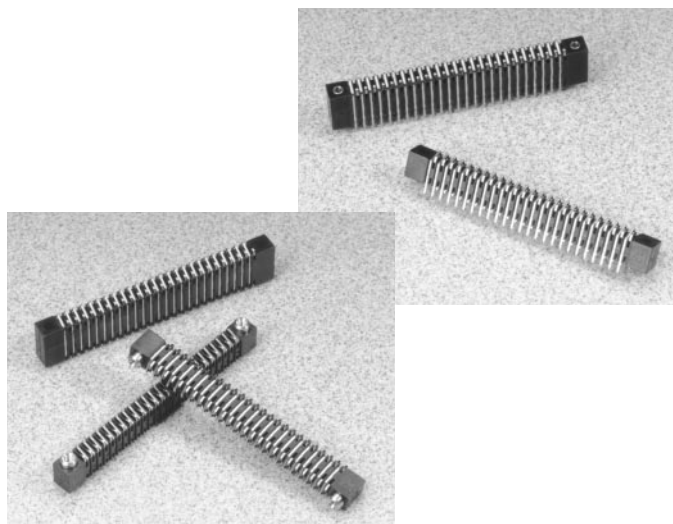


.050" (1.27mm) Series 501 & 503 Compression/Stacking Connector



Features and Benefits

- Combine board standoff function with parallel board interconnect function
- Connects two or more stacked/surface mount boards
- Optional polarizing mounting hardware is available (threaded and thru-hole)
- Various contact platings are available
- Optional board stiffeners are recommended in some applications

Specifications

- See general specifications page 3

PART NUMBER CODING

50X-X1-XXXX-XX-XXX

CONTACT PLATING

CONTACT SURFACE — TERMINATION

23 = .000030 — TIN/LEAD
41 = .000200 - TIN/LEAD
103 = .000030 GOLD
ALL GOLD OVER .000050 NICKEL
FOR OTHER PLATING CONSULT FACTORY

STD. MOUNTING STYLE/HARDWARE

SEE SURFACE MATE MOUNTING HARDWARE
PAGE 12

TERMINATION STYLE

SM = SURFACE MOUNT (SOLDERLESS
COMPRESSION)
DS1 = DIP SOLDER (.100 LONG)
DS2 = DIP SOLDER (.125 LONG)

NUMBER OF CONTACTS

SINGLE ROW .100 (2.54) CENTERS
21 STANDARD
25 STANDARD
DUAL ROW .050 (1.27) CENTERS
42 STANDARD
50 STANDARD

INSULATOR MATERIAL

1 = POLYESTER, BLACK

NUMBER OF ROWS

1 = 1 ROW (.100 CENTERS)
2 = 2 ROWS (.050 CENTERS)

SURFACE MATE (SURFACE MOUNT)

501 = .325 HIGH INSULATOR
503 = .538 HIGH INSULATOR
(CONSULT FACTORY FOR AVAILABILITY OF
ADDITIONAL INSULATOR HEIGHTS)

Board Stiffeners



Features & Benefits

- Board stiffeners are recommended when assembling PCBs less than .062 thick
- Molded of glass filled PPS for strength and stability
- Temperature rated up to 150°C
- Available in 42 and 50 positions
- Metal Stiffeners are offered. Consult factory for availability

**Used with 500, 501 and 503 Series*

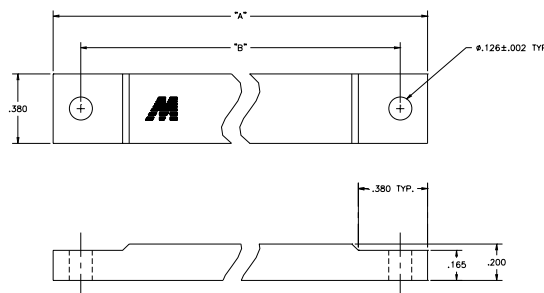
PART NUMBER CODING

186-1269-XX

DIMENSIONS

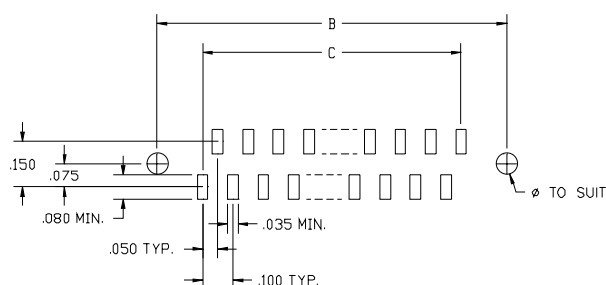
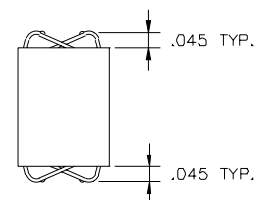
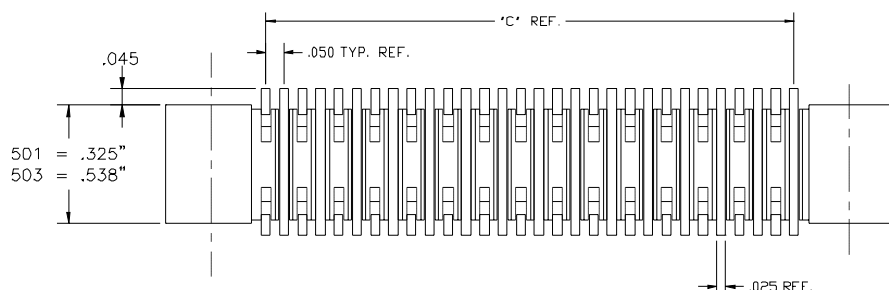
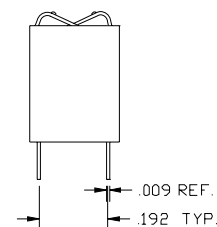
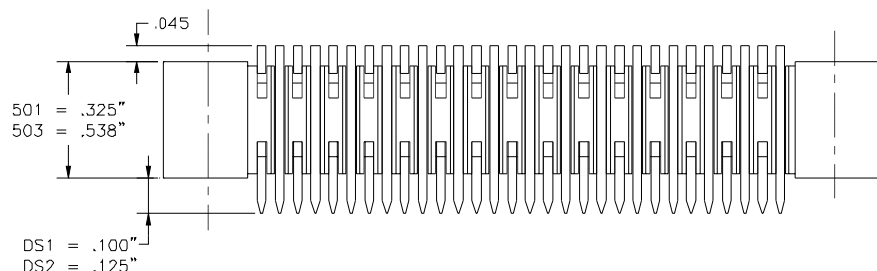
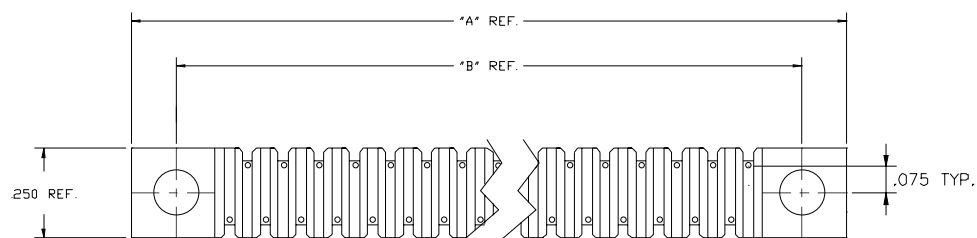
CONTACT	"A"	"B"
42	2.650	2.350
50	3.050	2.750

MATERIAL: POLYPHENYLENE SULFIDE (94 V-0) BLACK

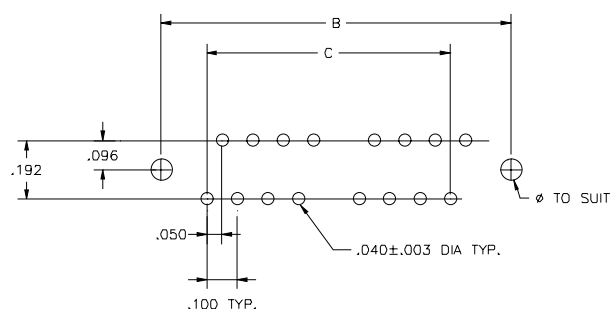


**Consult factory for availability*

.050" (1.27mm) Series 501 & 503 Compression/Stacking Connector



RECOMMENDED PAD LAYOUT
SURFACE MOUNT (SOLDERLESS COMPRESSION)



RECOMMENDED PIN LAYOUT
DIP SOLDER

50	3.000	2.750	2.450
46	2.600	2.350	2.050
SIZE	A	B	C
DIMENSIONS			