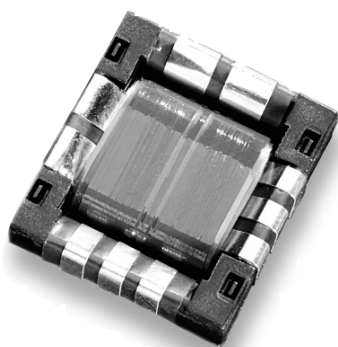





PGF POWER TRANSFORMERS

High Power, Low Profile, High Frequency

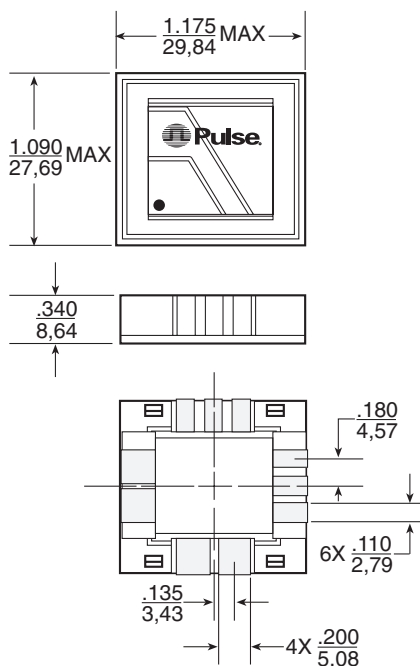


-  Switchmode power transformers
-  26 Amp current capability
-  Surface mount

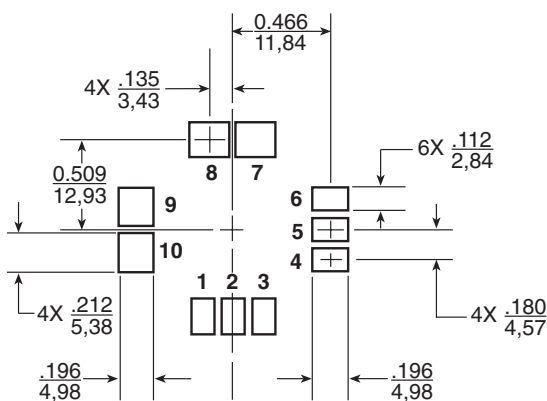
Electrical Specifications @ 25°C — Operating Temperature -20°C to 85°C

Part Number	Input Voltage	Turns Ratio (1-6:2-5:3-4 7-10:8-9)	Output Power	Operating Frequency	Primary Inductance (1-6, 3-4) NOM	DCR (Ω MAX)				Leakage Inductance (1-6, 3-4) NOM
						(1-6,3-4)	(2-5)	(7-10)	(8-9)	
PE-68471	18-72 Vdc	5:5:5:4	130 W	200-400 KHz	45 μH	.0071	.060	.0036	—	.07 μH
PE-68472	18-72 Vdc	5:5:5:5:5	140 W	200-400 KHz	45 μH	.0072	.065	.010	.010	.07 μH

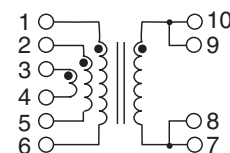
Mechanical



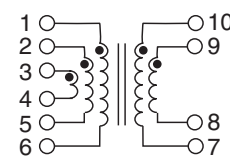
Footprint



Schematics



PE-68471



PE-68472

Dimensions: $\frac{\text{Inches}}{\text{mm}}$

Unless otherwise specified, all tolerances are $\pm .010$
 $0,25$

Application Note

Both of these transformers were designed to handle high switching current at high frequencies. Overall height is 330 mils \pm 10 mils depending upon the number of turns. PGF transformers are capable of handling switch times up to 1MHz at high power loads. The third winding can be used as a bias supply.

The transformers are designed for surface mount applications. Pulse also produces two companion power inductors (found in the Power Inductor Catalog – PC503) designed to compliment them in DC/DC converter applications. These transformers are packaged in trays for convenient handling.

***NOTE:** Specifications are tabulated for a single-ended forward (SEF) converter application with convection cooling. Bridge converter and heatsinked applications provide higher power capability.