

# KSM Series

## Side Actuated Detect Switches

### Features/Benefits

- Low profile – 1,5 mm
- Momentary, normally closed contact
- Thermo-formed tape & reel
- RoHS compliant and compatible

### Typical Applications

- Automotive
- Position sensing switch
- Edge card reset switch
- Smart card presence switch detector
- DSL and fiber optic networks



### Specifications

FUNCTION: Momentary action

CONTACT TYPE: SPST Normally closed

#### Mechanical

TRAVEL TO BREAK: KSM1131D 0,35 ± 0,15 mm

KSM6161 0,5 ± 0,20 mm

TOTAL TRAVEL: KSM1131D 1,25 ± 0,2 mm

KSM6161 1,92 ± 0,2 mm

FORCE AT MAXIMUM TRAVEL:

KSM1131D 1.05N < Fa < 1,45N

KSM6161 0.99 < Fa < 1,34 N

OPERATING LIFE: KSM1131D 50,000 cycles

KSM6161 200,000 cycles

#### Packaging

Switches are delivered on continuous tape, in reels of 2,000 pieces (KSM1131D) and 1250 pieces (KSM6161)

### Electrical

MAXIMUM POWER: 1.0 VA (KSM6161) / 0.2 VA (KSM1131D)

MAXIMUM VOLTAGE: 32 VDC

MINIMUM VOLTAGE: 20 mV

MAXIMUM CURRENT DC: 50 mA

MINIMUM CURRENT DC: 1 mA

CONTACT RESISTANCE: ≤ 900 mΩ (KSM6161) / 300 mΩ(KSM1131D)

INSULATION RESISTANCE: ≥ 10<sup>9</sup> Ω

DIELECTRIC STRENGTH: ≥ 250 Vrms

BOUNCE TIME: ≤ 3 ms (KSM6161) / 1,25 ms (KSM1131D)

### Environmental

OPERATING TEMPERATURE: -40°C to +85°C

STORAGE TEMPERATURE: -55°C to +85°C

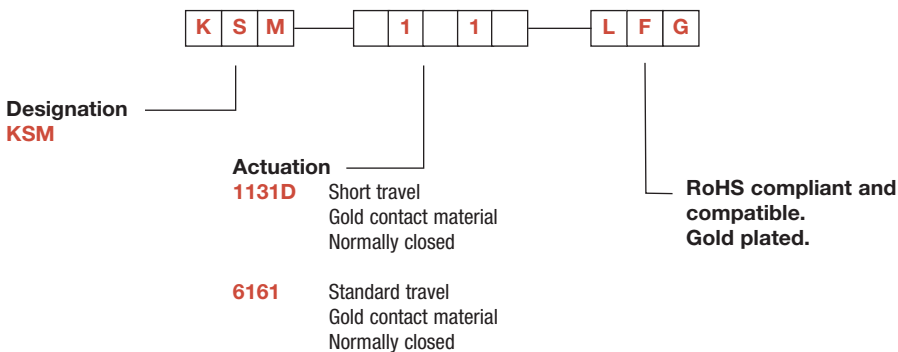
### Process

SOLDERING: Compatible with lead free reflow process

**NOTE:** Specifications listed above are for switches with standard options. For information on specific and custom switches, consult Customer Service Center.

### Build-A-Switch

To order, simply select desired option from each category and place in the appropriate box. Available options are shown and described on page E-20. For additional options not shown in catalog, consult our Customer Service Center.



Detect

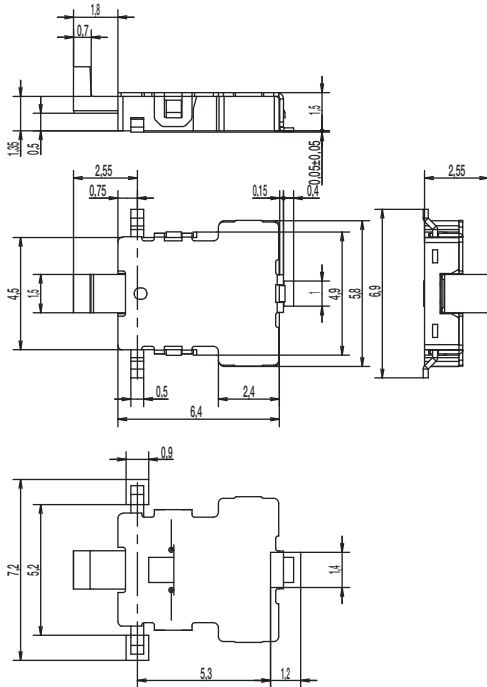


Dimensions are shown: mm  
Specifications and dimensions subject to change

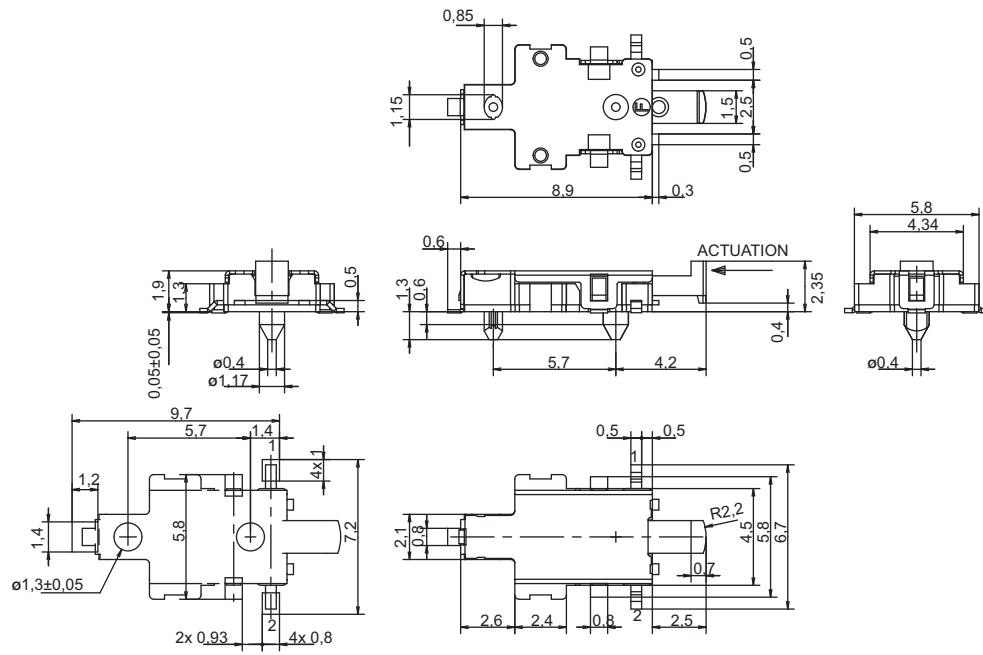
# KSM Series

## Side Actuated Detect Switches

### KSM1131D

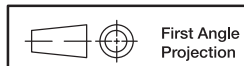


### KSM6161



  
**Detect**

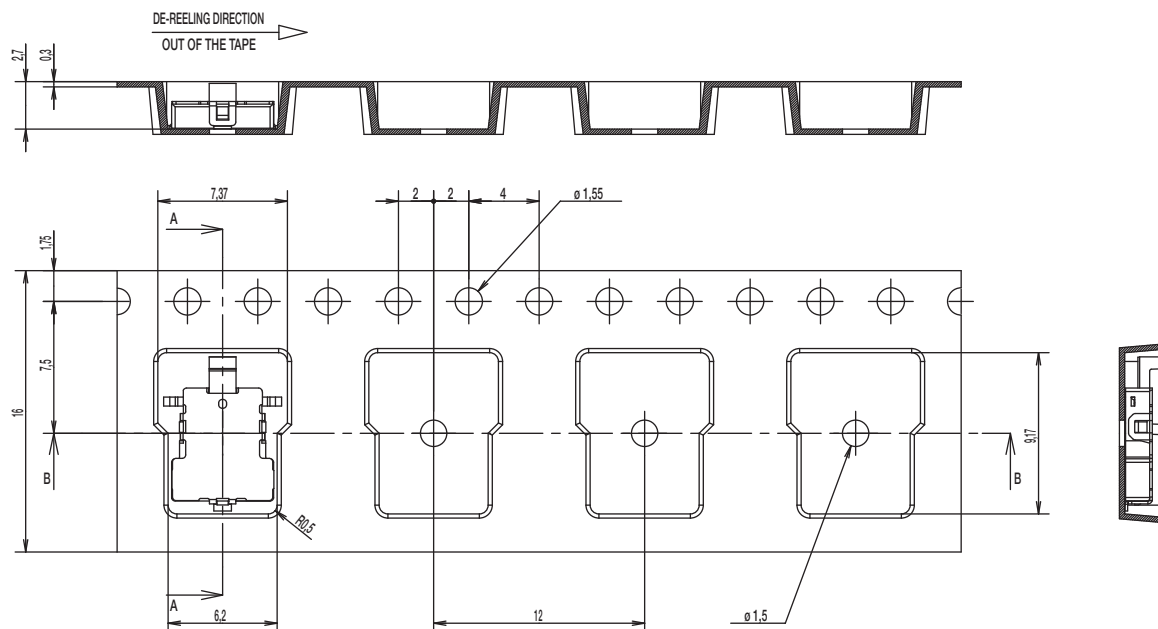


Dimensions are shown: mm  
 Specifications and dimensions subject to change

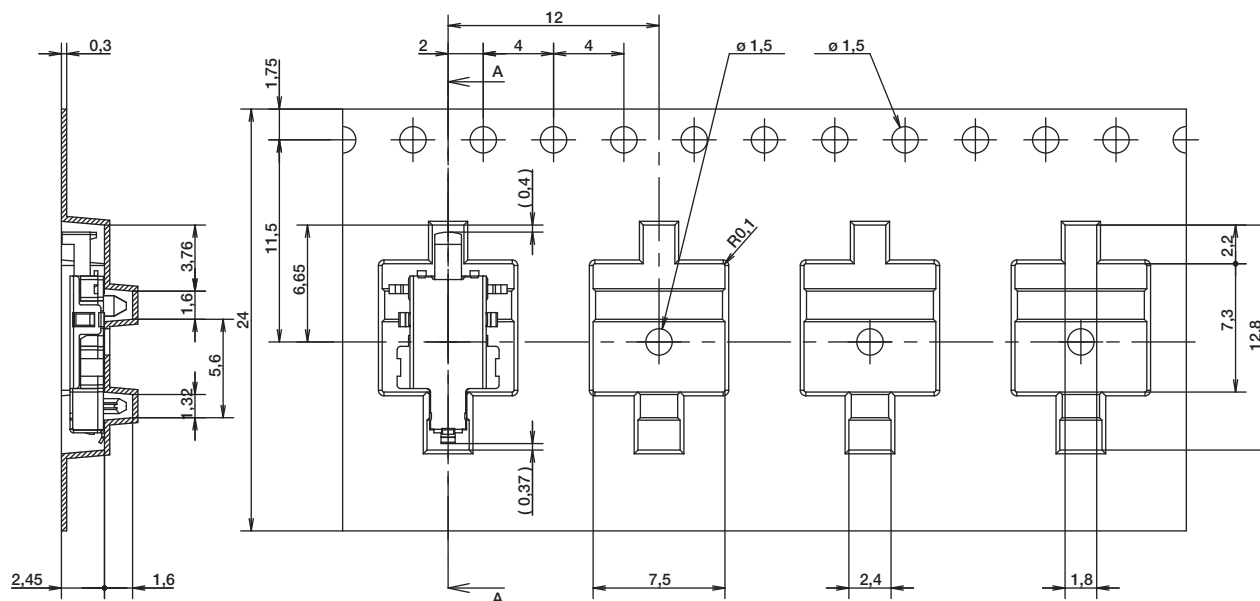
# KSM Series Side Actuated Detect Switches

## TAPE & REEL

### KSM1131D



### KSM6161



E

Detect



First Angle  
Projection

Dimensions are shown: mm  
Specifications and dimensions subject to change

**C&K**

# Mouser Electronics

Authorized Distributor

Click to View Pricing, Inventory, Delivery & Lifecycle Information:

C&K Components:

[KSM6161LFG](#)