

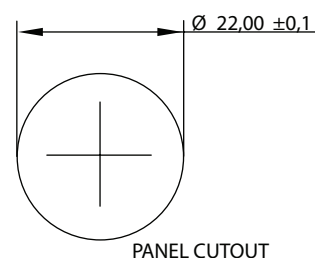
Q-SERIES 22mmØ Panel Mounting LED Indicator

Product Specification

Distinctive Features and Specifications

- 22mm panel mounting LED indicator
- 18mm coloured diffused epoxy lens
- Bright chrome, black chrome and satin grey, plated brass bezel finish
- Bright chrome, satin grey, gold and black ABS plastic bezel finish
- Prominent and flush bezel styles
- 5.5VDC – 220VAC
- (2.8 x 0.8) terminals, pins or (200mm long) wire terminations
- IP67 sealing option (EN60529)
- Supplied with fixing nut and spring washer

NB: UL Recognised Component



TECHNICAL SPECIFICATIONS

| Switch Voltage | Operating Voltage Vop (Min to Max) | Operating Current Iop (Typical All Types) |
|----------------------|---------------------------------------|--|
| 5.5VDC (No Resistor) | 5.0 to 6.0VDC | 20mA |
| 12VDC | 10.8 to 13.2VDC | 20mA |
| 24VDC | 21.6 to 26.4VDC | 20mA |
| 28VDC | 25.2 to 30.8VDC | 20mA |
| 110VAC | 99 to 121VDC | 6mA |
| 230VAC | 207 to 253VDC | 3mA |

| Intensity (Typical) at Iop Standard | Prominent (all voltages) | Flush (all voltages) | Forward Voltage |
|---|-----------------------------|-------------------------|-----------------|
| HE Red | 80mcd | 70mcd | 5.7V |
| Green | 95mcd | 70mcd | 5.9V |
| Yellow | 60mcd | 60mcd | 5.9V |
| Blue | 120mcd | 100mcd | 9.9V |
| White | 350mcd | 200mcd | 3.6V |
| Bi-colour (Typical) (Red/Green) | 80/50mcd | 80/50mcd | 2.0V/2.2V |
| Tri-colour (Typical) (Red/Green/Yellow) | 80/50/50mcd | 80/50/50mcd | 2.0V/2.2V/2.1V |

Bi-colour - The colour is changed by reversing the polarity of the supply voltage.

Tri-colour - The indicator has red and green LEDs, when both connected yellow is produced.

Luminous intensity will be reduced with lower operating current.

For super bright versions please consult APEM

Max Reverse Voltage: 5V

Viewing Angle: 100° (dependant on model)

Life Expectancy: 100,000 hours

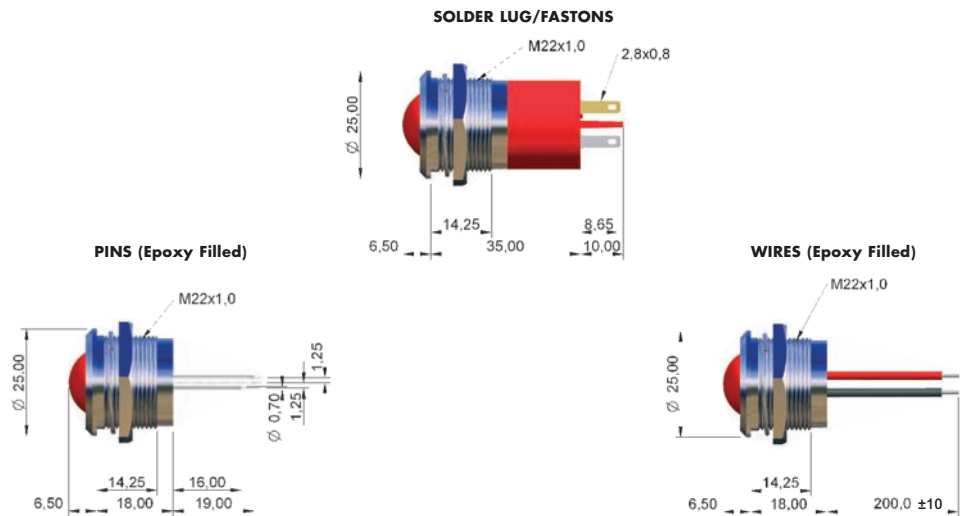
Operating Temperature Range: -40 to +85°C

Note: The operating voltage must not be exceeded by more than 10% as this will result in reduced life expectancy.
The company reserves the right to change specifications without notice.

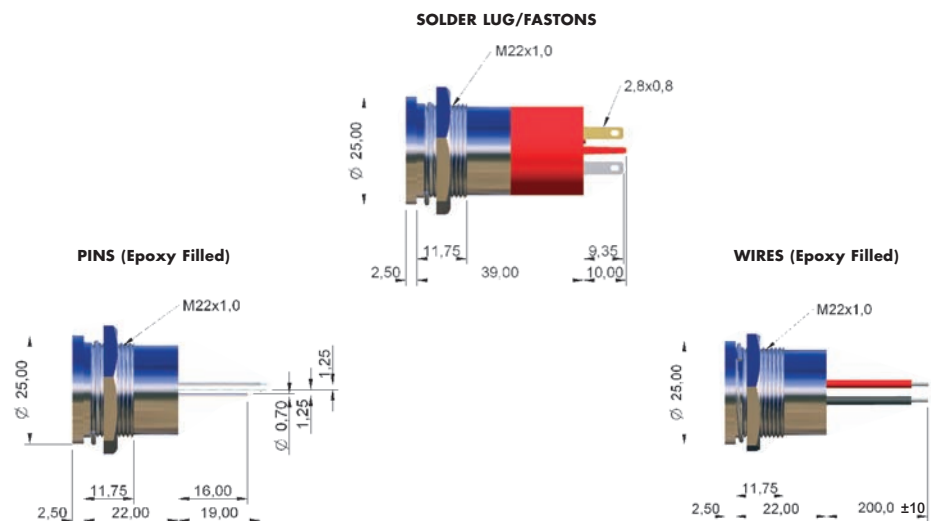
Q-SERIES 22mmØ Panel Mounting LED Indicator

Technical Drawings

PROMINENT BEZEL



FLUSH BEZEL



Note: The company reserves the right to change specifications without notice.

Q-SERIES 22mmØ Panel Mounting LED Indicator

Ordering Overview

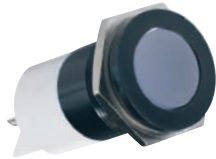
STANDARD OPTIONS

The Q22 Series is available with a range of standard options, to specify your LED, simply choose one option from each column. An example is shown below.

| Q | 22 | F | 1 | BP | XX | W | 28 | E | DL |
|--------|---------------|--|--|---|---|---|---|--------------------------------|------------------------------------|
| SERIES | MOUNTING HOLE | BEZEL STYLE | TERMINALS | BEZEL FINISH | TYPE OF ILLUMINATION | LED COLOUR | VOLTAGE | SEALING | OPTIONS |
| Q | 22 = Ø22mm | Metal P = Prominent F = Flush Plastic PP = Prominent FP = Flush | 1 = Solder Lugs/Fastons (2.8 x 0.8) 4 = Pins 5 = Wires | Metal C = Bright Chrome B = Black Chrome G = Satin Grey Plastic CP = Bright Chrome BP = Black GP = Satin Grey AU = Gold | XX = Fixed Light KK = Flashing Light (only up to 28VDC) YY = Bi-colour ZZ = Tri-colour | R = Red G = Green Y = Yellow B = Blue W = White SR = Super Bright Red SG = Super Bright Green SY = Super Bright Yellow RG = Red/Green RY = Red/Yellow GY = Green/Yellow RYG = Red/Yellow/Green | O5 = 5VDC 12 = 12VDC 12A = 12VAC/DC 24 = 24VDC 24A = 24VAC/DC 28 = 28VDC 28A = 28VAC/DC 110 = 110VAC 220 = 220VAC | (Blank) = Unsealed E = IP67 | DL = Daisy Chain IT = Lamp Test |

Example Q22F1BPXXW28EDL

Ø22mm, flush bezel, solder lug terminals, black plastic finish, fixed light, white, 28volt DC LED, IP67 Panel Seal, Daisy Chain



- Gold Faston terminal denotes Anode (+), silver terminal denotes Cathode (-)
- Standard wire length is 200mm, 22AWG, red wire denotes Anode (+), black wire denotes Cathode (-) for other wire lengths consult APEM
- For LEDs with alternate voltages consult APEM
- Bi-colour LEDs, by connecting the gold Faston (+) one colour is produced, by reversing the supply voltage another colour is produced – Bi-colours are available up to 28VDC
- Take care when soldering to the Faston terminals
- Pin and Wire options are epoxy sealed at the rear of the bezels
- The Tri-colour LED has red and green LEDs when both are connected yellow is produced
- Standard Tri-colour Faston terminals are two Anodes (+) and one Cathode (-)
- Tri-colour wires are one red (+) and one green (+) Anode and one black (-) Cathode
- Tri-colour pins are centre (-) cathode, shortest (+) anode pin green, longest (+) anode pin red
- Maximum panel thickness: Prominent = 12mm, Flush = 10mm
- Plastic bezel material: ABS
- Daisy chaining option - has negative (Cathode) terminals linked (3 x Fastons), solder lugs only
- Lamp test facility option (4 x Faston), solder lugs only
- We recommend using Superbright LEDs for use at 220VAC