

### SPECIFICATIONS

**Material:** E-SEELS:Silicone rubber polymer type ASTM D1418

**Mounting Nut:** E-SEELS: Brass, black-oxide

**Temperature Range:** E-SEELS: -80°F to +400°F

**Pressure Range:** Exceeds 15 psi internal and 1500 psi external.

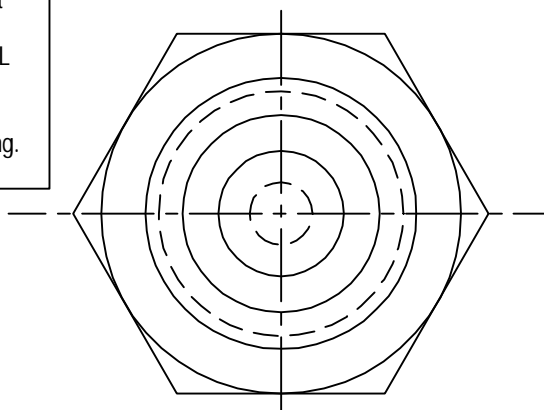
**Operational Life:** 50,000 actuations (minimum).

**Shelf Life:** Excess of 25 years.

**Resistant to:** Salt spray, sunlight, ozone, weather, fungus and most acids and lubricating oils

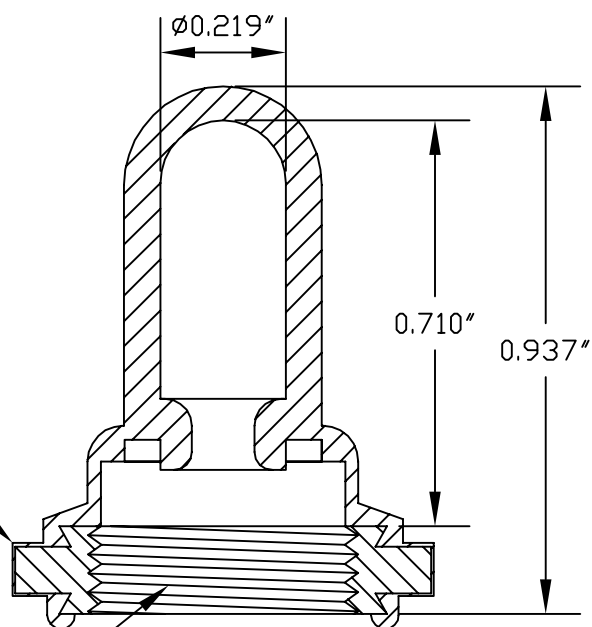
**Agency Recognition:** E-SEELS and HEXSEALS are UL-listed to UL Std. 50 types 1-13, and meet CSA standards.

**Installation:** If a reducing adaptor is required- see page 14 of HEXSEAL catalog HEX200 for part numbers and drawing.



PERMISSIBLE RUBBER  
OVERLAY 0.005 MAX.

15/32-32NS-2B



B	CAD COMPUTER GENERATED				09.19.02	
A	MODIFIED				11.16.74	
REV.	DESCRIPTION				DATE	
MAXIMUM AND MINIMUM MEASUREMENTS ARE STATED DIRECTLY ON EACH DIMENSION.		TITLE:	BOOT, TOGGLE, TOTALLY ENCLOSING (C1131/27)		ENG.	
					DWN.	S. ANDREWS
MAT'L: SILICONE RUBBER PER ASTM D 1418			CHKD.	J. CELLA	07.08.09	
FINISH: BLACK			APM-HEXSEAL CORPORATION		SCALE	DWG. NO.
					3 : 1	

THIS DRAWING COVERS PROPRIETARY ITEM AND IS THE PROPERTY OF THE APM-HEXSEAL CORPORATION.  
THIS DRAWING IS NOT TO BE COPIED OR USED WITHOUT THE WRITTEN APPROVAL OF AN OFFICER OF THE APM-HEXSEAL CORPORATION.

# Mouser Electronics

Authorized Distributor

Click to View Pricing, Inventory, Delivery & Lifecycle Information:

[APM HEXSEAL:](#)

[C1131/27 Circuit breaker](#)