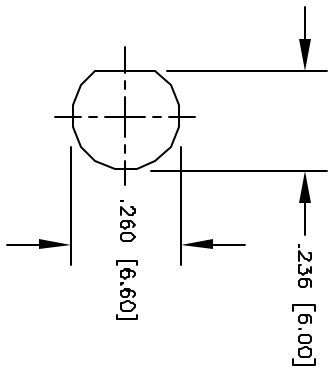
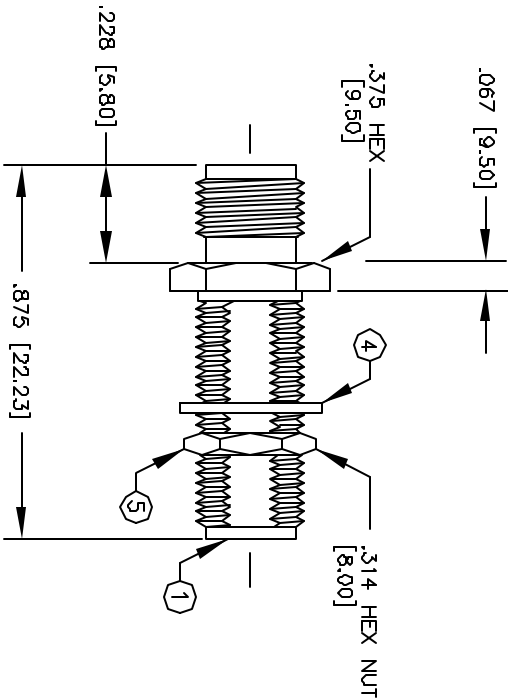


REVISIONS					DOC. NO. SPC-FD05, Total Pages: 2 Effective: 3/3/97, DCP No: 103 Supersedes DCP No: 97			
DCP #	REV	DESCRIPTION	DRAWN	DATE	CHECKD	DATE	APPRVD	DATE
18	A	RELEASED	D.J.C.	4/2/97	J.C.	4/8/97	B.B.	4/18/97
428	B	CHANGE ELECTRONIC FILE NAME	DJC	2/12/98	JC	2/17/98	JC	2/17/98



SUGGESTED MOUNTING CONFIGURATION
.251 [6.40] MAXIMUM PANEL THICKNESS

SPECIFICATIONS:

IMPEDANCE: 50 OHMS
WORKING VOLTAGE: 335 VRMS @ SEA LEVEL
FREQUENCY RANGE: 0-12.4 GHz

5	HEX NUT	1	BRASS	GOLD
4	LOCK WASHER	1	BRASS	GOLD
3	DIELECTRIC	2	TEFLON	NONE
2	CONTACT	1	BERYLLIUM COPPER	GOLD
1	BODY	1	BRASS	GOLD
ITEM	DESCRIPTION	QTY	MATERIAL	FINISH

DISCLAIMER
ALL STATEMENTS AND TECHNICAL INFORMATION CONTAINED HEREIN ARE BASED UPON INFORMATION AND/OR TESTS WE BELIEVE TO BE ACCURATE AND RELIABLE. SINCE CONDITIONS OF USE ARE BEYOND OUR CONTROL, THE USER SHALL DETERMINE THE SUITABILITY OF THE PRODUCT FOR THE INTENDED USE AND ASSUME ALL RISK AND LIABILITY WHATSOEVER IN CONNECTION THEREWITH.



DIMENSIONS ARE FOR REFERENCE PURPOSES ONLY.		DRAWN BY:	DATE:	DRAWING TITLE:				
		DANIEL CAREY	4/2/97	SMA FEMALE TO SMA FEMALE BULKHEAD ADAPTER				
		CHECKED BY:	DATE:	SIZE	DWG. NO.	CAD FILE		REV
		JOHN COLE	4/8/97	A	8589-0853	16N2735.DWG		B
		APPROVED BY:	DATE:	SCALE:	NTS	U.O.M.: INCHES [mm]	SHEET:	1 OF 1
		BRETT BRAATZ	4/16/97					
SPC-FD05.DWG								