

DO NOT
SCALE FROM
THIS PRINT

ITEM	COMPONENT	-HF	-GF
1	SHELL	GRF7V-J-P-F-ST-TH1-SHL	
2	SOCKET	GRF7-J-P-H-ST-TH1-SKT	GRF7-J-P-G-ST-TH1-SKT
3	INSULATOR	GRF7-J-P-ST-INS	

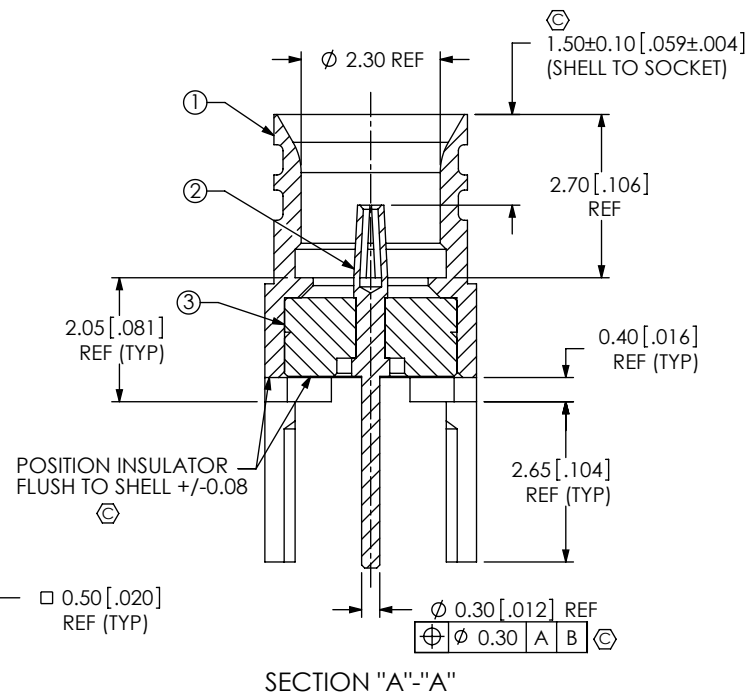
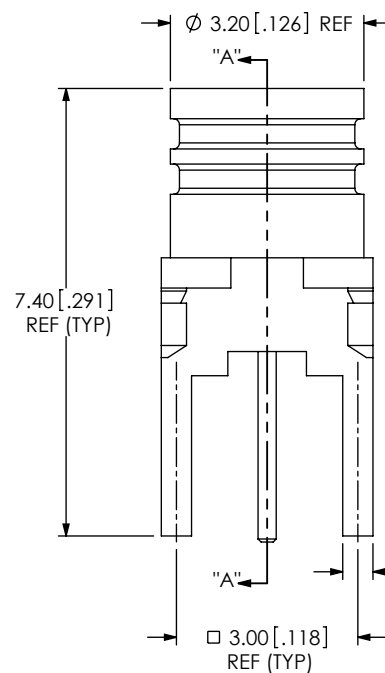
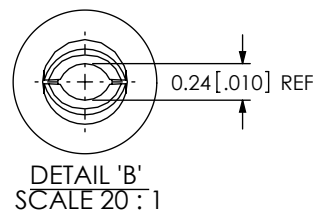
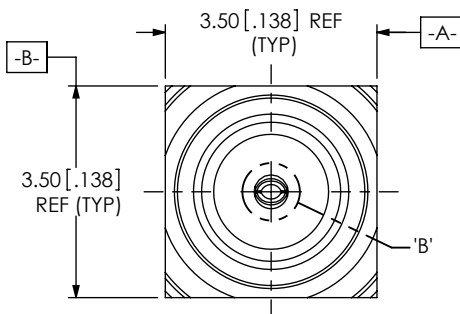


FIG 1
MMCX7-J-P-XX-ST-TH1-ASM SHOWN

MMCX7-J-P-XX-ST-TH1

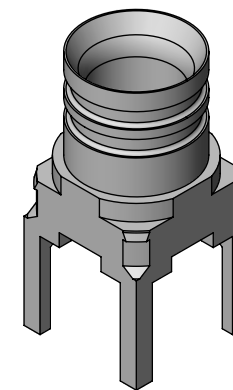
—TERMINATION
-TH1: THROUGH HOLE

GENDER:
-J: JACK

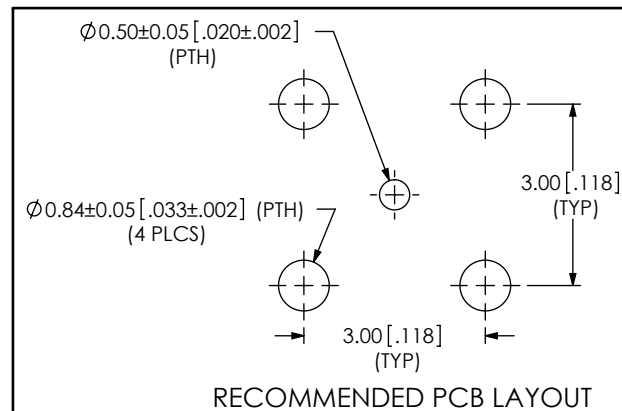
— ORIENTATION
-ST: STRAIGHT

TYPE—
-P: PCB


— PLATING SPECIFICATION
 -HF: 30μ" GOLD CENTER CONTACT,
 3μ" GOLD OUTER CONTACT
 -GF: 10μ" GOLD CENTER CONTACT,
 3μ" GOLD OUTER CONTACT
 (SEE TABLE 1)



MMCX7-J-P-XX-ST-TH1-ASM SHOWN



NOTES:

1.  REPRESENTS A CRITICAL DIMENSION.
 2. MINIMUM PUSHOUT FORCE FOR INSULATOR: 22.24N [5.0 LBS].
 3. MINIMUM PUSHOUT FORCE FOR CENTER CONTACT: 11.12N [2.5 LBS].
 4. PRODUCT TO BE PACKAGED PER PACKING STANDARD CO-HD-WI-3040-M.
- TRAY: TY-SMA001-1
COVER: TY-SMA001-2
200 PARTS PER TRAY (2 PARTS PER POCKET)

C:\EnterpriseVault\DWG\MISC\MKTG\MMCX7-J-P-XX-ST-TH1-MKT.SLDDRW

UNLESS OTHERWISE SPECIFIED,
DIMENSIONS ARE IN
MILLIMETERS [INCHES].

TOLERANCES ARE:
 DECIMALS ANGLES
 X.X: ± 0.3 [.01] 5°
 X.XX: ± 0.13 [.005]
 X.XXX: ± 0.051 [.0020]

MATERIAL: DO
SHELL: BRASS
SOCKET: BeCu
INSULATOR: PTFE

PROPRIETARY NOTE

THIS DOCUMENT CONTAINS INFORMATION
CONFIDENTIAL AND PROPRIETARY TO
SAMTEC, INC. AND SHALL NOT BE REPRODUCED
OR TRANSFERRED TO OTHER DOCUMENTS OR
DISCLOSED TO OTHERS OR USED FOR ANY
PURPOSE OTHER THAN THAT WHICH IT WAS
OBTAINED WITHOUT THE EXPRESSED WRITTEN
CONSENT OF SAMTEC, INC.

DO NOT SCALE DRAWING

SHEET SCALE: 8:1

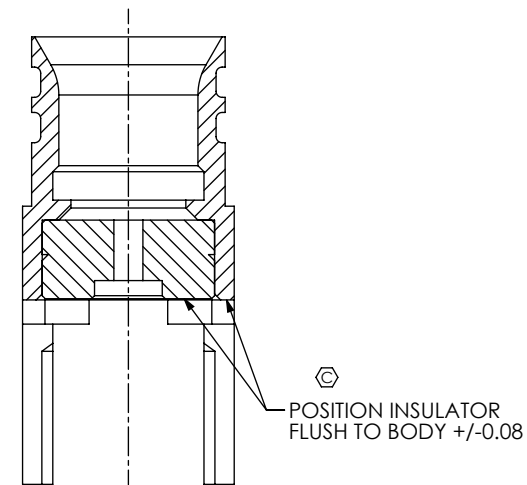
samtec

520 PARK EAST BLVD, NEW ALBANY, IN 47150
PHONE: 812-944-6733 FAX: 812-948-5047
e-Mail info@SAMTEC.com code 55322

DESCRIPTION:
MMCX STRAIGHT THROUGH HOLE, JACK- 75 OHM

MMCX7-J-P-XX-ST-TH1

BY: ALVINW	10/08/2011	SHEET 1 OF 2
------------	------------	--------------



IN PROCESS 1
INSERT INSULATOR

PROPRIETARY NOTE

THIS DOCUMENT CONTAINS INFORMATION
CONFIDENTIAL AND PROPRIETARY TO
SAMTEC, INC. AND SHALL NOT BE REPRODUCED
OR TRANSFERRED TO OTHER DOCUMENTS OR
DISCLOSED TO OTHERS OR USED FOR ANY
PURPOSE OTHER THAN THAT WHICH IT WAS
OBTAINED WITHOUT THE EXPRESSED WRITTEN
CONSENT OF SAMTEC, INC.

DO NOT SCALE DRAWING

SHEET SCALE: 8:1

samtec

520 PARK EAST BLVD, NEW ALBANY, IN 47150
PHONE: 812-944-6733 FAX: 812-948-5047
e-Mail info@SAMTEC.com code 55322

DESCRIPTION:

MMCX STRAIGHT THROUGH HOLE, JACK- 75 OHM

DWG. NO.

MMCX7-J-P-XX-ST-TH1

BY: ALVINW

10/08/2011

SHEET 2 OF 2