

NOTES:

1) MATERIAL:

HOUSING: NYLON(PA), GLASS FILLED, UL94V-0, COLOR: SEE SHEETS 5 AND 6
INSULATOR: NYLON(PA), GLASS FILLED, UL94V-0, COLOR: SEE SHEETS 5 AND 6
TERMINALS: PHOSPHOR BRONZE, .012/ 0.30 THICK
SHIELD: BRASS, .007/ 0.18 THICK

2) FINISH:

TERMINALS:

A = SELECT GOLD IN CONTACT AREA: 50 MICROINCHES / 1.27 MICROMETERS MIN.,
*SELECT TIN IN PC TAIL AREA: 100 MICROINCHES / 2.54 MICROMETERS MIN.,
WITH OVERALL NICKEL UNDERPLATE: 50 MICROINCHES / 1.27 MICROMETERS MIN.
B = SELECT GOLD IN CONTACT AREA: 30 MICROINCHES / 0.76 MICROMETERS MIN.,
*SELECT TIN IN PC TAIL AREA: 100 MICROINCHES / 2.54 MICROMETERS MIN.,
WITH OVERALL NICKEL UNDERPLATE: 50 MICROINCHES / 1.27 MICROMETERS MIN.
*THE PRIMARY SHIPPING CARTON WILL BE LABELED "COMPLIANT TO RoHS
DIRECTIVE 2002/95/EC AND ELV ANNEX II OF DIRECTIVE 2000/53/EC".
CARTONS WITHOUT THIS LABEL MAY CONTAIN PRODUCT WITH TIN-LEAD
IN THE PC TAILS AND/OR SHIELD.

SHIELD:

100 MICROINCHES / 2.54 MICROMETERS NICKEL OVER 50 MICROINCHES / 1.27
MICROMETERS COPPER UNDERPLATE PCB GROUND TABS DIPPED IN TIN

3) PRODUCT SPECIFICATION AND PROCESSING PARAMETERS: PS-43202.

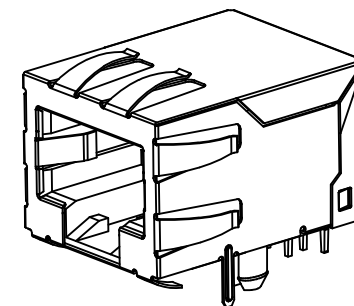
4) PACKAGING SPECIFICATION:

UNSHIELDED CONNECTOR ASSEMBLIES PACKAGED IN THERMOFORMED TRAYS
PER MOLEX PACKAGING SPECIFICATION PK-43202-003.
UNSHIELDED CONNECTOR ASSEMBLIES PACKAGED IN TUBES
PER MOLEX PACKAGING SPECIFICATION PK-43202-005.
SHIELDED CONNECTOR ASSEMBLIES PACKAGED IN THERMOFORMED TRAYS
PER MOLEX PACKAGING SPECIFICATION PK-43202-004.

5) SEE SHEETS 7 - 9 FOR P.C. BOARD LAYOUTS.

6) CONFORMS TO FCC REGULATION PART 68.5 FOR MODULAR JACKS.

7) THIS PART CONFROMS TO CLASS B REQUIREMENTS OF COSMETIC
SPECIFICATION PS-45499-002.



SHIELDED MODULAR JACK
SHOWN WITH PANEL GROUND
OPTION 'D' AND FRONT
PCB GROUND TABS.

DRAWING LEGEND

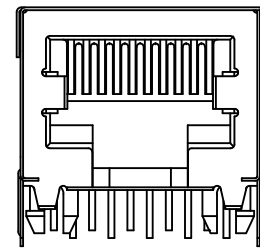
SHEET 1- NOTES, DRAWING LEGEND
SHEET 2- SHIELDED MODULAR JACK W/ BOTTOM GROUND TABS
SHEET 3- SHIELDED MODULAR JACK W/O BOTTOM GROUND TABS
SHEET 4- UNSHIELDED MODULAR JACK
SHEET 5- PART NUMBER CHARTS
SHEET 6- PART NUMBER CHARTS
SHEET 7- FOOTPRINT LAYOUT FOR 4 POSITION HOUSING
SHEET 8- FOOTPRINT LAYOUT FOR 6 POSITION HOUSING
SHEET 9- FOOTPRINT LAYOUT FOR 8 POSITION HOUSING

ADD VIEWS EC NO: UCP2012-2472 2012/02/03 DRAWN: NGUYEN CHKD: J.BELL 2012/02/03 APPR: F.S.MITH 2012/02/09	REV	DESCRIPTION	QUALITY SYMBOLS	GENERAL TOLERANCES (UNLESS SPECIFIED)		DIMENSION STYLE		SCALE	DESIGN UNITS	THIRD ANGLE PROJECTION				
						IN/MM		4:1	INCH					
				▽=0 ▽=0 ▽=0	4 PLACES	± ---	± ---	JTR	1993/03/31	TITLE ULTRA LOW PROFILE RIGHT ANGLE MODULAR JACK ASSEMBLY molex MOLEX INCORPORATED				
					3 PLACES	± ---	± .010	CHECKED BY	DATE					
					2 PLACES	± 0.25	± .014	JTR	1993/03/31					
					1 PLACE	± 0.36	± ---	APPROVED BY	DATE					
					ANGULAR ±1/2°		FSMITH	2012/02/09						
				DRAFT WHERE APPLICABLE MUST REMAIN WITHIN DIMENSIONS		MATERIAL NO.		DOCUMENT NO.		SHEET NO.				
						SEE SHTS 5&6		SDA-43202		1 OF 9				
						SIZE	THIS DRAWING CONTAINS INFORMATION THAT IS PROPRIETARY TO MOLEX INCORPORATED AND SHOULD NOT BE USED WITHOUT WRITTEN PERMISSION							

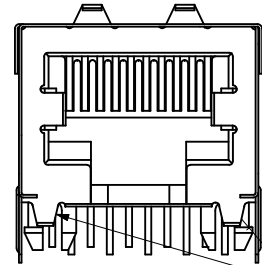
SHIELDED MODULAR JACK W/BOTTOM GROUND TABS

SIZE 8 LOADED 10 VERSION SHOWN

SIDE/TOP GROUND TAB OPTIONS FOR SHIELDS



OPTION "A"
NO TOP OR SIDE TABS

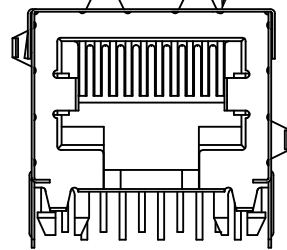


OPTION "B"
TOP TABS

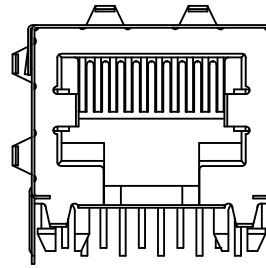
BOTTOM
GROUND TABS

OPTIONAL TOP GROUND TABS

SHIELDED MODULAR JACK ASSEMBLY
SEE SHEET 5 FOR MATERIAL NO.

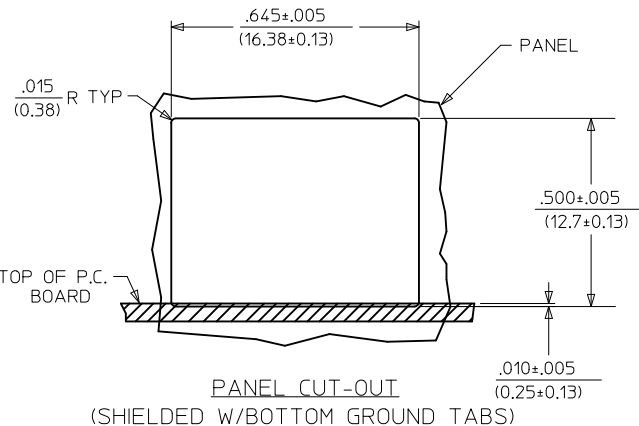


OPTION "C"
TOP AND STAGGERED SIDE TABS

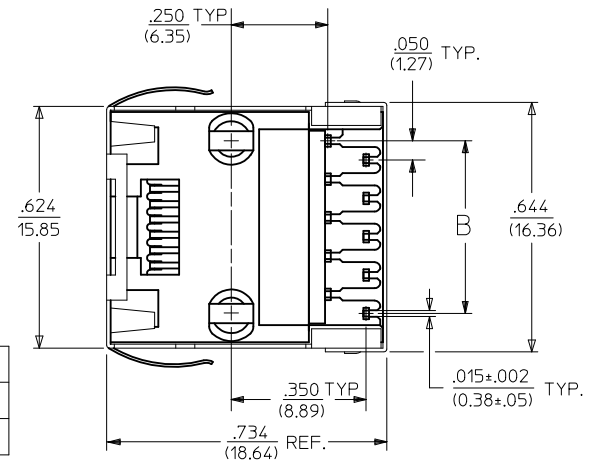
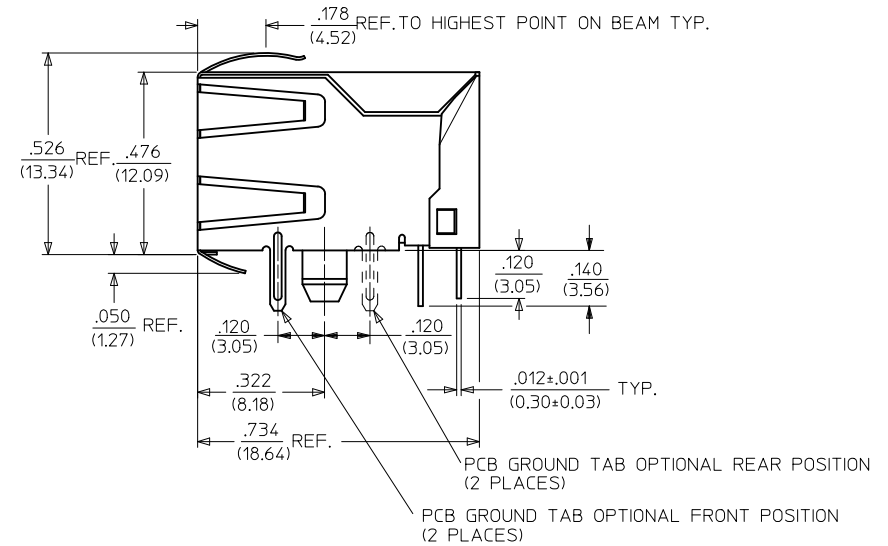



OPTION "D"
TOP AND SIDE TABS

OPTIONAL SIDE
GROUND TABS
(2 PLACES)



HOUSING SIZE	CIRCUIT SIZE	B
8	10	.450±.005 11.43±.13
8	8	.350±.005 8.89±.13

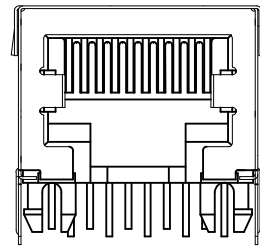


SEE SHEET 1 EC NO: UCP2012-2472 DRAWN: NGUYEN CHKD: JELL APPR: FSMITH DATE: 2012/02/03 DATE: 2012/02/03 DATE: 2012/02/09	DESCRIPTION	QUALITY SYMBOLS <div>▽=0</div> <div>▽=0</div> <div>▽=0</div>	GENERAL TOLERANCES (UNLESS SPECIFIED)		DIMENSION STYLE IN/MM		SCALE 4:1	DESIGN UNITS INCH	<div></div> THIRD ANGLE PROJECTION			
					DRAWN BY JTR	DATE 1993/03/31	TITLE ULTRA LOW PROFILE RIGHT ANGLE MODULAR JACK ASSEMBLY					
					CHECKED BY JTR	DATE 1993/03/31						
					APPROVED BY FSMITH	DATE 2012/02/09				MOLEX MOLEX INCORPORATED		
					MATERIAL NO.		DOCUMENT NO.			SHEET NO. 2 OF 9		
			DRAFT WHERE APPLICABLE MUST REMAIN WITHIN DIMENSIONS		SEE SHEET 5		SDA-43202					
					SIZE C	THIS DRAWING CONTAINS INFORMATION THAT IS PROPRIETARY TO MOLEX INCORPORATED AND SHOULD NOT BE USED WITHOUT WRITTEN PERMISSION						

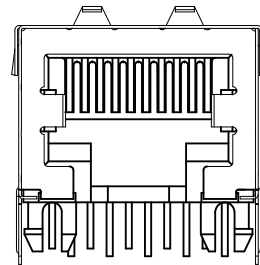
SHIELDED MODULAR JACK W/O BOTTOM GROUND TABS

SIZE 8, LOADED 10 VERSION SHOWN

SIDE/TOP GROUND TAB OPTIONS FOR SHIELDS



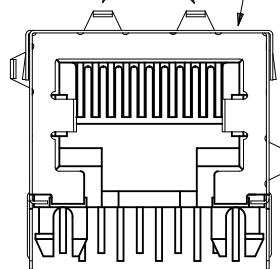
OPTION "E"
NO TOP OR SIDE TABS



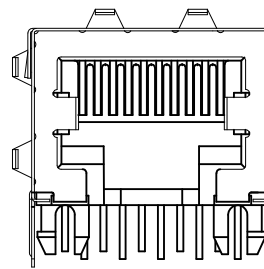
OPTION "F"
TOP TABS

OPTIONAL TOP GROUND TABS

SHIELDED MODULAR JACK ASSEMBLY
SEE SHEET 6 FOR MATERIAL NO.

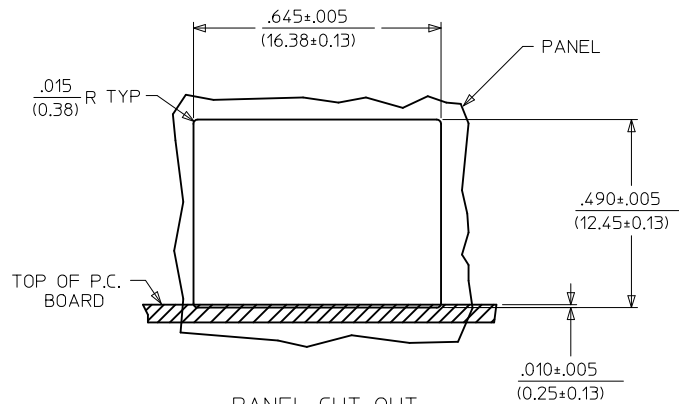


OPTION "G"
TOP AND STAGGERED SIDE TABS



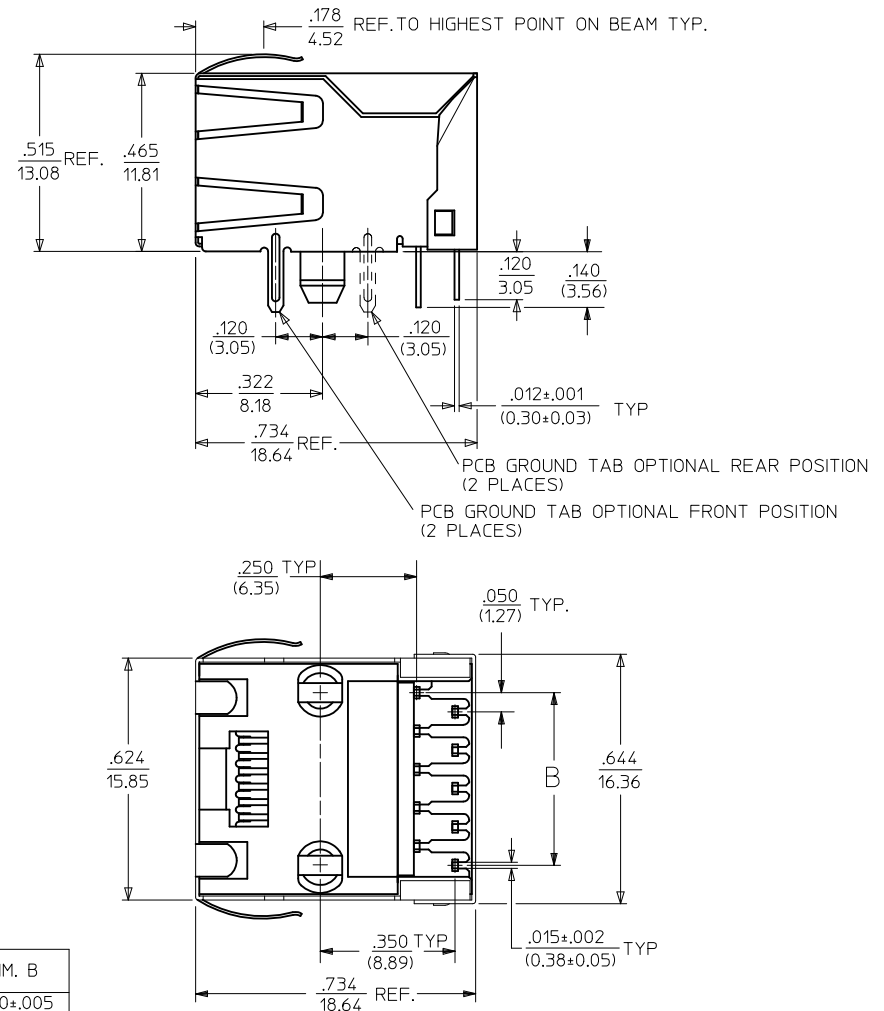
OPTION "H"
TOP AND SIDE TABS


OPTIONAL SIDE
GROUND TABS
(2 PLACES)

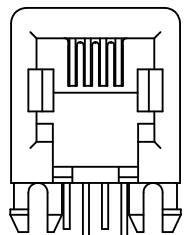


PANEL CUT-OUT
(SHIELDED W/O BOTTOM GROUND TABS)

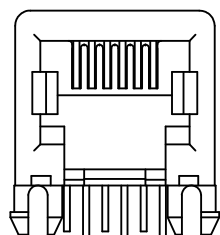
HOUSING SIZE	CIRCUIT SIZE	DIM. B
8	10	.450±.005 (11.43±0.13)
8	8	.350±.005 (8.89±0.13)



SEE SHEET 1 EC NO: UCP2012-2472 DRAWN: NGUYEN CHKD: J.BELL APPR: FSMITH	DESCRIPTION	QUALITY SYMBOLS <div>▽=0</div> <div>▽=0</div> <div>▽=0</div>	GENERAL TOLERANCES (UNLESS SPECIFIED)			DIMENSION STYLE IN/MM		SCALE 4:1	DESIGN UNITS INCH	 THIRD ANGLE PROJECTION		
						DRAWN BY JTR		DATE 1993/03/31	TITLE ULTRA LOW PROFILE RIGHT ANGLE MODULAR JACK ASSEMBLY			
						CHECKED BY JTR		DATE 1993/03/31				
						APPROVED BY FSMITH		DATE 2012/02/09			MOLEX MOLEX INCORPORATED	
						MATERIAL NO.		DOCUMENT NO.			SHEET NO.	
			DRAFT WHERE APPLICABLE MUST REMAIN WITHIN DIMENSIONS			SEE SHEET 6		SDA-43202			3 OF 9	
						SIZE C		THIS DRAWING CONTAINS INFORMATION THAT IS PROPRIETARY TO MOLEX INCORPORATED AND SHOULD NOT BE USED WITHOUT WRITTEN PERMISSION				



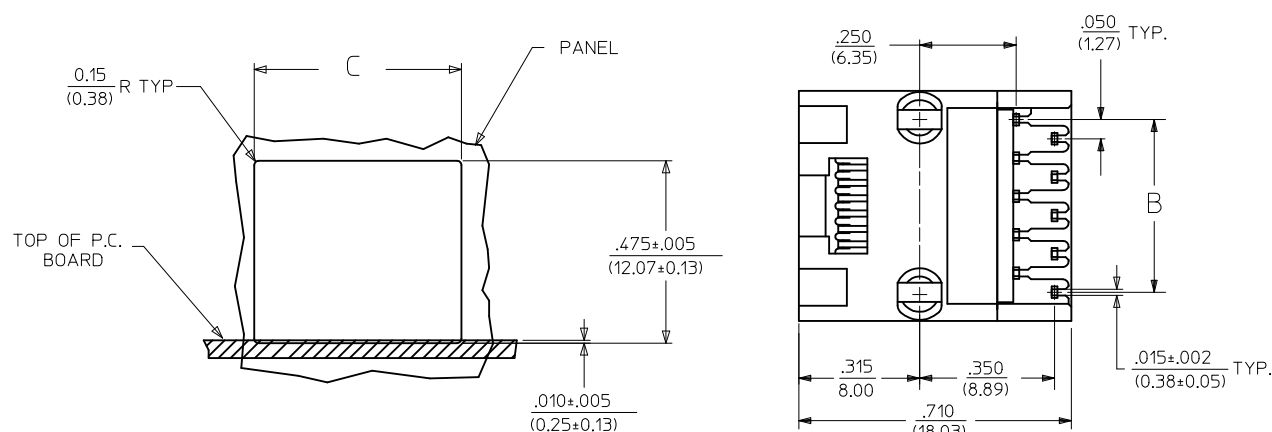
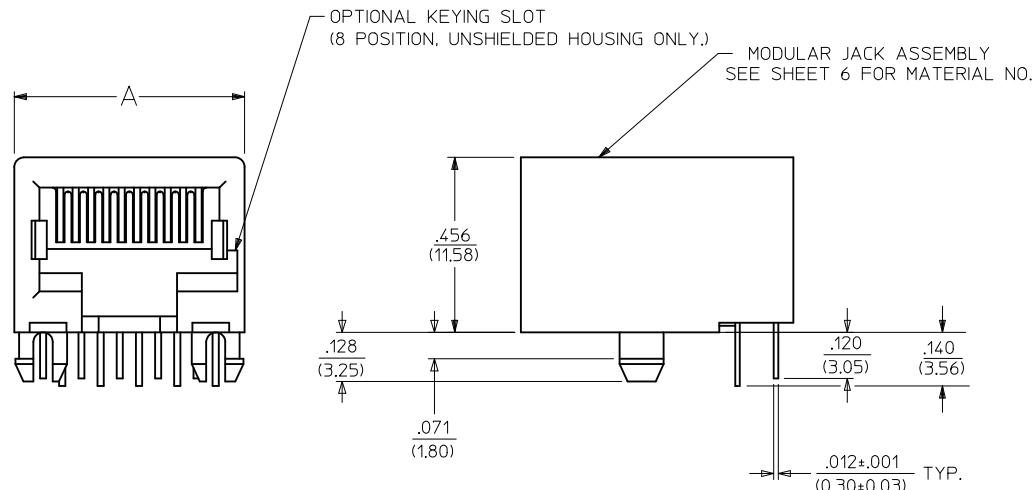
SIZE 4
LOADED 4 SHOWN



SIZE 6
LOADED 6 SHOWN

UNSHIELDED MODULAR JACKS

SIZE 8, LOADED 10 SHOWN



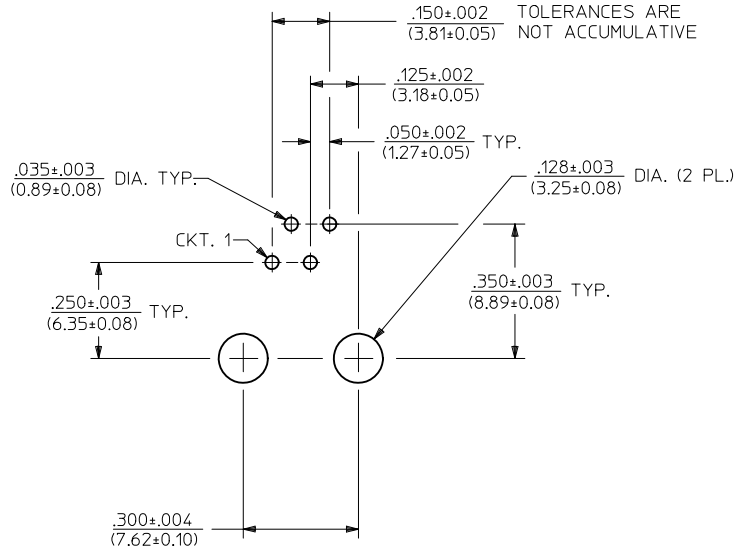
HOUSING SIZE	LOADED CIRCUITS	A	B	C
4	4	.440 (11.18)	.150±.005 (3.81±0.13)	.460±.005 (11.68±0.13)
4	2	.440 (11.18)	.050±.005 (1.27±0.13)	.460±.005 (11.68±0.13)
6	6	.520 (13.21)	.250±.005 (6.35±0.13)	.540±.005 (13.72±0.13)
6	4	.520 (13.21)	.150±.005 (3.81±0.13)	.540±.005 (13.72±0.13)
6	2	.520 (13.21)	.050±.005 (1.27±0.13)	.540±.005 (13.72±0.13)
8	10	.600 (15.24)	.450±.005 (11.43±0.13)	.620±.005 (15.75±0.13)
8	8	.600 (15.24)	.350±.005 (8.89±0.13)	.620±.005 (15.75±0.13)
8	6	.600 (15.24)	.250±.005 (6.35±0.13)	.620±.005 (15.75±0.13)
8	4	.600 (15.24)	.150±.005 (3.81±0.13)	.620±.005 (15.75±0.13)
8	2	.600 (15.24)	.050±.005 (1.27±0.13)	.620±.005 (15.75±0.13)

PANEL CUT-OUT (UNSHIELDED)

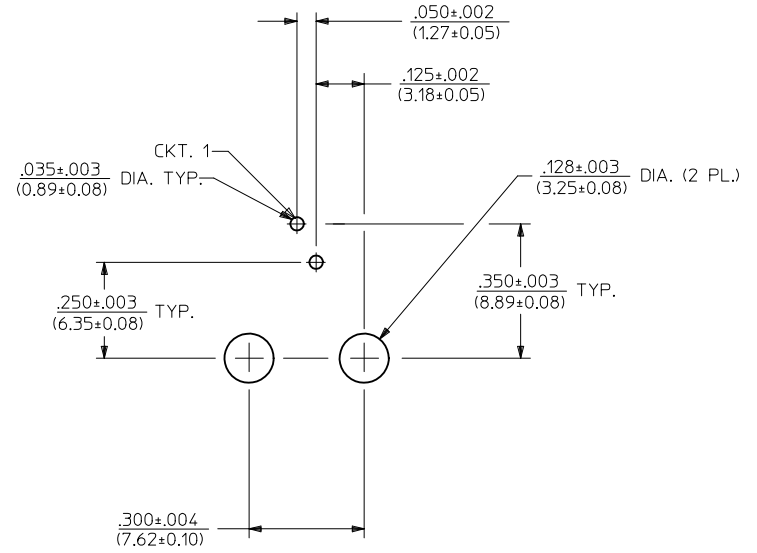
REV		DESCRIPTION		QUALITY SYMBOLS		GENERAL TOLERANCES (UNLESS SPECIFIED)		DIMENSION STYLE IN/MM		SCALE 4:1		DESIGN UNITS INCH		THIRD ANGLE PROJECTION	
SEE SHEET 1		EC NO: UCP2012-2472		2012/02/03		mm		DRAWN BY		DATE		TITLE		ULTRA LOW PROFILE	
L5		DRAWN: NGUYEN		2012/02/03		INCH		JTR		1993/03/31		RIGHT ANGLE MODULAR JACK		ASSEMBLY	
		CHKD: J.BELL		2012/02/09		4 PLACES ± --- ± ---		CHECKED BY		DATE		JTR		1993/03/31	
		APPR: FSM TH				3 PLACES ± --- ± .010		APPROVED BY		DATE		FSM TH		2012/02/09	
						2 PLACES ± .025 ± .014		MATERIAL NO.		DOCUMENT NO.		SDA-43202		SHEET NO.	
						1 PLACE ± 0.36 ± ---		SEE SHEET 6		THIS DRAWING CONTAINS INFORMATION THAT IS PROPRIETARY TO MOLEX INCORPORATED AND SHOULD NOT BE USED WITHOUT WRITTEN PERMISSION		4 OF 9			
						ANGULAR ± 1/2°									
						DRAFT WHERE APPLICABLE MUST REMAIN WITHIN DIMENSIONS									

	13	12	11	10	9	8	7	6	5	4	3	2	1					
J	SHIELDED MODULAR JACKS W/BOTTOM GROUND TABS (SHEET 2)														J			
	ASSEMBLY MATERIAL NUMBER	CONNECTOR SIZE	NUMBER OF CIRCUITS	SIDE/TOP PANEL GROUND TAB OPTION	PCB GROUND TAB OPTION	TERMINAL PLATING OPTION	PACKAGING OPTION	HOUSING COLOR										
I	43202-8900	8	10	A	FRONT POSITION	A	TRAY	BLACK							I			
	43202-8901	8	10	B	FRONT POSITION	A	TRAY											
	43202-8902	8	10	C	FRONT POSITION	A	TRAY											
	43202-8903	8	10	D	FRONT POSITION	A	TRAY											
H	43202-8908	8	10	A	REAR POSITION	A	TRAY		BLACK							H		
	43202-8909	8	10	B	REAR POSITION	A	TRAY											
	43202-8910	8	10	C	REAR POSITION	A	TRAY											
	43202-8911	8	10	D	REAR POSITION	A	TRAY											
G	43202-8916	8	8	A	FRONT POSITION	A	TRAY			BLACK							G	
	43202-8917	8	8	B	FRONT POSITION	A	TRAY											
	43202-8918	8	8	C	FRONT POSITION	A	TRAY											
	43202-8919	8	8	D	FRONT POSITION	A	TRAY											
F	43202-8924	8	8	A	REAR POSITION	A	TRAY				BLACK							F
	43202-8925	8	8	B	REAR POSITION	A	TRAY											
	43202-8926	8	8	C	REAR POSITION	A	TRAY											
	43202-8927	8	8	D	REAR POSITION	A	TRAY											
E														E				
D														D				
C														C				
B														B				
A														A				
<div><div><div>SEE SHEET 1</div><div>EC NO: UCP2012-2472</div><div>DRWN:NGUYEN</div><div>CHKD:JBELL</div><div>APPR:FSMITH</div></div><div><div>2012/02/03</div><div>2012/02/03</div><div>2012/02/09</div></div></div> <div><div>DESCRIPTION</div><div>REV</div></div> <div><div>QUALITY SYMBOLS</div><div><div>▽=0</div><div>▽=0</div><div>▽=0</div></div></div> <div><div>GENERAL TOLERANCES (UNLESS SPECIFIED)</div><div><div>mm</div><div>INCH</div></div><div><div>4 PLACES ± --- ± ---</div><div>3 PLACES ± --- ± .010</div><div>2 PLACES ± 0.25 ± .014</div><div>1 PLACE ± 0.36 ± ---</div></div><div>ANGULAR ±1/2°</div><div>DRAFT WHERE APPLICABLE MUST REMAIN WITHIN DIMENSIONS</div></div> <div><div>DIMENSION STYLE</div><div>IN/MM</div><div><div>DRAWN BY</div><div>DATE</div></div><div><div>CHECKED BY</div><div>DATE</div></div><div><div>APPROVED BY</div><div>DATE</div></div><div><div>MATERIAL NO.</div><div>SEE CHART</div></div><div><div>SIZE</div><div>C</div></div></div> <div><div>SCALE</div><div>4:1</div></div> <div><div>DESIGN UNITS</div><div>INCH</div></div> <div><div>THIRD ANGLE PROJECTION</div><div><div>TITLE</div><div>ULTRA LOW PROFILE RIGHT ANGLE MODULAR JACK ASSEMBLY</div></div><div><div>MOLEX INCORPORATED</div><div>SDA-43202</div></div><div><div>SHEET NO.</div><div>5 OF 9</div></div></div> <div>THIS DRAWING CONTAINS INFORMATION THAT IS PROPRIETARY TO MOLEX INCORPORATED AND SHOULD NOT BE USED WITHOUT WRITTEN PERMISSION</div>																		
1b_frame_C_P_AM_T Rev. F 2009/06/18	12	11	10	9	8	7	6	5	4			3	2	1				

	13	12	11	10	9	8	7	6	5	4	3	2	1																		
J	SHIELDED MODULAR JACKS W/O BOTTOM GROUND TABS (SHEET 3)							UNSHIELDED MODULAR JACKS- (SHEET 4)							J																
	ASSEMBLY MATERIAL NUMBER	CONNECTOR SIZE	NUMBER OF CIRCUITS	SIDE/TOP PANEL GROUND TAB OPTION	PCB GROUND TAB OPTION	TERMINAL PLATING OPTION	PACKAGING	HOUSING COLOR	ASSEMBLY MATERIAL NUMBER	CONNECTOR SIZE	NUMBER OF CIRCUITS	TERMINAL PLATING OPTION	KEYING OPTION	PACKAGING OPTION	HOUSING COLOR																
	43202-8800	8	10	E	FRONT POSITION	A	TRAY	BLACK	43202-4101	4	4	A	NO	TRAY	BLACK																
I	43202-8801	8	10	F	FRONT POSITION	A	TRAY		43202-4104	4	2	A	NO	TRAY																	
	43202-8802	8	10	G	FRONT POSITION	A	TRAY		43202-6101	6	6	A	NO	TRAY																	
	43202-8803	8	10	H	FRONT POSITION	A	TRAY		43202-6102	6	6	B	NO	TRAY																	
	43202-8808	8	10	E	REAR POSITION	A	TRAY		43202-6104	6	4	A	NO	TRAY																	
	43202-8809	8	10	F	REAR POSITION	A	TRAY		43202-6105	6	4	B	NO	TRAY																	
H	43202-8810	8	10	G	REAR POSITION	A	TRAY		43202-6107	6	2	A	NO	TRAY	ORANGE																
	43202-8811	8	10	H	REAR POSITION	A	TRAY		43202-6110	6	6	B	NO	TUBE																	
	43202-8816	8	8	E	FRONT POSITION	A	TRAY		43202-6113	6	2	A	NO	TRAY	GREEN																
	43202-8817	8	8	F	FRONT POSITION	A	TRAY		43202-6116	6	2	A	NO	TRAY	BLACK																
	43202-8818	8	8	G	FRONT POSITION	A	TRAY		43202-8101	8	10	A	NO	TRAY																	
	43202-8819	8	8	H	FRONT POSITION	A	TRAY		43202-8104	8	8	A	NO	TRAY																	
	43202-8824	8	8	E	REAR POSITION	A	TRAY		43202-8105	8	8	B	NO	TRAY																	
	43202-8825	8	8	F	REAR POSITION	A	TRAY		43202-8113	8	8	A	YES	TRAY																	
G	43202-8826	8	8	G	REAR POSITION	A	TRAY		43202-8116	8	8	A	NO	TRAY																	
	43202-8827	8	8	H	REAR POSITION	A	TRAY		43202-8119	8	4	A	NO	TRAY																	
									43202-8122	8	2	A	NO	TRAY																	
									43202-8125	8	8	A	NO	TRAY	BLUE																
									43202-8504	8	8	A	NO	TUBE	BLACK																
									43202-8513	8	8	A	YES	TUBE																	
F																F															
E																E															
D																D															
C																C															
B																B															
A																A															
<div><div><div>SEE SHEET 1</div><div>EC NO: UCP2012-2472</div><div>DRWN:NGUYEN</div><div>CHKD:JBELL</div><div>APPR:FSMITH</div><div>REV</div></div><div><div>2012/02/03</div><div>2012/02/03</div><div>2012/02/09</div></div><div><div>DESCRIPTION</div><div>QUALITY SYMBOLS</div></div></div> <div><div>GENERAL TOLERANCES (UNLESS SPECIFIED)</div><table><tr><th></th><th>mm</th><th>INCH</th></tr><tr><td>4 PLACES</td><td>± ---</td><td>± ---</td></tr><tr><td>3 PLACES</td><td>± ---</td><td>± .010</td></tr><tr><td>2 PLACES</td><td>± 0.25</td><td>± .014</td></tr><tr><td>1 PLACE</td><td>± 0.36</td><td>± ---</td></tr></table><div>ANGULAR ±1/2°</div></div> <div><div>DRAFT WHERE APPLICABLE MUST REMAIN WITHIN DIMENSIONS</div><div><div>DIMENSION STYLE</div><div>IN/MM</div></div><div><div>DRAWN BY</div><div>DATE</div><div>JTR</div><div>1993/03/31</div></div><div><div>CHECKED BY</div><div>DATE</div><div>JTR</div><div>1993/03/31</div></div><div><div>APPROVED BY</div><div>DATE</div><div>FSMITH</div><div>2012/02/09</div></div><div><div>MATERIAL NO.</div><div>SEE CHART</div></div><div><div>SCALE</div><div>4:1</div></div><div><div>DESIGN UNITS</div><div>INCH</div></div><div><div>THIRD ANGLE PROJECTION</div></div><div><div>TITLE</div><div>ULTRA LOW PROFILE RIGHT ANGLE MODULAR JACK ASSEMBLY</div></div><div><div>MOLEX INCORPORATED</div></div><div><div>SHEET NO.</div><div>6 OF 9</div></div><div><div>DOCUMENT NO.</div><div>SDA-43202</div></div><div><div>THIS DRAWING CONTAINS INFORMATION THAT IS PROPRIETARY TO MOLEX INCORPORATED AND SHOULD NOT BE USED WITHOUT WRITTEN PERMISSION</div></div></div>																	mm	INCH	4 PLACES	± ---	± ---	3 PLACES	± ---	± .010	2 PLACES	± 0.25	± .014	1 PLACE	± 0.36	± ---	
	mm	INCH																													
4 PLACES	± ---	± ---																													
3 PLACES	± ---	± .010																													
2 PLACES	± 0.25	± .014																													
1 PLACE	± 0.36	± ---																													
lb_frame_C_P_AM_T Rev. F 2009/06/18	12	11	10	9	8	7	6	5	4	3	2	1																			



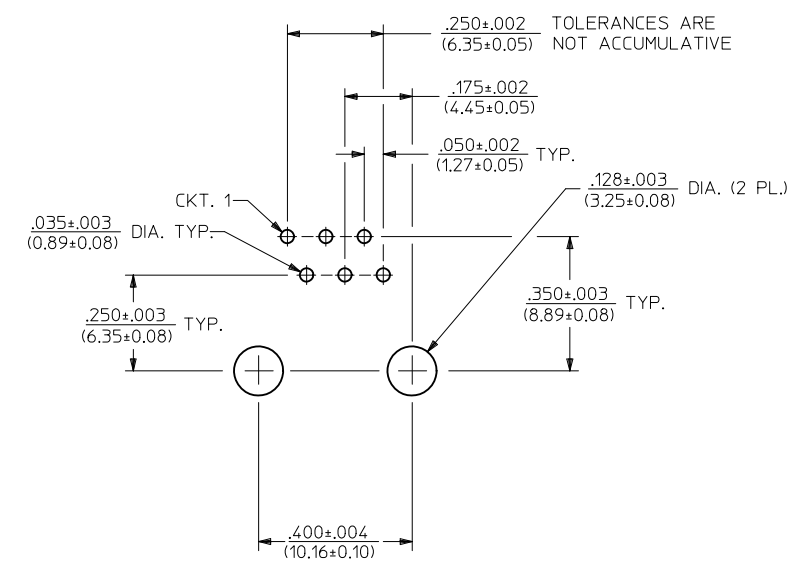
PC BOARD LAYOUT FOR 4 POSITION HOUSING
(4 CIRCUIT FOOT PRINT SHOWN)
(COMPONENT SIDE OF BOARD)



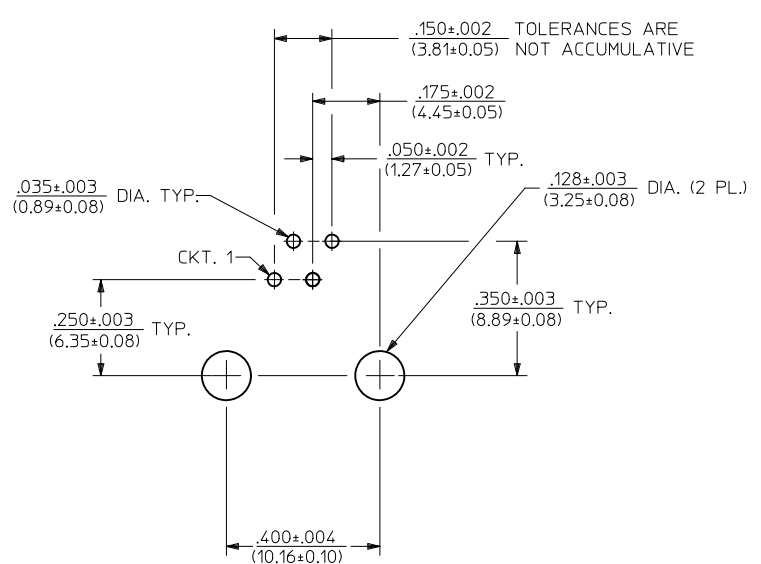
PC BOARD LAYOUT FOR 4 POSITION HOUSING
(2 CIRCUIT FOOT PRINT SHOWN)
(COMPONENT SIDE OF BOARD)

NOTES:
1. RECOMMENDED PCB THICKNESS: .062±.005/(1.57±0.13)

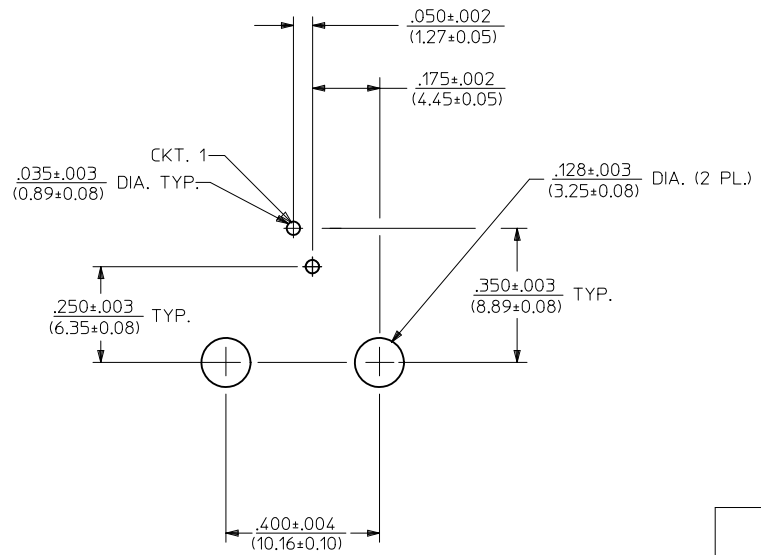
SEE SHEET 1 EC NO: UCP2012-2472 L5 DRAWN: NGUYEN CHKD: J.BELL 2012/02/03 APPR: F.S.MITH 2012/02/09	REV	DESCRIPTION	QUALITY SYMBOLS	GENERAL TOLERANCES (UNLESS SPECIFIED)			DIMENSION STYLE IN/MM		SCALE 4:1	DESIGN UNITS INCH	THIRD ANGLE PROJECTION	TITLE ULTRA LOW PROFILE RIGHT ANGLE MODULAR JACK ASSEMBLY MOLEX INCORPORATED SDA-43202	SHEET NO. 7 OF 9			
					mm	INCH	DRAWN BY JTR	DATE 1993/03/31								
				4 PLACES	± ---	± ---	CHECKED BY	DATE								
				3 PLACES	± ---	± .010	JTR	1993/03/31								
				2 PLACES	± 0.25	± .014	APPROVED BY	DATE	molex MOLEX INCORPORATED							
				1 PLACE	± 0.36	± ---	FSMITH	2012/02/09								
				ANGULAR ±1/2°			MATERIAL NO.	DOCUMENT NO.								
				DRAFT WHERE APPLICABLE MUST REMAIN WITHIN DIMENSIONS			SEE SHEET 6									
							SIZE	THIS DRAWING CONTAINS INFORMATION THAT IS PROPRIETARY TO MOLEX INCORPORATED AND SHOULD NOT BE USED WITHOUT WRITTEN PERMISSION								



PC BOARD LAYOUT FOR 6 POSITION HOUSING
(6 CIRCUIT FOOT PRINT SHOWN)
(COMPONENT SIDE OF BOARD)



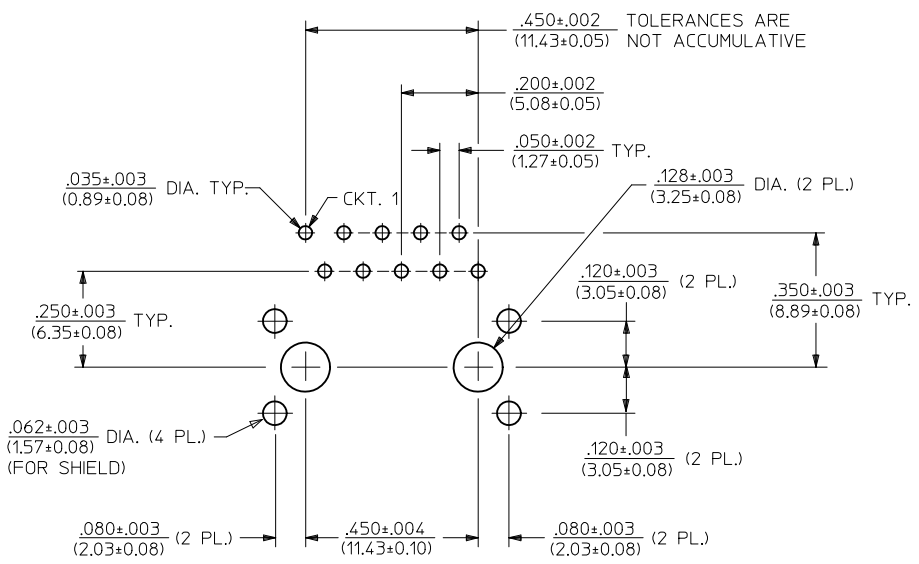
PC BOARD LAYOUT FOR 6 POSITION HOUSING
(4 CIRCUIT FOOT PRINT SHOWN)
(COMPONENT SIDE OF BOARD)



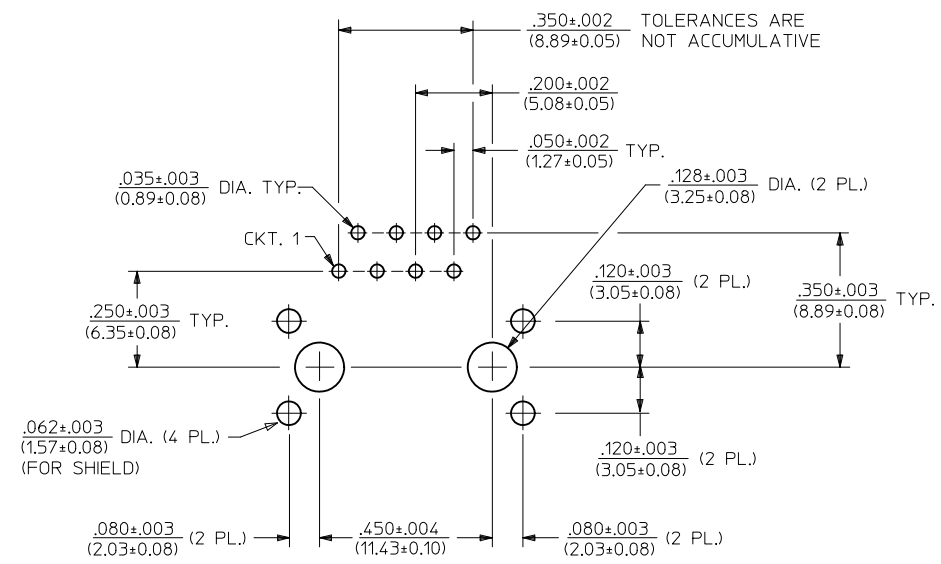
PC BOARD LAYOUT FOR 6 POSITION HOUSING
(2 CIRCUIT FOOT PRINT SHOWN)
(COMPONENT SIDE OF BOARD)

NOTES:
1. RECOMMENDED PCB THICKNESS: .062±.005/(1.57±0.13)

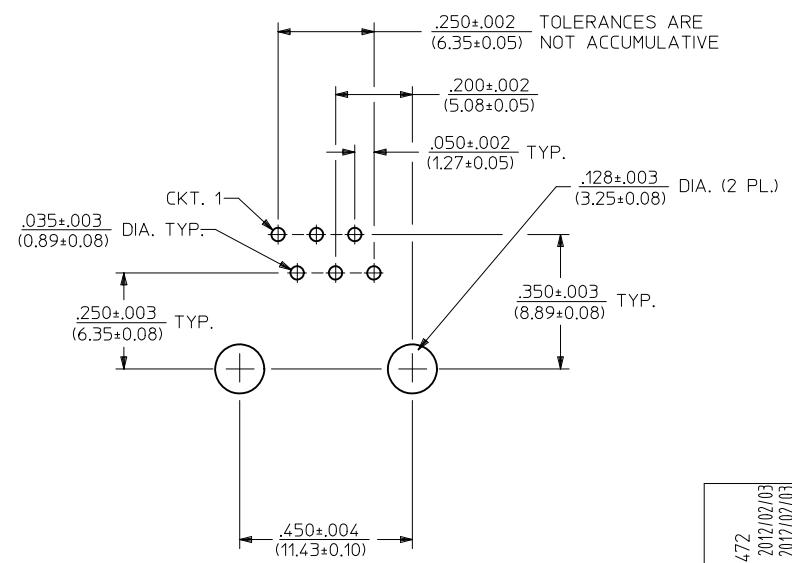
SEE SHEET 1 EC NO: UCP2012-2472 2012/02/03 DRWN:NGUYEN 2012/02/03 CHKD:JBELL 2012/02/09 APPR:FSMITH	DESCRIPTION REV	QUALITY SYMBOLS <div>▽=0</div> <div>▽=0</div> <div>▽=0</div>	GENERAL TOLERANCES (UNLESS SPECIFIED)		DIMENSION STYLE IN/MM		SCALE 4:1	DESIGN UNITS INCH	<div><div></div><div></div></div> THIRD ANGLE PROJECTION		
				mm	INCH	DRAWN BY JTR	DATE 1993/03/31	TITLE ULTRA LOW PROFILE RIGHT ANGLE MODULAR JACK ASSEMBLY <div><div></div>MOLEX INCORPORATED</div>			
			4 PLACES	± ---	± ---	CHECKED BY	DATE				
			3 PLACES	± ---	± .010	JTR	1993/03/31				
			2 PLACES	± 0.25	± .014	APPROVED BY	DATE				
			1 PLACE	± 0.36	± ---	FSMITH	2012/02/09				
DRAFT WHERE APPLICABLE MUST REMAIN WITHIN DIMENSIONS			MATERIAL NO. SEE SHEET 6		DOCUMENT NO. SDA-43202		SHEET NO. 8 OF 9				
			SIZE C		THIS DRAWING CONTAINS INFORMATION THAT IS PROPRIETARY TO MOLEX INCORPORATED AND SHOULD NOT BE USED WITHOUT WRITTEN PERMISSION						



PC BOARD LAYOUT FOR 8 POSITION HOUSING
(10 CIRCUIT FOOTPRINT SHOWN)
(COMPONENT SIDE OF BOARD)



PC BOARD LAYOUT FOR 8 POSITION HOUSING
(8 CIRCUIT FOOTPRINT SHOWN)
(COMPONENT SIDE OF BOARD)



PC BOARD LAYOUT FOR 8 POSITION HOUSING
(6 CIRCUIT FOOTPRINT SHOWN)
(COMPONENT SIDE OF BOARD)

NOTES:
1. RECOMMENDED PCB THICKNESS: .062±.005/(1.57±0.13)

SEE SHEET 1 EC NO: UCP2012-2472 DRAWN: NGUYEN CHKD: J.BELL APPR: F.SMITH REV	DESCRIPTION 2012/02/03 2012/02/03 2012/02/09	QUALITY SYMBOLS <div>▽=0</div> <div>▽=0</div> <div>▽=0</div>	GENERAL TOLERANCES (UNLESS SPECIFIED)		DIMENSION STYLE IN/MM		SCALE 4:1	DESIGN UNITS INCH	THIRD ANGLE PROJECTION			
				mm	INCH	DRAWN BY JTR	DATE 1993/03/31	TITLE ULTRA LOW PROFILE RIGHT ANGLE MODULAR JACK ASSEMBLY				
			4 PLACES	± ---	± ---	CHECKED BY	DATE					
			3 PLACES	± ---	± .010	JTR	1993/03/31					
			2 PLACES	± 0.25	± .014	APPROVED BY F.SMITH	DATE 2012/02/09	molex MOLEX INCORPORATED				
			1 PLACE	± 0.36	± ---	MATERIAL NO. SEE SHTS 5&6	DOCUMENT NO. SDA-43202					
DRAFT WHERE APPLICABLE MUST REMAIN WITHIN DIMENSIONS			THIS DRAWING CONTAINS INFORMATION THAT IS PROPRIETARY TO MOLEX INCORPORATED AND SHOULD NOT BE USED WITHOUT WRITTEN PERMISSION									

Mouser Electronics

Authorized Distributor

Click to View Pricing, Inventory, Delivery & Lifecycle Information:

Molex:

43202-8105