

## 1-1337417-0 Product Details


[Share](#)

[Print](#)

[Email](#)


**1-1337417-0**

TE Internal Number: 1-1337417-0



Active

### N Series RF Connectors



Converted to EU RoHS/ELV Compliant (Statement of Compliance)

#### Product Highlights:

- Connector - RF
- Jack
- Coaxial Cable Termination Type = Solder
- Applies To Wire/Cable
- Body Style = Straight

[View all Features](#)

### Quick Links

- ▶ [Pricing & Availability](#)
- ▶ [Search for Tooling](#)
- ▶ [Product Feature Selector](#)
- ▶ [Contact Us About This Product](#)

[Add to My Part List](#)

[Request Sample](#)

[Find Similar Products](#)

[Buy Product](#)

### Documentation & Additional Information

#### Product Drawings:

- [TYPE-N BULKHEAD SOCKET FRONT MOUNT 50 OHM \(PDF, English\)](#)

#### Catalog Pages/Data Sheets:

- None Available

#### Product Specifications:

- None Available

#### Application Specifications:

- None Available

#### Instruction Sheets:

- None Available

#### CAD Files:

- None Available

#### Related Products:

- [Tooling](#)

[List all Documents](#)

### Product Features (Please use the Product Drawing for all design activity)

#### Product Type Features:

- [Product Type](#) = Connector - RF
- [Gender](#) = Jack
- [Grade](#) = Commercial
- Lightning/EMP Protection = None
- [Dielectric Material](#) = PTFE
- Weatherproof = No
- Flats Dimension = 19.0 A/F

#### Mechanical Attachment:

- [Panel Mount Retention](#) = With
- [Panel Mount Retention Type](#) = Bulkhead, Hex Nut
- [Panel Attachment Style](#) = Front Mount
- Panel Cutout = 15.9mm x 14.6mm Double D-Shape
- Flange Dimension [Dia.] (mm [in]) = 19 [0.748]

#### Electrical Characteristics:

- Frequency = DC - 11 GHz
- Connector Impedance (Ω) = 50

#### Termination Features:

- Coaxial Cable Termination Type = Solder

#### Dimensions:

- Panel Thickness (mm [in]) = 3.00 [0.118]

#### Body Features:

- [Body Style](#) = Straight
- [Body Plating](#) = Silver
- Body Material = Brass
- Flange and Thread Material = Brass
- Lockwasher Material = Brass
- Lockwasher Plating = Silver

#### Contact Features:

- Captured Center Contact = With
- [Center Contact Plating](#) = Silver
- Center Contact Material = Brass

#### Configuration Features:

- Solder Terminal = With

#### Industry Standards:

- Government/Industry Qualification = No
- [RoHS/ELV Compliance](#) = RoHS compliant, ELV compliant
- [Lead Free Solder Processes](#) = Wave solder capable to 240°C, Wave solder capable to 260°C, Wave solder capable to 265°C
- RoHS/ELV Compliance History = Converted to comply with RoHS directive

#### Environmental:

- Operating Temperature (Max.) (°C) = 165

#### Conditions for Usage:

- Applies To = Wire/Cable

#### Packaging Features:

- Packaging Method = Individual
- Packaging Quantity = 50

#### Other:

- Brand = Greenpar

LOC E	DIST B	REVISIONS					
		P	LTR	DESCRIPTION	DATE	DWN	APVD
			C	ECR-05-011509	21SEP05	JMS	FWK

NOTES:

- 1

PACK IN ACCORDANCE WITH AMP SPEC 107-3275
- 2

100 TRAY PACK IN ACCORDANCE WITH AMP SPEC 107-3275
- 3

Ag PLATING
4. ELECTRICAL CHARACTERISTICS

FREQUENCY RANGE: DC - 11 GHz

NOMINAL IMPEDANCE: 50 Ohm

INSULATION RESISTANCE: 5000 MOhm

WORKING VOLTAGE: 1000 Volts RMS at Sea Level

DIELECTRIC WITHSTAND VOLTAGE: 2500 Volts RMS Max

CONTACT RESISTANCE: 1.00 mOhm Max

CENTRE CONTACT: 1.00 mOhm Max

OUTER CONTACT: N/A

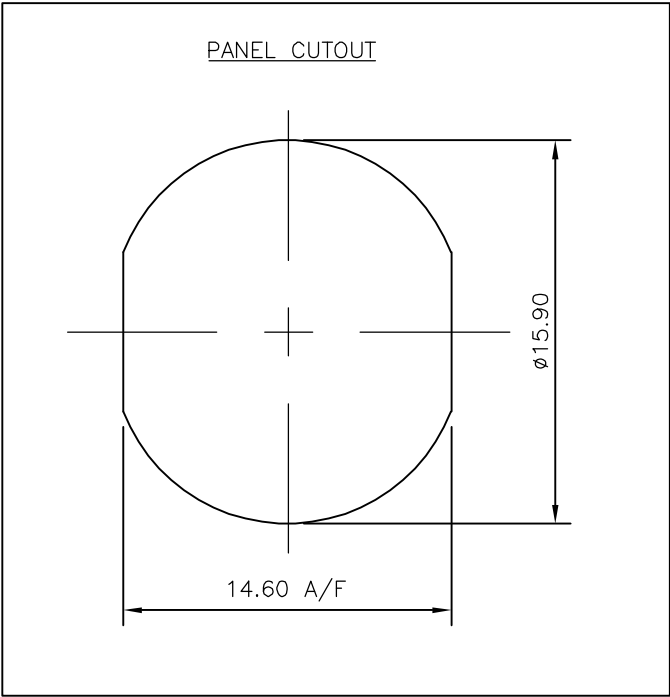
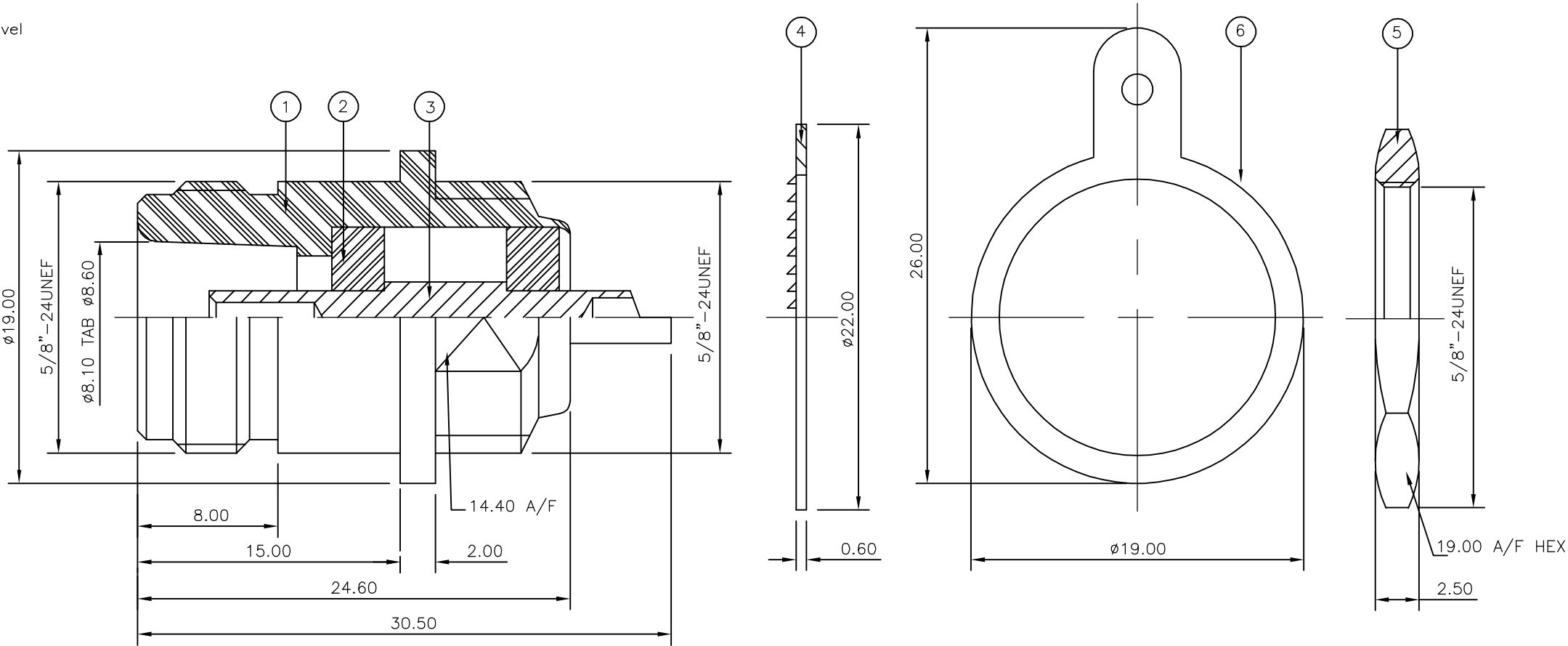
VSWR @ xGHz: N/A

INSERTION LOSS xdb: N/A
5. MECHANICAL CHARATERISTICS

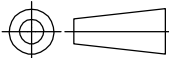
MOUNT NUT RECOMMENDED TORQUE: 6N

DURABILITY: 500 Cycles Min
6. ENVIRONMENTAL CHARACTERISTICS

OPERATING TEMPERATURE: -65 to +165 DegC



		1	1	BRASS	3	SOLDER TAG	6
		1	1	BRASS	3	HEX NUT	5
		1	1	BRASS	3	WASHER	4
		1	1	BRASS	3	CONTACT	3
		2	2	PTFE		INSULATION	2
		1	1	BRASS	3	BODY	1
		6--0	1--0	MATERIAL		DESCRIPTION	ITEM
		3	3				
QUANTITY PER ASSY				PARTS LIST			

THIS DRAWING IS A CONTROLLED DOCUMENT.		DWN J.SANDWELL 21SEP05		<div>tyco</div> <div>Electronics</div>		Tyco Electronics Corporation									
		CHK S.PARLOW 21SEP05				Bideford EX39 4HE									
DIMENSIONS: mm		<div>TOLERANCES UNLESS OTHERWISE SPECIFIED:</div> <div><div>0 PLC ± -</div><div>1 PLC ± -</div><div>2 PLC ± -</div><div>3 PLC ± -</div><div>4 PLC ± -</div><div>ANGLES ± -</div></div>		APVD F.WHEELER-KING 21SEP05		NAME									
				PRODUCT SPEC		TYPE-N BULKHEAD SOCKET FRONT MOUNT 50 OHM									
				108-3435		-									
				APPLICATION SPEC		-									
				-											
MATERIAL		FINISH		SIZE		CAGE CODE		DRAWING NO		RESTRICTED TO					
SEE TABLE		SEE TABLE		WEIGHT		A3		00779		C-1337417					
CUSTOMER DRAWING										SCALE		SHEET		REV	
										NTS		1 OF 1		C	