



## Search Results

### Evaluate

- FAQ's
- Product Bulletins
  - PDF-Fully Automa ..
  - PDF-Harness Boar ..
- Videos
  - WMV-Robotic Kit ..
  - WMV-Automatic Ca ..

### Design a Solution

- Catalog Cut Sheet
- PDF-ATM-W187-M P
- Part Drawings
- PDF-Automatic Ti ..

### How to Buy

- Bill of Material
- Favorite Products List
- Locate Distributor

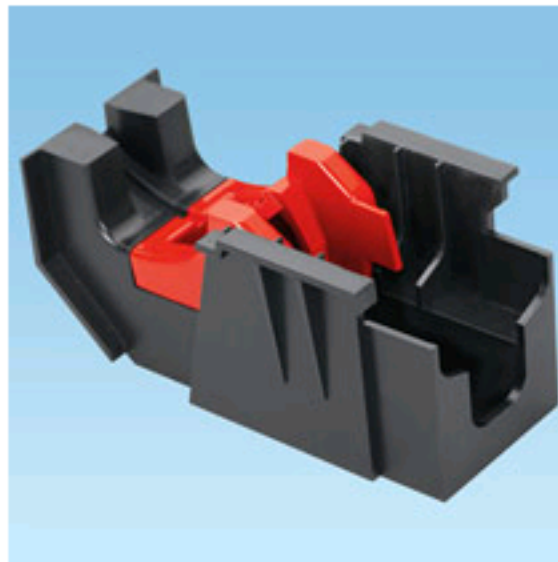
## Home > Product On-Line Catalog > Search Results >

Current refinements (click  to remove) Search Tips 


 Text Search: 'ATMB'

Your search criteria matched only one product, shown below

## ATMB



This selected item is part of a **Panduit Automatic Cable Tie Tool (PAT)** system. For more information about our PAT systems and a guided approach to selecting the components you need for a complete solution, please click the link for the Product Bulletin titled, Fully Automatic Cable Tie Installation Systems (WM-CTCB39) in the *Product Bulletins* Section on the left sidebar.

• Part Number	ATMB
• RoHS Compliancy Status	RoHS directive is not applicable
• Part Description	Harness board fixture base
• Material	Acetal
• Color	Black
• CE Compliant	Yes
• Mounting	Screw base to harness board with 1/4" screws
• Pricing Description	Harness Board Fixture Base
• Used With Cable Ties	PLT1.5M-XMR, BT1.5M-XMR
• Min. Order UOM	PC
• Min. Order Qty.	1
• BOM Qty. (# of Pkgs.)	<input type="text" value="0"/>
• Add to Favorite Product List	

Please [register](#) to utilize the 'Bill of Materials', 'Submit Quotes' and 'Favorite Product List' features.