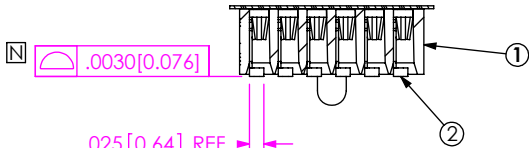
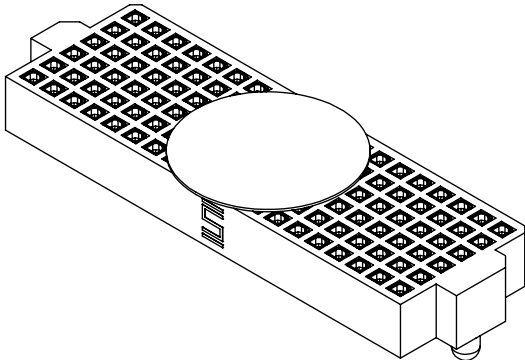
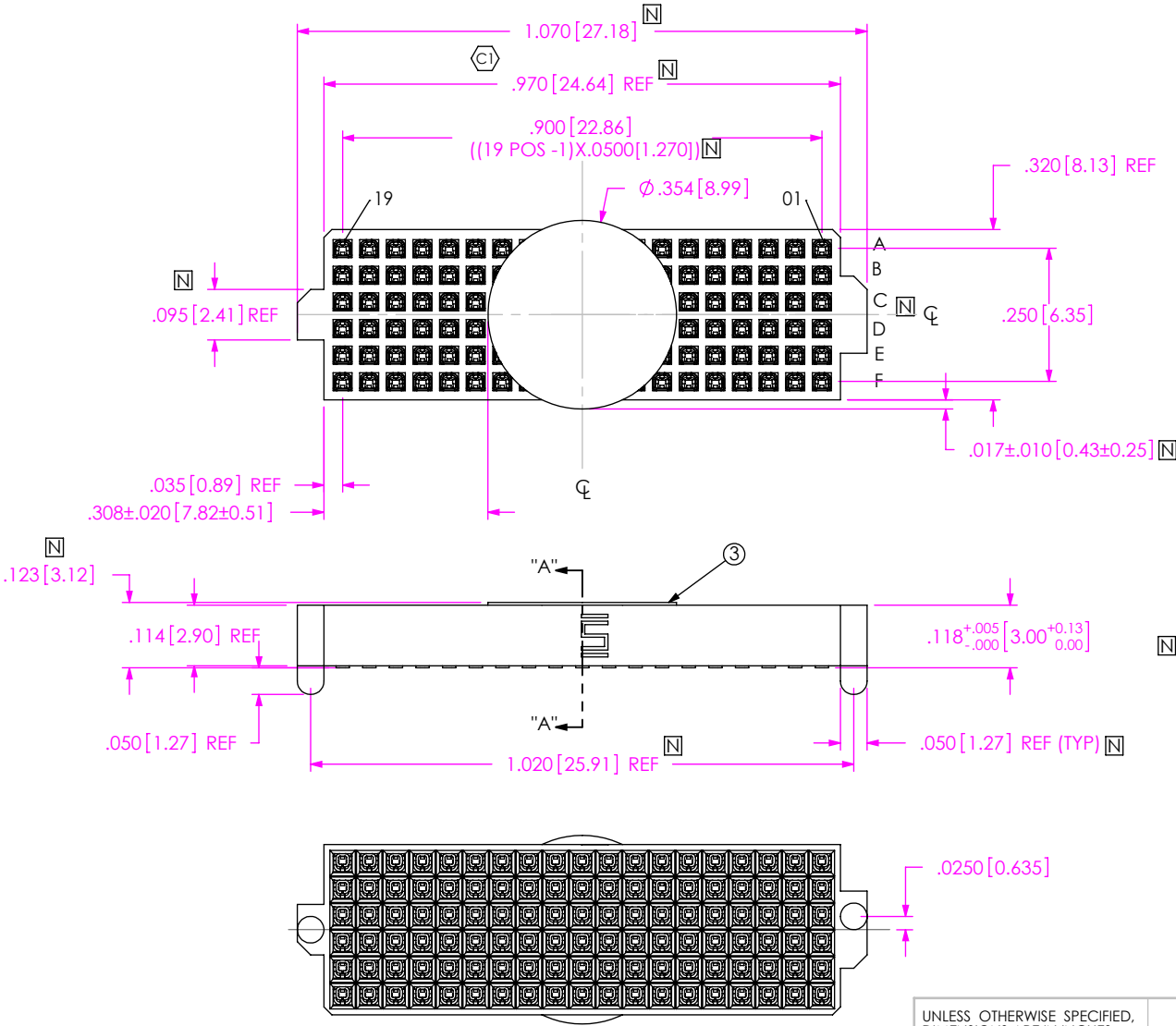


- NOTES: [N]
- 1. ASP-105990-01-B NOT AVAILABLE AS STANDARD.
  - 2. [C] REPRESENTS A CRITICAL DIMENSION.
  - 3. NOTE DELETED
  - 4. BURR ALLOWANCE: .0015[0.038] MAX.
  - 5. MINIMUM PUSHOUT FORCE: .5 LB [2.22 N]
  - 6. MAXIMUM ALLOWABLE BOW: .002 [0.051] INCH/INCH AFTER ASSEMBLY.
  - 7. CONTACT NOT ALLOWED TO PROTRUDE FROM TOP OF BODY.
  - 8. PARTS TO BE PACKAGED IN TAPE & REEL. FOR QTY'S LESS THAN 125 PCS, NO TRAILER OR LEADER WILL BE SUPPLIED

DO NOT  
SCALE FROM  
THIS PRINT

THIS CONNECTOR IS NOT CAPABLE OF WITHSTANDING  
TYPICAL LEAD FREE PROCESSING TEMPERATURES.



SECTION "A"-A

ITEM NO.	PART NUMBER	QUANTITY	MATERIAL
1	ASP-105990-01-B	1.0000	VECTRA E130i, COLOR BLACK
2	C-118-01-H	114.00	BeCu #25, 1/2 HARD, AGE HARDENED
3	K-850-650	1.0000	POLYIMIDE FILM (KAPTON)
4	CT-ASP1233MS	1.0000	CONDUCTIVE POLYMER

UNLESS OTHERWISE SPECIFIED,  
DIMENSIONS ARE IN INCHES.  
TOLERANCES ARE:

DECIMALS	ANGLES
.XX: ±.01[.3]	2°
.XXX: ±.005[.13]	
.XXXX: ±.0020[.051]	

PROPRIETARY NOTE

THIS DOCUMENT CONTAINS INFORMATION  
CONFIDENTIAL AND PROPRIETARY TO  
SAMTEC, INC. AND SHALL NOT BE REPRODUCED  
OR TRANSFERRED TO OTHER DOCUMENTS OR  
DISCLOSED TO OTHERS OR USED FOR ANY  
PURPOSE OTHER THAN THAT WHICH IT WAS  
OBTAINED WITHOUT THE EXPRESSED WRITTEN  
CONSENT OF SAMTEC, INC.

DO NOT SCALE DRAWING

SHEET SCALE: 3:1

PLATING:  
CONTACT AREA: .000030 GOLD OVER .000050 NICKEL  
REMAINDER: .000003 FLASH GOLD OVER .000050 NICKEL

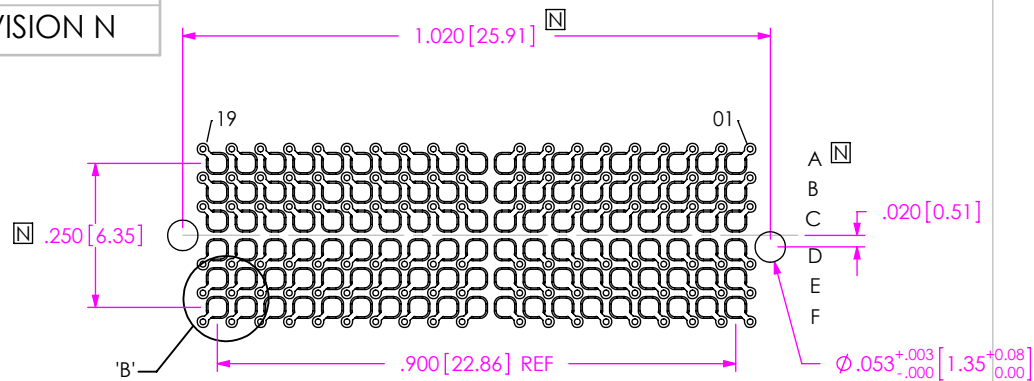
**samtec**

520 PARK EAST BLVD, NEW ALBANY, IN 47150  
PHONE: 812-944-6733 FAX: 812-948-5047  
e-Mail: info@SAMTEC.com code: 55322

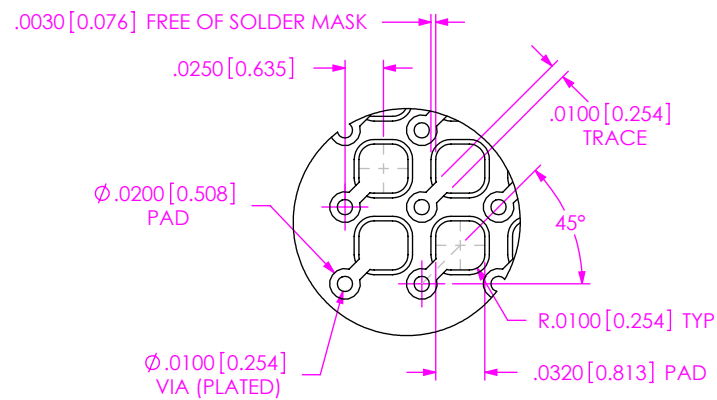
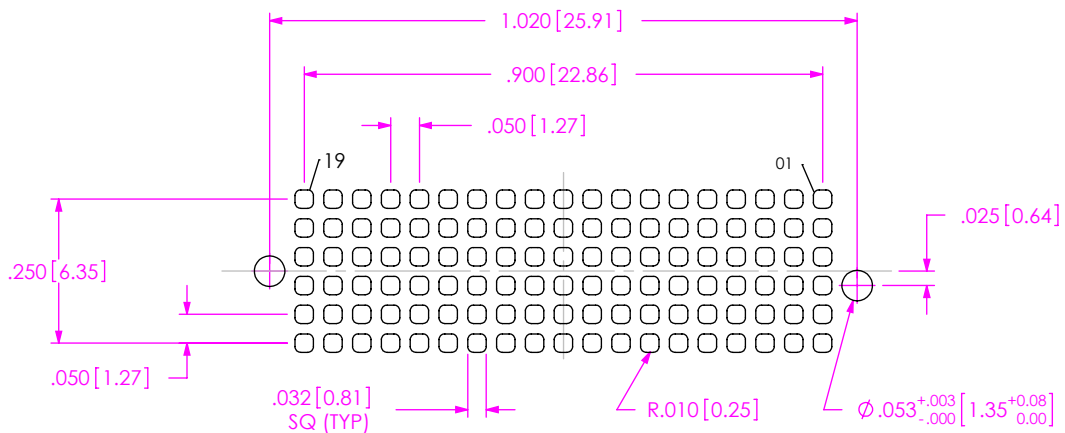
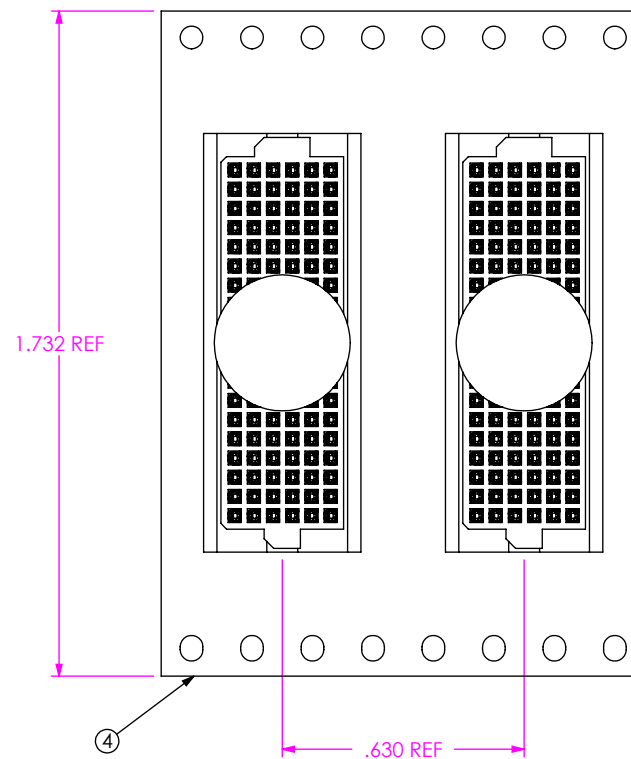
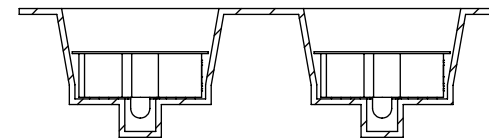
DESCRIPTION:  
VITA 42 (NO SOLDERBALL) SOCKET ASSEMBLY

DWG. NO.  
**ASP-105884-01**

BY: T.WERNE 4/8/2003 SHEET 1 OF 2



RECOMMENDED BOARD LAYOUT

DETAIL 'B'  
SCALE 8:1RECOMMENDED STENCIL LAYOUT  
STENCIL TO BE .0060 [0.152] THICKUSER DIRECTION OF UN-REELING  
POCKET NOT DETAILEDPACKAGING VIEW  
SCALE: 2:1

## PROPRIETARY NOTE

THIS DOCUMENT CONTAINS INFORMATION  
CONFIDENTIAL AND PROPRIETARY TO  
SAMTEC, INC. AND SHALL NOT BE REPRODUCED  
OR TRANSFERRED TO OTHER DOCUMENTS OR  
DISCLOSED TO OTHERS OR USED FOR ANY  
PURPOSE OTHER THAN THAT WHICH IT WAS  
OBTAINED WITHOUT THE EXPRESSED WRITTEN  
CONSENT OF SAMTEC, INC.

SHEET SCALE: 3:1

**samtec**

520 PARK EAST BLVD, NEW ALBANY, IN 47150  
PHONE: 812-944-6733 FAX: 812-948-5047  
e-Mail: info@SAMTEC.com code: 55322

DESCRIPTION:

VITA 42 (NO SOLDERBALL) SOCKET ASSEMBLY

DWG. NO.

ASP-105884-01

BY: T.WERNE

4/8/2003

SHEET 2 OF 2