



SAW Components

Data Sheet B3640

Data Sheet

A large, stylized graphic of a globe is shown, with the word "EPCOS" overlaid in large, glowing, white letters. The globe is depicted with a grid of latitude and longitude lines, and the continents are visible. The overall image has a dark, atmospheric background with a subtle glow around the globe and the text.



SAW Components

B3640

Low-Loss Filter

238,0 MHz

Data Sheet

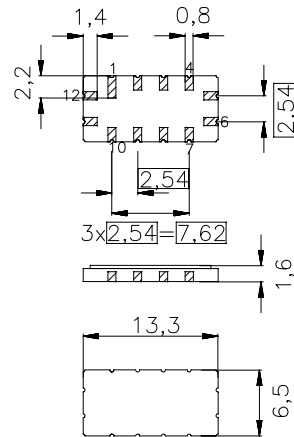
Ceramic package QCC12

Features

- Low-loss IF filter for DCS base station
- Tx path
- Temperature stable
- Ceramic SMD package

Terminals

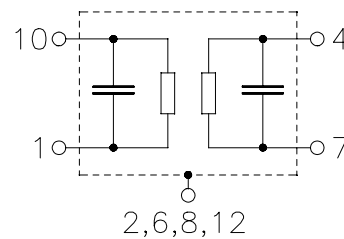
- Gold plated



Dim. in mm, aprox. weight 0,4 g

Pin configuration

1, 10	Input (balanced)
7	Output
4	Output ground
3, 9	To be grounded
2, 6, 8, 12	Case ground
5, 11	Not connected



Type	Ordering code	Marking and Package according to	Packing according to
B3640	B39231-B3640-Z510	C61157-A7-A55	F61074-V8026-Z000

Electrostatic Sensitive Device (ESD)

Maximum ratings

Operable temperature range	T	- 20/+ 75	°C	
Storage temperature range	T_{stg}	- 40/+ 85	°C	
DC voltage	V_{DC}	10	V	
Source power	P_s	10	dBm	



SAW Components

B3640

Low-Loss Filter

238,0 MHz

Data Sheet

Characteristics

Operating temperature range:

$$T_A = -5 - 75 \text{ }^{\circ}\text{C}$$

Terminating source impedance:

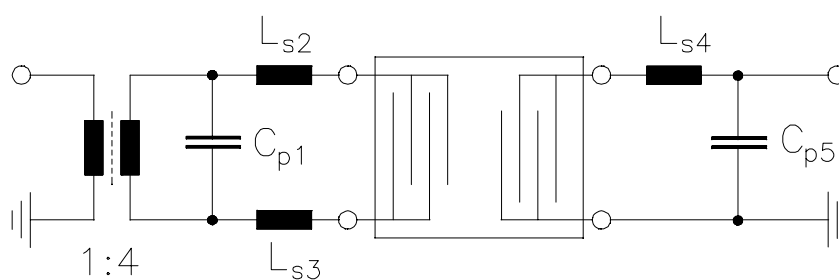
$$Z_S = 200 \text{ } \Omega \text{ and matching network.}$$

Terminating load impedance:

$$Z_L = 50 \text{ } \Omega \text{ and matching network}$$

		min.	typ.	max.	
Nominal frequency	f_N	—	238,0	—	MHz
Minimum insertion attenuation (including matching network)	α_{\min}	7	8,5	9,5	dB
Amplitude ripple (p-p)	$\Delta\alpha$				
	$f_N \pm 100 \text{ kHz}$	—	0,3	1,1	dB
	$f_N \pm 300 \text{ kHz}$	—	1,9	3,0	dB
Absolute group delay	τ	—	1,5	3	μs
Group delay variation	$\Delta\tau$				
	$f_N \pm 100 \text{ kHz}$	—	50	150	ns
	$f_N \pm 300 \text{ kHz}$	—	90	250	ns
Relative attenuation (relative to α_{\min})	α_{rel}				
$f_N \pm 0,6 \text{ MHz} \dots f_N \pm 0,8 \text{ MHz}$		5	8	—	dB
$f_N \pm 0,8 \text{ MHz} \dots f_N \pm 1,8 \text{ MHz}$		10	25	—	dB
$f_N \pm 1,8 \text{ MHz} \dots f_N \pm 6,0 \text{ MHz}$		25	45	—	dB
$f_N \pm 6,0 \text{ MHz} \dots f_N \pm 20 \text{ MHz}$		30	41	—	dB
$f_N \pm 20 \text{ MHz} \dots f_N \pm 120 \text{ MHz}$		40	42	—	dB
Temperature coefficient of frequency ¹⁾	TC_f	—	-0,036	—	ppm/K ²
Turnover temperature	T_0	—	30	—	$^{\circ}\text{C}$

¹⁾ Temperature dependance of f_c : $f_c(T_A) = f_c(T_0)(1 + TC_f(T_A - T_0)^2)$

**SAW Components****B3640****Low-Loss Filter****238,0 MHz****Data Sheet****Matching network** (element values depend on pcb layout)

$$C_{p1} = 10 \text{ pF}$$

$$L_{s2} = 22 \text{ nH}$$

$$L_{s3} = 27 \text{ nH}$$

$$L_{s4} = 33 \text{ nH}$$

$$C_{p5} = 22 \text{ pF}$$



SAW Components

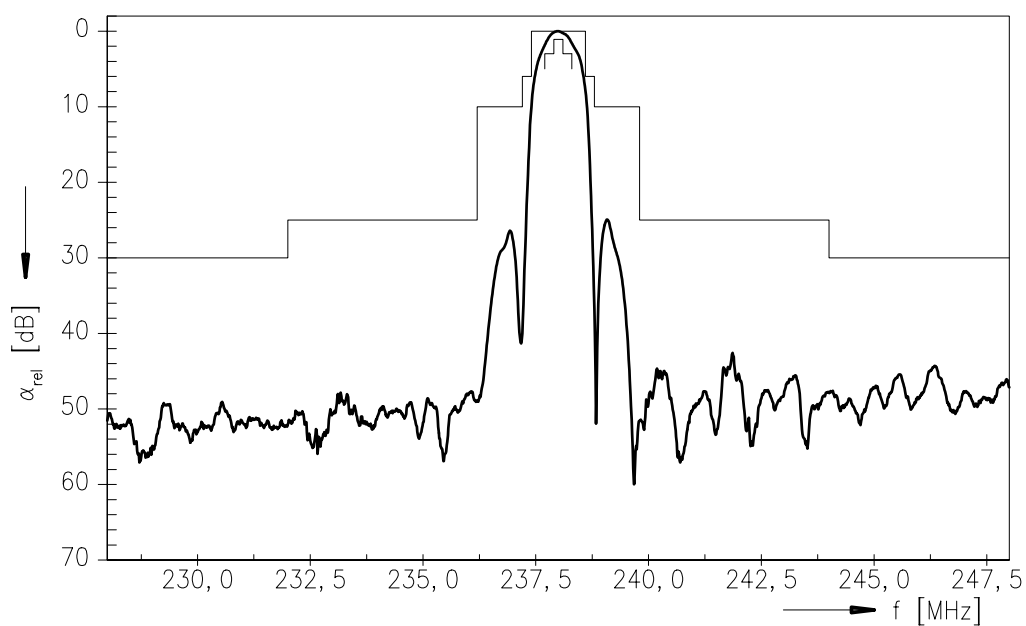
B3640

Low-Loss Filter

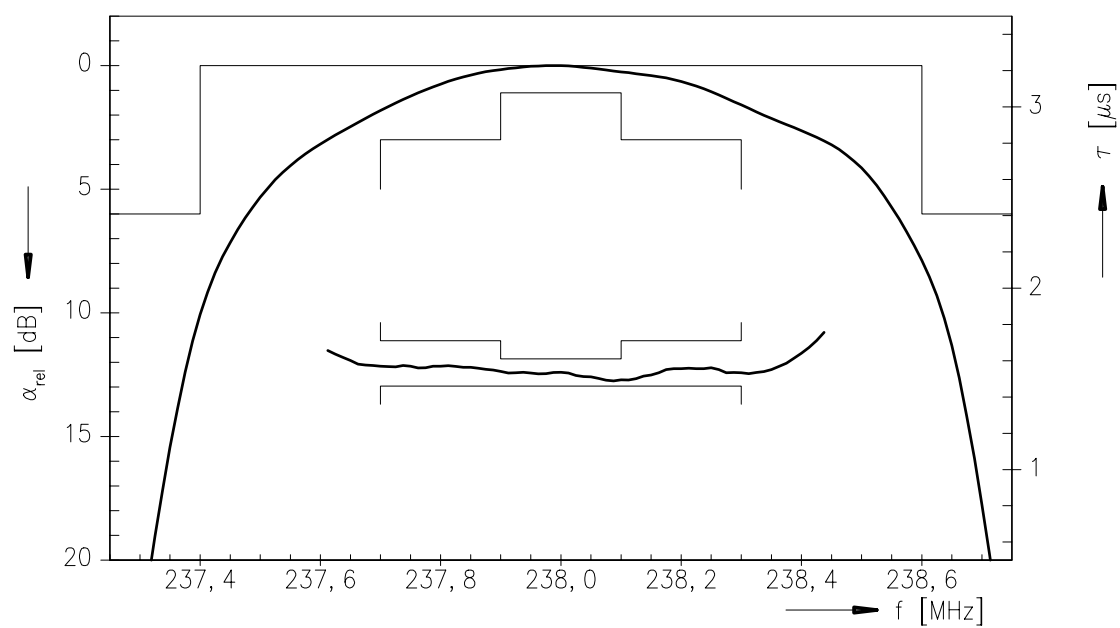
238,0 MHz

Data Sheet

Normalized frequency response



Normalized frequency response (pass band)





SAW Components	B3640
Low-Loss Filter	238,0 MHz

Data Sheet

Published by EPCOS AG
Surface Acoustic Wave Components Division, SAW MC IS
P.O. Box 80 17 09, D-81617 München

© EPCOS AG 1999. All Rights Reserved.

As far as patents or other rights of third parties are concerned, liability is only assumed for components per se, not for applications, processes and circuits implemented within components or assemblies.

The information describes the type of component and shall not be considered as assured characteristics.

Terms of delivery and rights to change design reserved.

For questions on technology, prices and delivery please contact the sales offices of EPCOS AG or the international representatives.

Due to technical requirements components may contain dangerous substances. For information on the type in question please also contact one of our sales offices.