

DO NOT
SCALE FROM
THIS PRINT

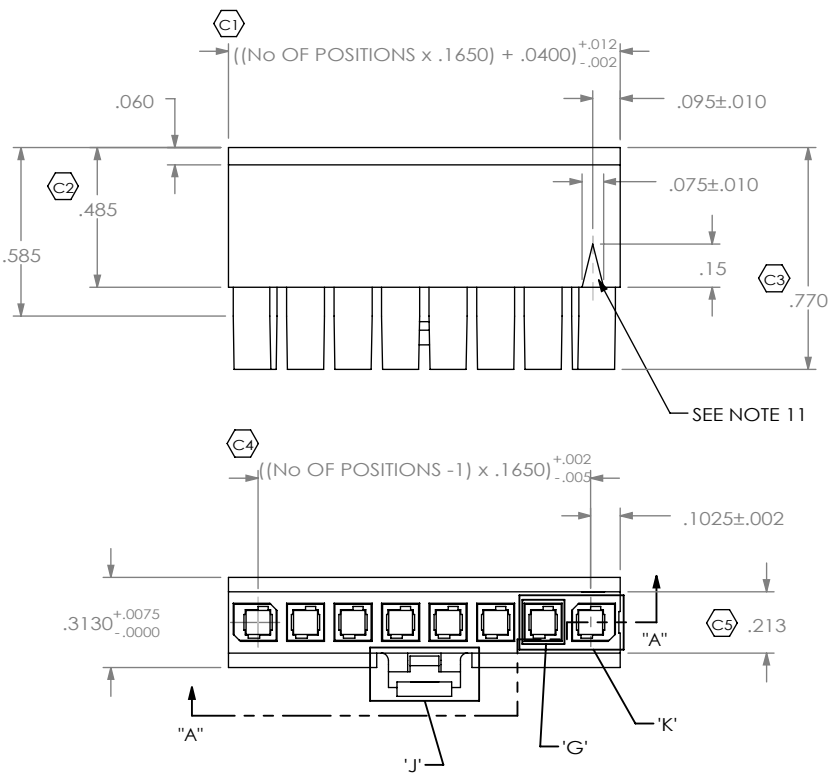


FIG. 1
IPBD-08-S SHOWN

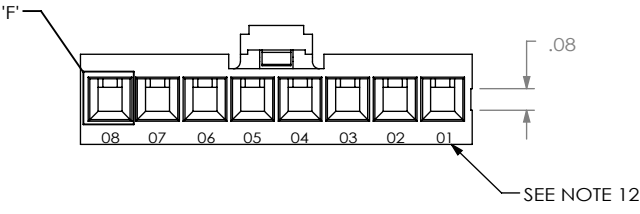
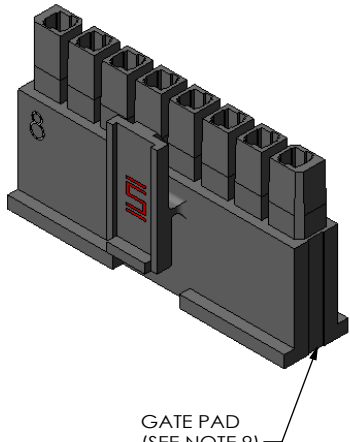
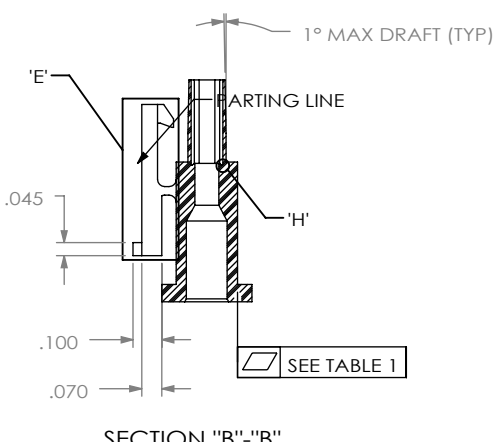
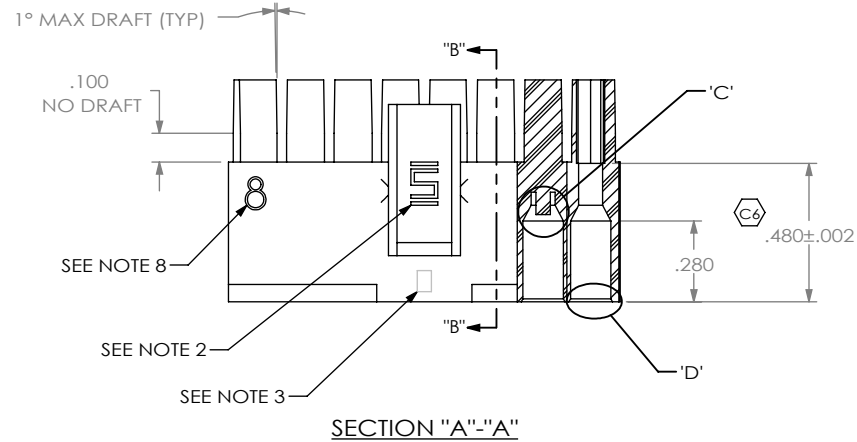


TABLE 1		
No OF POS	T/B	
-02 THRU -10	.002	.002

IPBD-XX-S-X

No OF POSITIONS
-02 THRU -10
[SEE FIG. 2 FOR -02 POSITION]

OPTION
-R: RETENTION LATCH
(SEE SHEET 3, FIG. 3)

ROW SPECIFICATION
-S: SINGLE

- NOTES:
1. C1 REPRESENTS A CRITICAL DIMENSION.
 2. SAMTEC LOGO SHALL APPEAR AT ONE LOCATION ON SURFACE SHOWN, APPROXIMATELY .150 x .094.
 3. ALL MULTIPLE CAVITY MOLDS SHALL IDENTIFY EACH CAVITY WITH A LETTER DESIGNATION LOCATED WHERE SHOWN.
 4. ALL IDENTIFICATION MARKS MUST NOT STAND GREATER THAN .002 OFF THE SURFACE OF THE PART.
 5. MOLDED SURFACES SHALL BE CONSISTENT AND SMOOTH. SURFACES TO BE FREE OF SCATCHES, NICKS, SINK AREAS, VOIDS OR OTHER BLEMISHES.
 6. MAX ALLOWABLE BOW: SEE TABLE 1.
 7. PART TO BE SYMMETRIC ABOUT THE CENTERLINE WITHIN +/- .001, UNLESS OTHERWISE STATED.
 8. NUMBER OF POSITIONS TO BE SHOWN ON THIS SURFACE, SIZE AND DEPTH SIMILAR TO POSITION 1 INDICATOR.
 9. GATE PAD MUST BE RECESSED .005.
 10. END CORES ARE POLARIZED. CONFIRM GEOMETRY RELATIVE TO POSITION 1 INDICATOR & GATE PAD.
 11. POSITION 1 INDICATOR TO BE .0005 MAX DEPTH.
 12. EACH POSITION TO BE IDENTIFIED WHERE SHOWN.
 13. .0005 MAX MISMATCH PERMISSIBLE (ALL FOUR SIDES).

UNLESS OTHERWISE SPECIFIED, DIMENSIONS ARE IN INCHES. TOLERANCES ARE:

DECIMALS	ANGLES
.XX: ±.01 [.3]	2°
.XXX: ±.003 [.08]	
.XXXX: ±.0015 [.038]	

PROPRIETARY NOTE

THIS DOCUMENT CONTAINS INFORMATION CONFIDENTIAL AND PROPRIETARY TO SAMTEC, INC. AND SHALL NOT BE REPRODUCED OR TRANSFERRED TO OTHER DOCUMENTS OR DISCLOSED TO OTHERS OR USED FOR ANY PURPOSE OTHER THAN THAT WHICH IT WAS OBTAINED WITHOUT THE EXPRESSED WRITTEN CONSENT OF SAMTEC, INC.

MATERIAL: DO NOT SCALE DRAWING SHEET SCALE: 1:0.667

VALOX 457, COLOR NATURAL

MAX REGRIND: 50%
MAX FLASH ALLOWED: .003
MAX GATE VESTIGE: .002

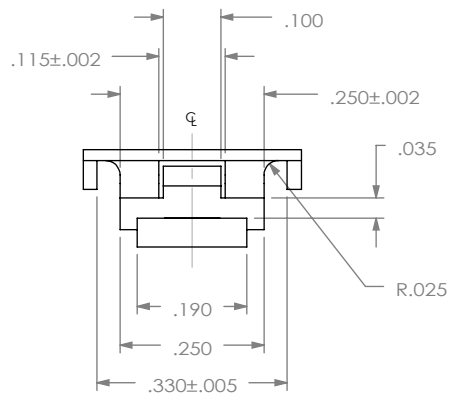
DESCRIPTION:
.165 SHROUDED CONTACT BODY

DWG. NO.
IPBD-XX-S-X

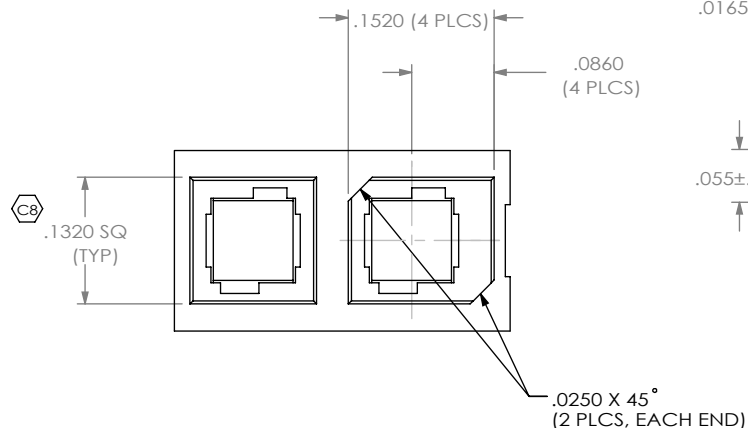
BY: DEAN P 4/14/2005 SHEET 1 OF 3

samtec

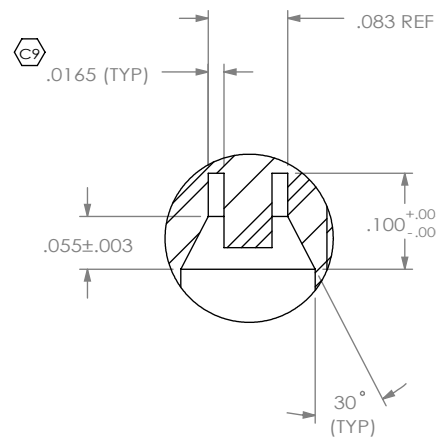
520 PARK EAST BLVD, NEW ALBANY, IN 47150
PHONE: 812-944-6733 FAX: 812-948-5047
e-Mail: info@SAMTEC.com code: 55322



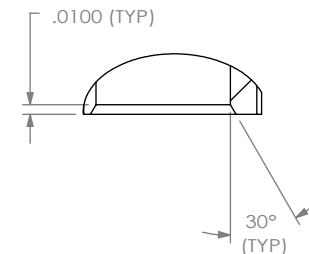
DETAIL 'J'
SCALE 3 : 1



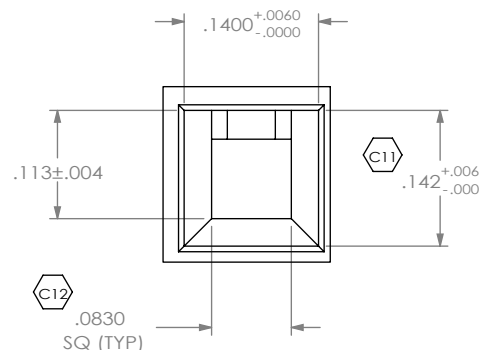
DETAIL 'K'
SCALE 5 : 1



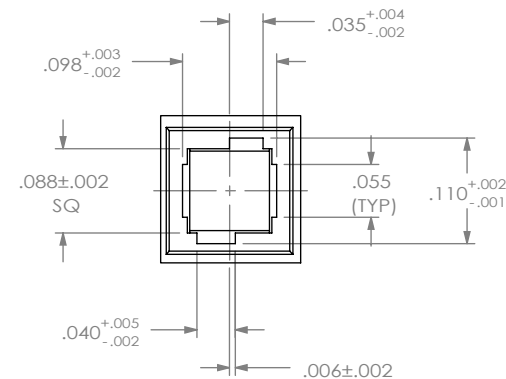
DETAIL 'C'
SCALE 5 : 1



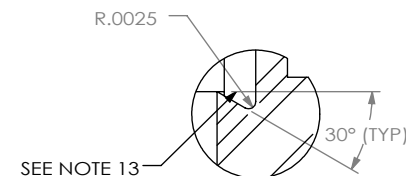
DETAIL 'D'
SCALE 5 : 1



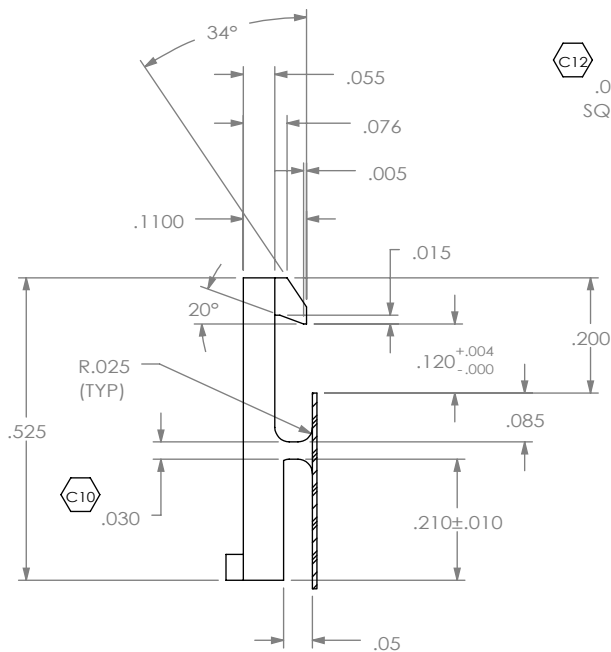
DETAIL 'F'
SCALE 5 : 1



DETAIL 'G'
SCALE 5 : 1

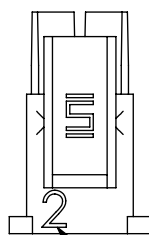


DETAIL 'H'
SCALE 15 : 1

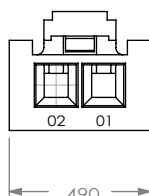


DETAIL 'E'
SCALE 3 : 1

FIG. 2
-02 POSITION
(SAME AS FIG. 1,
UNLESS OTHERWISE STATED)



SEE NOTE 8



PROPRIETARY NOTE

THIS DOCUMENT CONTAINS INFORMATION
CONFIDENTIAL AND PROPRIETARY TO
SAMTEC, INC. AND SHALL NOT BE REPRODUCED
OR TRANSFERRED TO OTHER DOCUMENTS OR
DISCLOSED TO OTHERS OR USED FOR ANY
PURPOSE OTHER THAN THAT WHICH IT WAS
OBTAINED WITHOUT THE EXPRESSED WRITTEN
CONSENT OF SAMTEC, INC.

DO NOT SCALE DRAWING

SHEET SCALE: 1:0.666667

samtec

520 PARK EAST BLVD, NEW ALBANY, IN 47150
PHONE: 812-944-6733 FAX: 812-948-5047
e-Mail: info@SAMTEC.com code: 55322

DESCRIPTION:

.165 SHROUDED CONTACT BODY

DWG. NO.

IPBD-XX-S-X

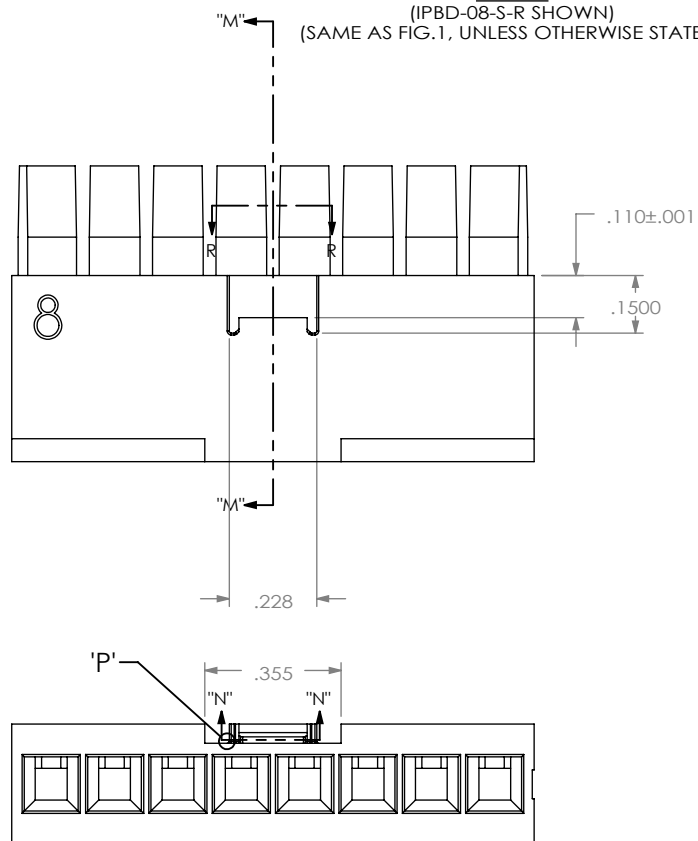
BY: DEAN P

4/14/2005

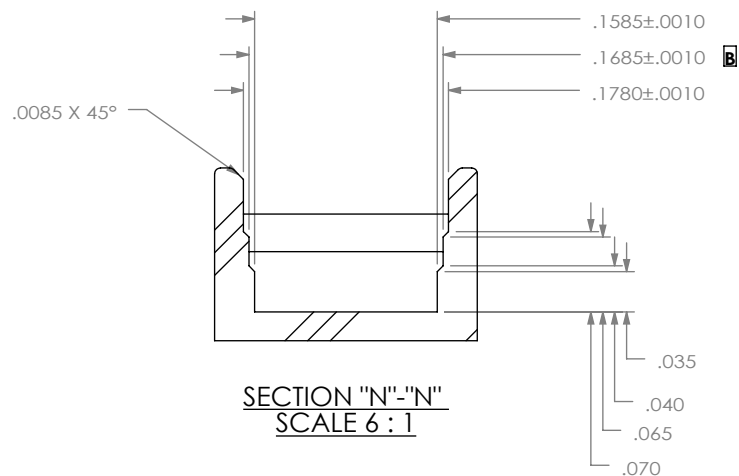
SHEET 2 OF 3

FIG. 3

(IPBD-08-S-R SHOWN)
(SAME AS FIG. 1, UNLESS OTHERWISE STATED)



SECTION "N"- "N"
SCALE 6 : 1



R.005 (TYP)

DETAIL 'P'
SCALE 16 : 1

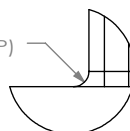
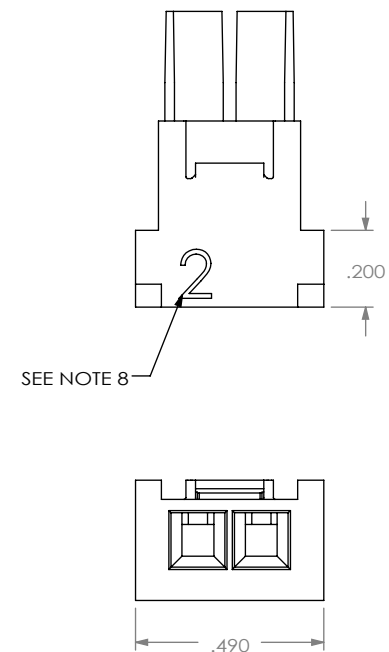
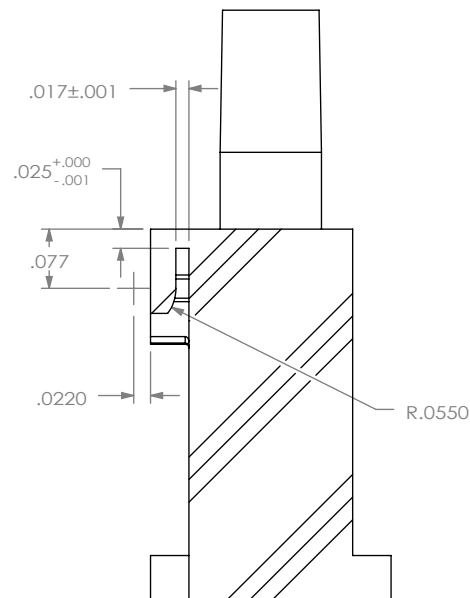


FIG. 4

(IPBD-02-S-R SHOWN)
(SAME AS FIG. 3, UNLESS OTHERWISE STATED)



SECTION "M"- "M"
SCALE 4 : 1



PROPRIETARY NOTE

THIS DOCUMENT CONTAINS INFORMATION
CONFIDENTIAL AND PROPRIETARY TO
SAMTEC, INC. AND SHALL NOT BE REPRODUCED
OR TRANSFERRED TO OTHER DOCUMENTS OR
DISCLOSED TO OTHERS OR USED FOR ANY
PURPOSE OTHER THAN THAT WHICH IT WAS
OBTAINED WITHOUT THE EXPRESSED WRITTEN
CONSENT OF SAMTEC, INC.

DO NOT SCALE DRAWING

SHEET SCALE: 2:1

samtec

520 PARK EAST BLVD, NEW ALBANY, IN 47150
PHONE: 812-944-6733 FAX: 812-948-5047
e-Mail: info@SAMTEC.com code: 55322

DESCRIPTION:
.165 SHROUDED CONTACT BODY

DWG. NO.
IPBD-XX-S-X

BY: DEAN P 4/14/2005 SHEET 3 OF 3