

North America: Danboro, PA • E-mail: info@pemnet.com • Tel: +1-215-766-8853

Europe: Galway, Ireland • E-mail: europe@pemnet.com • Tel: +353-91-751714

Asia/Pacific: Singapore • E-mail: singapore@pemnet.com • Tel: +65-6-745-0660
Shanghai, China • E-mail: china@pemnet.com • Tel: +86-21-5868-3688

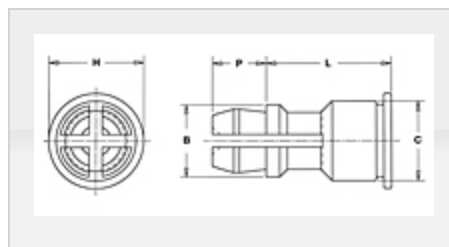
Part # SSC-4mm-8, SNAP-TOP® Standoffs - Types SSA, SSC, SSS - Metric

PEM SNAP-TOP® Standoffs (Types SSA, SSS, SSC) are designed for permanent installation into metal panels or PC boards.

These all-metal standoffs use a spring action to hold PC boards and subassemblies securely, while allowing for quick removal. Screws and other threaded hardware are eliminated. This means less parts to handle during assembly and less risk of damaging delicate circuitry because of loose parts falling into your equipment.

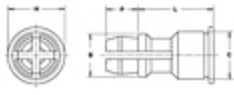
These standoffs are permanently installed in the panel by

[+ more](#)



Specifications

Panel 1 (Bottom) Thickness Min.	1.00 mm
Panel 1 (Bottom) Mounting Hole B + 0.08	5.41 mm
Panel 2 (Top) Thickness Range	1.00 to 1.80 mm
Panel 2 (Top) Mounting Hole A +0.08¹	4.00 mm

Panel 1 (Bottom) Hardness Max.²	HRB 70 / HB 125
Panel 2 (Top) Hardness Max.	No limit
Panel 1 Material³	Metal
Panel 2 (Top) Material	PC Board or Metal
L - Length ± 0.13	8 mm 
B ± 0.13	4.78 mm
C Max.	5.39 mm
H ± 0.13	6.35 mm
P ± 0.13	3.58 mm
Panel 1 (Bottom) Edge Distance C1 Min.	6.60 mm
Panel 2 (Top) Edge Distance C2 Min.	2.54 mm
Standard Material	400 Series Stainless Steel
Standard Finish	Passivated and/or tested per ASTM A380
Anvil Hole Diameter	5.49 - 5.56
CAD Supplier	PennEngineering® (PEM®)

¹ Available for thicker boards on special order.

² HRB - Hardness Rockwell "B" Scale. HB - Hardness Brinell.

³ Type SSA standoffs can be installed into cold-rolled steel provided hardness is less than HRB 50.
HRB - Hardness Rockwell "B" Scale. HB - Hardness Brinell.