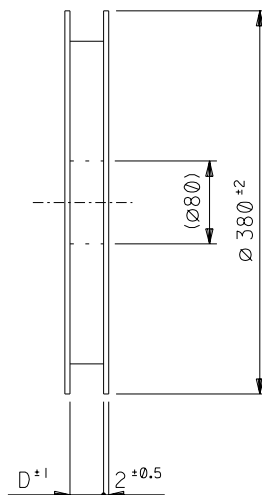


5. 材料(MATERIAL)  
 キャリアテープ(CARRIER TAPE): ポリプロピレン(POLYPROPYLENE)  
 トップテープ(TOPTAPE): PET, PE, PEF  
 リール(REEL): ポリスチレン(PS) <リサイクル材を含む>  
 POLYSTYRENE(PS) <RECYCLE MATERIAL CONTAINED>



EC NO. DRWN: CHK: APPR:			EC NO. DRWN: CHK: APPR:			EC NO. DRWN: CHK: APPR:			REVISED EC NO. J2003-1795 DRWN: R.SUMIYA '03/01/07 CHK: K.KASAHARA '03/01/07 APPR: T.YAMAGUCHI '03/01/07			REVISED EC NO. J2002-2829 DRWN: T.HANYU '02/05/15 CHK: M.SASAO '02/05/15 APPR: M.SASAO '02/05/15			DESCRIPTION			MATERIAL 材料 注記参照 SEE NOTES			GENERAL TOLERANCES: (UNLESS SPECIFIED) 一般公差			SCALE —#— DESIGN UNITS <input checked="" type="checkbox"/> mm <input type="checkbox"/> INCH		THIRD ANGLE PROJECTION <input type="checkbox"/> mm <input type="checkbox"/> INCH <input checked="" type="checkbox"/> mm ONLY		REVISE ON CAD ONLY				
															FINISH 仕上げ			10 UNDER 未満			±0.2		DRAWN BY & DATE M.FUJIKURA '00/12/06		TITLE: 0.5 FPC Conn ZIF Hsg Assy SMT RA Bottom Contact Embstp Pkg							
																		10 OVER 以上		30 UNDER 未満		±0.25		CHECKED BY & DATE S.KUNISHI '01/07/26								
																					30 OVER 以上		±0.3		APPROVED BY & DATE T.YAMAGUCHI '01/07/26		MOLEX INCORPORATED					
															WIRE RANGE 適用電線範囲						ANGLE 角度		±3°		CAD FILENAME 54548006.S01		MATERIAL NO. SEE CHART		DRAWING NO. SD-54548-006		SHEET NO. 1 OF 4	
									L			K			REV			INS. RANGE 被覆外径						THIS DRAWING CONTAINS INFORMATION THAT IS PROPRIETARY TO MOLEX INCORPORATED AND SHOULD NOT BE USED WITHOUT WRITTEN PERMISSION.						SIZE B		

DWG. NO.  
SD-54548-006

F

D

V

C

B

DO NOT SCALE DRAWING

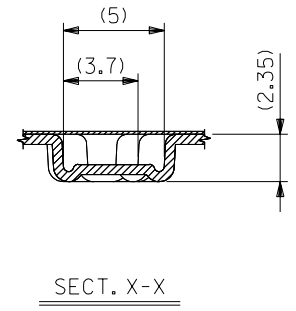
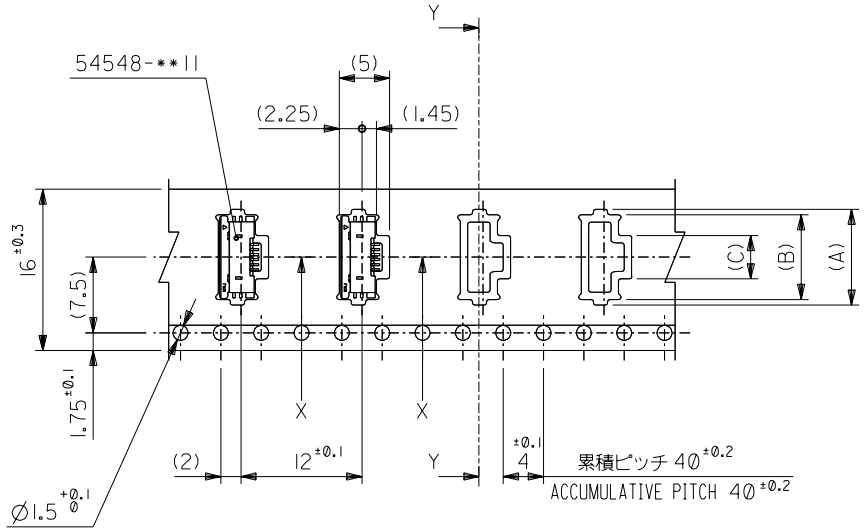
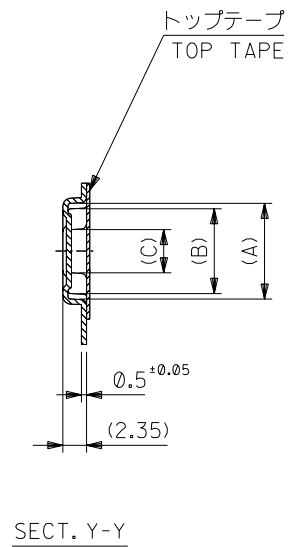
EC NO. DRWN: CHK: APPR:	EC NO. DRWN: CHK: APPR:	EC NO. DRWN: CHK: APPR:	EC NO. DRWN: CHK: APPR:	EC NO. DRWN: CHK: APPR:	EC NO. DRWN: CHK: APPR:
			L	K	

DESCRIPTION	MATERIAL 材料
FINISH 仕上げ	SHEET 1 OF 4 参照 REFER TO SHEET 1 OF 4
WIRE RANGE 適用電線範囲	
INS. RANGE 被覆外径	

GENERAL TOLERANCES: (UNLESS SPECIFIED) 一般公差	SCALE —#	DESIGN UNITS mm INCH
10 UNDER 未満	±0.2	DRAWN BY & DATE M.FUJIKURA '00/12/06
10 OVER 30 UNDER 以上 未満	±0.25	CHECKED BY & DATE S.KUNISHI '01/07/26
30 OVER 以上	±0.3	APPROVED BY & DATE T.YAMAGUCHI '01/07/26
ANGLE 角度	±3°	CAD FILENAME 54548006.S16

54548-**90	MODEL No.	DIMENSIONS: <input type="checkbox"/> mm <input type="checkbox"/> INCH <input checked="" type="checkbox"/> mm ONLY	SHT	REV
キャリアテープ幅 CARRIER TAPE WIDTH	D	THIRD ANGLE PROJECTION		
TITLE: 0.5 FPC Conn ZIF Hsg Assy SMT RA Bottom Contact Embstp Pkg				
MOLEX INCORPORATED				
MATERIAL NO. SEE CHART		DRAWING NO. SD-54548-006	SHEET NO. 2 OF 4	
THIS DRAWING CONTAINS INFORMATION THAT IS PROPRIETARY TO MOLEX INCORPORATED AND SHOULD NOT BE USED WITHOUT WRITTEN PERMISSION.				
SIZE B				

引き出し方向  
PULL OUT DIRECTION



16mm幅キャリアテープ  
16mm WIDTH CARRIER TAPE

16	17.5	4.3	8.4	9.5	54548-0690	6
		3.8	7.9	9	54548-0590	5
キャリアテープ幅 CARRIER TAPE WIDTH		D	(C)	(B)	(A)	製品番号 MATERIAL No.
						極数 Ckt

DWG. NO.  
SD-54548-006

F

D

V

C

B

DO NOT SCALE DRAWING

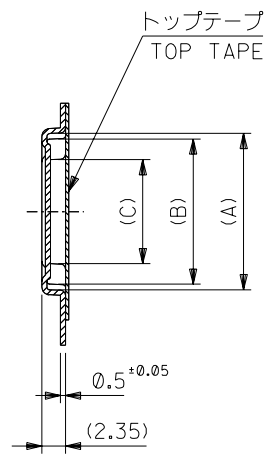
EC NO. DRWN: CHK: APPR:	EC NO. DRWN: CHK: APPR:	EC NO. DRWN: CHK: APPR:	EC NO. DRWN: CHK: APPR:	EC NO. DRWN: CHK: APPR:	EC NO. DRWN: CHK: APPR:
			L	K	

DESCRIPTION	MATERIAL 材料
FINISH 仕上げ	SHEET 1 OF 4 参照 REFER TO SHEET 1 OF 4
WIRE RANGE 適用電線範囲	
INS. RANGE 被覆外径	

GENERAL TOLERANCES: (UNLESS SPECIFIED) 一般公差	SCALE —#	DESIGN UNITS <input checked="" type="checkbox"/> mm <input type="checkbox"/> INCH
10 UNDER 未満	±0.2	DRAWN BY & DATE M.FUJIKURA '99/3/24
10 OVER 30 UNDER 以上 未満	±0.25	CHECKED BY & DATE S.KUNISHI '01/07/26
30 OVER 以上	±0.3	APPROVED BY & DATE T.YAMAGUCHI '01/07/26
ANGLE 角度	±3°	CAD FILENAME 54548006.S24

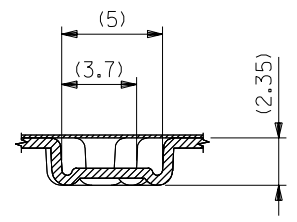
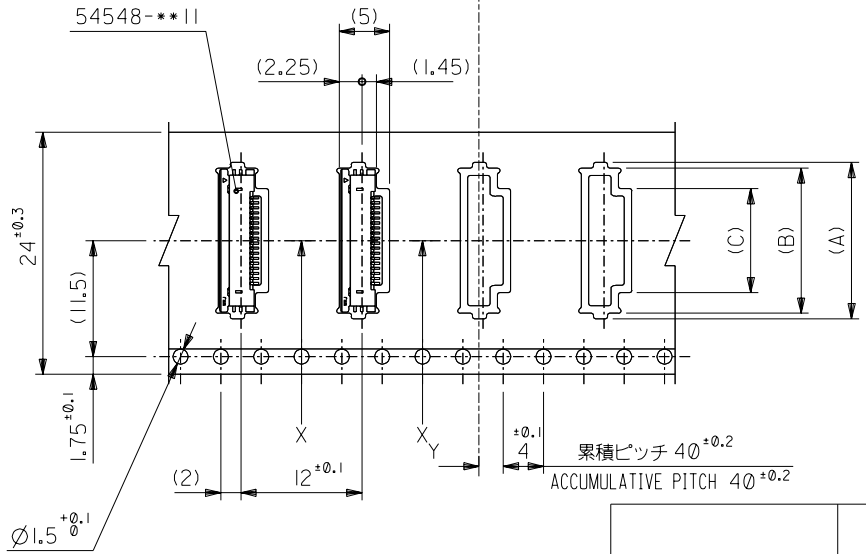
54548-**90	MODEL No.	DIMENSIONS: <input type="checkbox"/> mm <input type="checkbox"/> INCH <input checked="" type="checkbox"/> mm ONLY	SHT REV
	THIRD ANGLE PROJECTION	TITLE: 0.5 FPC Conn ZIF Hsg Assy SMT RA Bottom Contact Embstp Pkg	REVISE ON CAD ONLY
MOLEX INCORPORATED			
MATERIAL NO. SEE CHART	DRAWING NO. SD-54548-006	SHEET NO. 3 OF 4	
THIS DRAWING CONTAINS INFORMATION THAT IS PROPRIETARY TO MOLEX INCORPORATED AND SHOULD NOT BE USED WITHOUT WRITTEN PERMISSION.			SIZE B

引き出し方向  
PULL OUT DIRECTION



SECT. Y-Y

24mm幅キャリアテープ  
24mm WIDTH CARRIER TAPE



SECT. X-X

24	25.5	12.3	16.4	17.5	54548-2290	22
		11.8	15.9	17	54548-2190	21
		11.3	15.4	16.5	54548-2090	20
		10.3	14.4	15.5	54548-1890	18
		9.8	13.9	15	54548-1790	17
		9.3	13.4	14.5	54548-1690	16
		8.8	12.9	14	54548-1590	15
		8.3	12.4	13.5	54548-1490	14
		7.8	11.9	13	54548-1390	13
		7.3	11.4	12.5	54548-1290	12
		6.8	10.9	12	54548-1190	11
		6.3	10.4	11.5	54548-1090	10
		5.8	9.9	11	54548-0990	9
		5.3	9.4	10.5	54548-0890	8
4.8	8.9	10	54548-0790	7		
キャリアテープ幅 CARRIER TAPE WIDTH	D	(C)	(B)	(A)	製品番号 MATERIAL No.	極数 Ckt

DWG. NO.  
SD-54548-006

F

D

V

C


B

DO NOT SCALE DRAWING

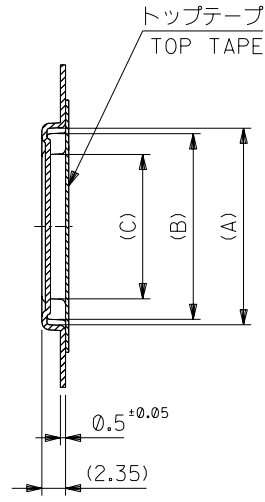
EC NO. DRWN: CHK: APPR:	EC NO. DRWN: CHK: APPR:	EC NO. DRWN: CHK: APPR:	EC NO. DRWN: CHK: APPR:	SEE SHEET 1 OF 4
EC NO. DRWN: CHK: APPR:	EC NO. DRWN: CHK: APPR:	EC NO. DRWN: CHK: APPR:	EC NO. DRWN: CHK: APPR:	EC NO. DRWN: CHK: APPR:
			L	K
				REV

DESCRIPTION	MATERIAL 材料
FINISH 仕上げ	SHEET 1 OF 4 参照 REFER TO SHEET 1 OF 4
WIRE RANGE 適用電線範囲	—//—
INS. RANGE 被覆外径	—//—

GENERAL TOLERANCES: (UNLESS SPECIFIED) 一般公差	SCALE —#—	DESIGN UNITS <input checked="" type="checkbox"/> mm <input type="checkbox"/> INCH
10 UNDER 未満	±0.2	DRAWN BY & DATE N.YANO '99/10/25
10 OVER 30 UNDER 以上 未満	±0.25	CHECKED BY & DATE S.KUNISHI '01/07/26
30 OVER 以上	±0.3	APPROVED BY & DATE T.YAMAGUCHI '01/07/26
ANGLE 角度	±3°	CAD FILENAME 54548006.S32

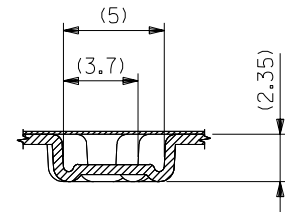
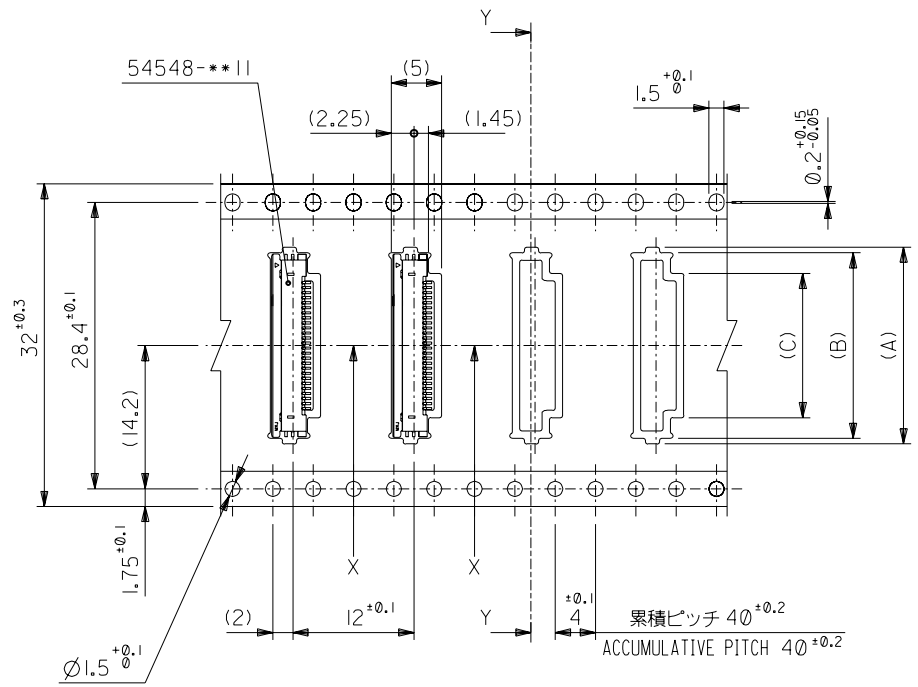
SCALE #	DESIGN UNITS <input checked="" type="checkbox"/> mm <input type="checkbox"/> INCH	 THIRD ANGLE PROJECTION	<input type="checkbox"/> mm INCH	<input type="checkbox"/> INCH mm	<input checked="" type="checkbox"/> mm ONLY	REVISE ON CAD ONLY
DRAWN BY & DATE N.YANO '99/10/25		TITLE: 0.5 FPC Conn ZIF Hsg Assy SMT RA Bottom Contact Embstp Pkg				
CHECKED BY & DATE S.KUNISHI '01/07/26						
APPROVED BY & DATE T.YAMAGUCHI '01/07/26		MOLEX INCORPORATED				
CAD FILENAME 54548006.S32		MATERIAL NO. SEE CHART	DRAWING NO. SD-54548-006			SHEET NO. 4 OF 4
THIS DRAWING CONTAINS INFORMATION THAT IS PROPRIETARY TO MOLEX INCORPORATED AND SHOULD NOT BE USED WITHOUT WRITTEN PERMISSION.						SIZE B

SECT. Y-Y



32mm幅キャリアテープ  
32mm WIDTH CARRIER TAPE

引き出し方向  
PULL OUT DIRECTION



SECT. X-X

# Mouser Electronics

Authorized Distributor

Click to View Pricing, Inventory, Delivery & Lifecycle Information:

Molex:

[54548-0590 BULK](#)