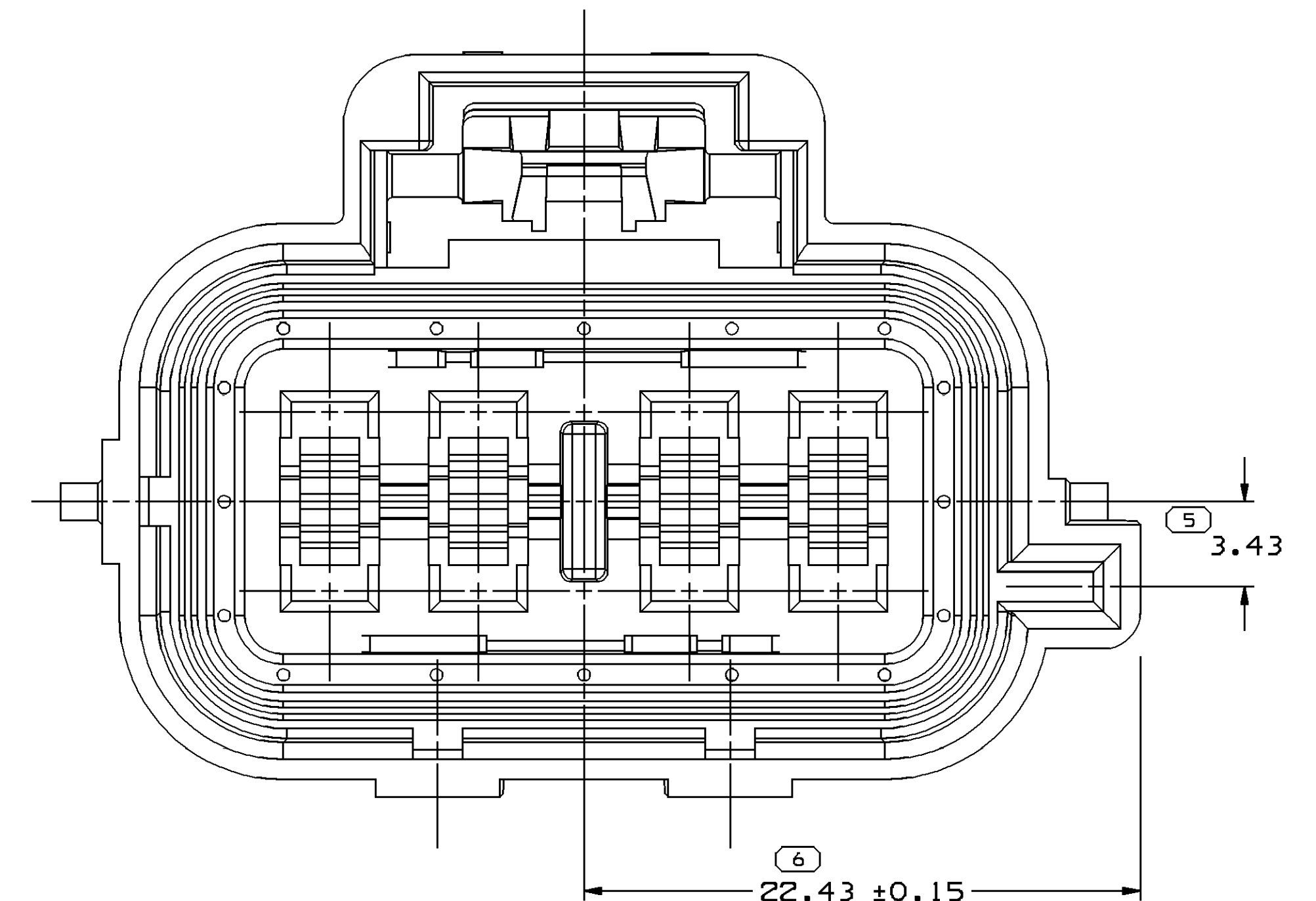
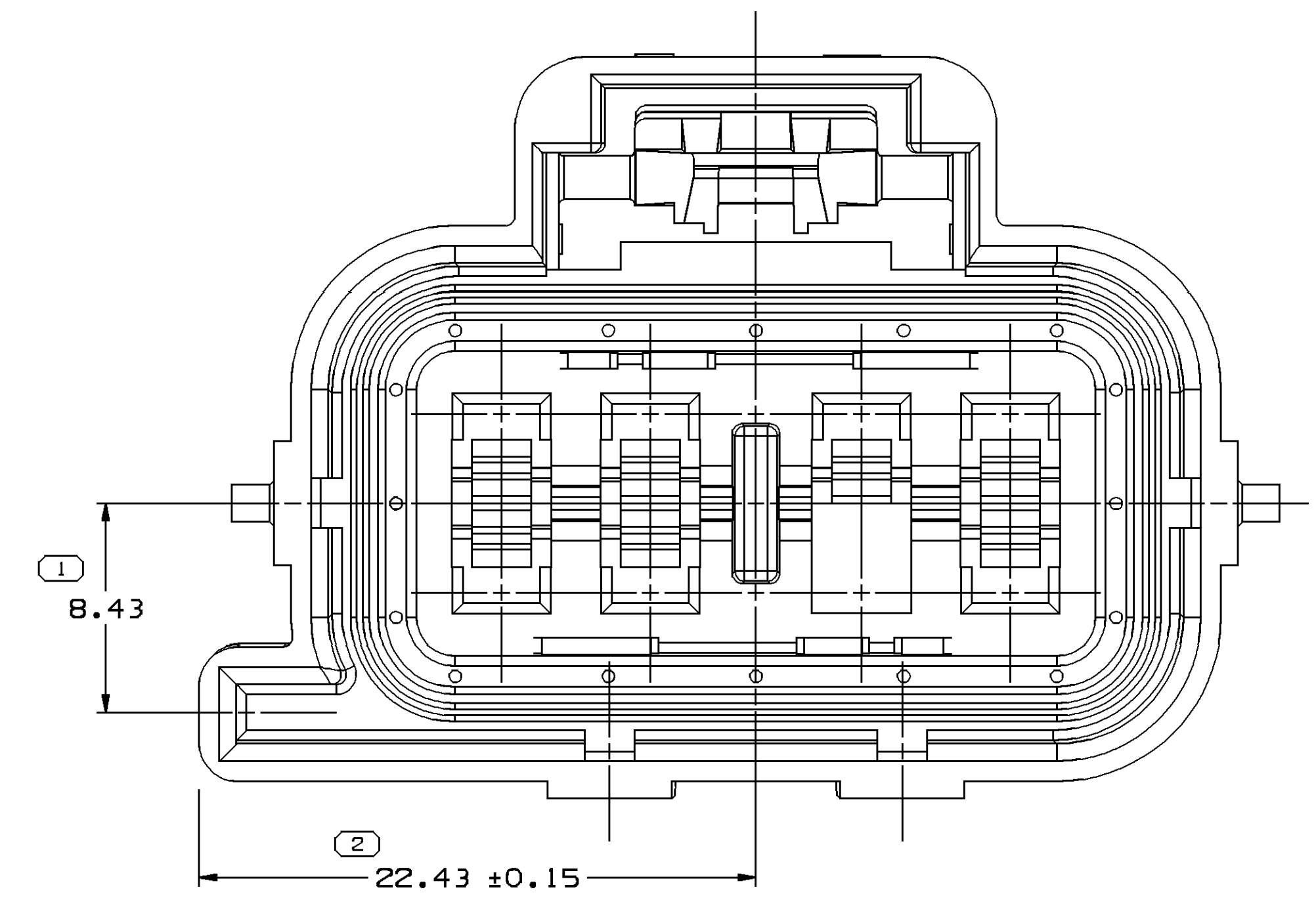
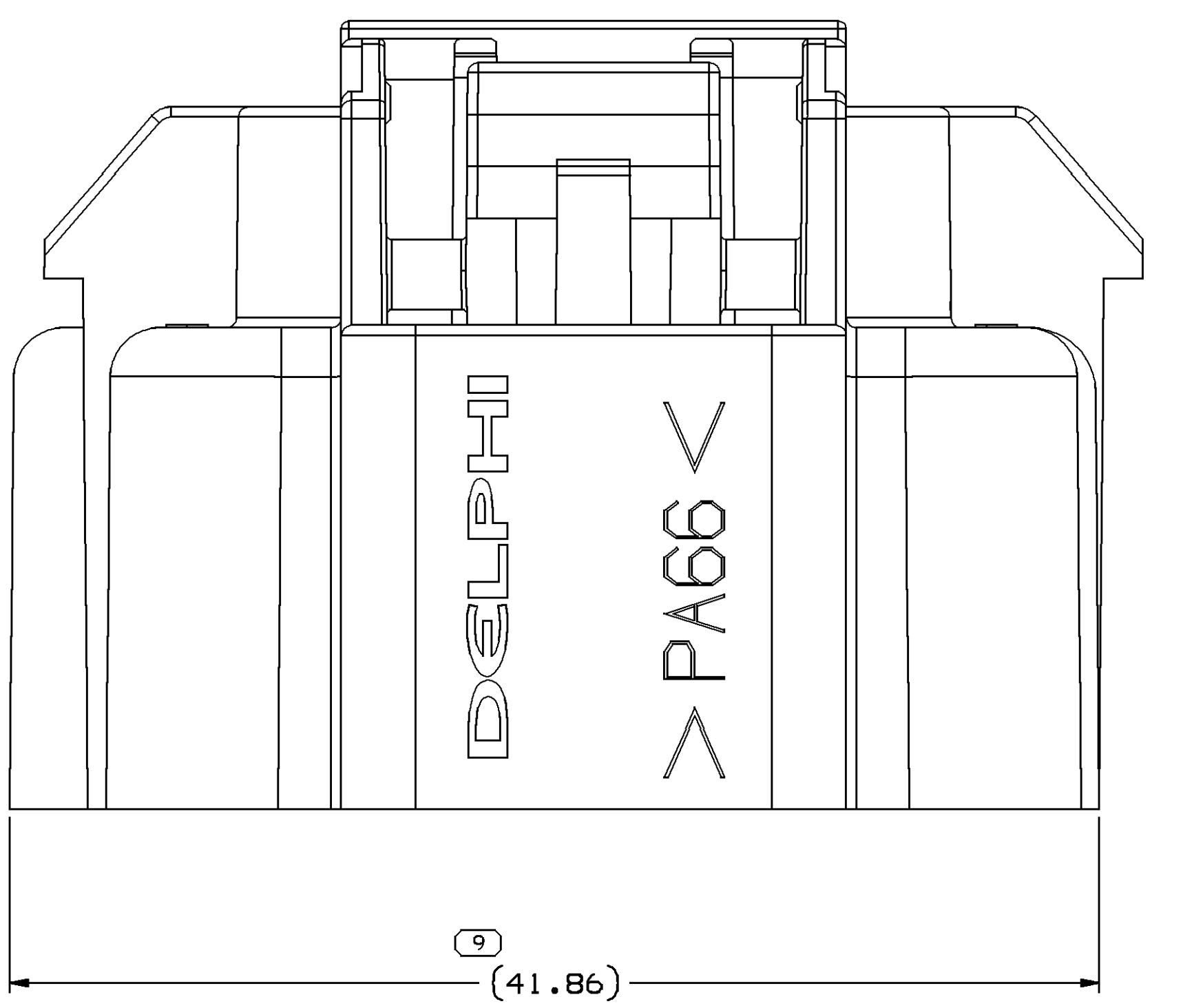


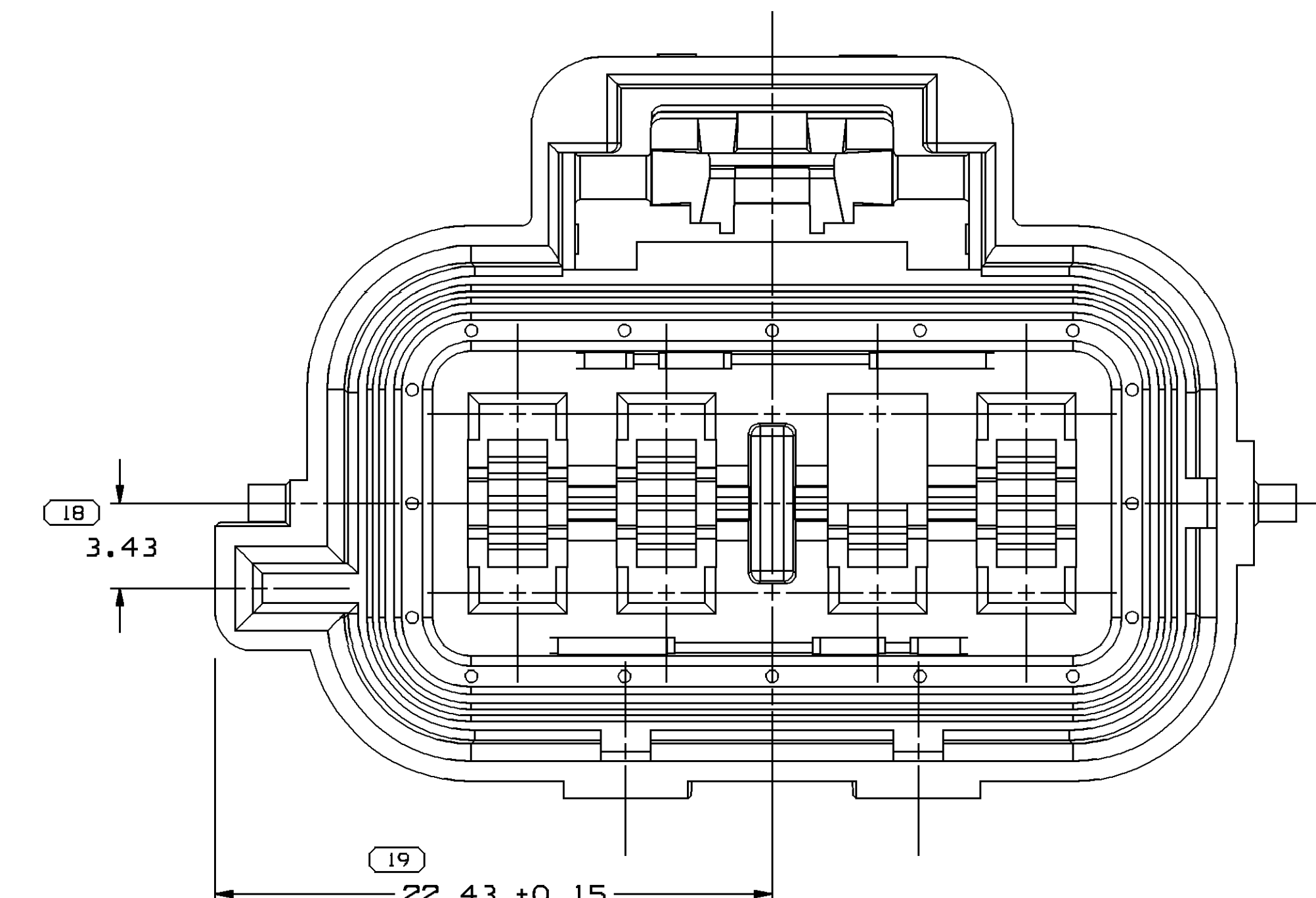
TYPE 102
SAME AS TYPE 101
EXCEPT AS SHOWN



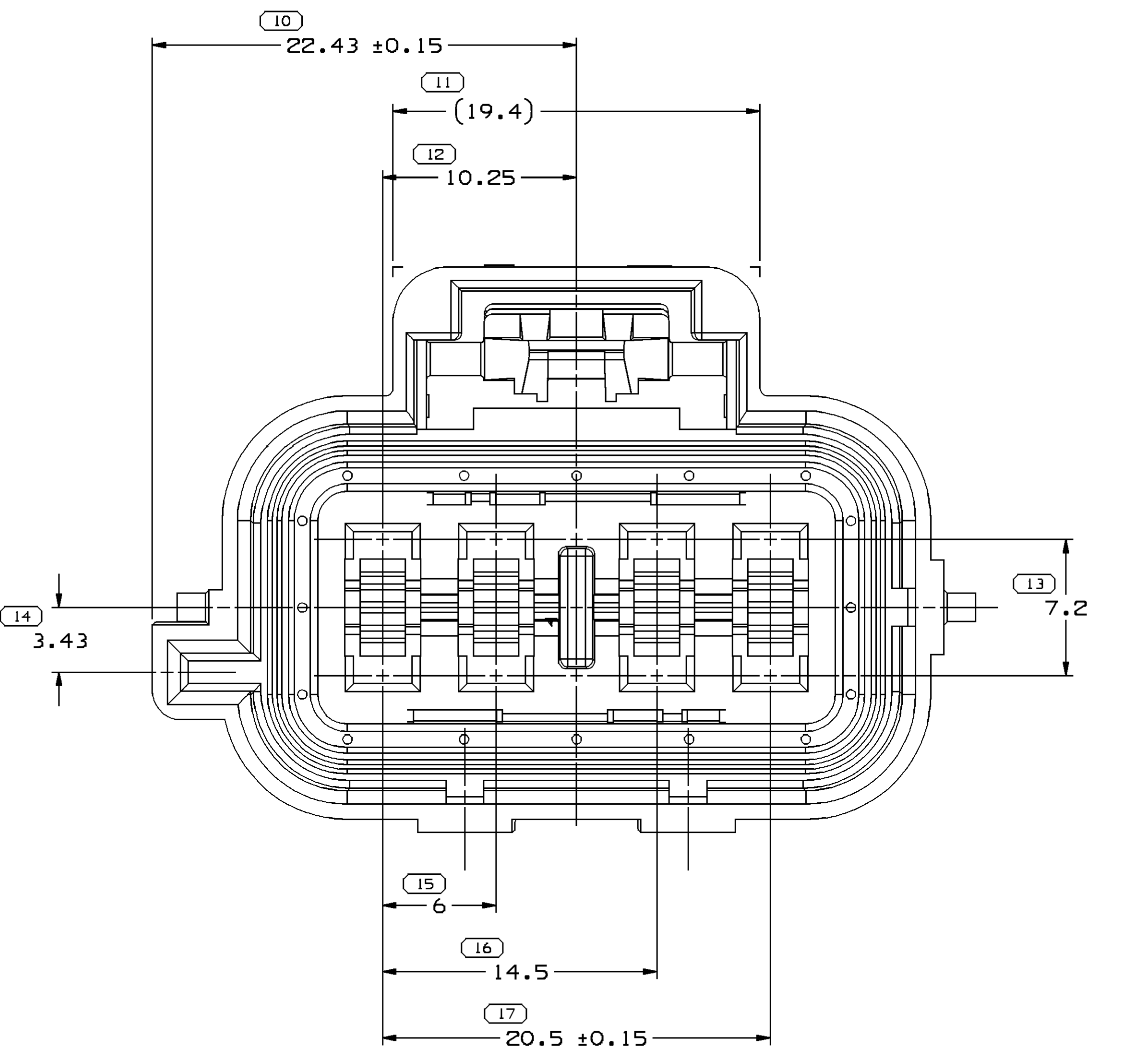
TYPE 105
SAME AS TYPE 101
EXCEPT AS SHOWN



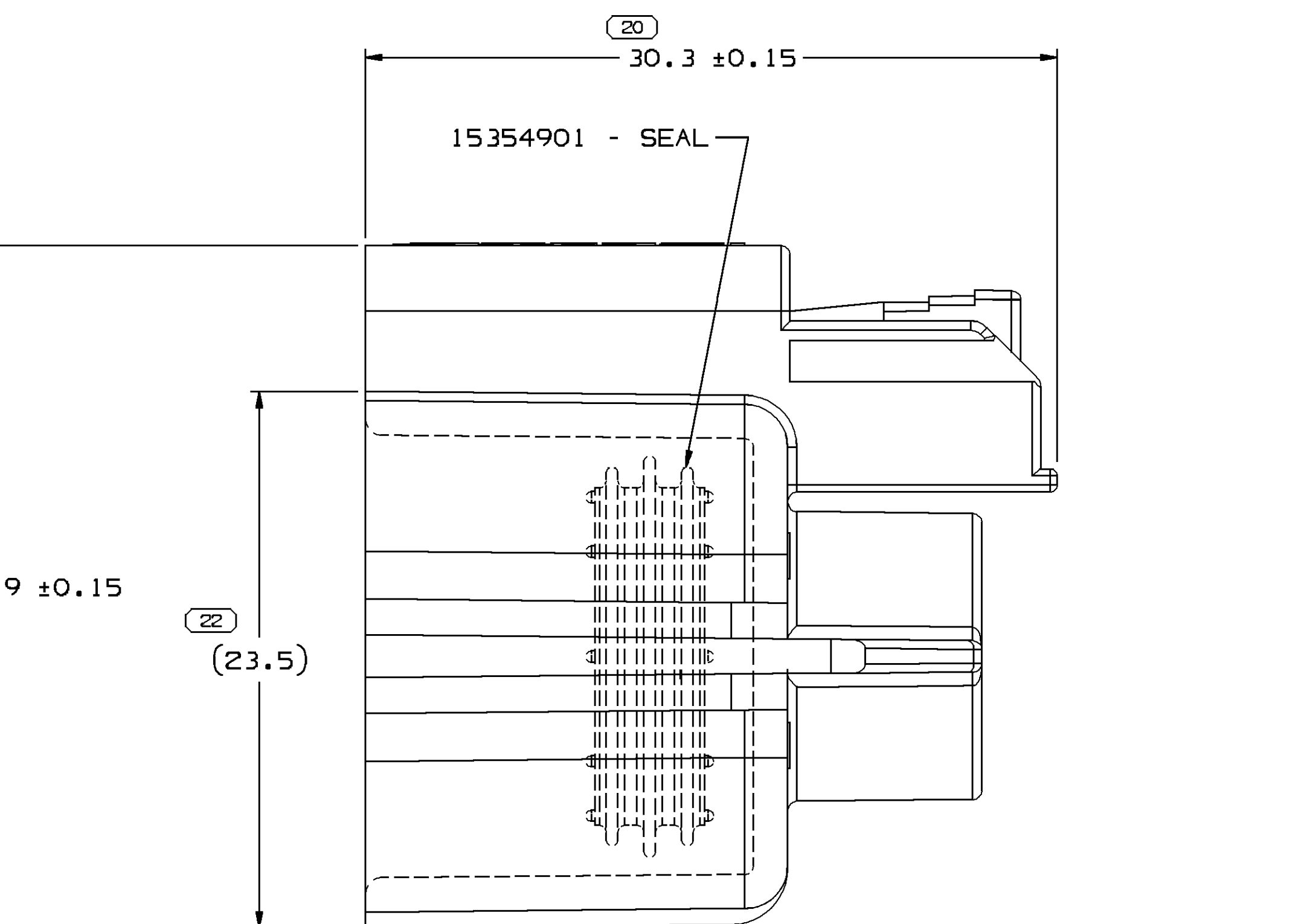
TYPE 103
SAME AS TYPE 101
EXCEPT AS SHOWN



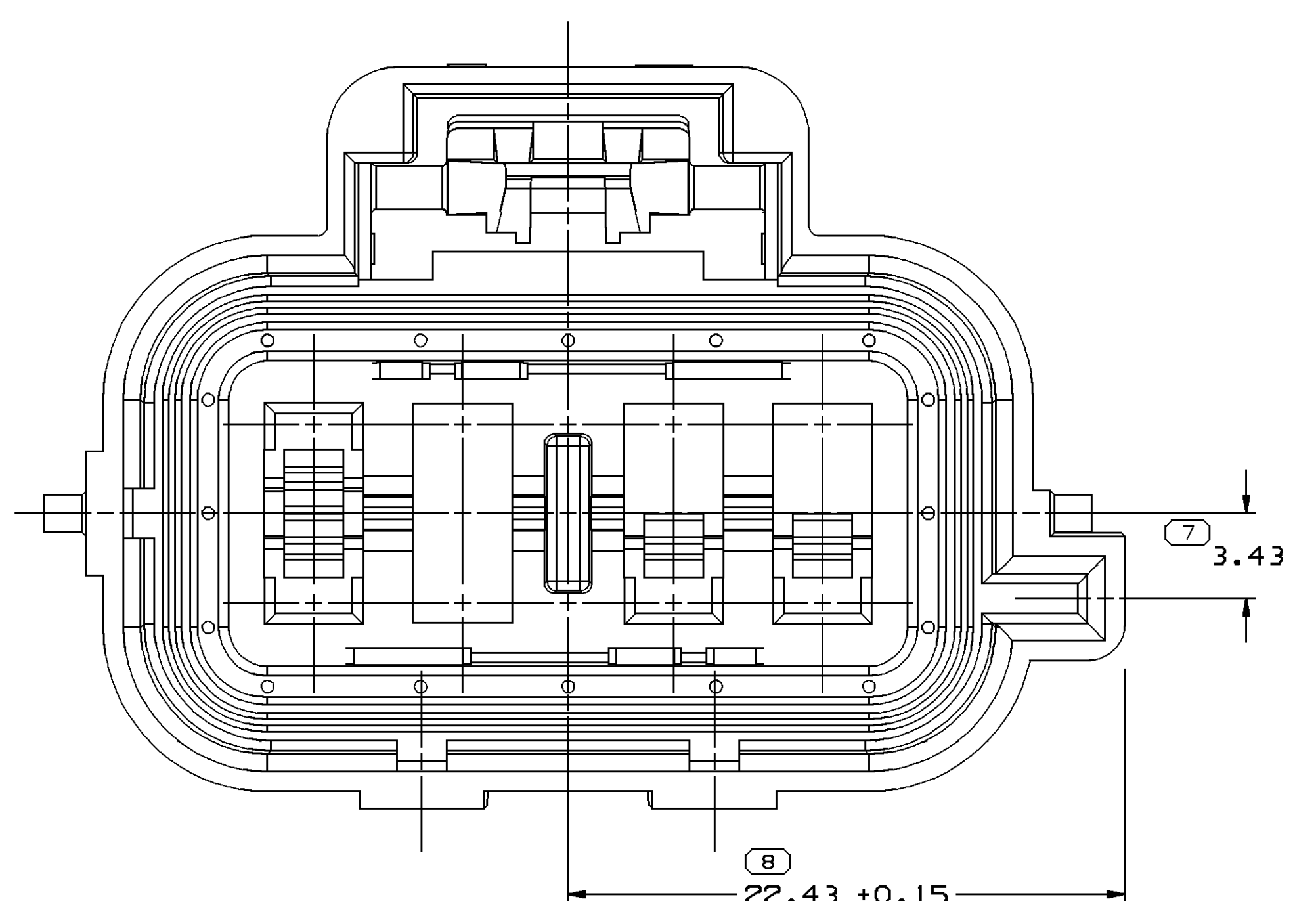
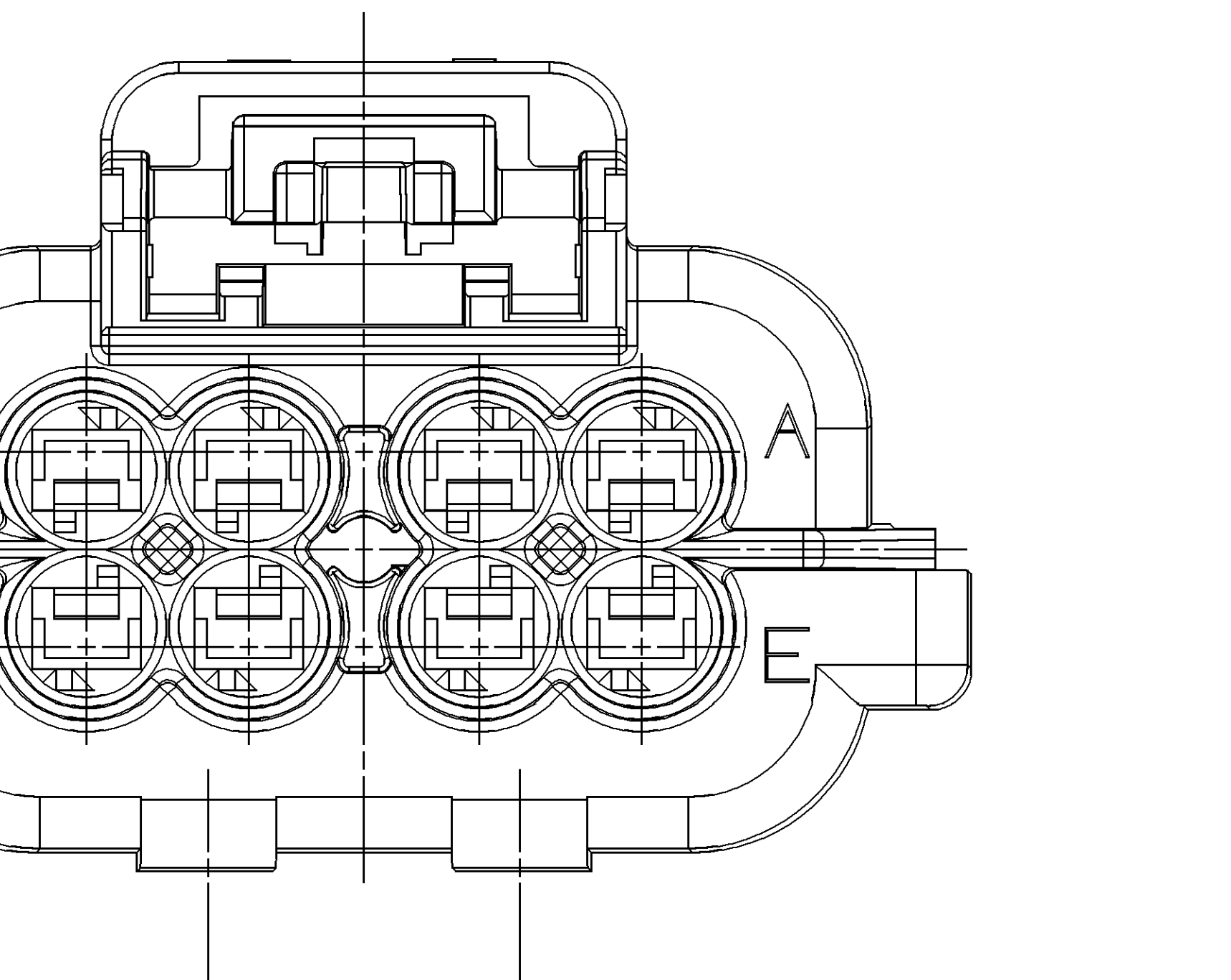
TYPE 106
SAME AS TYPE 101
EXCEPT AS SHOWN



TYPE 101



15354901 - SEAL



TYPE 104
SAME AS TYPE 101
EXCEPT AS SHOWN

DRAWING NUMBER
15317311
SIZE: A1x3 SCALE: 5:1 FRAME NO: 2 SHEET NO: 1 OF 1 REV: 04

15317309	B3	-	-	-	106	PURPLE	C	15317300	15304995
15317308	B3	-	-	-	105	BROWN		15305599	15304995
15317307	O3	-	-	-	104	CREAM	B,C,D,F	15305598	15304995
15317306	B3	-	-	-	103	BLACK	G	15305597	15304995
15317305	B3	-	-	-	102	MED GRAY	G	15305596	15304995
15317304	B3	-	-	-	101	BLUE		15305595	15304995
PART NO	REV	N/P	STATUS	TYPE	COLOR	BLOCKED CAVITIES	CONNECTOR	MATING COMPONENT	

- NOTES
- UNLESS OTHERWISE SPECIFIED AND/OR INDICATED:
DIMENSIONS ARE TO FACE OF VIEW SHOWN AND AUTOMATICALLY ROUNDED BY COMPUTER FOR INSPECTION (SEE MATH MODEL FOR PRECISE DIMENSIONS). FOR ALL OTHER DIMENSIONS NOT SHOWN BUT REQUIRED FOR TOOL BUILD, SEE MATH MODEL FOR PRECISE TOOL PATH DATA.
 - THIS PART ACCEPTS THE FOLLOWING COMPONENTS OR EQUIVALENT:
CAVITIES TO ACCEPT 15304715, 15304716 & 15304717 TERMINAL OR EQUIVALENT.
 - REFERENCE MATING COMPONENTS OR EQUIVALENT:
BUSS CONNECTOR - 15304995
TERMINAL POSITION ASSURANCE (TPA) - 15317301
 - SEALING CODE - TBD

DELPHI
DELPHI PACK/RO ELECTRICAL/ELECTRONIC ARCHITECTURE
MORRIS, OH

DATE: 07/06/97
BY: C. RAMIREZ
CHECKED: J. VAZQUEZ
APPROVED: G. ORANTES

15317311
SCALE: 5:1
FRAME NO: 2
SHEET NO: 1 OF 1
REV: 04

Mouser Electronics

Authorized Distributor

Click to View Pricing, Inventory, Delivery & Lifecycle Information:

[Delphi Connection Systems:](#)

[15317308-B](#)