



EVERLIGHT ELECTRONICS CO.,LTD.

Device Number : CDLE-033-462 REV: 2

5.0mm Multi-Color Round Type LED Lamps

PART NO : 336IID ECN : Page: 1/4

■ Features :

- Two chips are matched for uniform light output, wide viewing angle
- Long life-solid state reliability
- IC compatible/Low power consumption

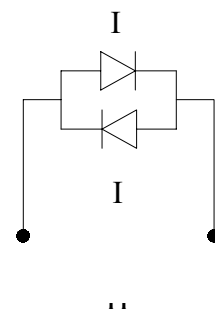
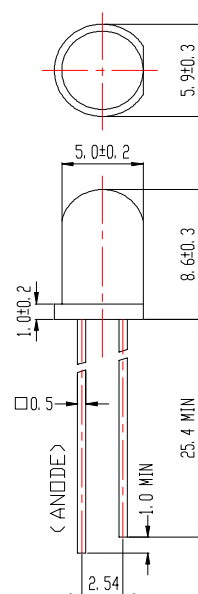
■ Descriptions :

- The 336 LED lamp contain two integral chips and are available as both bicolor and bipolar types.
- The Hi-eff Red Light is emitted by diodes of GaAsP/GaP respectively.
- Type of bipolar lamps are both White Diffused and Color Diffused while the bicolor are Color Diffused.

■ Applications :

- TV set
- Monitor
- Telephone
- Computer

■ Package Dimensions:



■ Notes :

- 1.All dimensions are in millimeters.
- 2.An epoxy meniscus may extend about 1.5mm(0.059") down to the lead.

PART NO	Chip		Lens Color
	Material	Emitted Color	
336IID	GaAsP/GaP	Hi-Eff Red	Red Diffused
	GaAsP/GaP	Hi-Eff Red	

OFFICE : NO. 25,Lane 76,Sec.3, Chung Yang Rd., Tucheng 236, Taipei, Taiwan, R.O.C.

TEL : 886-2-2267-2000,2267-9936

FAX : 886-2-2267-6244,22676189,22676306

<http://www.everlight.com>

A0002040,YW02019



EVERLIGHT ELECTRONICS CO.,LTD.

Device Number : CDLE-033-462 REV: 2

5.0mm Multi-Color Round Type LED Lamps

PART NO : 336IID ECN : Page: 2/4

■ Absolute Maximum Ratings at Ta = 25°C

Parameter	Symbol	Rating	Unit
Forward Current	IF	I 30	mA
		I 30	
Operating Temperature	Topr	-40 to +85	°C
Storage Temperature	Tstg	-40 to +100	°C
Soldering Temperature	Tsol	260 ± 5	°C
Power Dissipation	Pd	I 100	mW
		I 100	
Peak Forward Current (Duty 1/10 @ 1KHZ)	IF(Peak)	I 160	mA
		I 160	
Reverse Voltage	VR	5	V

■ Electronic Optical Characteristics :

Parameter	Symbol	Min.	Typ.	Max.	Unit	Condition
Luminous Intensity	Iv I	0.63	2.0	/	mcd	IF= 10 mA
	I	0.63	2.0	/		
Viewing Angle	2 θ 1/2	/	54	/	deg	IF= 20 mA
Peak Wavelength	λ p I	/	635	/	nm	IF= 20 mA
	I	/	635	/		
Dominant Wavelength	λ d I	/	625	/	nm	IF= 20 mA
	I	/	625	/		
Spectrum Radiation Bandwidth	△ λ I	/	45	/	nm	IF= 20 mA
	I	/	45	/		
Forward Voltage	VF I	1.7	2.0	2.4	V	IF= 20 mA
		1.7	2.0	2.4		
Reverse Current	IR	/	/	10	μ A	VR= 5 V



EVERLIGHT ELECTRONICS CO.,LTD.

Device Number : CDLE-033-462

REV: 2

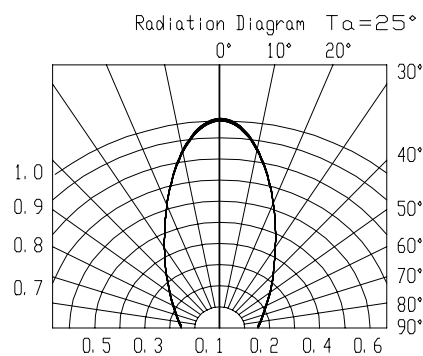
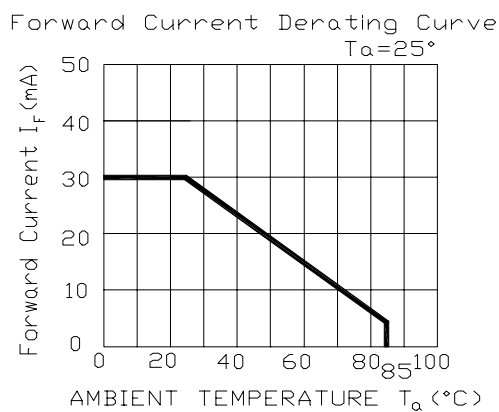
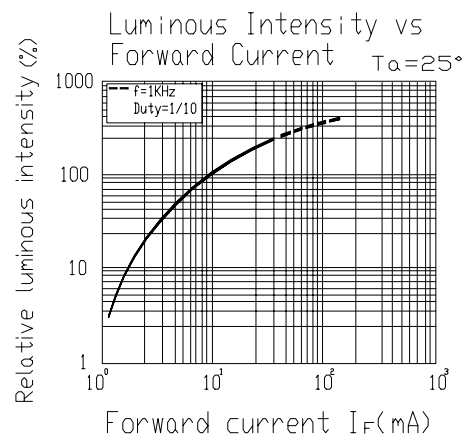
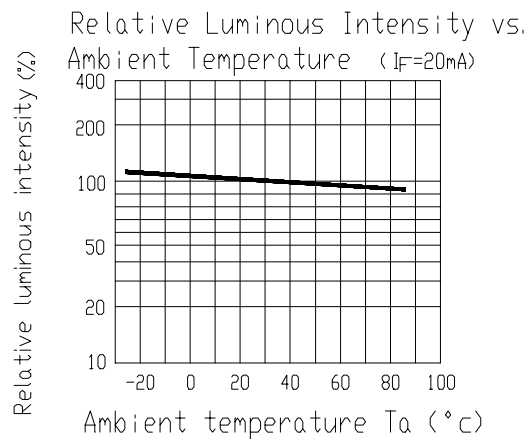
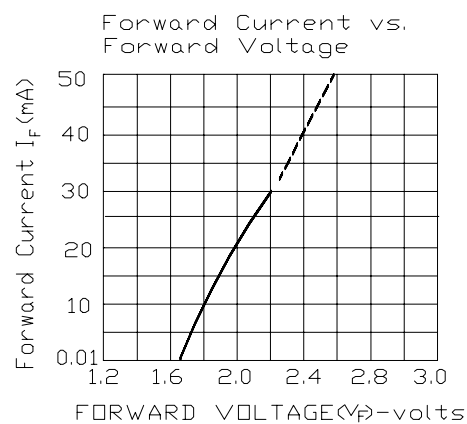
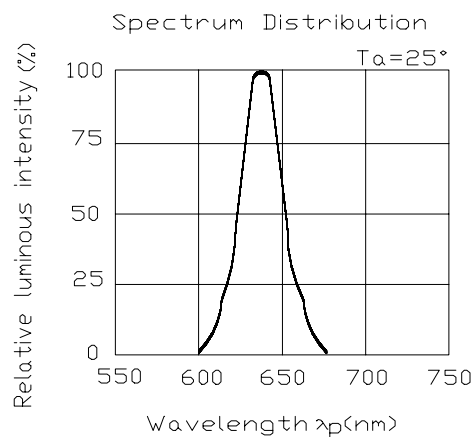
5.0mm Multi-Color Round Type LED Lamps

PART NO : 336IID

ECN :

Page: 3/4

■ Typical Electro-Optical Characteristic Curves:





EVERLIGHT ELECTRONICS CO.,LTD.

Device Number : CDLE-033-462 REV: 2

5.0mm Multi-Color Round Type LED Lamps

PART NO : 336IID ECN : Page: 4/4

■ Reliability test items and conditions:

NO	Item	Test Conditions	Test Hours/Cycle	Sample Size	Ac/Re
1	Solder Heat	TEMP : 260°C ± 5 °C	5 SEC	76 PCS	0/1
2	Temperature Cycle	H : +85°C 30min ┆ 5 min L : -55°C 30min	50 CYCLES	76 PCS	0/1
3	Thermal Shock	H : +100°C 5min ┆ 10 sec L : -10°C 5min	50 CYCLES	76 PCS	0/1
4	High Temperature Storage	TEMP : 100°C	1000 HRS	76 PCS	0/1
5	Low Temperature Storage	TEMP : -55°C	1000 HRS	76 PCS	0/1
6	DC Operating Life	IF = 20 mA	1000 HRS	76 PCS	0/1
7	High Temperature / High Humidity	85°C/85% RH	1000 HRS	76 PCS	0/1