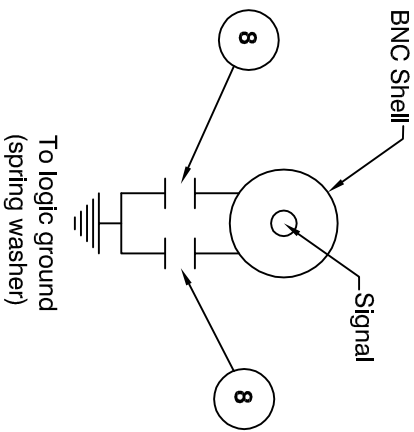
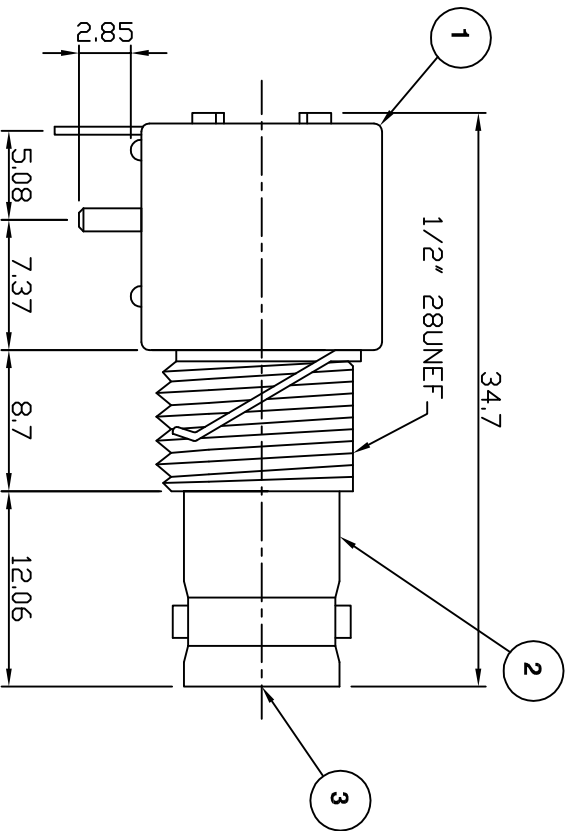
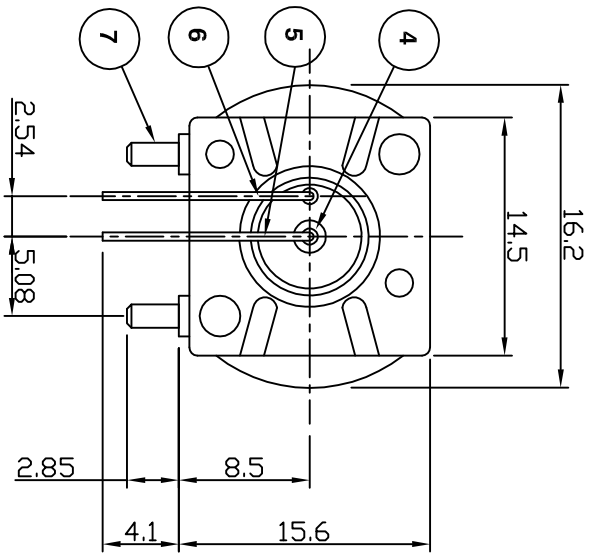
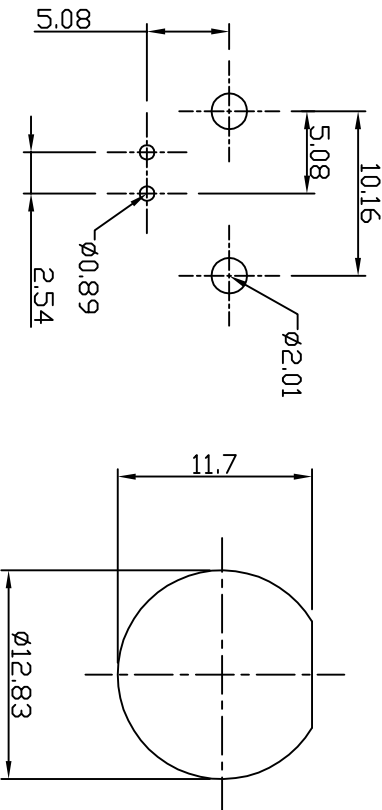


RoHS COMPLIANT



Capacitor Circuit Diagram



Recommended PCB Layout

Panel Cutout

Electrical Characteristics

Nominal Impedance: 50 ohms
Frequency Range: DC to 1 GHz
Operating Voltage (rms): 500 V maximum at sea level
Dielectric Withstand Voltage (rms): 1500 V maximum at sea level
Contact Resistance: 3.0 milliohms maximum
Insulation Resistance: 5000 megohms minimum

Mechanical Characteristics

Mating Cycles: 500 cycles minimum
Interface Dimensions: Conform to MIL-C-39012

Environmental Characteristics

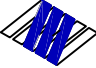
Temperature Range: -65 °C to +165 °C

PART	DESCRIPTION
1 Body	PBT + 30% Glass Fibre (UL 94V-0)
2 Body	Zinc Alloy, nickel plated
3 Dielectric	Polypropylene UL 94HB
4 Contact	Phosphor bronze, gold plated (Interface)
5 Signal Contact	Copper clad steel, tin/lead plated (PCBs)
6 Ground Contact	Copper, tin plated
7 Mounting Post	Brass, tin plated
8 Ceramic Chip Capacitor	4700 pF ±10%

First Issue	SN	1	04 Feb 02
DESCRIPTION OF REVISION	APPVD	ISS	DATE

TITLE:
BNC Right Angle PCB Mount
Jack Filter Connector

PART NUMBER:
VBF201



Connectivity Solutions
7-13 Russel Way,
Widford Industrial Estate,
Chelmsford, Essex,
CM1 3AA, UK.
Tel: +44 (0) 1245 359515
Fax: +44 (0) 1245 358938

Mouser Electronics

Authorized Distributor

Click to View Pricing, Inventory, Delivery & Lifecycle Information:

[Emerson Connectivity Solutions:](#)

[VBF201](#)