

HEYCO

Heyco®-Tite EMC Brass Liquid Tight Cordgrips

Straight-Thru, Metric Hubs

EMC Nickel-Plated Brass with Contact Sleeve

The Ultimate in Liquid Tight Strain Relief Protection



Cable Dia. Range				Part No.	Thread Size		Part Dimensions							
Minimum		Maximum					A Clearance Hole Dia.		B Max. O.A. Length		C Thread Length		D Wrenching Nut Flat Size	
in.	mm.	in.	mm.				in.	mm.	in.	mm.	in.	mm.	in.	mm.

Standard Thread

.098	2,5	.138	3,5	4613	M8 x 1,25	cULus	.315	8,0	.94	24,0	.39	10,0	.43	11,0
.118	3,0	.157	4,0	4614										
.118	3,0	.157	4,0	4615	M10 x 1,5	cULus	.394	10,0	.98	25,0	.39	10,0	.51	13,0
.157	4,0	.236	6,0	4616										
.177	4,5	.236	6,0	4618	M12 x 1,5	cULus	.472	12,0	1.06	27,0	.39	10,0	.59	15,0
.236	6,0	.295	7,5	4619										
.236	6,0	.312	8,0	4622	M16 x 1,5	cULus	.630	16,0	1.18	30,0	.39	10,0	.71	18,0
.315	8,0	.394	10,0	4623	M16 x 1,5	cULus	.630	16,0	1.26	32,0	.39	10,0	.71	18,0
.315	8,0	.433	11,0	4625	M20 x 1,5	cULus	.787	20,0	1.22	31,0	.39	10,0	.94	24,0
.433	11,0	.551	14,0	4626	M20 x 1,5	cULus	.787	20,0	1.30	33,0	.39	10,0	.94	24,0
.512	13,0	.630	16,0	4628	M25 x 1,5	cULus	.984	25,0	1.41	36,0	.43	11,0	1.18	30,0
.630	16,0	.748	19,0	4629	M25 x 1,5	cULus	.984	25,0	1.53	39,0	.43	11,0	1.18	30,0
.709	18,0	.827	21,0	4631	M32 x 1,5	cULus	1.260	32,0	1.65	42,0	.51	13,0	1.42	36,0
.827	21,0	.984	25,0	4632										

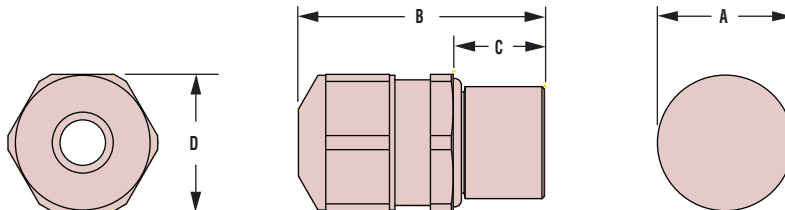
Short Thread — ALL NEW PRODUCTS!

.098	2,5	.138	3,5	14613	M8 x 1,25	cULus	.315	8,0	.75	19,0	.20	5,0	.43	11,0
.118	3,0	.157	4,0	14614										
.118	3,0	.157	4,0	14615	M10 x 1,5	cULus	.394	10,0	.79	20,0	.20	5,0	.51	13,0
.157	4,0	.236	6,0	14616										
.177	4,5	.236	6,0	14618	M12 x 1,5	cULus	.472	12,0	.87	22,0	.20	5,0	.59	15,0
.236	6,0	.295	7,5	14619										
.236	6,0	.312	8,0	14622	M16 x 1,5	cULus	.630	16,0	.98	25,0	.20	5,0	.71	18,0
.315	8,0	.394	10,0	14623	M16 x 1,5	cULus	.630	16,0	1.06	27,0	.20	5,0	.71	18,0
.315	8,0	.433	11,0	14625	M20 x 1,5	cULus	.787	20,0	1.06	27,0	.24	6,0	.94	24,0
.433	11,0	.551	14,0	14626	M20 x 1,5	cULus	.787	20,0	1.10	29,0	.24	6,0	.94	24,0
.512	13,0	.630	16,0	14628	M25 x 1,5	cULus	.984	25,0	1.26	32,0	.28	7,0	1.18	30,0
.630	16,0	.748	19,0	14629	M25 x 1,5	cULus	.984	25,0	1.38	35,0	.28	7,0	1.18	30,0
.709	18,0	.827	21,0	14631	M32 x 1,5	cULus	1.260	32,0	1.46	37,0	.31	8,0	1.42	36,0
.827	21,0	.984	25,0	14632										

Short Thread, High Temperature*

.236	6,0	.315	8,0	4609	M16 x 1,5	cULus	.630	16,0	.98	25,0	.20	5,0	.71	18,0
------	-----	------	-----	-------------	-----------	-------	------	------	-----	------	-----	-----	-----	------

*Special sealing gland rated to 200°C (392°F).



- Ideal for applications where **Electromagnetic Interference (EMI) protection or Electromagnetic Compatibility (EMC) is needed.**
- IP 68 rated.
- Nickel-plated finish over brass provides excellent corrosion resistance and durability.
- Excellent 360° shield contact with contact sleeve due to braided shield which runs into the gland.
- Combination of the sealing insert and the contact socket guarantees a constant contact quality with minimal transfer impedance.
- Inner cable protection.
- Long thread for use in standard or thick panels.
- Multiple sizes for flexible cord diameters ranging from .10" (2,5 mm) to 1.00" (25,5 mm).
- For use in clearance or threaded holes.
- Cordgrips are made of nickel plated brass and the gland is made of TPE.
- EMC locknuts available. See page 3-40.
- DFARS Compliant



Material	Nickel-Plated Brass W/TPE Sealing Gland
Certifications	cULus Recognized under the Component Program of Underwriters' Laboratories File E51579 to both Canadian and U.S. requirements
Temperature Range	-40°F (-40°C) to 212°F (100°C)
IP Rating	IP 68, IP 69K

Quick
Specs

Mouser Electronics

Authorized Distributor

Click to View Pricing, Inventory, Delivery & Lifecycle Information:

[Heyco:](#)

[4613](#) [4629](#) [4623](#) [4631](#) [4619](#) [4622](#) [4626](#) [4618](#) [4615](#) [4616](#) [4628](#) [4625](#) [4614](#) [4632](#) [14629](#) [14632](#) [14616](#)
[14618](#) [14628](#) [14622](#) [14623](#) [14614](#) [14619](#) [14615](#) [14626](#) [14613](#) [14625](#) [14631](#) [4609](#)